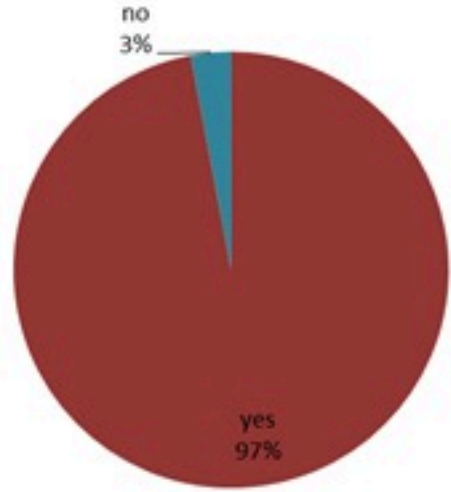


الخطوط الساخنة

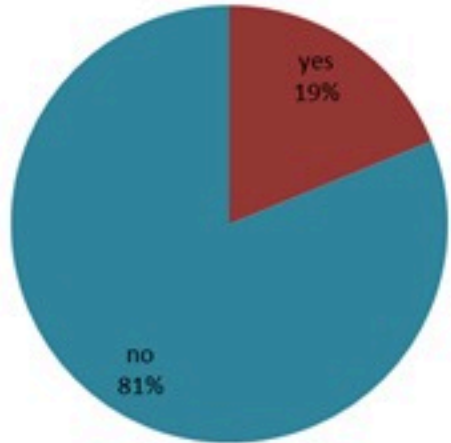
1760 (الصليب الأحمر)
1787 (وزارة الصحة)

ترصد الكوليرا في لبنان 08 تشرين الثاني 2022

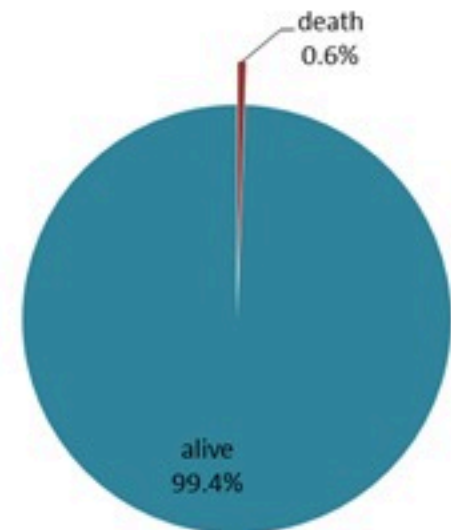
الجمهورية اللبنانية
وزارة الصحة العامة
برنامج الترصد الوبائي



حسب ظهور
العوارض
(المشبهة والمثبتة)



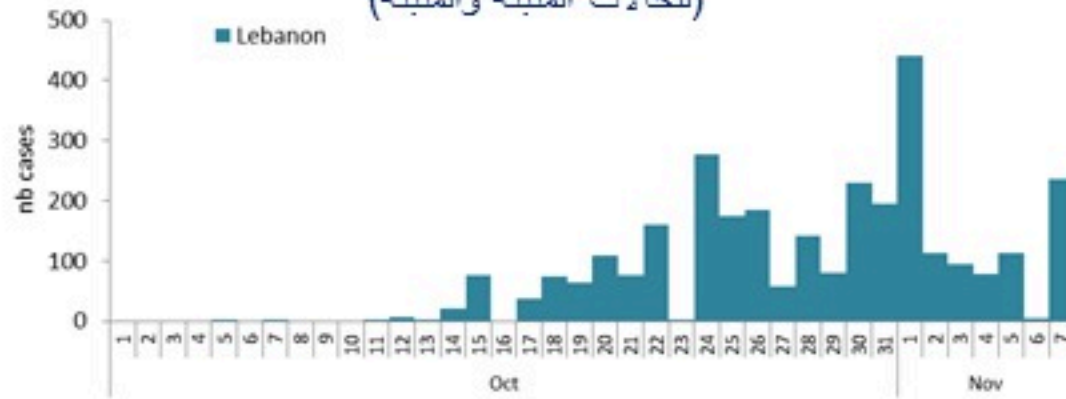
حسب الاستشفاء
(المشبهة والمثبتة)



حسب تطور
الحالة
(المشبهة والمثبتة)

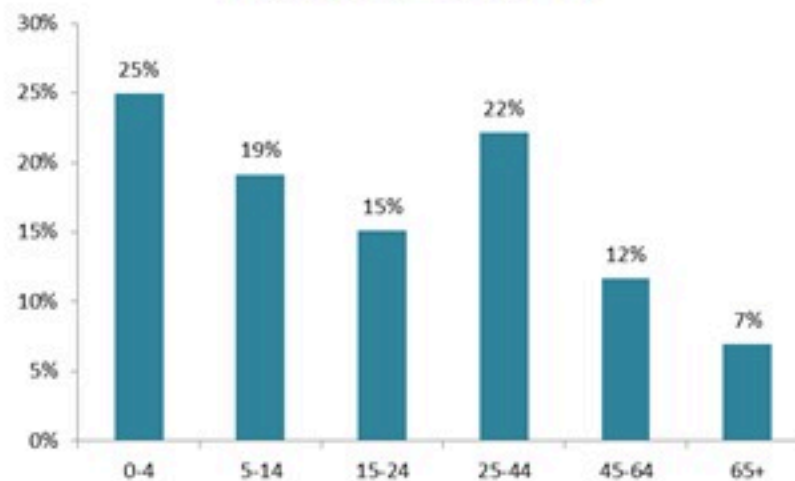
الوفيات (المثبتة)		الحالات المثبتة		كافة الحالات المشبهة والمثبتة	
التراكمي	الجديدة (آخر 24 ساعة)	التراكمي	الجديدة (آخر 24 ساعة)	التراكمي	الجديدة (آخر 24 ساعة)
18	0	455	7	2934	212

حسب تاريخ الإبلاغ
(للحالات المثبتة والمثبتة)

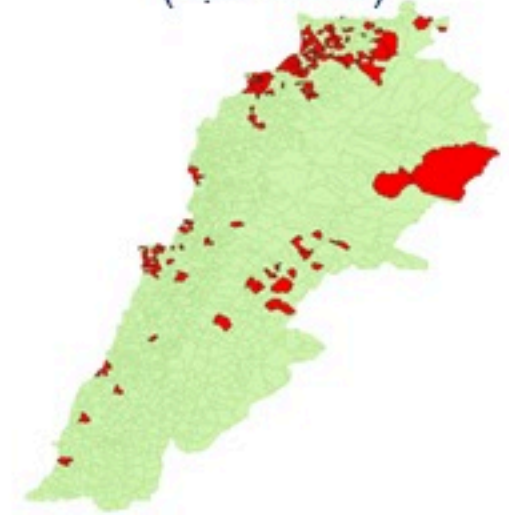


عدد الاسرة
المستعملة
(للحالات المشبهة
والمثبتة)
79

حسب الفئة العمرية
(للحالات المشبهة والمثبتة)



حسب البلدة
(للحالات المثبتة)



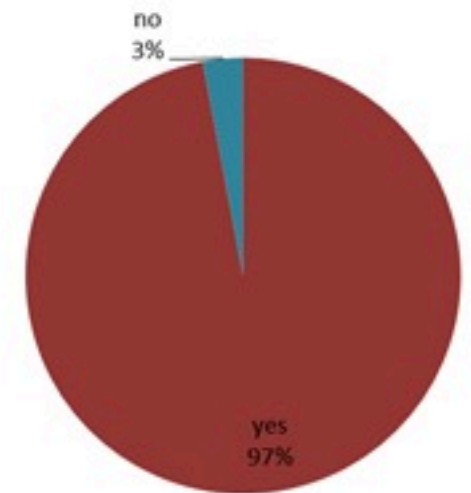
Cholera Surveillance Report

08 Nov 2022

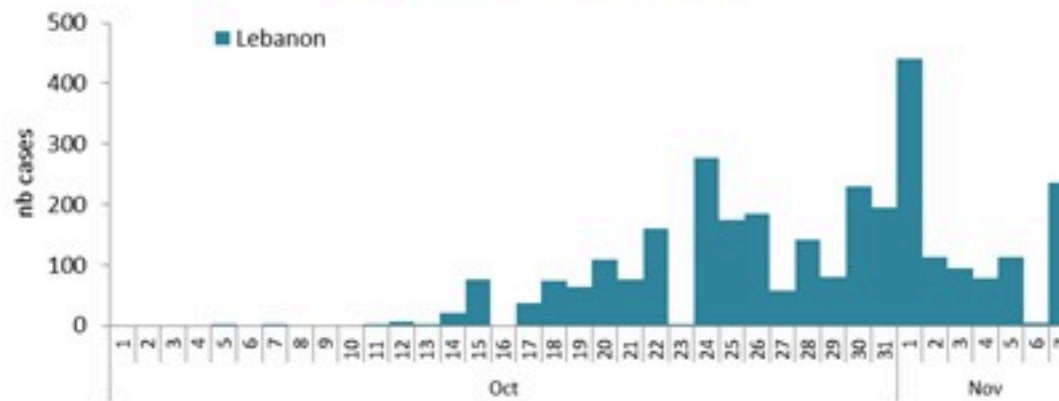
Call Centers
 1760 (Red Cross)
 1787 (MOPH)

All cases (suspected and confirmed)		Confirmed Cases		Deaths (confirmed)	
New (past 24 h)	Cumulative	New (past 24 h)	Cumulative	New	Cumulative
212	2934	7	455	0	18

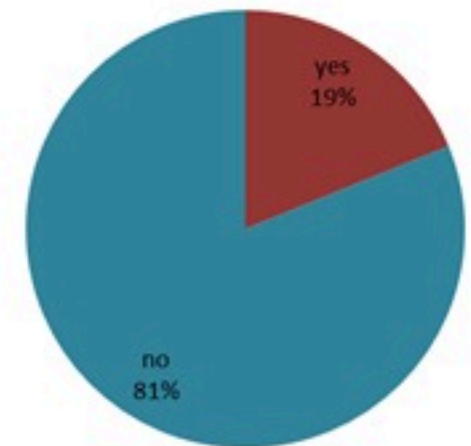
By Presence of Illness
(suspected and confirmed)



By date of report
(suspected and confirmed)



By Hospital Admission
(suspected and confirmed)

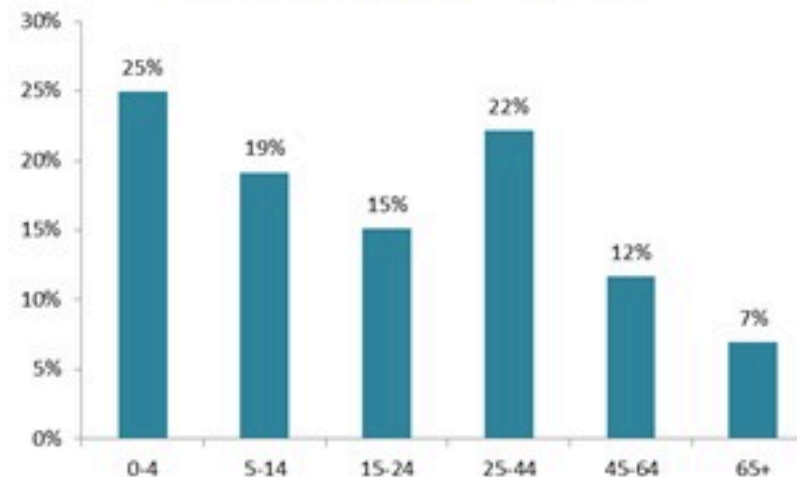


**Total occupied beds
(suspected/
confirmed)**
79

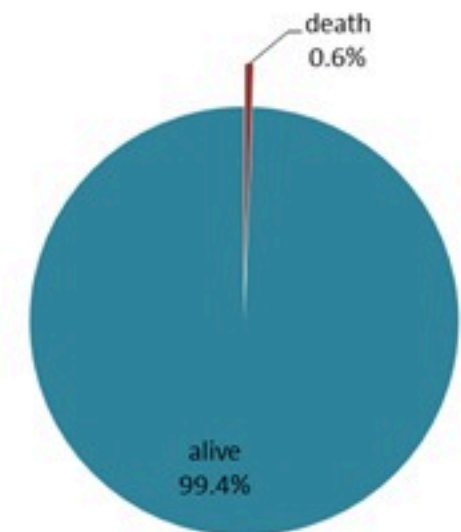
By locality (confirmed cases)



By age group
(suspected and confirmed cases)



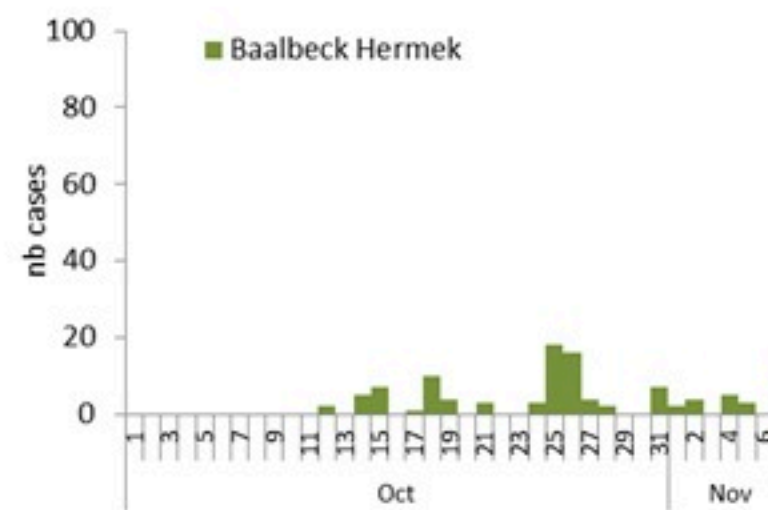
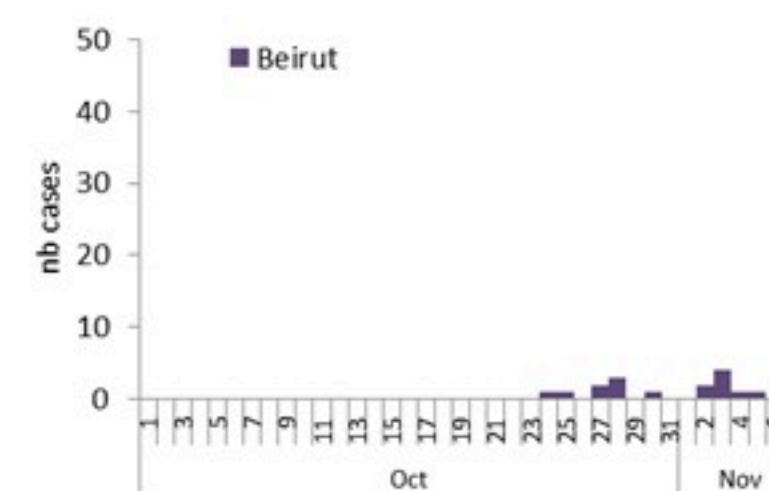
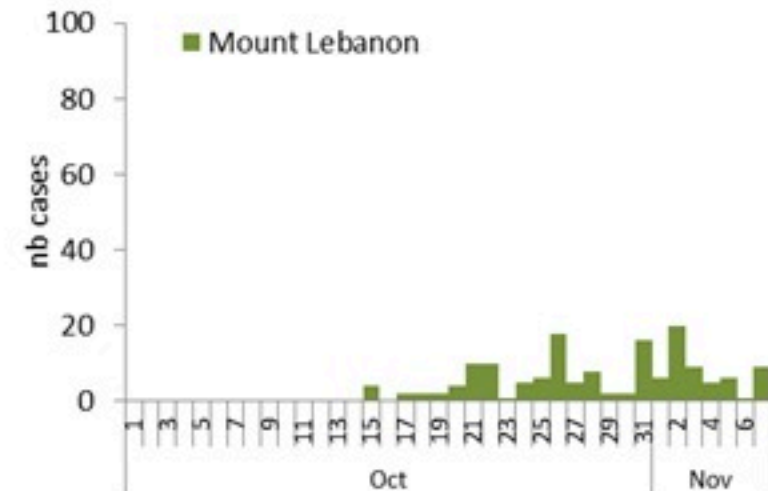
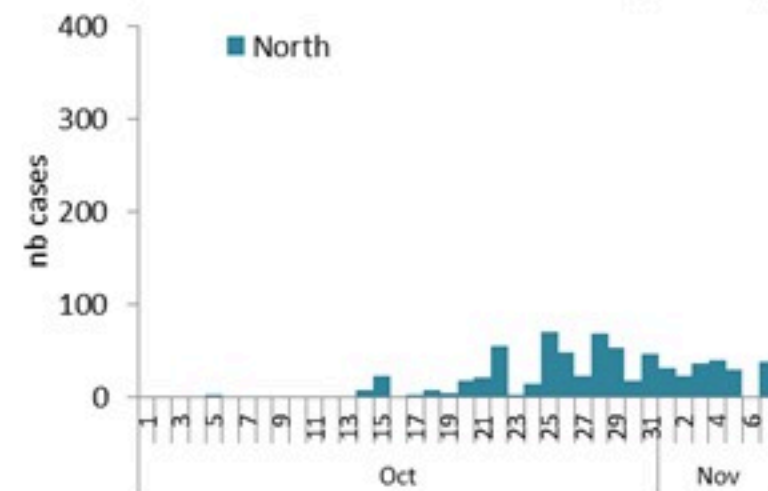
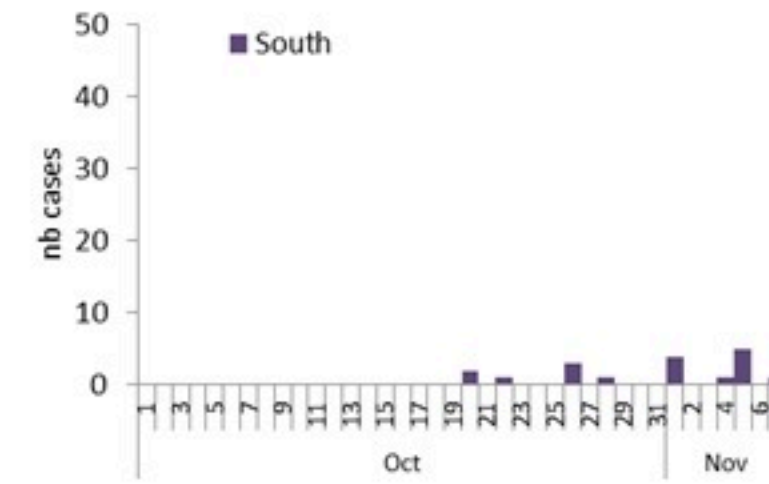
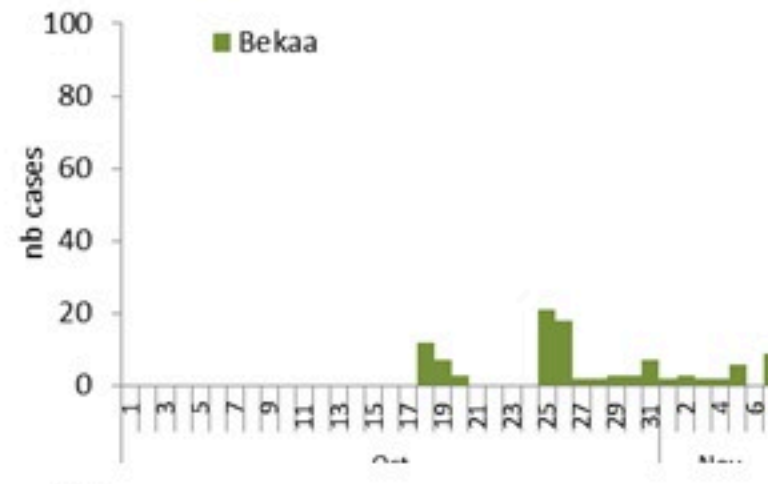
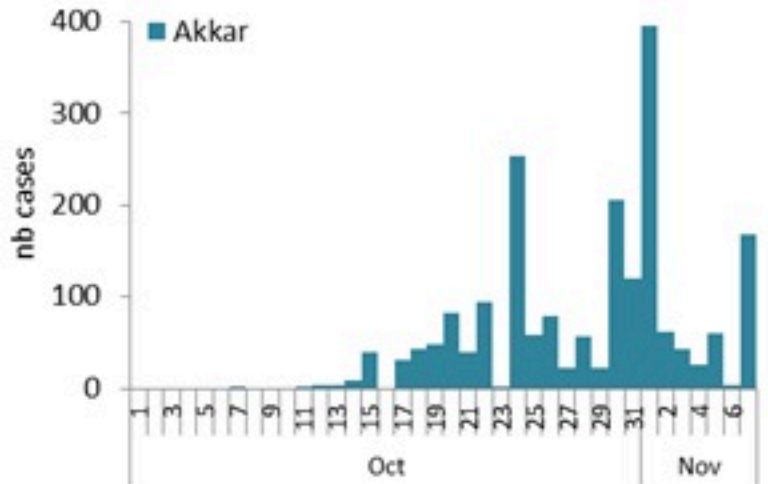
By Outcome
(suspected and confirmed)



Cholera Surveillance Report

08 Nov 2022

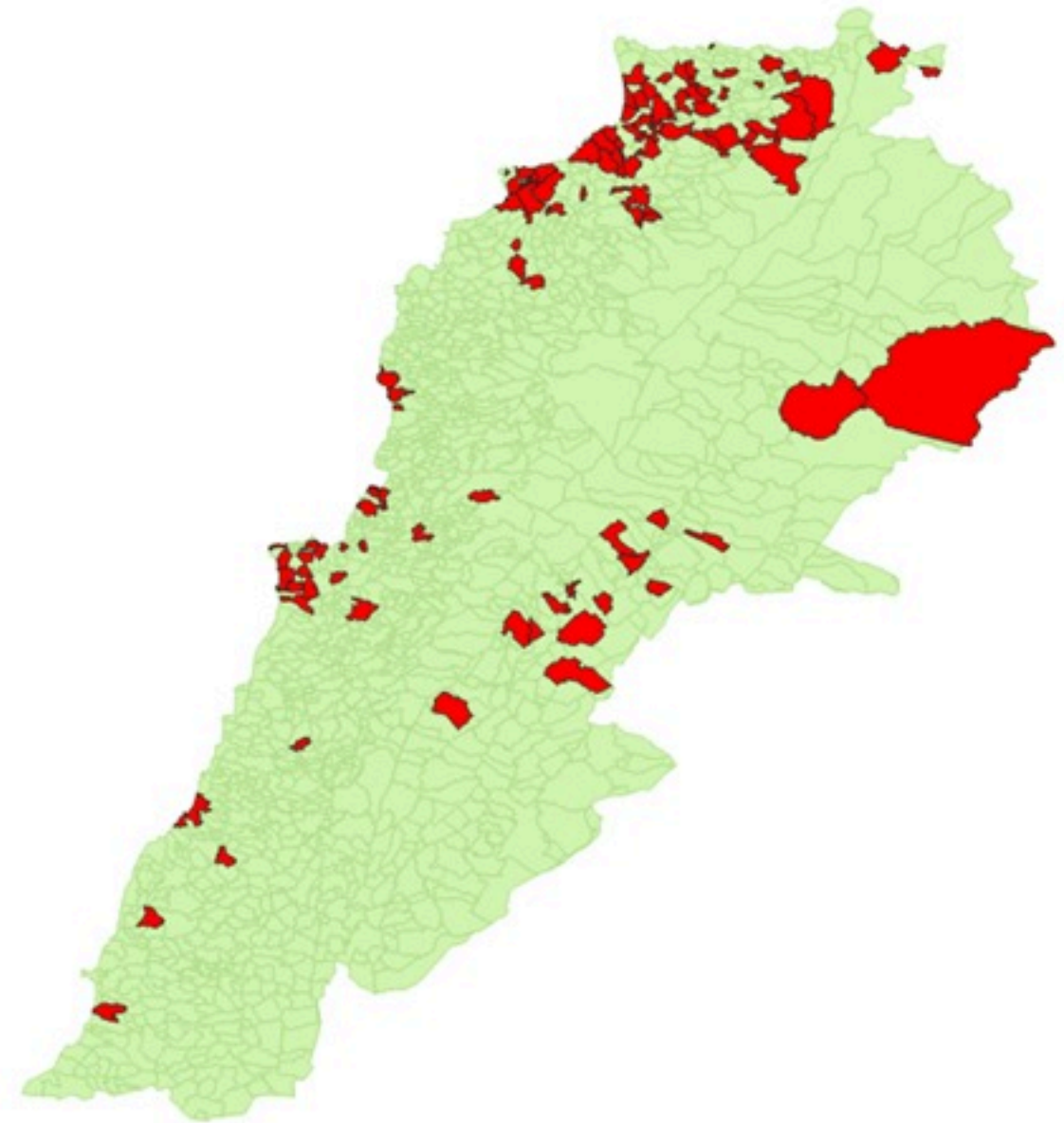
Epicurves by date of reporting by province
(suspected and confirmed)



Cholera Surveillance Update

08 Nov 2022

By locality (confirmed)
حسب البلدة (المتبئة)



Caza	Locality	cases	Caza	Locality	cases	
Akkar	Akkar Atika	1	Chouf	Zaarouriyeh	1	
	Amayer/Ouadi Khaled	1	Jbeil	Amchit	1	
	Arqa / Marlayet Haddara	2	Jbeil	Jbeil	1	
	Bebnine / Baddoua	128	Mastita	Mastita	1	
	Beit Hajj/Koucha/Khreibit Jindi	1	Kesrwan	Aintoura	1	
	Berqayel	4	Bqaatouta	Bqaatouta	6	
	Bezbina	1	Jounieh Ghadir	Jounieh Ghadir	3	
	Bireh	2	Jounieh Sarba	Jounieh Sarba	4	
	Bqerzla	1	Zouk Mosbeh	Zouk Mosbeh	1	
	Cheikh Ayache / Chir Hmairine	3	Koura	Aaba	1	
	Dahr Qambar /Hokr Qatteh	2	Dahr Ain / Ras Masqua	Dahr Ain / Ras Masqua	1	
	Fneydek	2	Rechdibbine	Rechdibbine	1	
	Halba	1	Kfar Aqa	Kfar Aqa	1	
	Hayssa	1	Metn	Bikfaya	1	
	Hoeuich	3	Bsalim	Bsalim	1	
	Jdeidat Qaytee	2	Daoura/Borj Hammoud	Daoura/Borj Hammoud	2	
	Kfar Harra	4	Mansourieh	Mansourieh	2	
	Kfar Melki	1	Zalqa	Zalqa	1	
	Khirbet Char	1	Minieh Danieh	Aadoua	1	
	Kneisset Hnaider	1	Assoun	Assoun	5	
	Kouachra	1	Bakhaaoun	Bakhaaoun	3	
	Koueikhat	2	Bhanine / Zouk Bhanine	Bhanine / Zouk Bhanine	2	
	Machha	2	Kfar Chellane	Kfar Chellane	1	
	Majdala	2	Merkebta	Merkebta	2	
	Memneaa	1	Minieh	Minieh	10	
	Mhamarah / Nahr Bared / Abdeh	11	Qattine	Qattine	2	
	Miniara	3	Rihanieh	Rihanieh	33	
	Mqyatea	1	Sir Dannieh	Sir Dannieh	1	
	Ouadi Jamous	4	Nabatieh	Zafta	1	
	Qaabrine / Tal Hayat	7	Saida	Ghazieh	1	
	Qbaiyat	1	Kharayeb	Kharayeb	3	
	Qjayat Akkar	2	Sour	Deir Qanoun Ain	4	
	Qobet Chamra	11	Tripoli	Baddawi	9	
	Rahbeh	1	Mina	Mina	1	
	Ransiyeh / Deir Dalloum	1	Qobbah	Qobbah	12	
	Saadine	4	Tripoli Gardens	Tripoli Gardens	1	
	Tell Abbas Charqui	2	Tripoli Haddadine	Tripoli Haddadine	1	
	Tleil	1	Tripoli Nouri	Tripoli Nouri	1	
	Zouq Haddara	1	Tripoli Souayqa / Jisrain	Tripoli Souayqa / Jisrain	3	
	Zouq Hosnieh	3	Tripoli Tabbaneh	Tripoli Tabbaneh	5	
	Aley	Aley	1	Tripoli Zeitoun	Tripoli Zeitoun	2
		Hay Selloum/Choueifat	1	West Beqaa	Kefraya	1
	Baabda	Borj Brajneh	3	Zahleh	Bar Elias	1
		Ghbayreh/Chiyah	1	Dalhamieh	Dalhamieh	1
		Hadath	1	Haouch Mandra	Haouch Mandra	1
	Baalbeck	Arsal	24	Hawch Omara	Hawch Omara	7
		Kfar Dabache	1	Majdal Anjar	Majdal Anjar	1
Khodr		1	Qob Elias	Qob Elias	9	
Temnine Faouqa		1	Raaït	Raaït	8	
Temnine Tahta		8	Saadnayel	Saadnayel	11	
Younine		1	Zahleh Maalaka	Zahleh Maalaka	1	
Beirut	Achrafieh	2	Zghorta	Mejdalya Zghorta	1	
	Ain Mraïsseh	1	Miriata	Miriata	4	
	Mdaouar / Mar Mikhael	1	Tallet Zghorta	Tallet Zghorta	1	
	Msaitbeh	1	Zghorta	Zghorta	2	

Figures in table are subject to modification following updates and data correction