

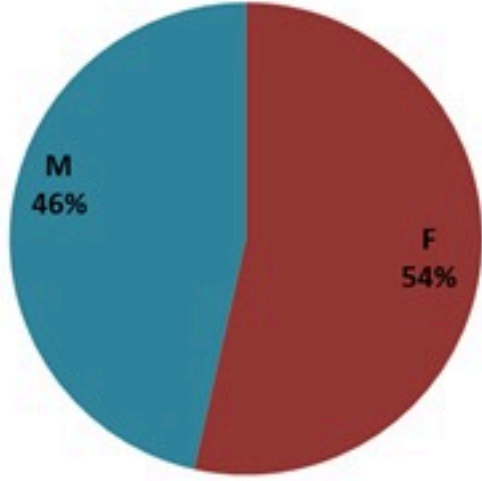
ترصد الكوليرا في لبنان 27 شباط 2023

الجمهورية اللبنانية
وزارة الصحة العامة
برنامج الترصد الوبائي



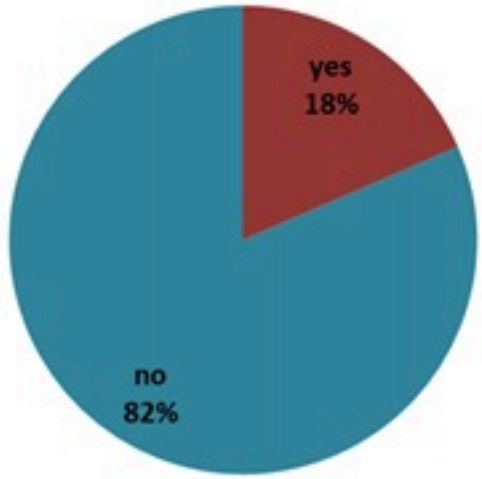
الخطوط الساخنة

1760 (الصليب الأحمر)
1787 (وزارة الصحة)

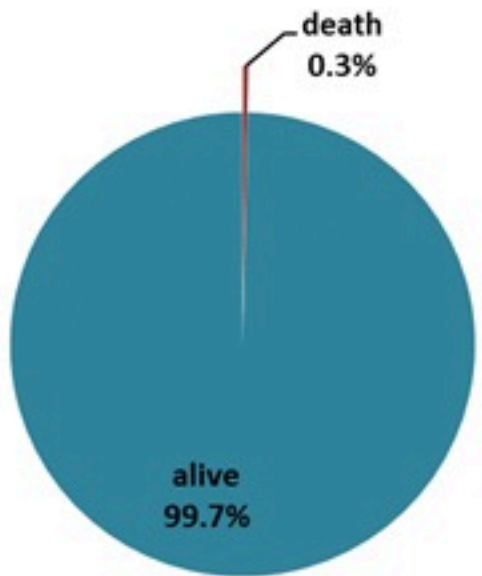


حسب الجنس
(المشبهة والمتبنة)

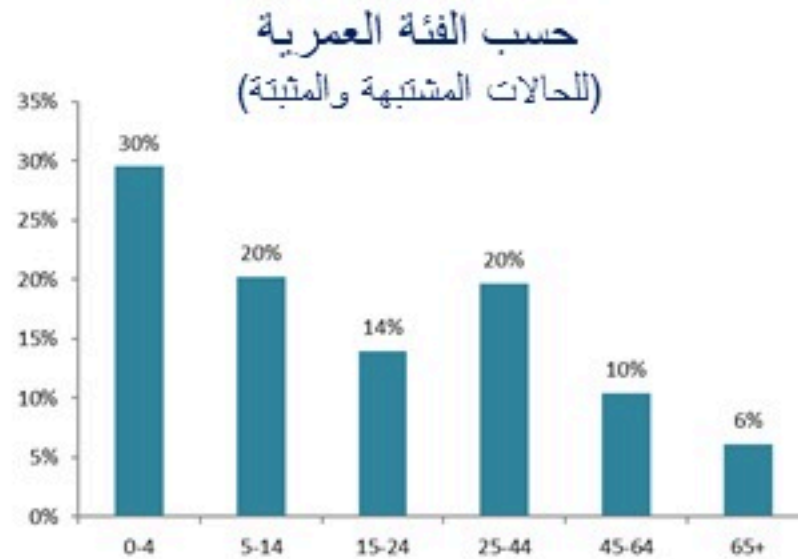
الوفيات (المتبنة)		الحالات المثبتة		كافة الحالات المشبهة والمتبنة	
التراكمي	الجديدة (آخر 24 ساعة)	التراكمي	الجديدة (آخر 24 ساعة)	التراكمي	الجديدة (آخر 24 ساعة)
23	0	671	0	6631	0



حسب الاستشفاء
(المشبهة والمتبنة)



حسب تطور
الحالة
(المشبهة والمتبنة)



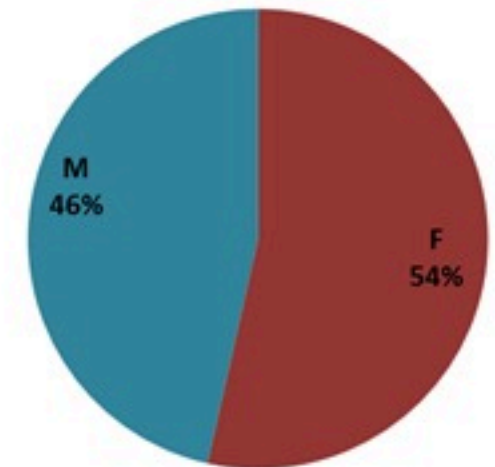
Cholera Surveillance Report

27 Feb 2023

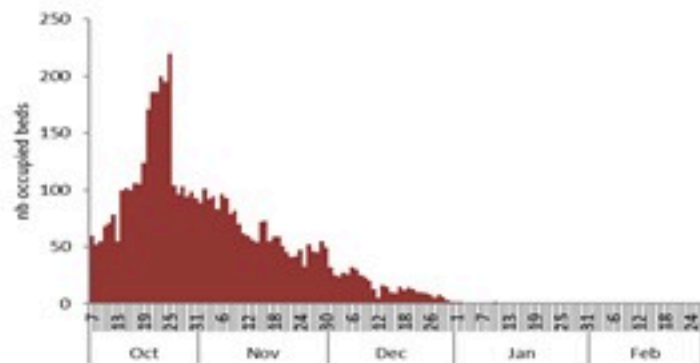
Call Centers
 1760 (Red Cross)
 1787 (MOPH)

All cases (suspected and confirmed)		Confirmed Cases		Deaths (confirmed)	
New (past 24 h)	Cumulative	New (past 24 h)	Cumulative	New	Cumulative
0	6631	0	671	0	23

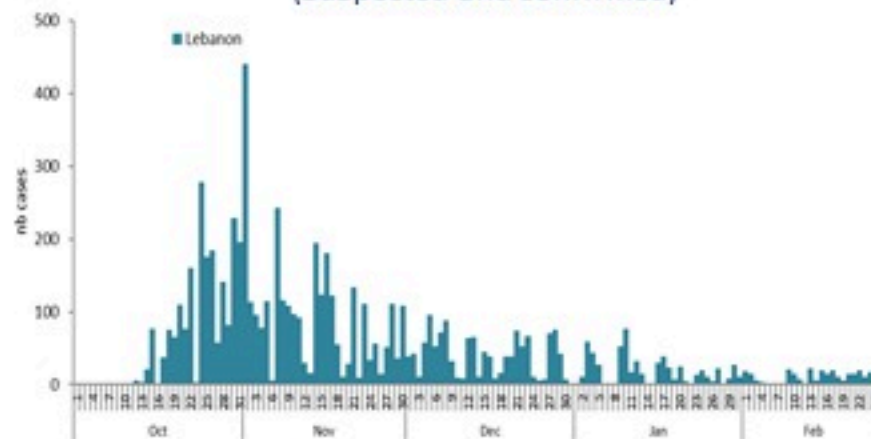
By Sex
(suspected and confirmed)



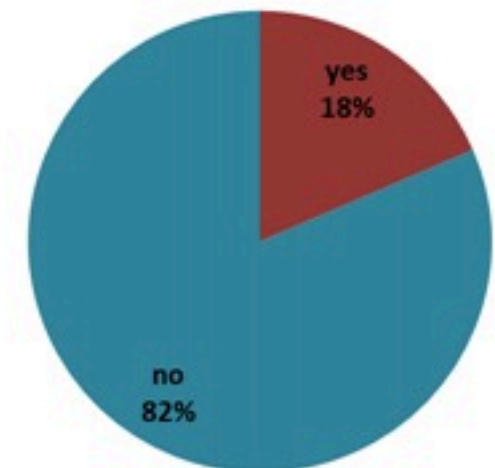
Occupied hospital beds
(suspected and confirmed)



By date of report
(suspected and confirmed)



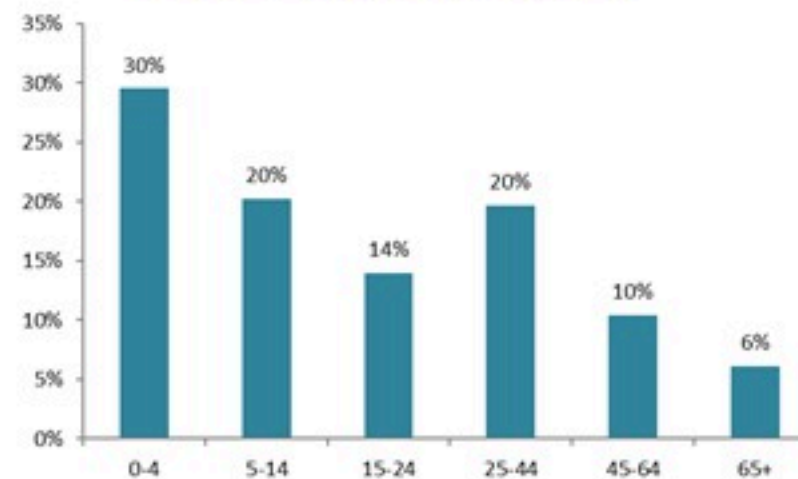
By Hospital Admission
(suspected and confirmed)



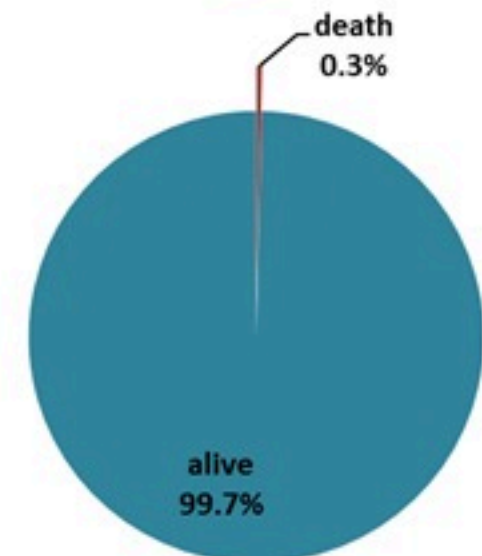
By locality (confirmed cases)



By age group
(suspected and confirmed cases)



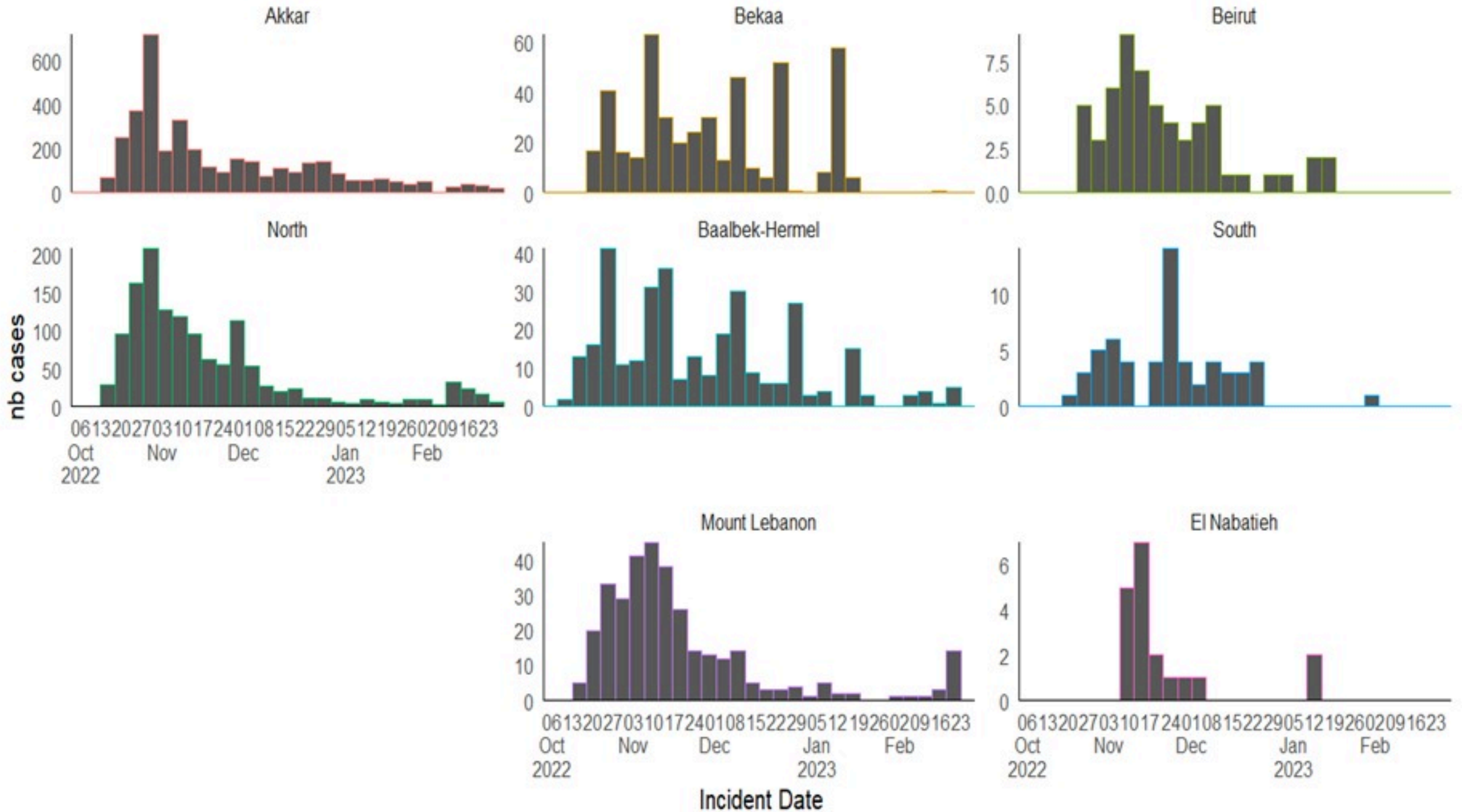
By Outcome
(suspected and confirmed)



Cholera Surveillance Report

27 Feb 2023

Epicurves by date of reporting by province
(suspected and confirmed)



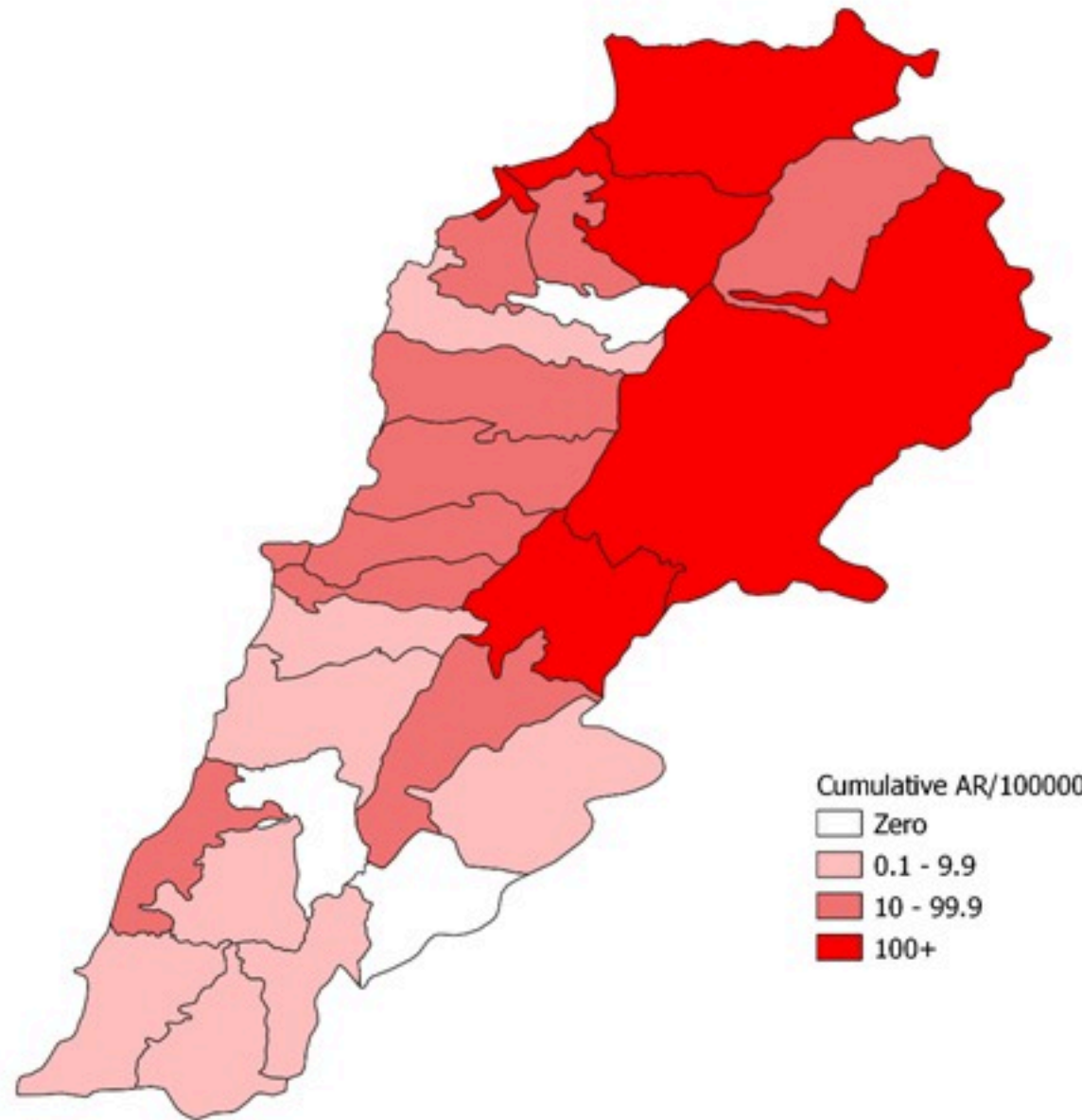
Cholera Surveillance Update

27 Feb 2023

4

Cumulative Attack Rate per 100,000 (suspected and confirmed)

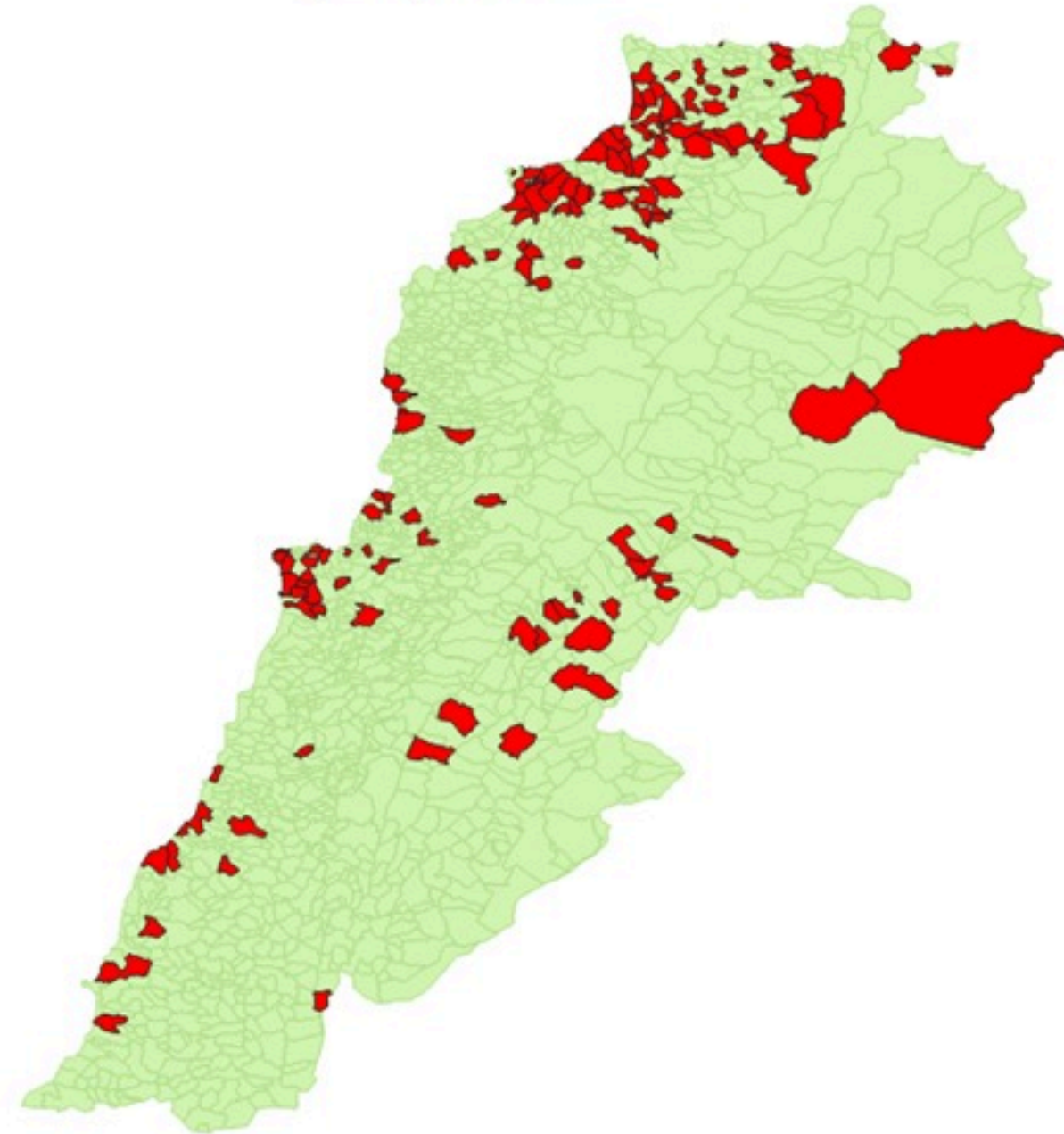
نسبة الحدوث التراكمية لكل مئة ألف نسمة (الحالات المشتبهية والمثبتة)



Cholera Surveillance Update

27 Feb 2023

By locality (confirmed)
حسب البلدة (المتبئة)



Figures in table are subject to modification following updates and data correction

Caza	Locality	cases	Caza	Locality	cases	
Akkar	Akkar Atika	1	Kiswan	Aintouna	1	
	Amayer/Quadi Khaled	1		Balfounh	1	
	Arqa / Marlayet Haddara	2		Bqatouta	7	
	Bebnine / Baddoua	16		Ghair	2	
	Beit Hajj/Koucha/Khreibit Jindi	1		Jounieh Ghadir	4	
	Bergayel	1		Jounieh Sabra	4	
	Bezbina	1		Yahchouch	1	
	Birch	2		Zouk Mosbeh	3	
	Bqerzia	1		Kouna	Aaba	1
	Cheikh Ayache / Chir Hmairine	1			Aufdiq	1
	Dahr Qambar /Hokr Qatteh	1			Basa	1
	Dabadab	1	Bsama		1	
	Dinbou	2	Dahr Ain / Ras Masqua		1	
	Fneydek	2	Rachdibbine		1	
	Halba	1	Kfar Aqa		1	
	Hayssa	1	Aadayssah		1	
	Hocouich	1	Marjoun		Biklaya	1
	Jdeidat Qaytee	1			Broummata	1
	Kfar Harra	4		Bsalim	1	
	Kfar Melki	1		Daruna/Borj Hammoud	2	
	Khane Hayat	1		Mansourieh	3	
	Khirbet Char	2		Zalqa	1	
	Kneisset Hnaldar	1		Minieh Danieh	Aadoua	1
	Kouachra	1	Assoun		4	
	Koukikhat	2	Ain El Tineh		1	
	Machha	2	Bahsa		1	
	Majdala	1	Bakhaoum		4	
	Memneaa	1	Bhanine / Zouk Bhanine		7	
	Mhamarah / Nahr Bared / Abdeh	22	Btamar		6	
	Minlara	1	Douniya		1	
	Mqyatea	1	Kfar Chollane		2	
	Ouadi Jamous	11	Kfar Habou		1	
	Qaabrine / Tal Hayat	1	Makabta		2	
	Qbalyat	1	Minieh		18	
	Qlayat Akkar	2	Qouatiyeh		1	
	Qobet Chamra	17	Qatime		3	
	Rahbeh	1	Rihanieh		35	
Ransiyeh / Deir Dalloum	1	Sir Dannieh	5			
Saadine	4	Saïda	Aanqoun		1	
Tell Abbas Charqui	2		Bissariyeh		4	
Tieil	1		Ghazieh	2		
Zouq Haddara	1		Khawayeb	3		
Zouq Hosnieh	1		Saïda	1		
			Sawfand	1		
Aley	Aley	1	Sour	Abbasiyeh	1	
	Hay Selloum/Chouifat	1		Deir Qaroun Ain	4	
Baabda	Ain Roumanneh	1	Tripoli	Badawi	16	
	Borj Brajneeh	3		Mina	7	
	Ghbayroh/Chiyah/Sabra	2		Qobbah	21	
	Hadath	1		Tripoli Bab Raml	1	
	Haret Hireik	1		Tripoli Gardans	2	
	Kfar Chima	1		Tripoli Haddadine	1	
	Mrejijh	2		Tripoli Nouri	1	
Baalbeck	Arsal	27		Tripoli Souayqa / Assaïn	3	
	Kfar Dabache	2		Tripoli Tabbaneh	21	
	Khodr	2		Tripoli Zaitoun	15	
	Temnine Faouqa	1	West Beqaa	Kamel Jaruz	1	
	Temnine Tahta	1		Kufaya	1	
Younine	1	Saghbine		1		
Batroun	Chikka	1		Zahleh	Aali Nahri	2
	Achrafieh	2			Bar Elias	2
	Ain Miralsseh	1			Dalhamieh	2
	Hamra	1			Harouch Mandra	1
	Mdsouar / Mar Mikhael	1	Hawch Omara		7	
Beirut	Msaïtbeh	1	Majdal Anjar		1	
	Chouf	Zaarouriyeh	1		Qob Elias	9
		Amchit	2		Raait	11
		Ehmej	1		Saadinayd	11
		Fidar	1		Talabaya	2
Halate		1	Zahleh Madaka	2		
Jbeil	Jbeil	1	Zghorta	Aalma	1	
	Mastita	2		Andeh	1	
				Kfar Dhaqous	2	
				Majdalya Zghorta	7	
				Mirata / Fozur	3	
				Sabwad	1	
		Zghorta		5		