

الخطوط الساخنة

1760 (الصليب الأحمر)
1787 (وزارة الصحة)

ترصد الكوليرا في لبنان 26 تشرين الثاني 2022

الجمهورية اللبنانية
وزارة الصحة العامة
برنامج الترصد الوبائي



حملة التلقيح ضد الكوليرا

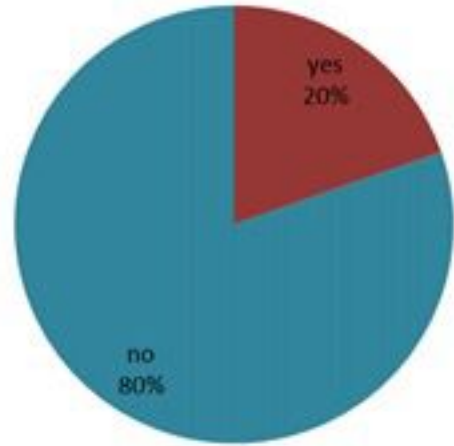
العدد التراكمي للجرعات لتاريخ أمس

التراكمي
(بعد التصحيح)

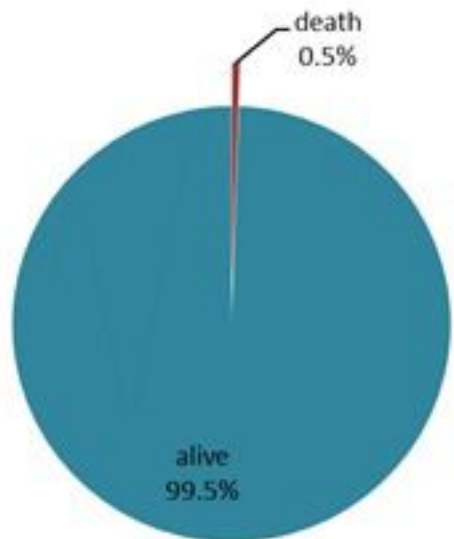
ليوم أمس

391,666

15,549



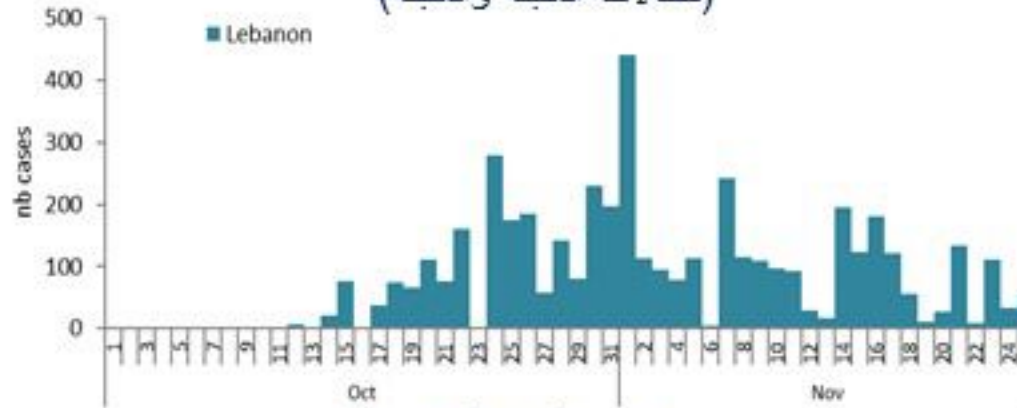
حسب الاستشفاء
(المشبهة والمتبنة)



حسب تطور
الحالة
(المشبهة والمتبنة)

الوفيات (المتبنة)		الحالات المثبتة		كافة الحالات المشبهة والمتبنة	
التراكمي	الجديدة (آخر 24 ساعة)	التراكمي	الجديدة (آخر 24 ساعة)	التراكمي	الجديدة (آخر 24 ساعة)
20	0	600	5	4389	52

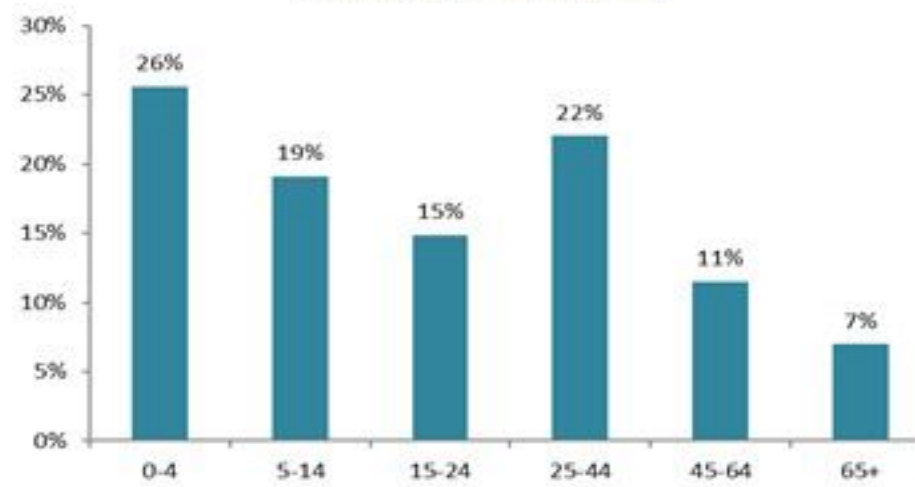
حسب تاريخ الإبلاغ
(للحالات المثبتة والمتبنة)



استعمال الاسره الاستشفائية
(للحالات المثبتة والمتبنة)



حسب الفئة العمرية
(للحالات المشبهة والمتبنة)



حسب البلده
(للحالات المثبتة)



Cholera Surveillance Report

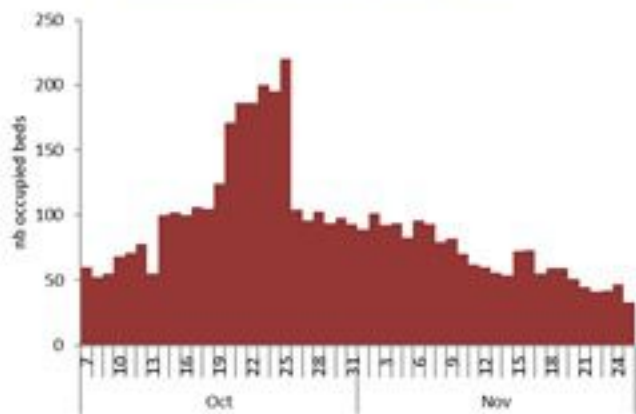
26 Nov 2022

Call Centers
 1760 (Red Cross)
 1787 (MOPH)

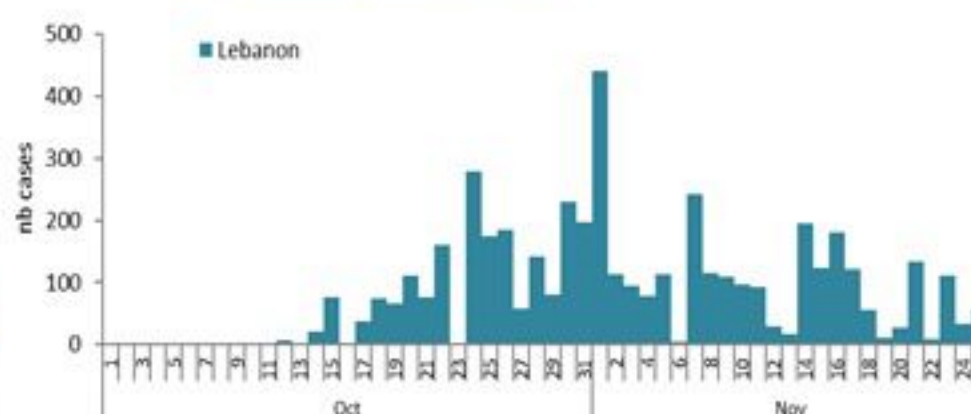
All cases (suspected and confirmed)		Confirmed Cases		Deaths (confirmed)	
New (past 24 h)	Cumulative	New (past 24 h)	Cumulative	New	Cumulative
52	4389	5	600	0	20

Cholera Vaccination Campaign (Cumulative of delivered doses up to past day)	
Past day	Cumulative (corrected)
15,549	391,666

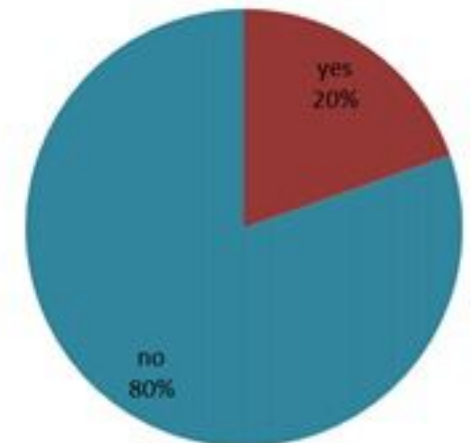
Occupied hospital beds
(suspected and confirmed)



By date of report
(suspected and confirmed)



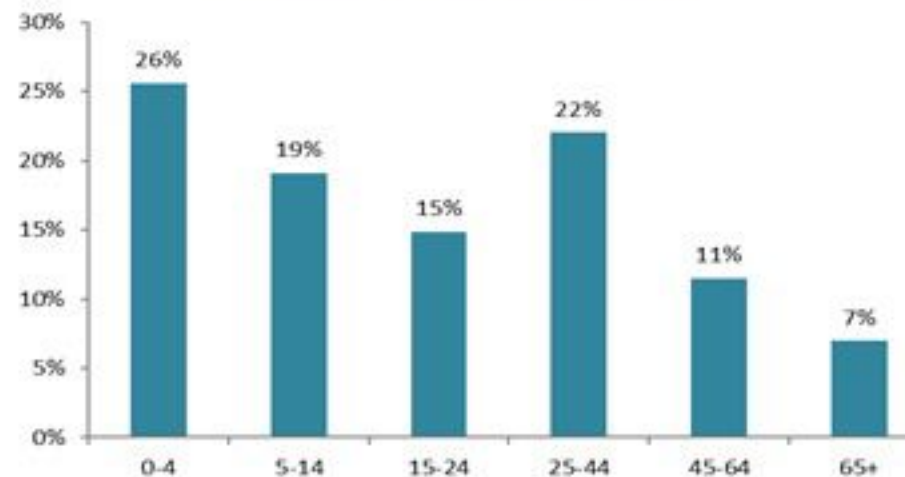
By Hospital Admission
(suspected and confirmed)



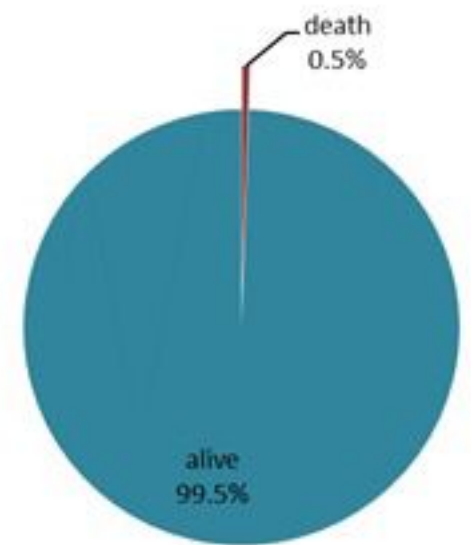
By locality (confirmed cases)



By age group
(suspected and confirmed cases)



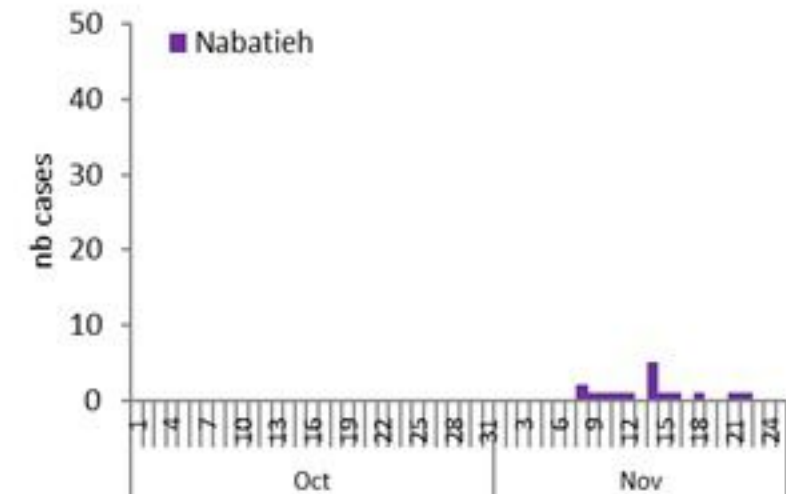
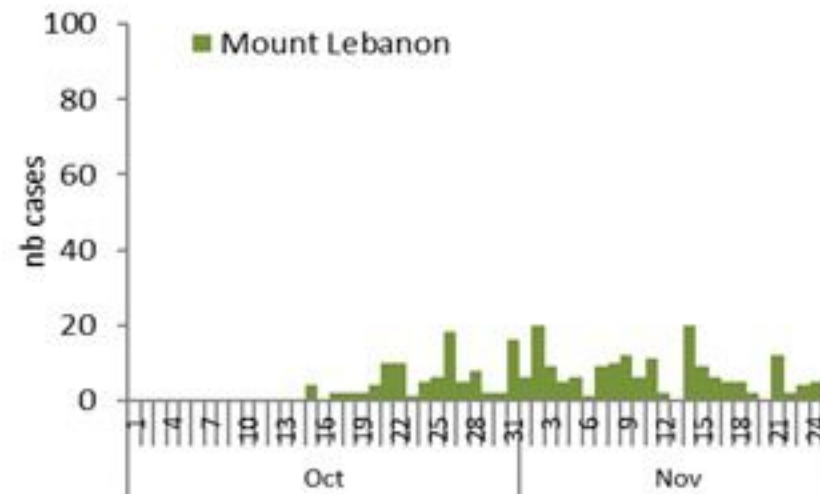
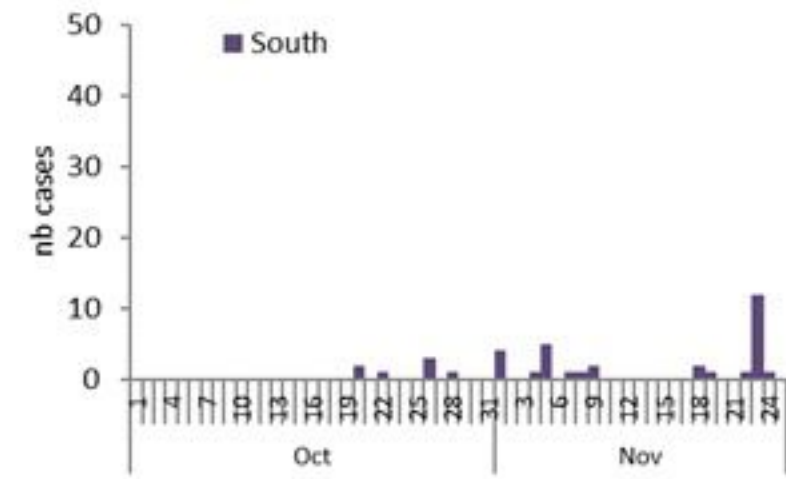
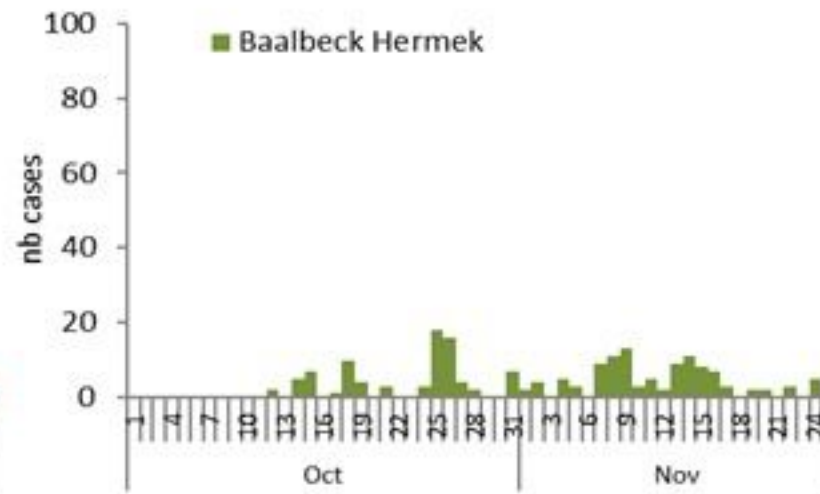
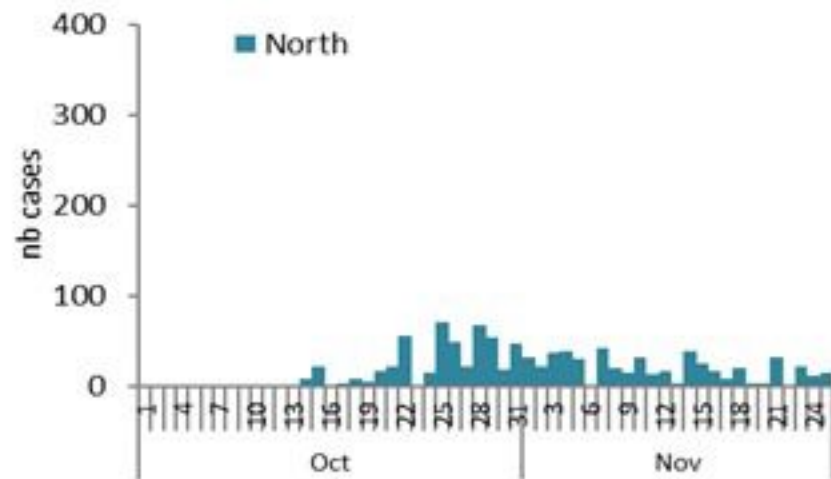
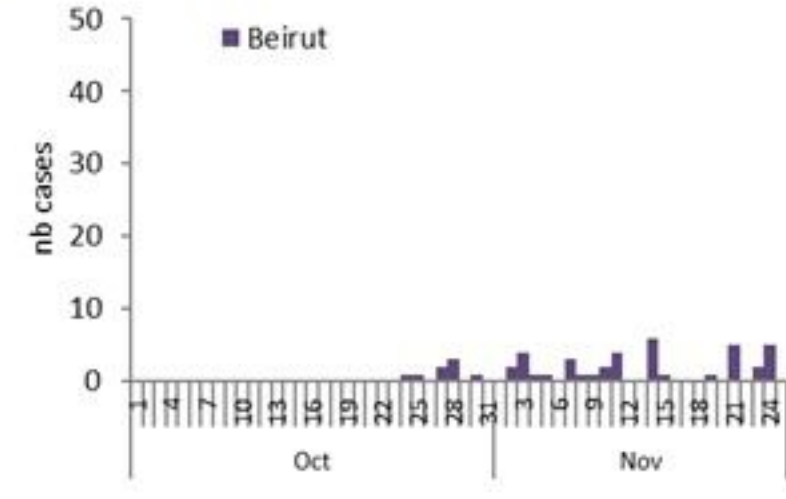
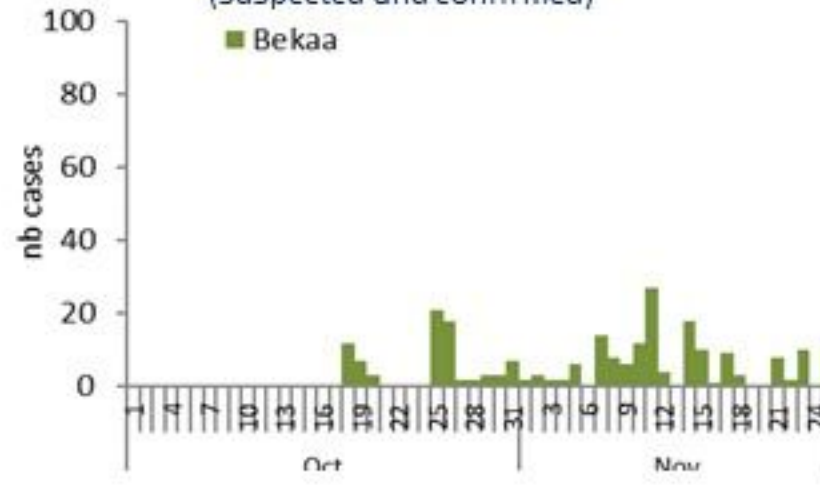
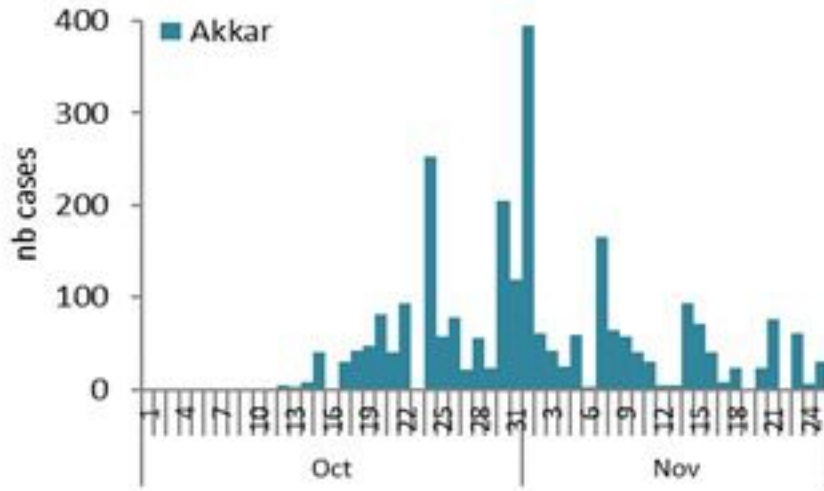
By Outcome
(suspected and confirmed)



Cholera Surveillance Report

26 Nov 2022

Epicurves by date of reporting by province (suspected and confirmed)

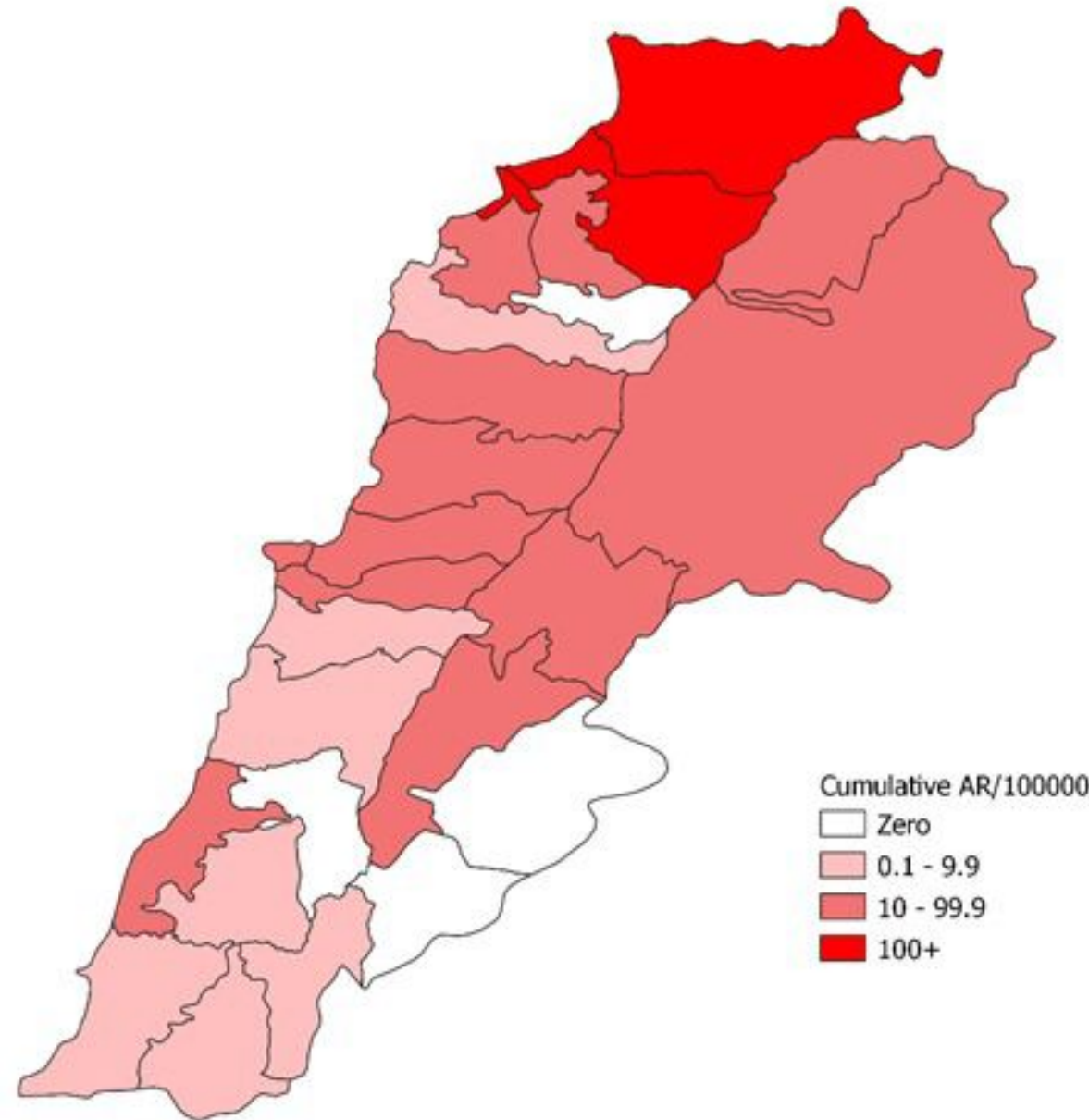


Cholera Surveillance Update

26 Nov 2022

4

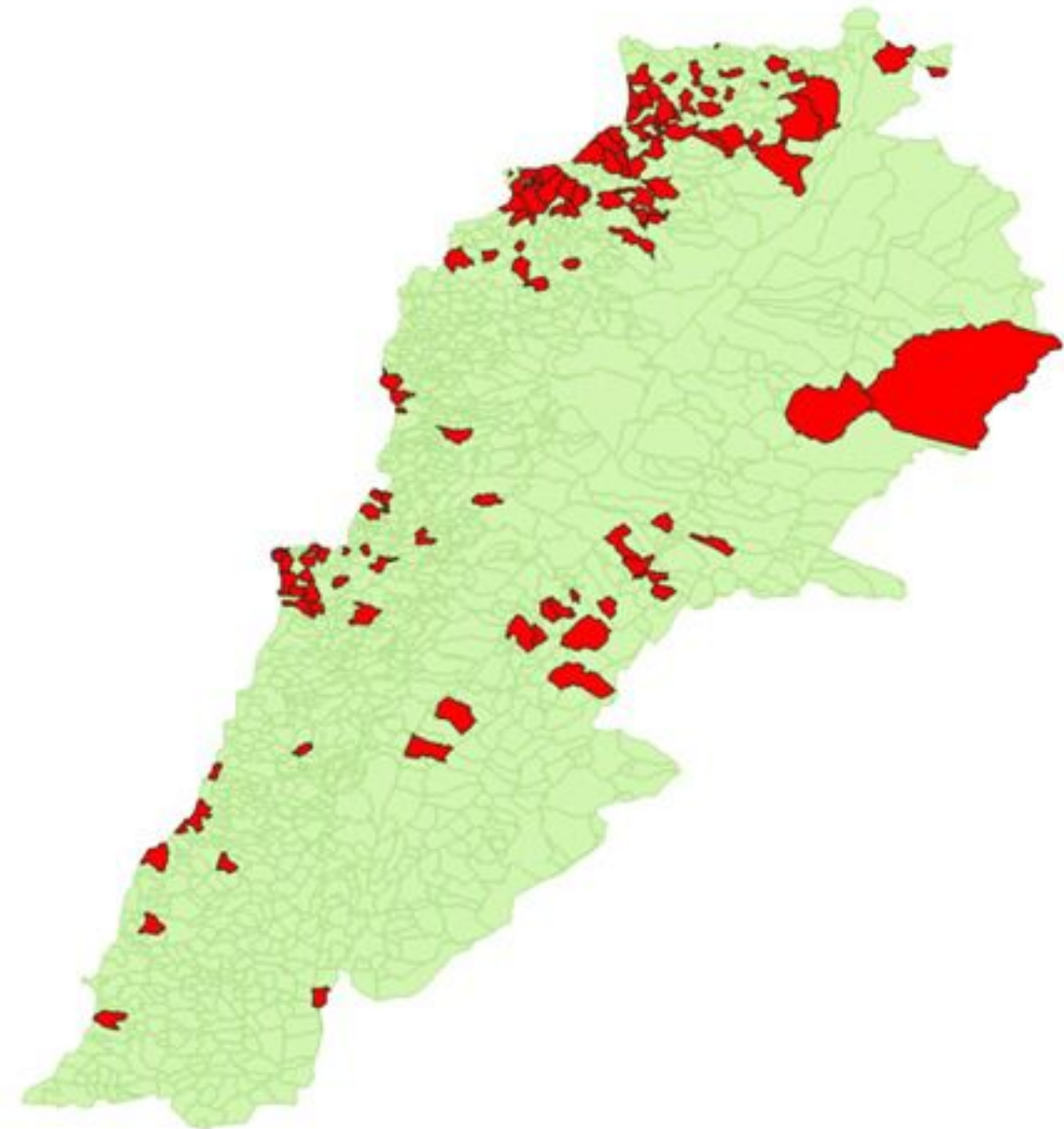
Cumulative Attack Rate per 100,000 (suspected and confirmed)
نسبة الحدوث التراكمية لكل مئة ألف نسمة (الحالات المشتبهية والمثبتة)



Cholera Surveillance Update

26 Nov 2022

By locality (confirmed)
حسب البلدة (المتبئة)



Caza	Locality	Cases	Caza	Locality	Cases
Akkar	Akkar Atika		Kesrwan	Aintoura	1
	Amayer/Quadi Khaled			Bqaatouta	7
	Arqa / Marlayet Haddara			Ghazir	2
	Bebnine / Baddoua	146		Jounieh Ghadir	4
	Belt Hajj/Koucha/Khreibit Jindi			Jounieh Sarba	4
	Birqayel			Yahdouch	1
	Bezbina			Zouk Mosbeh	3
	Birch		Koura	Aaba	1
	Bqerzia			Aafsdliq	1
	Chelkh Ayache / Chir Hmairine			Barsa	1
	Dahr Qambar /Hokr Qatteh			Dahr Ain / Ras Masqua	1
	Fneydek			Rechibbine	1
	Halba			Kfar Aqa	1
	Hayssa		Marjeoun	Aadysseh	1
	Hoculch		Metn	Biktaya	1
	Jdeidat Qaytee			Broummana	1
	Kfar Harra			Bsalim	1
	Kfar Melki			Daoura/Borj Hammoud	2
	Khirbet Char			Mansourieh	3
	Kneisset Hnaldar			Zalqa	1
	Kouadhra		Minieh Danieh	Aadous	1
	Koueikhat			Assoun	4
	Machha			Ain El Tineh	1
	Majdala			Bahsa	1
	Memneaa			Bakhaaoun	4
	Mhamarah / Nahr Bared / Abdeh	13		Bhanine / Zouk Bhanine	7
	Minlara			Btermaz	1
	Mqyatea			Douralya	1
	Ouadi Jamous	8		Kfar Chellane	2
	Qaabrine / Tal Hayat	7		Kfar Habou	1
	Qbalyat			Merkebta	2
	Qlayat Akkar	2		Minieh	18
	Qobet Chamra	16		Qoutlyeh	1
	Rahbeh			Qattine	3
	Ranzilyeh / Deir Dalloum			Rihanieh	35
	Saadine			Sir Dannieh	5
	Tell Abbas Charqui		Salda	Ghazieh	2
	Tiell			Kharayeb	3
	Zouq Haddara			Salda	1
	Zouq Hosnieh			Sarafand	1
Aley	Aley		Sour	Deir Qanoun Ain	4
	Hay Selloum/Choueifat			Baddawi	16
Baabda	Ain Roummaneh			Mina	7
	Borj Brajneh			Qobbah	20
	Ghbayreh/Chiyah/Sabra	2		Tripoli Bab Raml	1
	Hadath			Tripoli Gardens	1
	Kfar Chima			Tripoli Haddadine	1
	Mrejjih			Tripoli Nouri	1
Baalbeck	Arsal	27		Tripoli Souayqa / Jlsraïn	3
	Kfar Dabache			Tripoli Tabbaneh	20
	Khodr			Tripoli Zeitoun	4
	Temnine Faouqa		West Beqaa	Kefraya	1
	Temnine Tahta			Saghbine	1
	Younine		Zahleh	Aali Nahri	2
Batroun	Chikka			Bar Elias	2
Beirut	Achrafieh			Dalhamieh	1
	Ain Miralssch			Haouch Mandra	1
	Hamra			Hawch Omara	7
	Mdaouar / Mar Mikhael			Majdal Anjar	1
	Msaitbeh			Qob Elias	9
Chouf	Zaarouriyeh			Raalit	8
Jbeil	Amchit			Saadnayel	11
	Ehmej			Taalabaya	2
	Jbeil			Zahleh Maalaka	2
	Mastita		Zghorta	Aalima	1
				Ardeh	1
				Kfar Dlaqous	2
				Mejdalya Zghorta	6
				Miriata / Faour	3
				Sebaal	1
				Zghorta	4

Figures in table are subject to modification following updates and data correction