

الخطوط الساخنة

1760 (الصليب الأحمر)
1787 (وزارة الصحة)

ترصد الكوليرا في لبنان 24 تشرين الثاني 2022

الجمهورية اللبنانية
وزارة الصحة العامة
برنامج الترصد الوبائي



حملة التلقيح ضد الكوليرا العدد التراكمي للجرعات لتاريخ أمس

اليوم أمس	التراكمي (بعد التصحيح)
29,962	362,624

الوفيات (المثبتة)

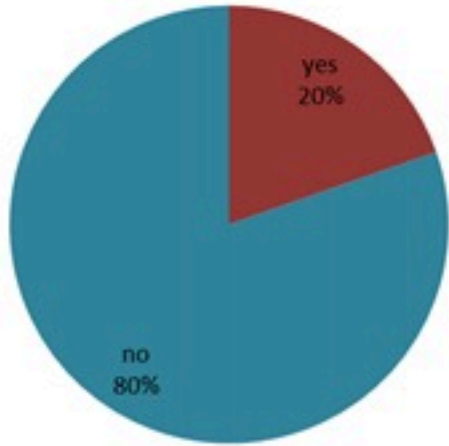
التراكمي	الجديدة (آخر 24 ساعة)
20	0

الحالات المثبتة

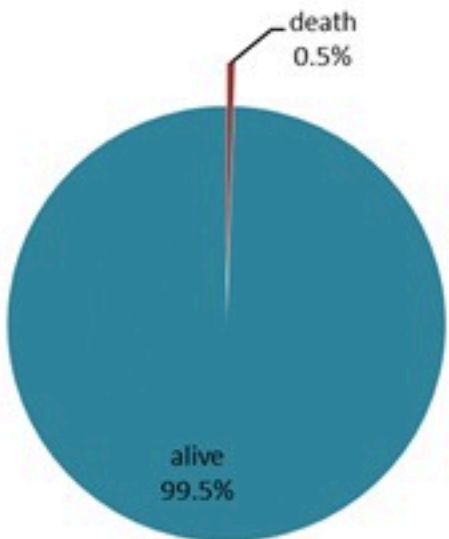
التراكمي	الجديدة (آخر 24 ساعة)
2	588

كافة الحالات المشبهة والمثبتة

التراكمي	الجديدة (آخر 24 ساعة)
4303	111

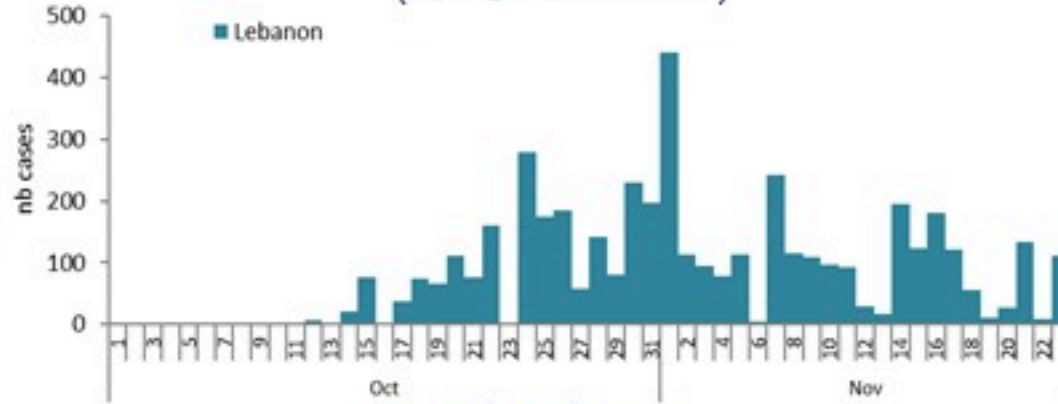


حسب الاستشفاء (المشبهة والمثبتة)

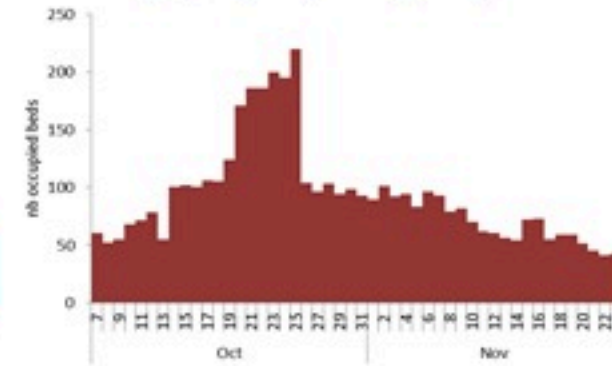


حسب تطور الحالة (المشبهة والمثبتة)

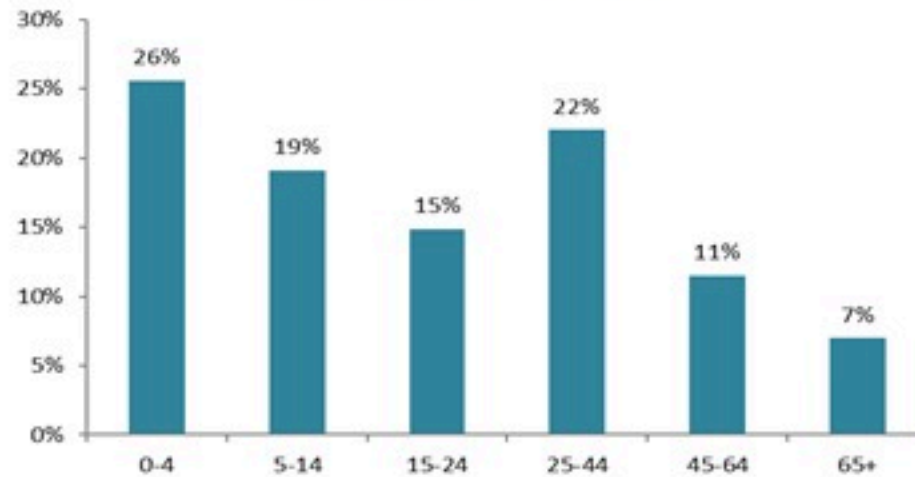
حسب تاريخ الإبلاغ (للحالات المثبتة والمثبتة)



استعمال الاسرة الاستشفائية (للحالات المثبتة والمثبتة)



حسب الفئة العمرية (للحالات المشبهة والمثبتة)



حسب البلدة (للحالات المثبتة)



Cholera Surveillance Report

24 Nov 2022

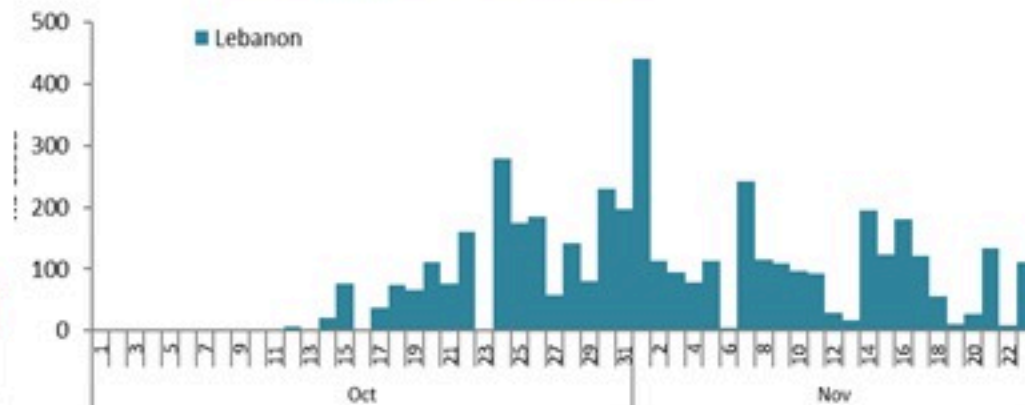
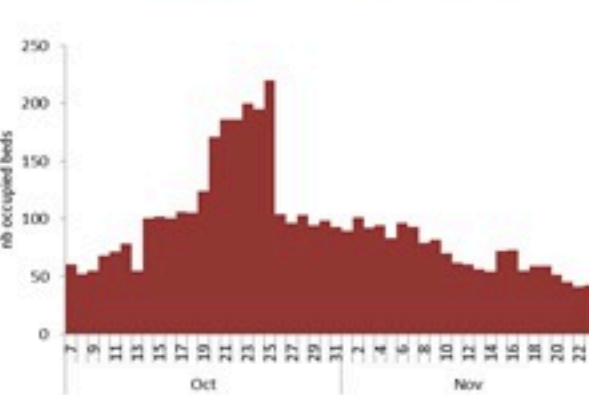
Call Centers
 1760 (Red Cross)
 1787 (MOPH)

All cases (suspected and confirmed)		Confirmed Cases		Deaths (confirmed)	
New (past 24 h)	Cumulative	New (past 24 h)	Cumulative	New	Cumulative
111	4303	2	588	0	20

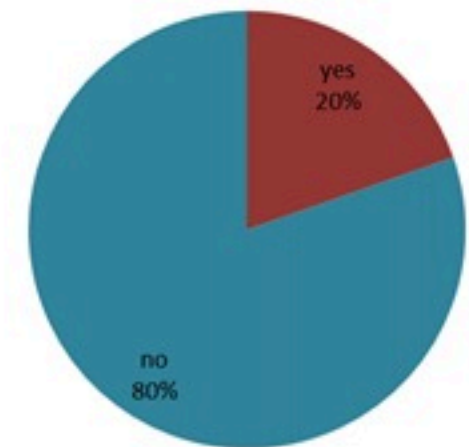
Cholera Vaccination Campaign (Cumulative of delivered doses up to past day)	
Past day	Cumulative (corrected)
29,962	362,624

Occupied hospital beds
(suspected and confirmed)

By date of report
(suspected and confirmed)



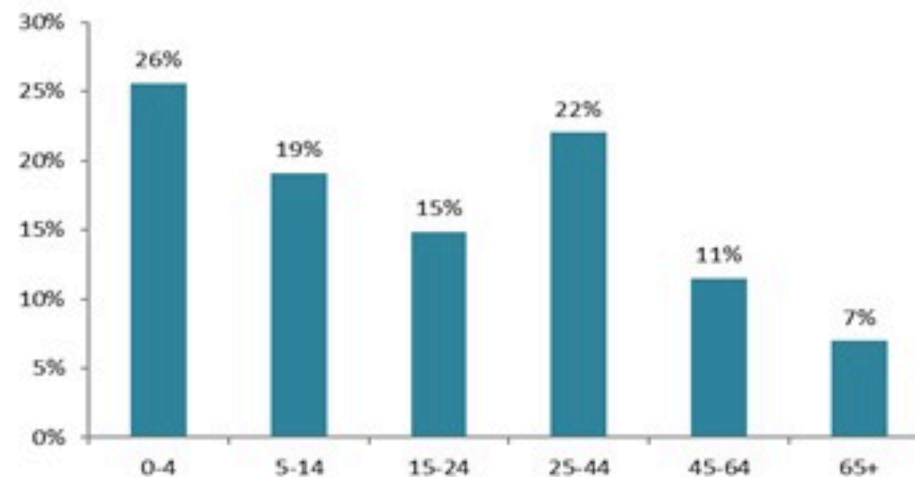
By Hospital Admission
(suspected and confirmed)



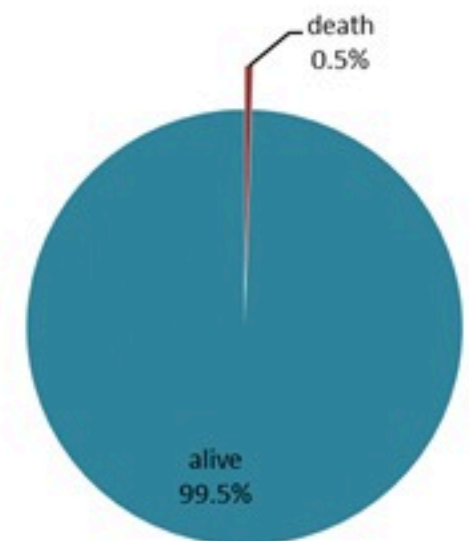
By locality (confirmed cases)



By age group
(suspected and confirmed cases)



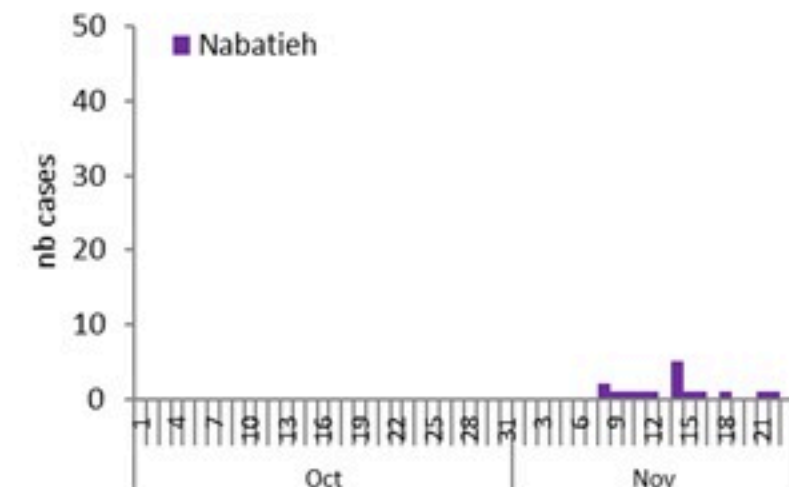
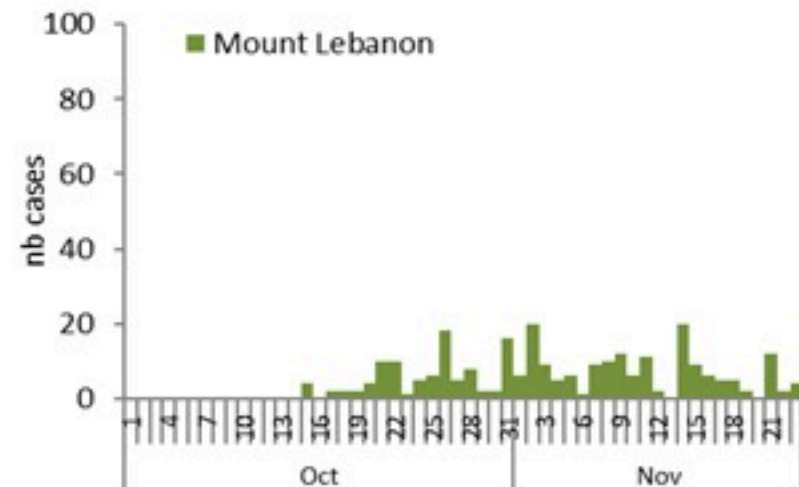
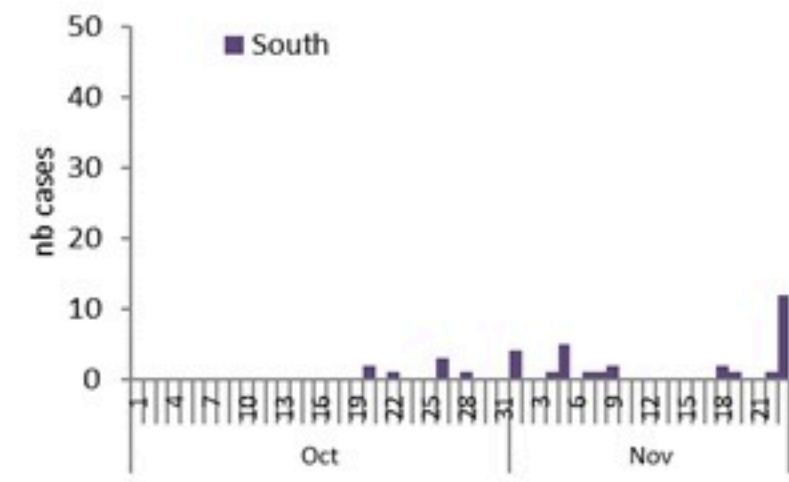
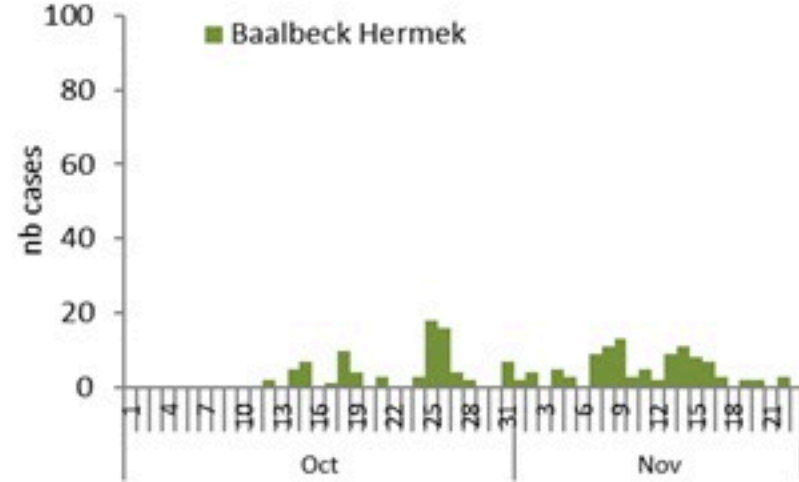
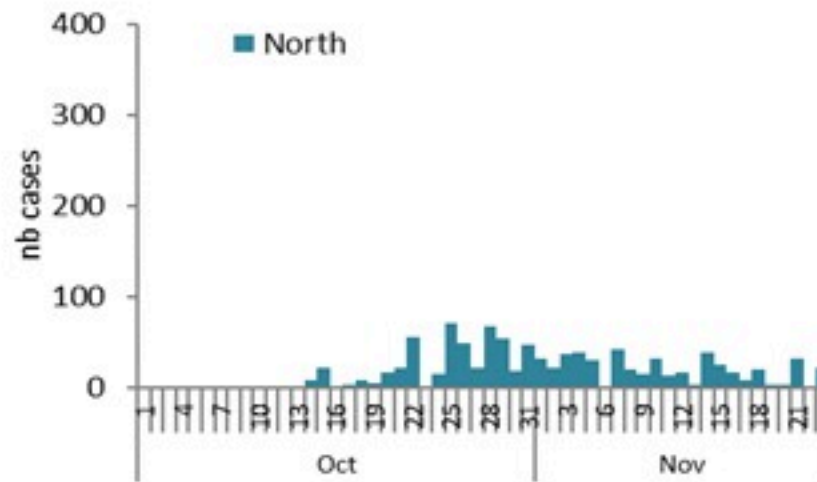
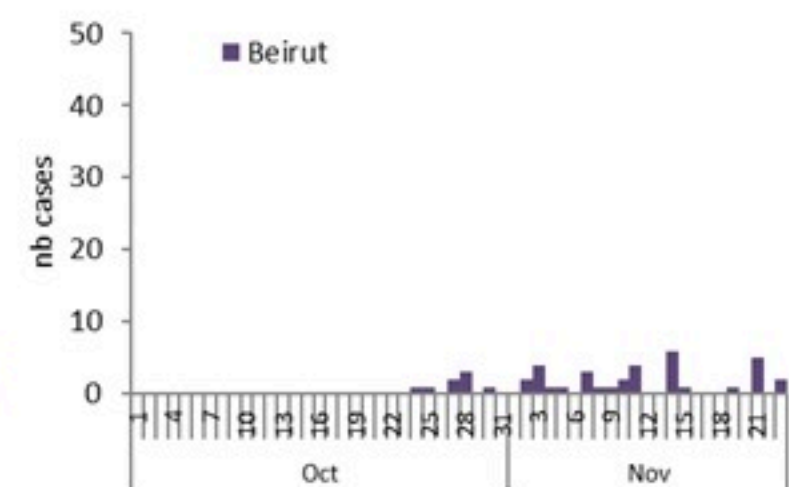
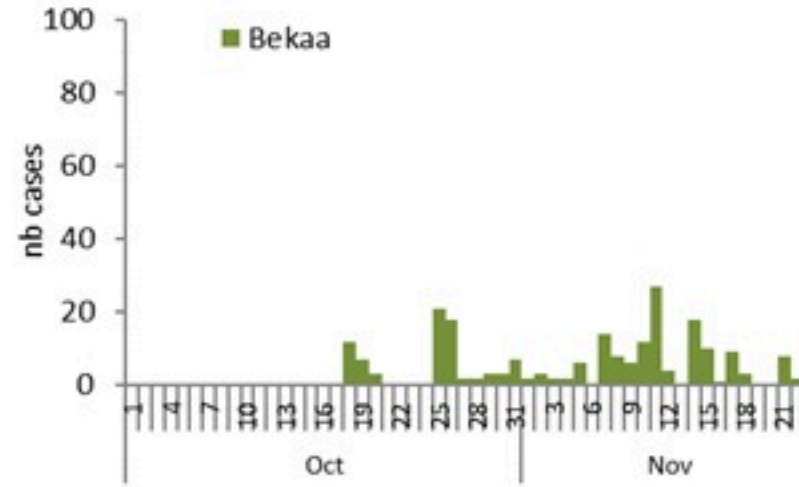
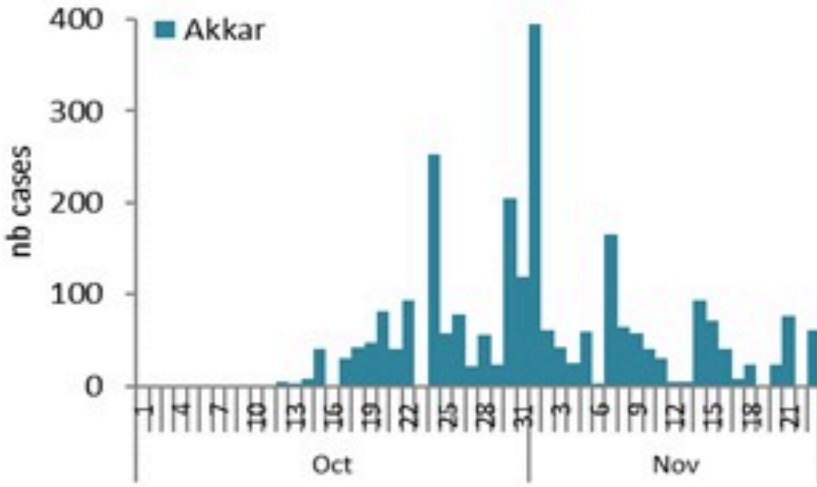
By Outcome
(suspected and confirmed)



Cholera Surveillance Report

24 Nov 2022

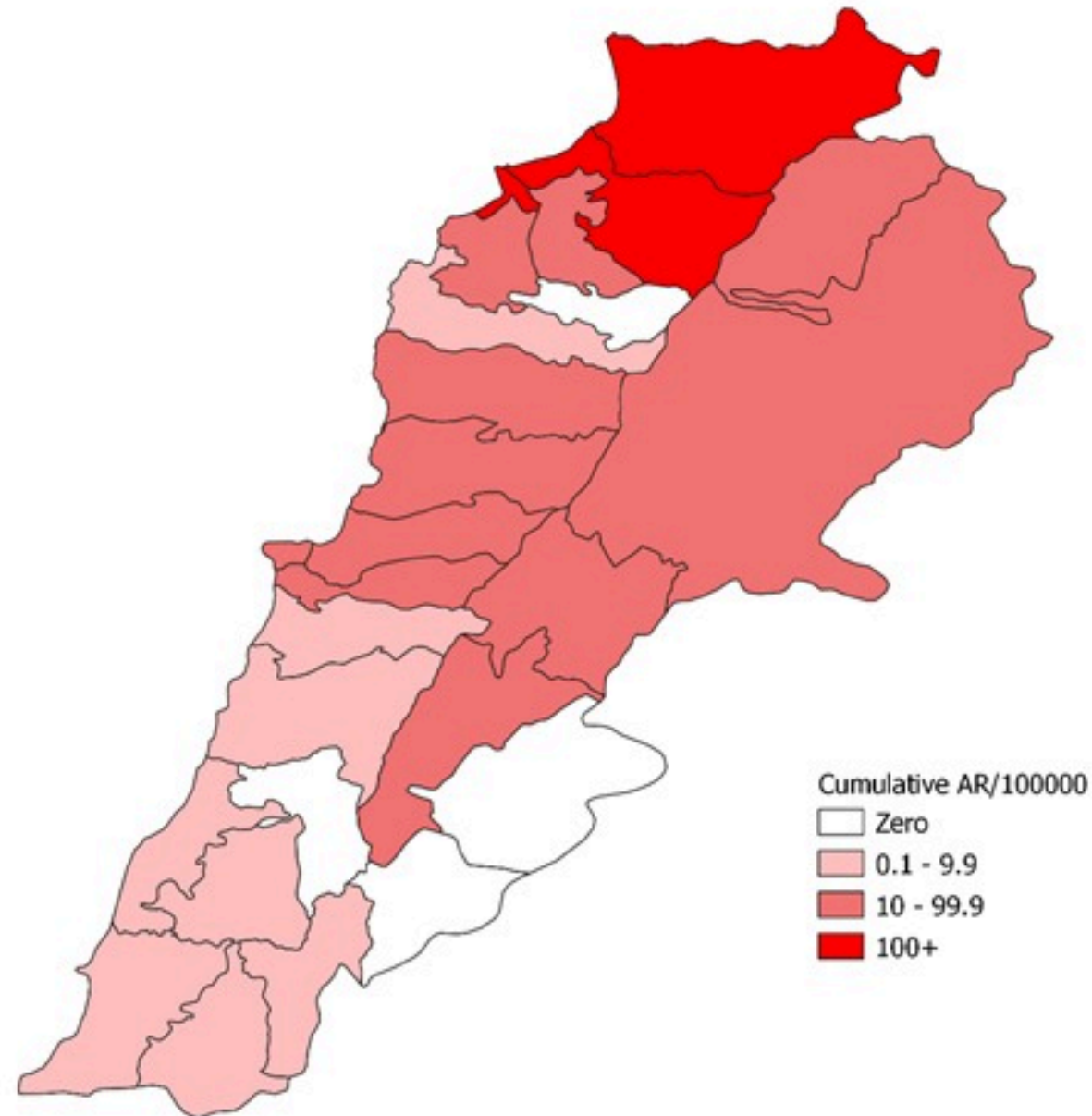
Epicurves by date of reporting by province



Cholera Surveillance Update

24 Nov 2022

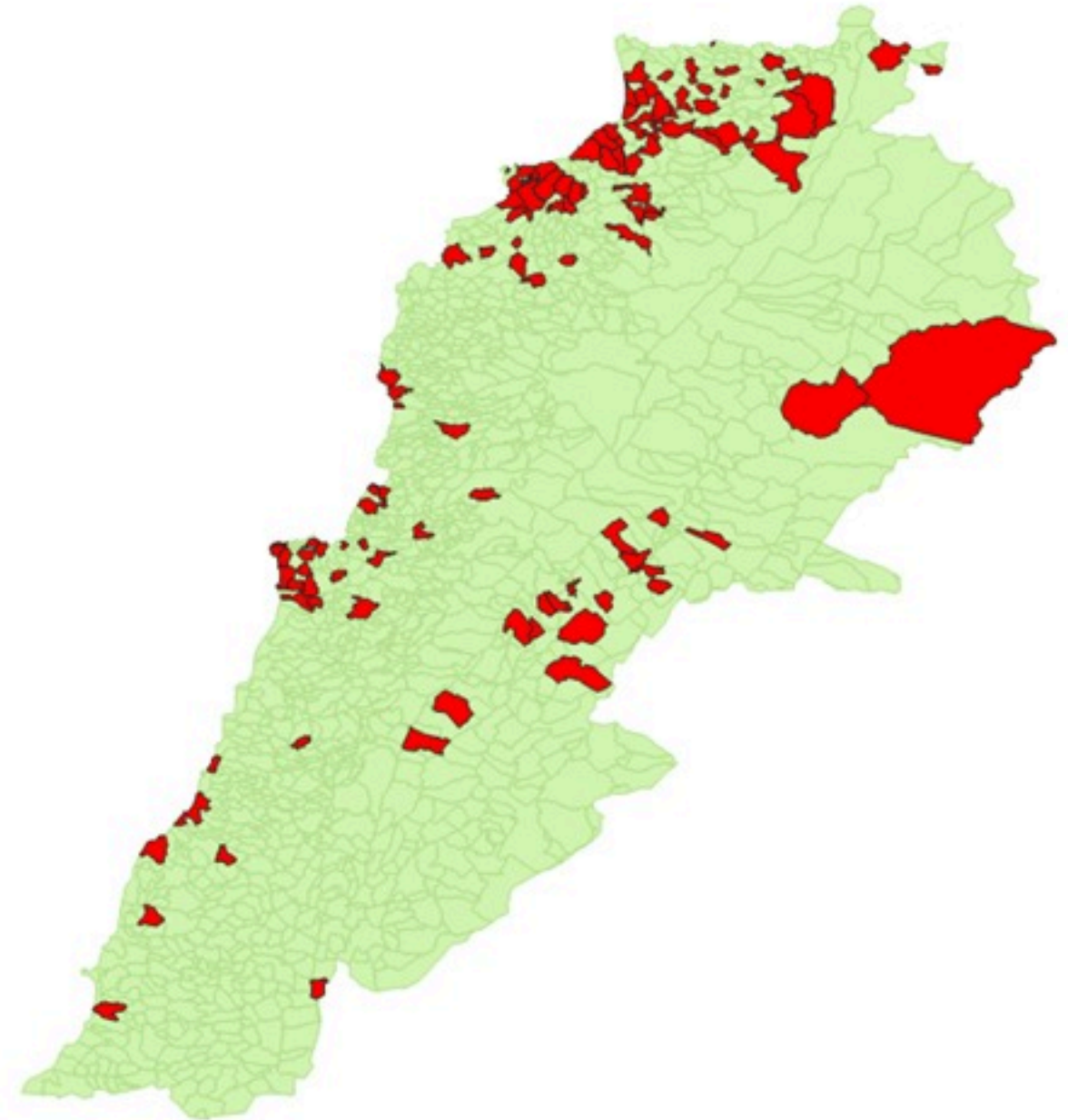
Cumulative Attack Rate per 100,000 (suspected and confirmed)
نسبة الحدوث التراكمية لكل مئة ألف نسمة (الحالات المشتبهية والمثبتة)



Cholera Surveillance Update

24 Nov 2022

By locality (confirmed)
حسب البلدة (المتبئة)



Caza	Locality	cases	Caza	Locality	cases
Akkar	Akkar Atika	1	Kesrwan	Aintoura	1
	Amayer/Quadi Khaled	1		Bqaatouta	7
	Arqa / Marlayet Haddara	2		Ghazir	2
	Bebnine / Baddoua	143		Jounieh Ghadir	4
	Belt Hajj/Koucha/Khreibit Jindi	3		Jounieh Sarba	4
	Berqayel	6		Yahdouch	1
	Bezbina	1		Zouk Mosbeh	3
	Birch	2	Koura	Aaba	1
	Bqerzia	1		Aafsdq	1
	Chelkh Ayache / Chir Hmalirine	3		Barsa	1
	Dahr Qambar /Hokr Qatfeh	2		Dahr Ain / Ras Masqua	1
	Fneydek	1		Rechdibline	1
	Halba	1		Kfar Aqa	1
	Hayssa	1	Marjeoun	Aadaysseh	1
	Hoculch	3	Metn	Biktaya	1
	Jdeidat Qaytee	3		Broummana	1
	Kfar Harra	4		Bsalim	1
	Kfar Melki	1		Daoura/Borj Hammoud	2
	Khirbet Char	2		Mansourieh	2
	Kneisset Hnaldar	1		Zalqa	1
	Kouchra	1	Minieh Danieh	Aadoua	1
	Koueikhat	2		Assoun	4
	Machha	2		Ain El Tineh	1
	Majdala	2		Bahsa	1
	Memnaa	1		Bakhaaoun	4
	Mhamarah / Nahr Bared / Abdeh	13		Bhanine / Zouk Bhanine	6
	Minlara	3		Douralya	1
	Mqyatea	1		Kfar Chellane	2
	Ouadi Jamous	7		Merkebta	2
	Qaabrine / Tal Hayat	7		Minieh	16
	Qbalyat	1		Oustiyeh	1
	Qlayat Akkar	2		Qattine	3
	Qobet Chamra	16		Rihanieh	35
	Rahbeh	1		Sir Dannieh	5
	Ransiyeh / Deir Dalloum	1	Nabatieh	Zafta	1
	Saadine	4	Salda	Ghazieh	2
	Tell Abbas Charqui	2		Kharayeb	3
	Tieil	1		Salda	1
	Zouq Haddara	1		Sarafand	1
	Zouq Hosnieh	3	Sour	Deir Qanoun Ain	4
Aley	Aley	1		Baddawi	16
	Hay Selloum/Choueifat	1		Mina	7
Baabda	Ain Roummaneh	1		Qobbah	19
	Borj Brajneh	3		Tripoli Bab Rami	1
	Ghbayreh/Chiyah	1		Tripoli Gardens	1
	Hadath	3		Tripoli Haddadine	1
	Kfar Chima	1		Tripoli Nouri	1
	Mreijih	1		Tripoli Souayqa / Jlsrain	3
Baalbeck	Arsal	27		Tripoli Tabbaneh	19
	Kfar Dabache	2		Tripoli Zeitoun	4
	Khodr	2	West Beqaa	Kefraya	1
	Temnine Faouqa	1		Saghbine	1
	Temnine Tahta	9	Zahleh	Aali Nahri	2
	Younine	1		Bar Elias	2
Batroun	Chikka	1		Dalhamieh	1
Beirut	Achrafieh	2		Haouch Mandra	1
	Ain Mralesseh	1		Hawch Omara	7
	Hamra	1		Majdal Anjar	1
	Mdaour / Mar Mikhael	1		Qob Elias	9
	Msaltbeh	1		Raalit	8
Chouf	Zaarouriyeh	1		Saadnayel	11
Jbeil	Amchit	1		Taalabaya	2
	Ehmej	1		Zahleh Maalaka	2
	Jbeil	1	Zghorta	Aalima	1
	Mastita	2		Ardeh	1
				Kfar Dilaqous	2
				Mejdalya Zghorta	6
				Miriata / Faour	3
				Sebaal	1
				Zghorta	4

Figures in table are subject to modification following updates and data correction