

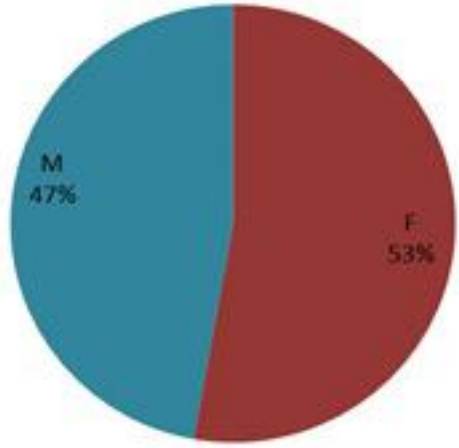
# ترصد الكوليرا في لبنان 19 كانون الاول 2022

الجمهورية اللبنانية  
وزارة الصحة العامة  
برنامج الترصد الوبائي



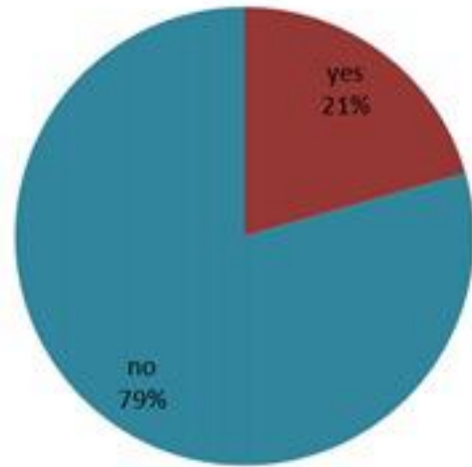
## الخطوط الساخنة

1760 (الصليب الأحمر)  
1787 (وزارة الصحة)



حسب الجنس  
(المشبهة والمتبنة)

الوفيات (المتبنة)		الحالات المثبتة		كافة الحالات المشبهة والمتبنة	
التراكمي	الجديدة (آخر 24 ساعة)	التراكمي	الجديدة (آخر 24 ساعة)	التراكمي	الجديدة (آخر 24 ساعة)
23	0	663	0	5328	0

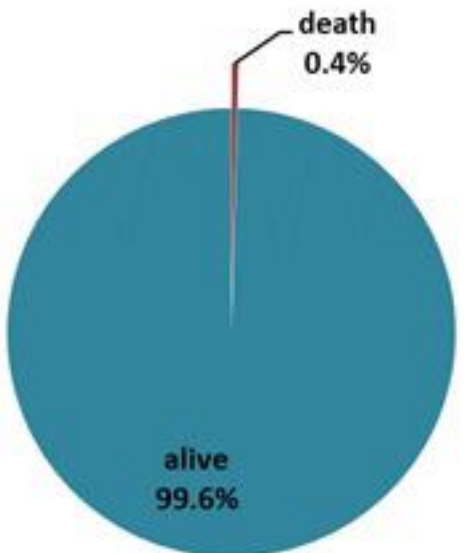


حسب الاستشفاء  
(المشبهة والمتبنة)

حسب تاريخ الإبلاغ  
(للحالات المثبتة والمتبنة)

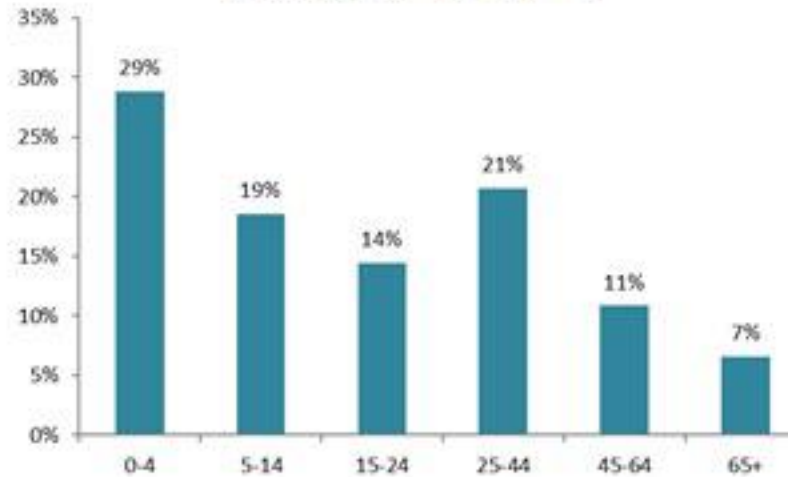


استعمال الاسرة الاستشفائية  
(للحالات المثبتة والمتبنة)



حسب تطور  
الحالة  
(المشبهة والمتبنة)

حسب الفئة العمرية  
(للحالات المثبتة والمتبنة)



حسب البلدة  
(للحالات المثبتة)



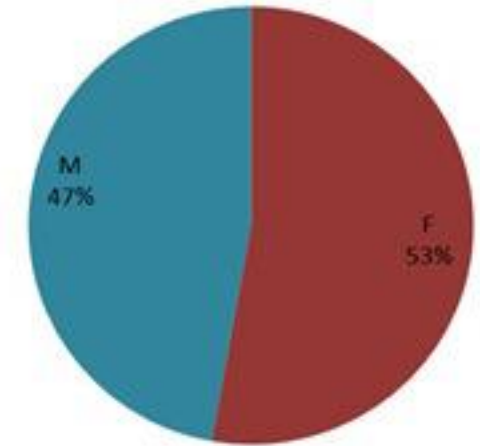
# Cholera Surveillance Report

## 19 Dec 2022

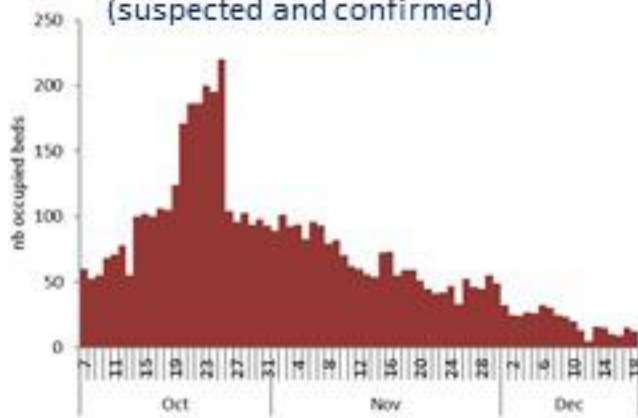
**Call Centers**  
 1760 (Red Cross)  
 1787 (MOPH)

All cases (suspected and confirmed)		Confirmed Cases		Deaths (confirmed)	
New (past 24 h)	Cumulative	New (past 24 h)	Cumulative	New	Cumulative
<b>0</b>	<b>5328</b>	<b>0</b>	<b>663</b>	<b>0</b>	<b>23</b>

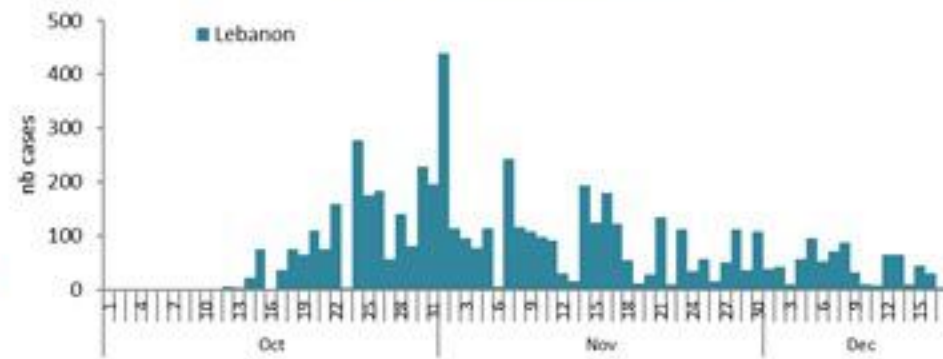
By Sex  
(suspected and confirmed)



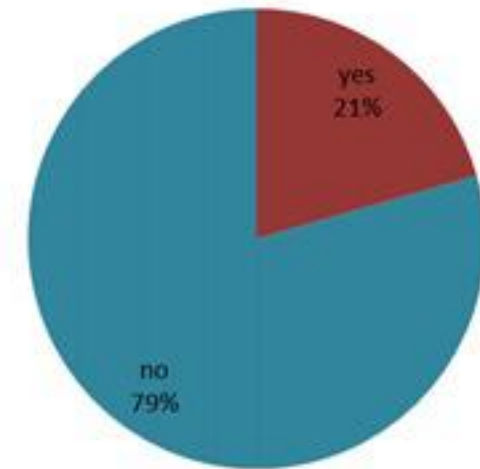
Occupied hospital beds  
(suspected and confirmed)



By date of report  
(suspected and confirmed)



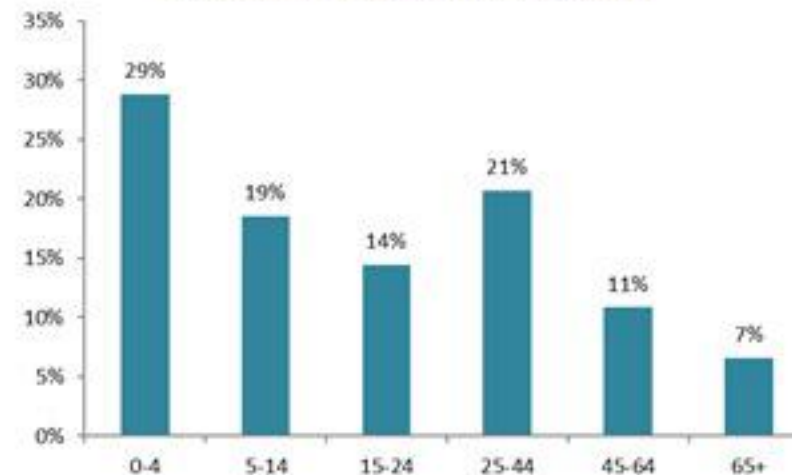
By Hospital Admission  
(suspected and confirmed)



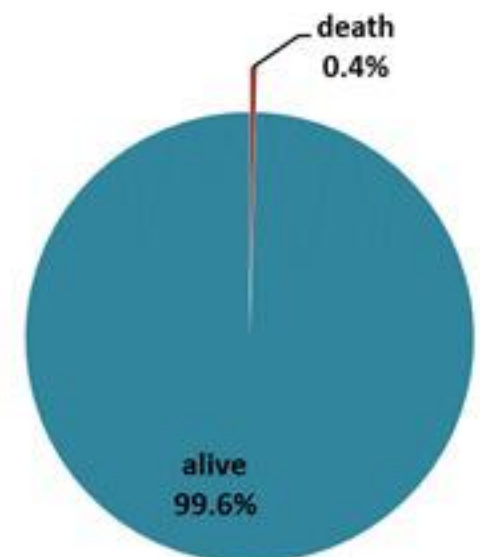
By locality  
(confirmed cases)



By age group  
(suspected and confirmed cases)



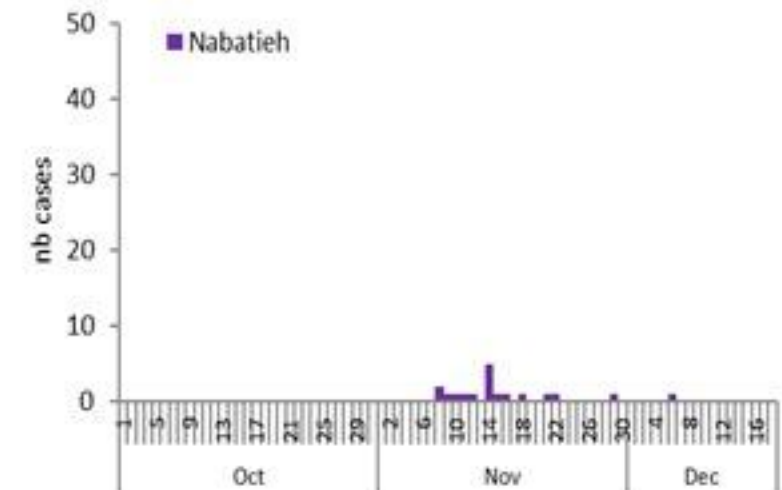
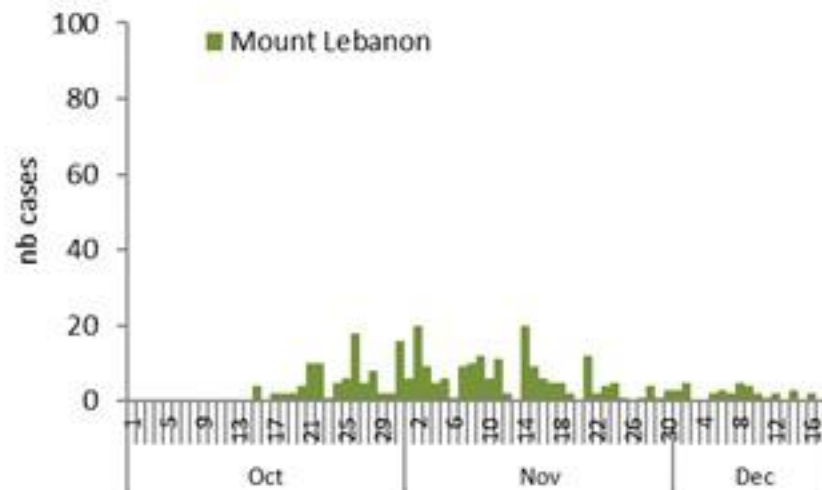
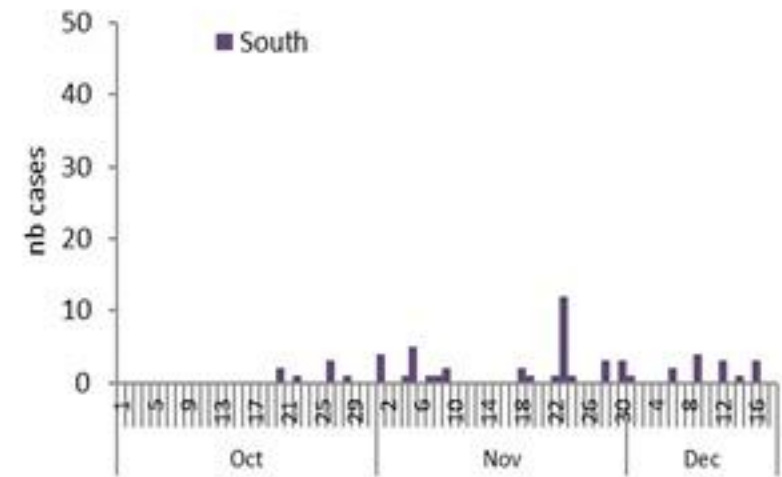
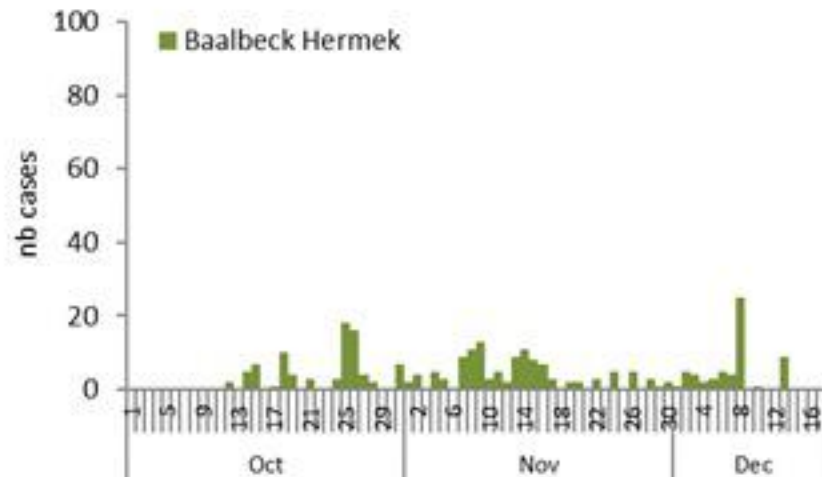
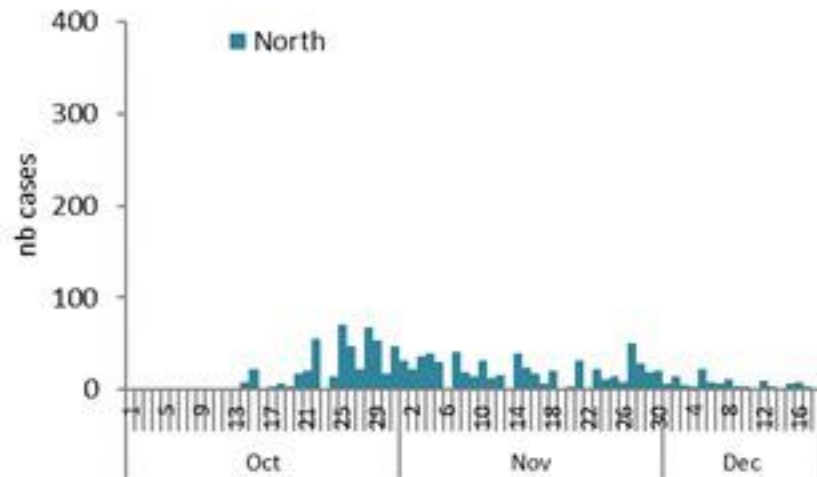
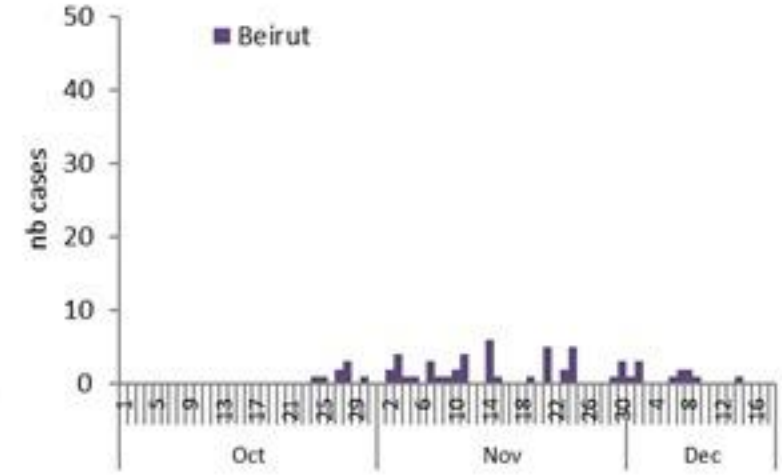
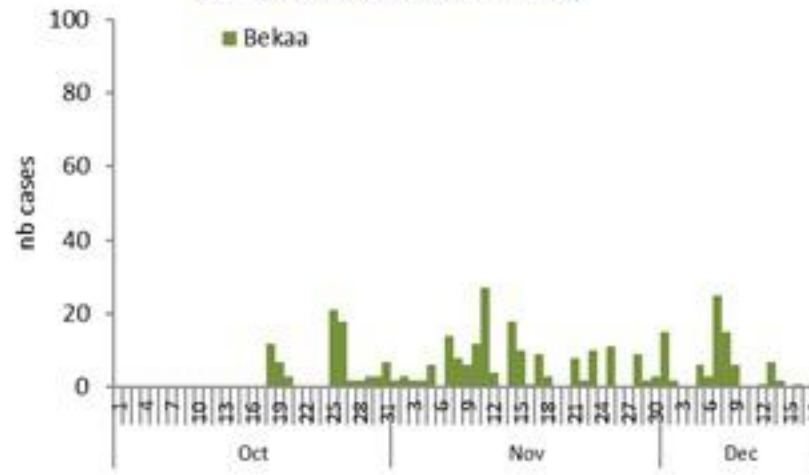
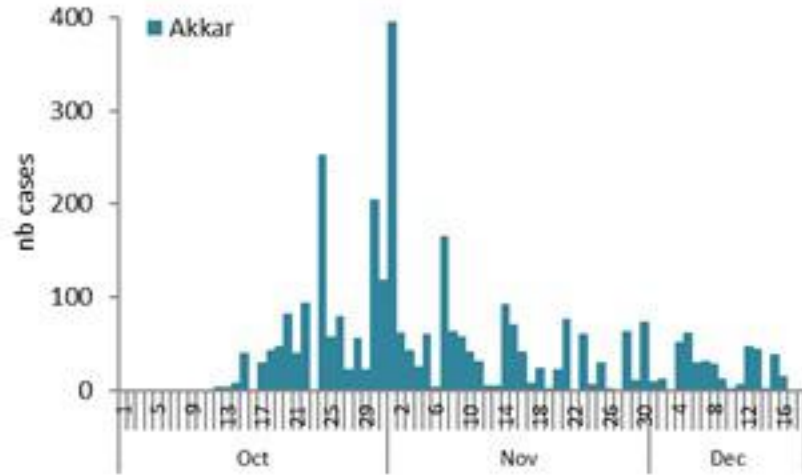
By Outcome  
(suspected and confirmed)



# Cholera Surveillance Report

## 19 Dec 2022

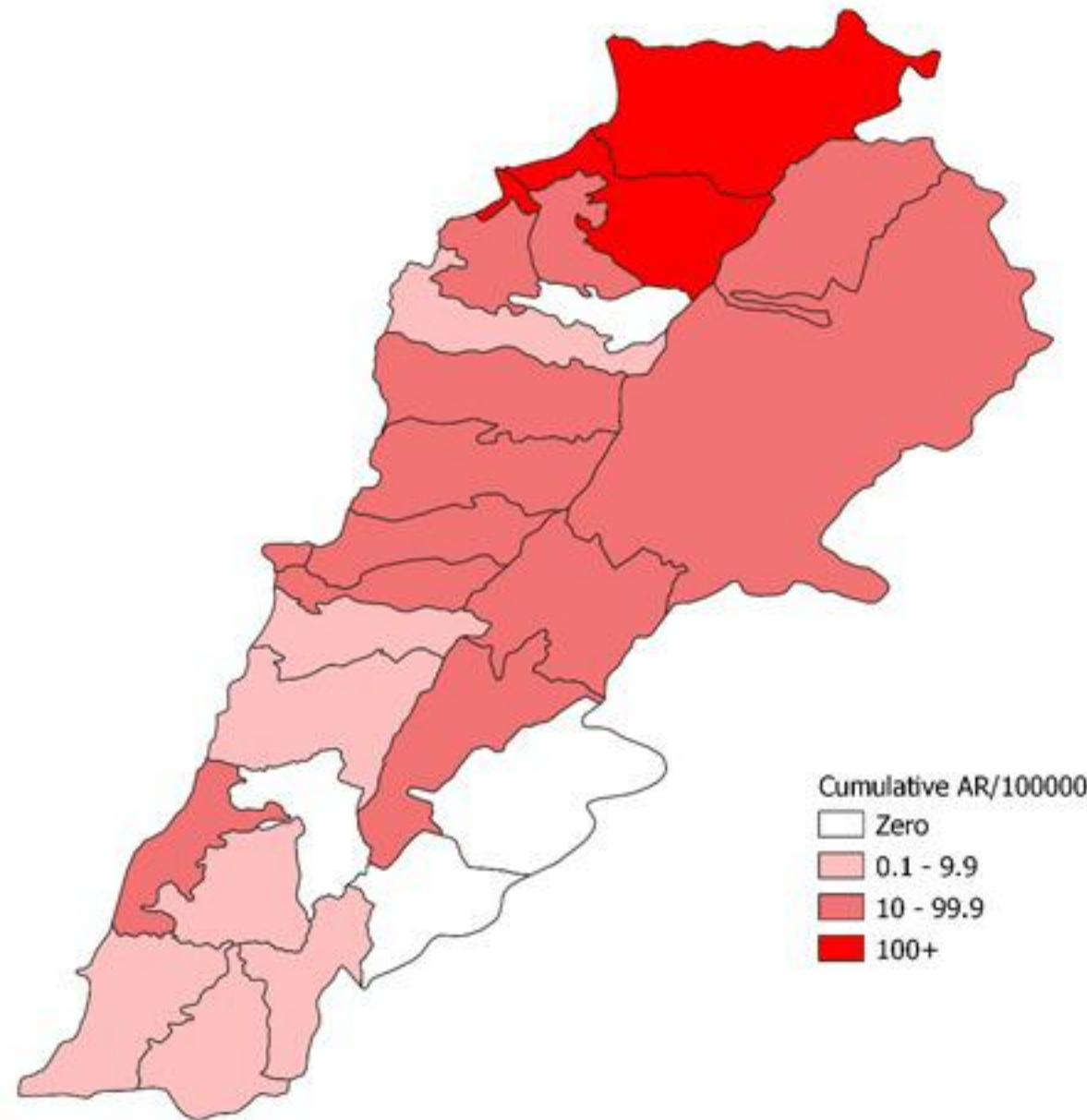
Epicurves by date of reporting by province (suspected and confirmed)



# Cholera Surveillance Update

## 19 Dec 2022

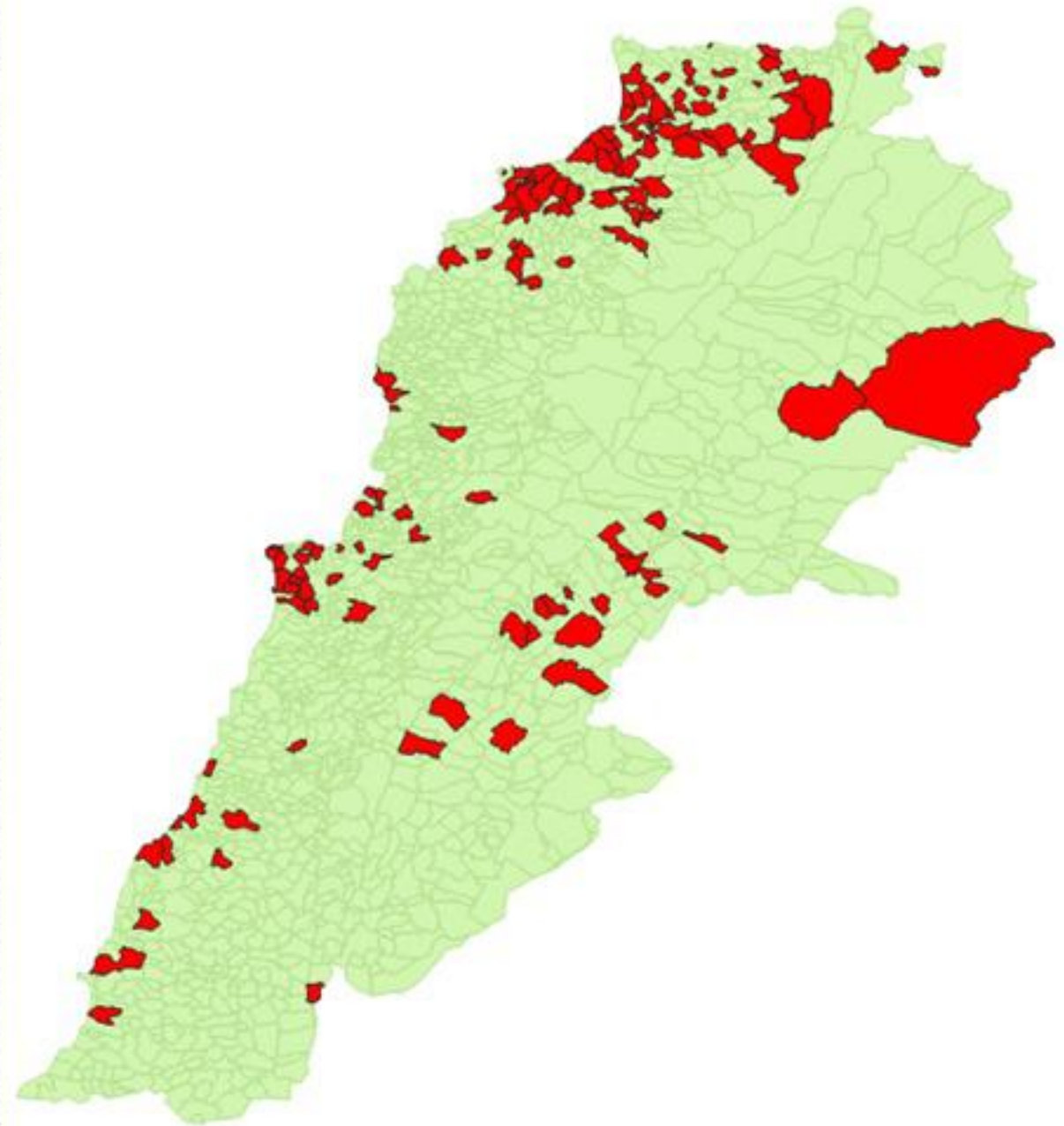
Cumulative Attack Rate per 100,000 (suspected and confirmed)  
نسبة الحدوث التراكمية لكل مئة ألف نسمة (الحالات المشتبهية والمثبتة)



# Cholera Surveillance Update

## 19 Dec 2022

By locality (confirmed)  
حسب البلدة (المتبئة)



Figures in table are subject to modification following updates and data correction

Locality	Cases	Locality	Cases
Akkar Atika		Keserwan	1
Amayer/Quadi Khaled		Aintouna	1
Arqa / Marlayet Haddara		Balfounh	1
Bebrine / Baddoua	160	Bqarouta	7
Beit Hajj/Koucha/Khreibit Jindi		Ghair	2
Berqayel		Jounieh Ghadir	4
Bezbina		Jounieh Sabra	4
Birch	2	Yahchouch	1
Bqerzla		Zouk Mosbeh	3
Cheikh Ayache / Chir Hmairine		Koura	1
Dahr Qambar /Hokr Qatfeh		Aaba	1
Dabadab		Aahdiq	1
Dinbou		Basa	1
Fneydek		Bsama	1
Halba		Dahr Ain / Ras Masqua	1
Hayssa		Rachdibbine	1
Hoculch		Kfar Aqa	1
Ideldat Qaytee		Maqzoun	1
Kfar Harra	4	Aadaysoh	1
Kfar Melki		Motr	1
Khane Hayat		Biklafa	1
Khirbet Char		Broummara	1
Kneisset Hnalder		Bsalim	1
Kouchra		Daruna/Borj Hemmoud	2
Koulikhat		Mansouriah	3
Machha	2	Zalqa	1
Majdala	2	Miniyah Danieh	1
Memneaa		Aadoua	1
Mhamarah / Nahr Bared / Abdeh	22	Assoun	4
Minlara	3	Ain El Tineh	1
Mqyatec		Bahsa	1
Ouadi Jamous	11	Bakhaoun	4
Qaabrine / Tal Hayat	7	Bhanine / Zouk Bhanine	7
Qbalyat		Bamaa	6
Qlayat Akkar		Douniya	1
Qobet Chamra	17	Kfar Chollane	2
Rahbeh		Kfar Habou	1
Ransiyeh / Deir Dalloum		Makubta	2
Saadine	4	Minieh	18
Tell Abbas Charqui	2	Qualiyeh	1
Tleil		Qatine	3
Zouq Haddara		Rihanih	35
Zouq Hosniah		Sir Daniyah	5
Aley		Saida	1
Hay Selloum/Chouifat		Rantoun	1
Baabda		Bissariyeh	3
Ain Roummaneh		Gharish	2
Borj Brajneh		Khawayeb	3
Ghbayreh/Chiyah/Sabra		Saida	1
Hadath		Sawfand	1
Haret Hreik		Sour	1
Kfar Chima		Abbasiyeh	1
Mrojjih		Deir Qanoun Ain	4
Baalbeck	27	Badawi	16
Arsal		Mina	7
Kfar Dabache	2	Qobbah	21
Khodr		Tripoli Bab Rami	1
Temnine Faouqa		Tripoli Gadias	1
Temnine Tahta		Tripoli Haddadine	1
Younine		Tripoli Nouri	1
Batroun		Tripoli Souayqa / Assan	3
Chikka		Tripoli Tabbaneh	20
Beirut		Tripoli Zeitoun	15
Achrafieh		West Beqaa	1
Ain Mraissch		Kamel Jarou	1
Hamra		Kufaya	1
Mdaouar / Mar Mikhael		Saghbine	1
Msaibeh		Zahrh	2
Chouf		Aali Nahri	2
Ibail		Bar Elias	2
Zaarouriyeh		Dalhameh	1
Amchit		Harouch Mandra	1
Ehmej		Hawch Ormana	7
Ibail		Majdal Anjar	1
Mastita		Qob Elias	9
		Raait	11
		Saadinayd	11
		Tadabaya	2
		Zahrh Madaka	2
		Zghorta	1
		Aalma	1
		Andoh	1
		Kfar Ozaqous	2
		Majdalya Zghorta	7
		Mirata / Faour	3
		Sabwal	1
		Zghorta	5