

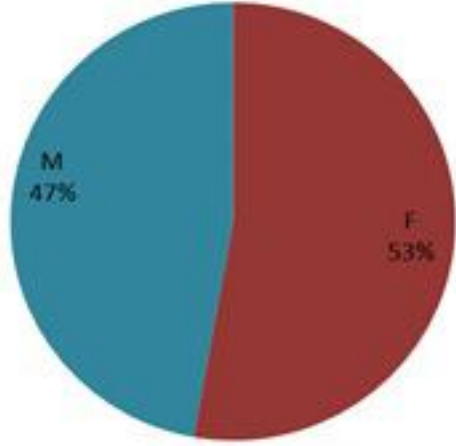
ترصد الكوليرا في لبنان 18 كانون الاول 2022

الجمهورية اللبنانية
وزارة الصحة العامة
برنامج الترصد الوبائي



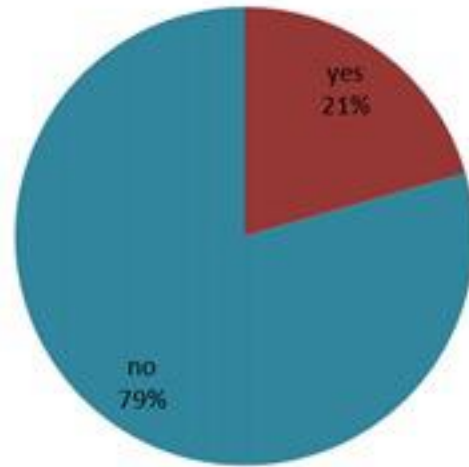
الخطوط الساخنة

1760 (الصليب الأحمر)
1787 (وزارة الصحة)



حسب الجنس
(المشبهة والمتبنة)

الوفيات (المتبنة)		الحالات المثبتة		كافة الحالات المشبهة والمتبنة	
التراكمي	الجديدة (آخر 24 ساعة)	التراكمي	الجديدة (آخر 24 ساعة)	التراكمي	الجديدة (آخر 24 ساعة)
23	0	663	0	5328	3

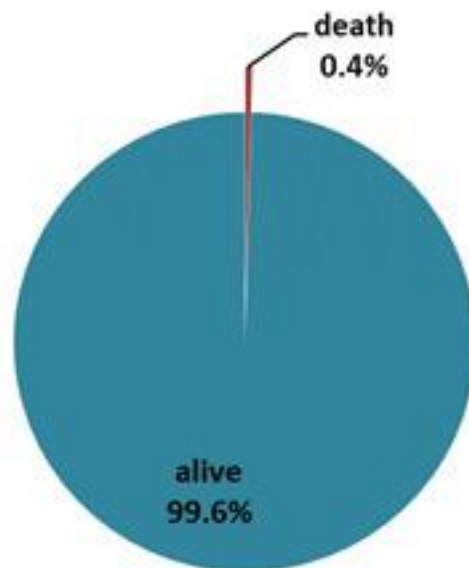


حسب الاستشفاء
(المشبهة والمتبنة)

حسب تاريخ الإبلاغ
(للحالات المثبتة والمتبنة)

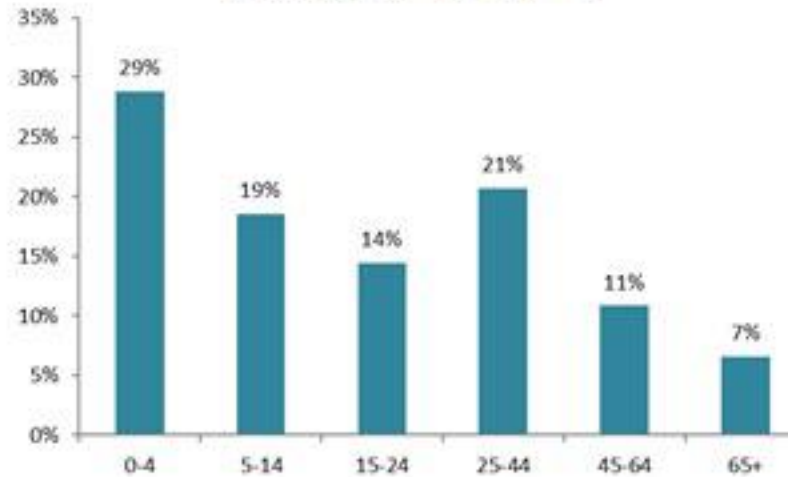


استعمال الاسره الاستشفائية
(للحالات المثبتة والمتبنة)



حسب تطور
الحالة
(المشبهة والمتبنة)

حسب الفئة العمرية
(للحالات المشبهة والمتبنة)



حسب البلدة
(للحالات المثبتة)



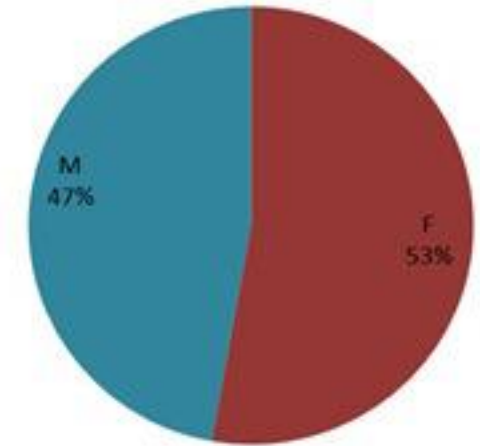
Cholera Surveillance Report

18 Dec 2022

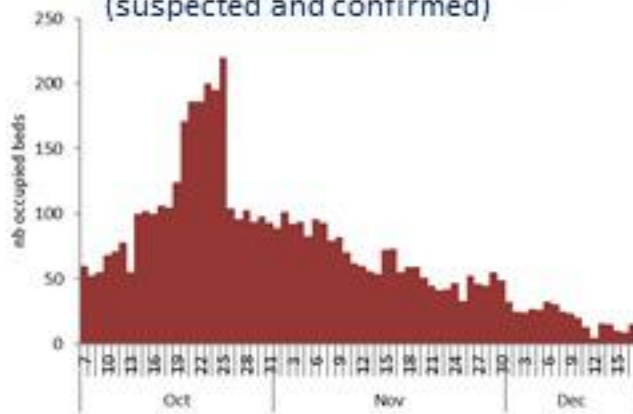
Call Centers
 1760 (Red Cross)
 1787 (MOPH)

All cases (suspected and confirmed)		Confirmed Cases		Deaths (confirmed)	
New (past 24 h)	Cumulative	New (past 24 h)	Cumulative	New	Cumulative
3	5328	0	663	0	23

By Sex
(suspected and confirmed)



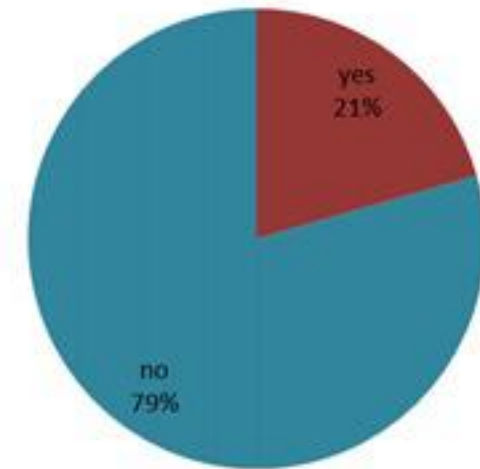
Occupied hospital beds
(suspected and confirmed)



By date of report
(suspected and confirmed)



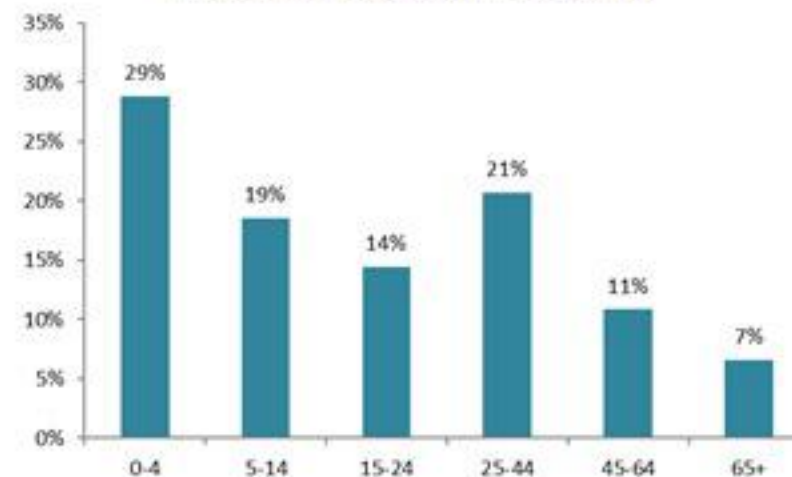
By Hospital Admission
(suspected and confirmed)



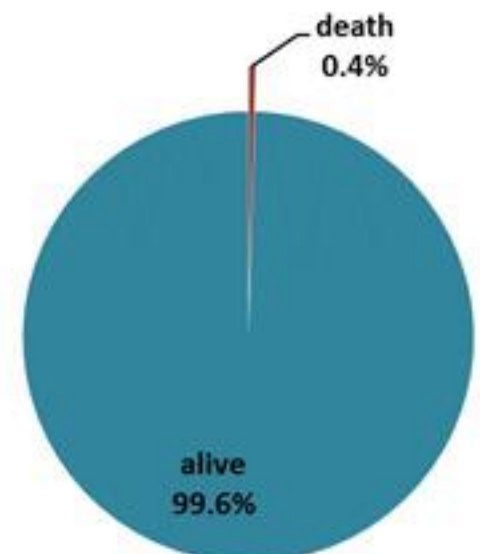
By locality (confirmed cases)



By age group
(suspected and confirmed cases)



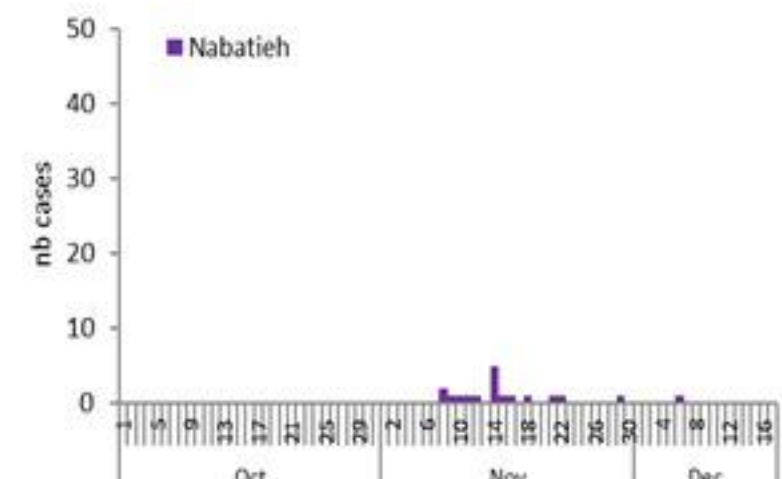
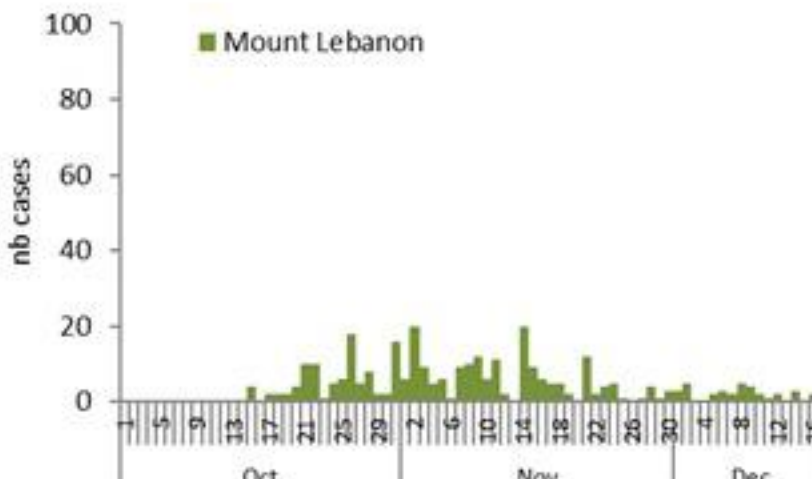
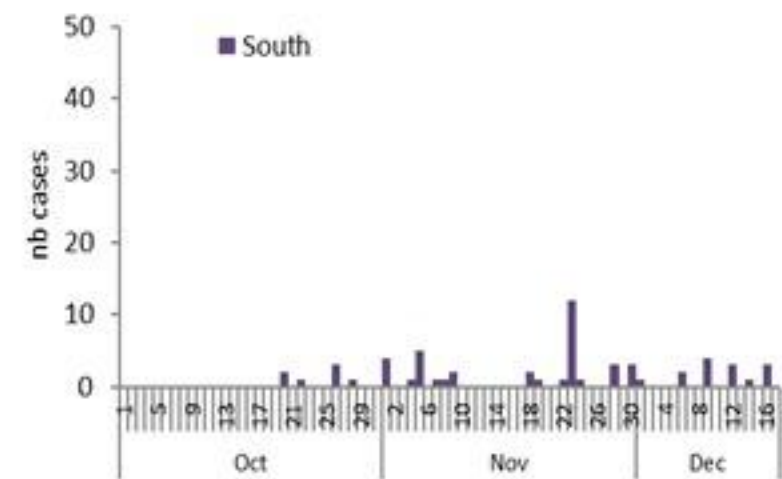
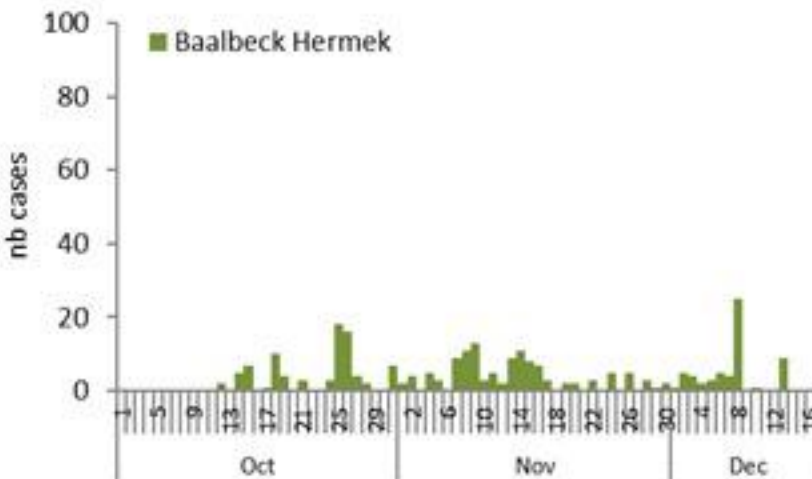
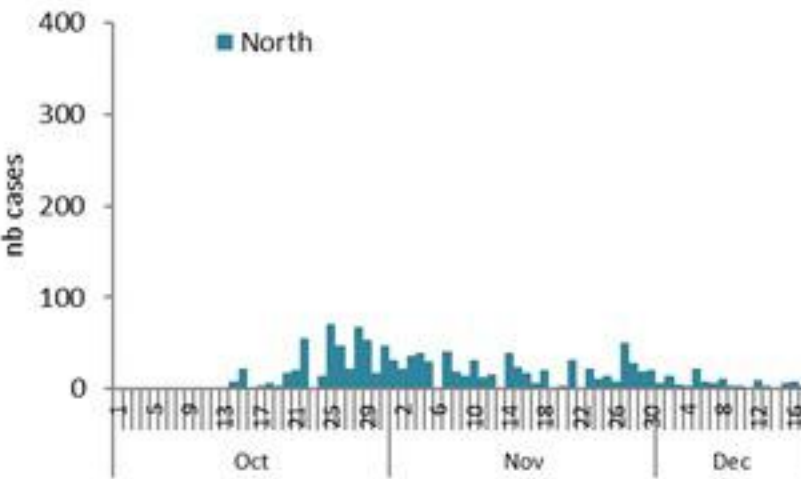
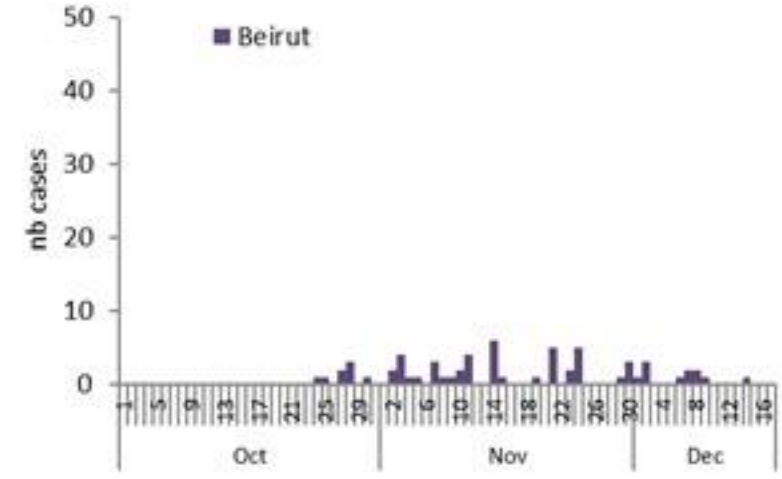
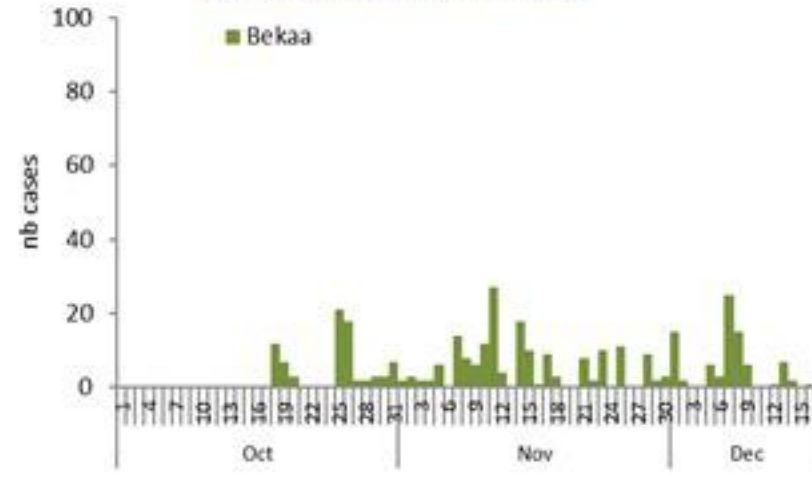
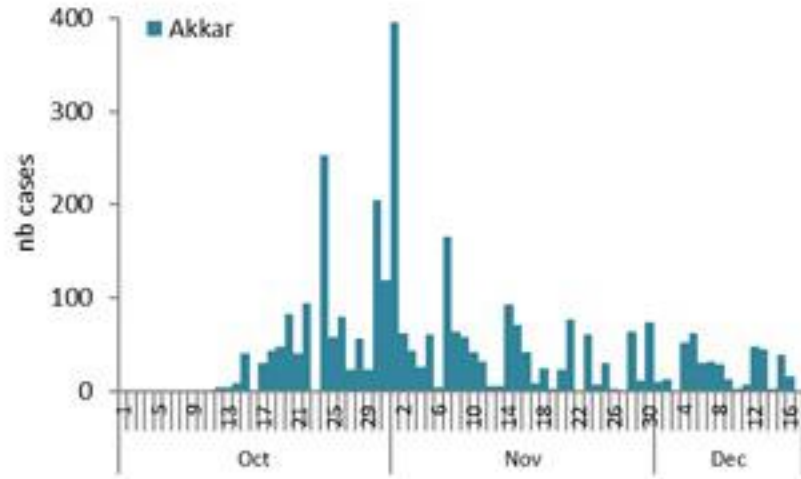
By Outcome
(suspected and confirmed)



Cholera Surveillance Report

18 Dec 2022

Epicurves by date of reporting by province (suspected and confirmed)

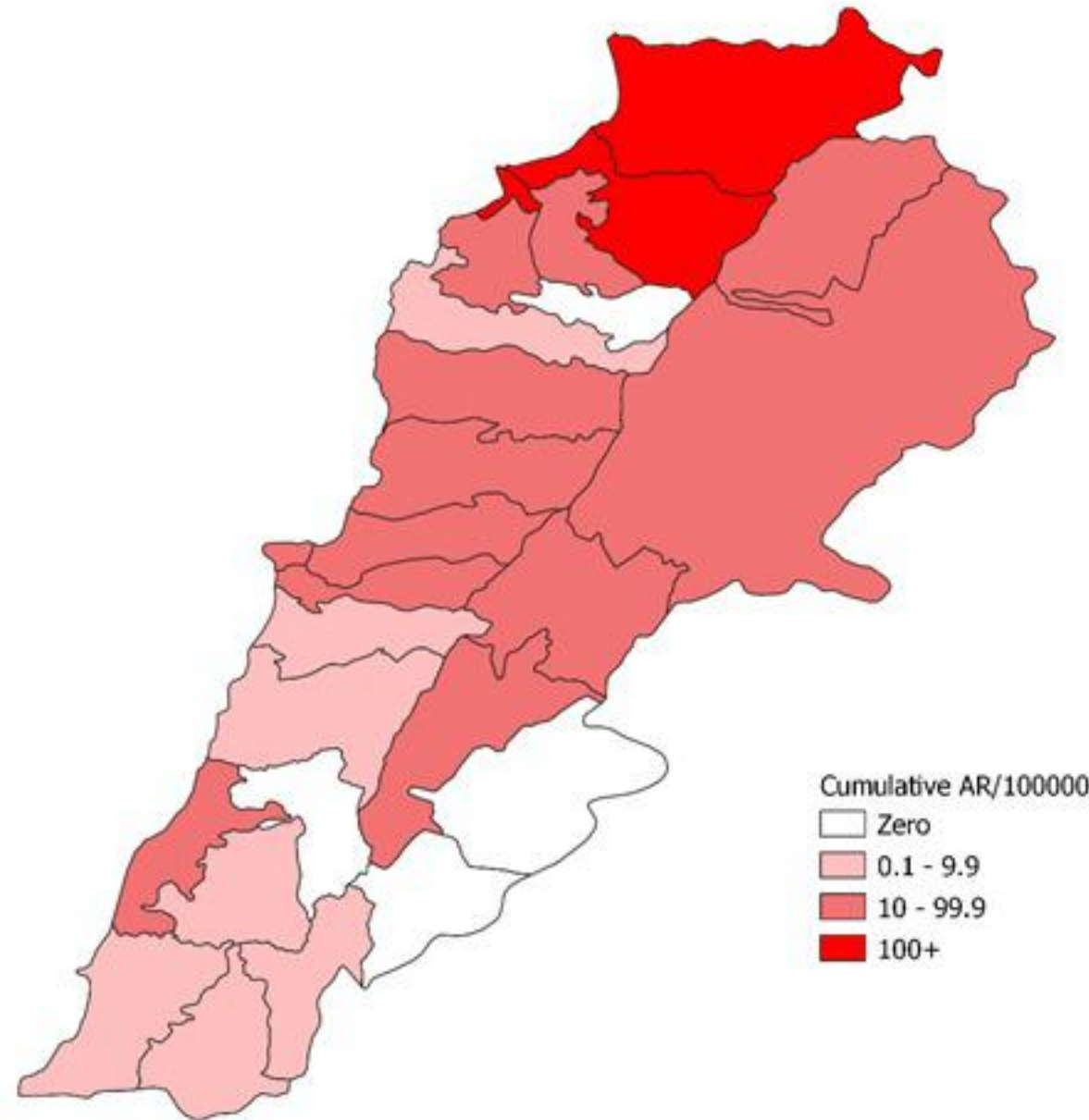


Cholera Surveillance Update

18 Dec 2022

4

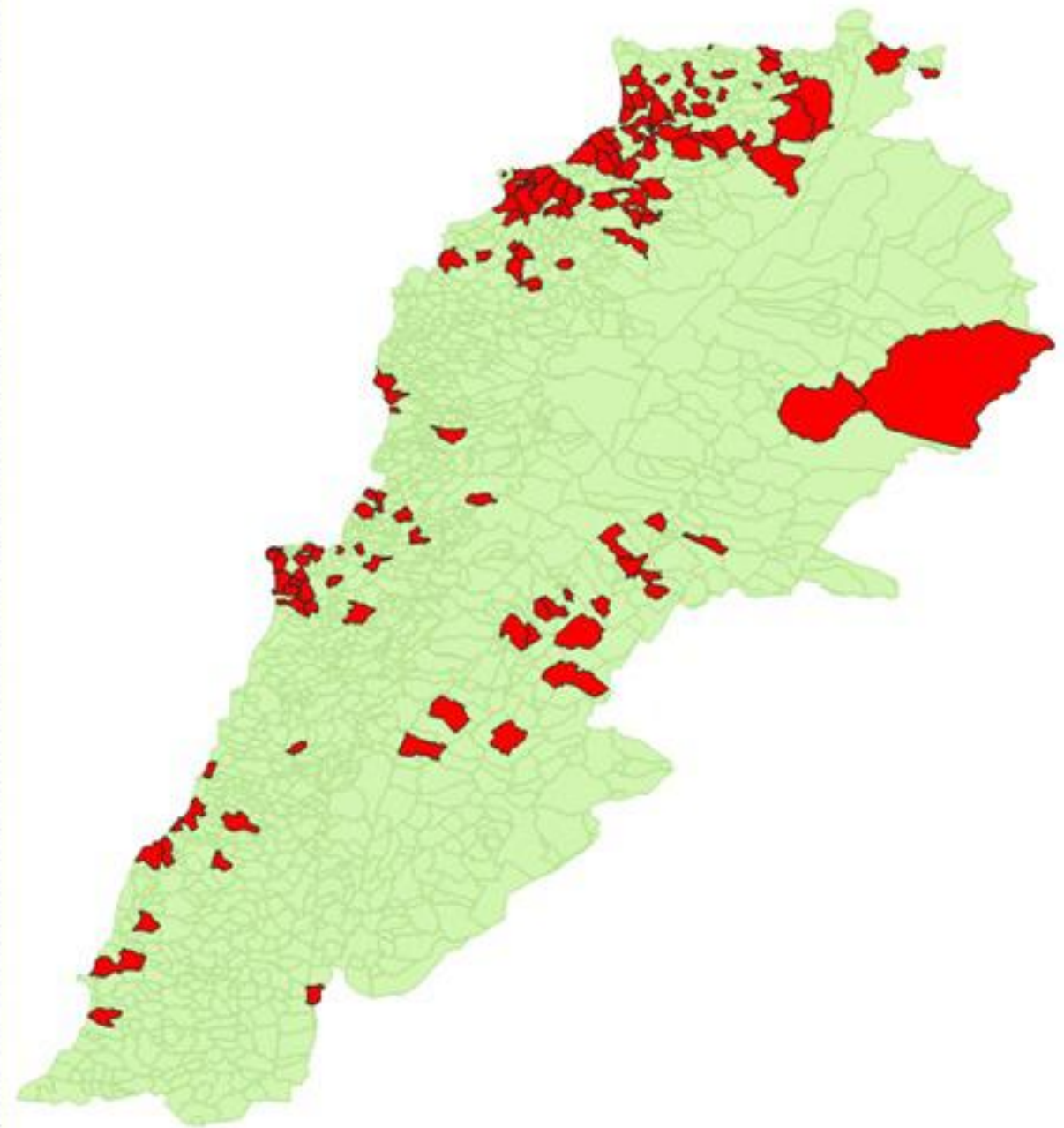
Cumulative Attack Rate per 100,000 (suspected and confirmed)
نسبة الحدوث التراكمية لكل مئة ألف نسمة (الحالات المشتبهية والمثبتة)



Cholera Surveillance Update

18 Dec 2022

By locality (confirmed)
 حسب البلدة (المتبئة)



Figures in table are subject to modification following updates and data correction

Case	Locality	Cases	Case	Locality	Cases
Akkar	Akkar Atika		Kiswan	Aintouna	1
	Amayer/Quadi Khaled			Balfounh	1
	Arqa / Marlayet Haddara			Bqarouta	7
	Bebrine / Baddoua	160		Ghair	2
	Beit Hajj/Koucha/Khreibit Jindi			Jounieh Ghadir	4
	Berqayel			Jounieh Sabra	4
	Bezbina			Yahchouch	1
	Birch	2		Zouk Mosbeh	3
	Bqerzla		Koura	Aaba	1
	Cheikh Ayache / Chir Hmairine			Aahdig	1
	Dahr Qambar /Hokr Qatfeh			Basa	1
	Dabadeb			Bsama	1
	Dinbou			Dahr Ain / Ras Masqua	1
	Fneydek			Rachdibbine	1
	Halba			Kfar Aqa	1
	Hayssa		Marjoun	Aadaysoh	1
	Hoculch		Motr	Biklafa	1
	Jdeidat Qaytee			Broummara	1
	Kfar Harra	4		Bsalim	1
	Kfar Melki			Daruna/Borj Hemmoud	2
	Khane Hayat			Mansourieh	3
	Khirbet Char			Zalqa	1
	Kneisset Hnalder		Minieh Danieh	Aadoua	1
	Kouchra			Assoun	4
	Koulikhat			Ain El Tineh	1
	Machha	2		Bahsa	1
	Majdala	2		Bakhaoun	4
	Memneaa			Bhanine / Zouk Bhanine	7
	Mhamarah / Nahr Bared / Abdeh	22		Bamaa	6
	Minlara	3		Douniya	1
	Mqyatec			Kfar Chollane	2
	Ouadi Jamous	11		Kfar Habou	1
	Qaabrine / Tal Hayat	7		Merkaba	2
	Qbalyat			Minieh	18
	Qlayat Akkar			Qualiyeh	1
	Qobet Chamra	17		Qattine	3
	Rahbeh			Rihanih	35
	Ransiyeh / Deir Dalloum			Sir Damiyah	5
	Saadine	4	Saida	Aantoun	1
	Tell Abbas Charqui	2		Bissariyeh	3
	Tleil			Gharish	2
	Zouq Haddara			Khawayb	3
	Zouq Hosniah			Saida	1
Aley	Aley			Sawfand	1
	Hay Selloum/Chouifat		Sour	Abbasiyeh	1
Baabda	Ain Roummaneh			Deir Qanoun Ain	4
	Borj Brajneh			Badawi	16
	Ghbayreh/Chiyah/Sabra			Mina	7
	Hadath			Qobbah	21
	Haret Hreik			Tripoli Bab Rami	1
	Kfar Chima			Tripoli Gadias	1
	Mrejjih			Tripoli Haddadine	1
Baalbeck	Arsal	27		Tripoli Nouri	1
	Kfar Dabache	2		Tripoli Souayqa / Assan	3
	Khodr			Tripoli Tabbaneh	20
	Temnine Faouqa			Tripoli Zeitoun	15
	Temnine Tahta		West Beqaa	Kamel Jarou	1
	Younine			Kufaya	1
Batroun	Chikka			Saghbine	1
Beirut	Achrafieh	2	Zahleh	Aali Nahri	2
	Ain Miralssch			Bar Elias	2
	Hamra			Dalhameh	1
	Mdaouar / Mar Mikhael			Harouch Mandra	1
	Msaibeh			Hawch Orman	7
Chouf	Zaarouriyeh			Majdal Anjar	1
Jbeil	Amchit			Qob Elias	9
	Ehmej			Raait	11
	Jbeil			Saadinayd	11
	Mastita			Tadabaya	2
				Zahleh Madaka	2
			Zghorta	Aalma	1
				Andoh	1
				Kfar Ozaqous	2
				Majdalya Zghorta	7
				Mirata / Faour	3
				Sabwal	1
				Zghorta	5