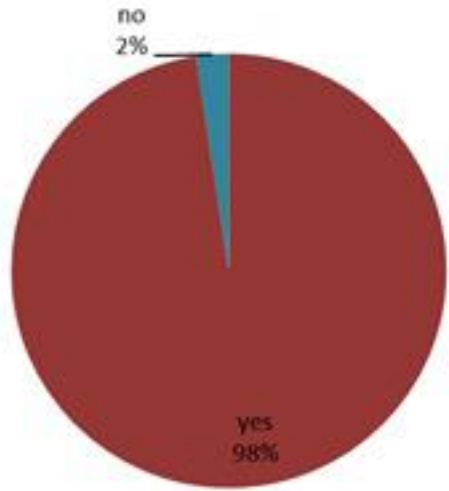


الخطوط الساخنة

1760 (الصليب الأحمر)
1787 (وزارة الصحة)

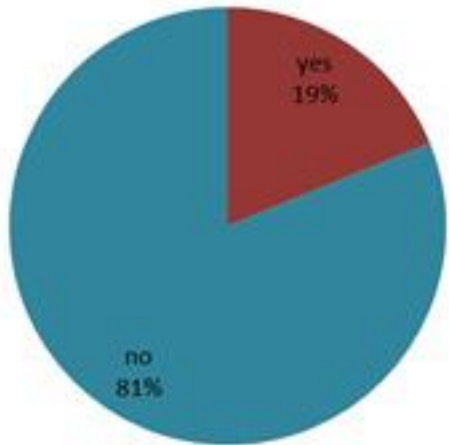
ترصد الكوليرا في لبنان 13 تشرين الثاني 2022

الجمهورية اللبنانية
وزارة الصحة العامة
برنامج الترصد الوبائي

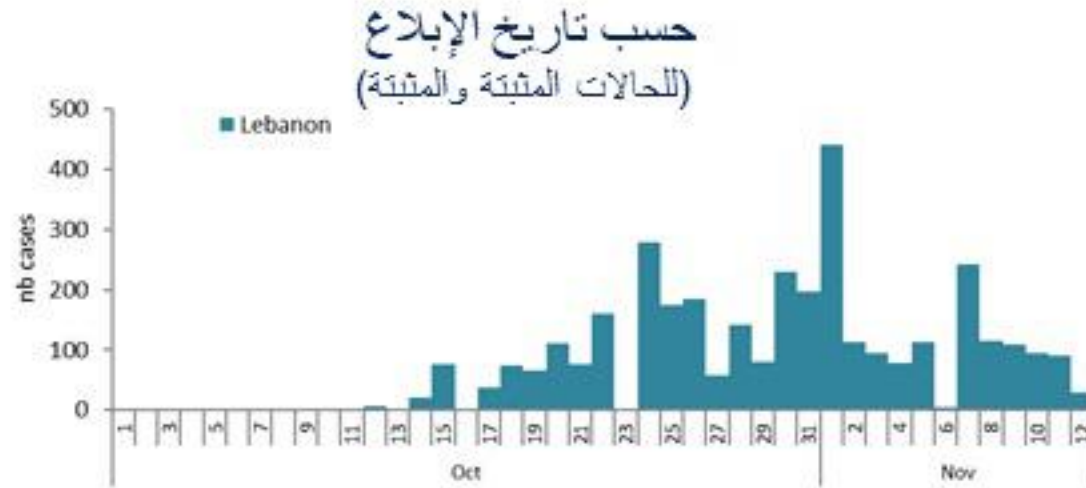


حسب ظهور
العوارض
(المشبهة والمثبتة)

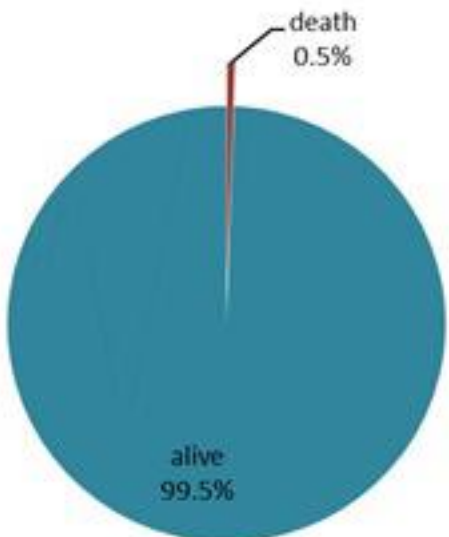
الوفيات (المثبتة)		الحالات المثبتة		كافة الحالات المثبتة والمشبّهة	
التراكمي	الجديدة (آخر 24 ساعة)	التراكمي	الجديدة (آخر 24 ساعة)	التراكمي	الجديدة (آخر 24 ساعة)
18	0	536	4	3369	29



حسب الاستشفاء
(المشبهة والمثبتة)



عدد الاسرة
المستعملة
(للحالات المشبّهة
والمثبتة)
56



حسب تطور
الحالة
(المشبهة والمثبتة)



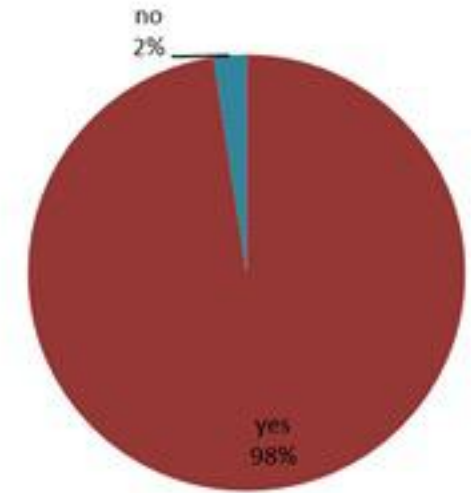
Cholera Surveillance Report

13 Nov 2022

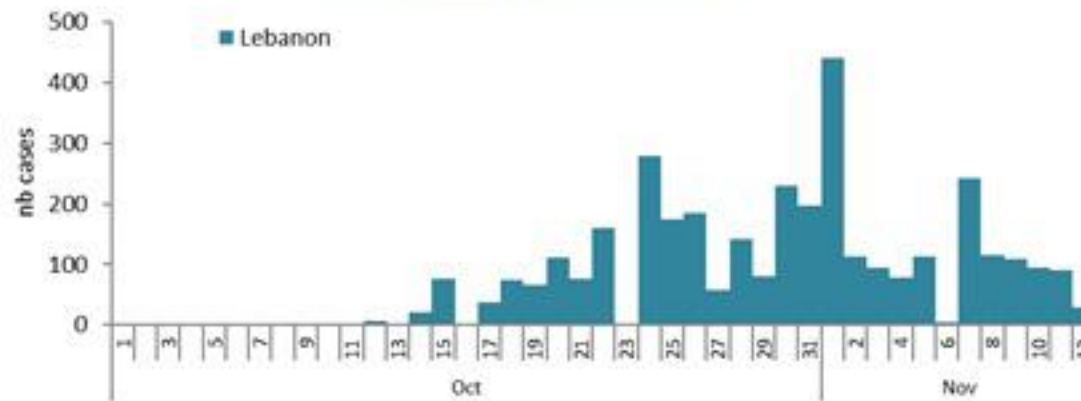
Call Centers
 1760 (Red Cross)
 1787 (MOPH)

All cases (suspected and confirmed)		Confirmed Cases		Deaths (confirmed)	
New (past 24 h)	Cumulative	New (past 24 h)	Cumulative	New	Cumulative
29	3369	4	536	0	18

By Presence of Illness
(suspected and confirmed)

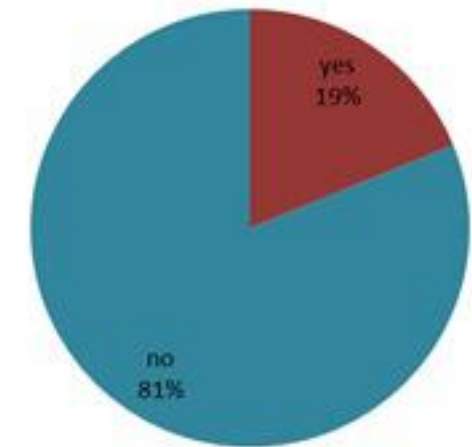


By date of report
(suspected and confirmed)



**Total occupied beds
(suspected/
confirmed)**
56

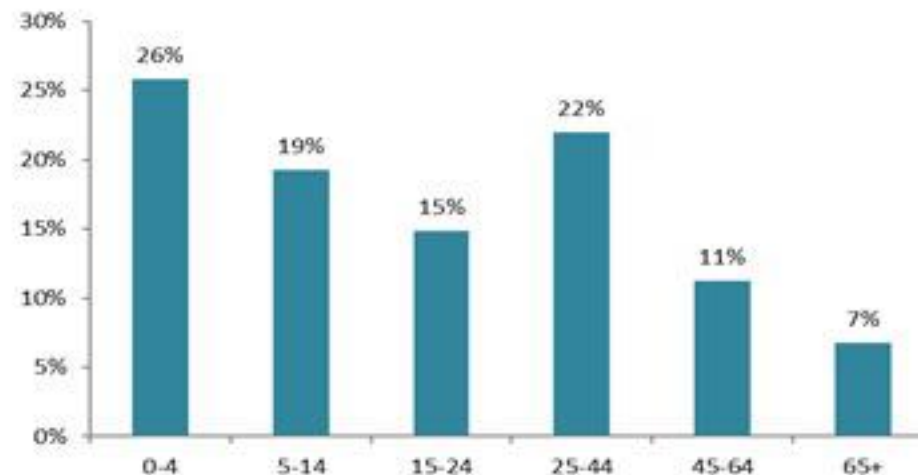
By Hospital Admission
(suspected and confirmed)



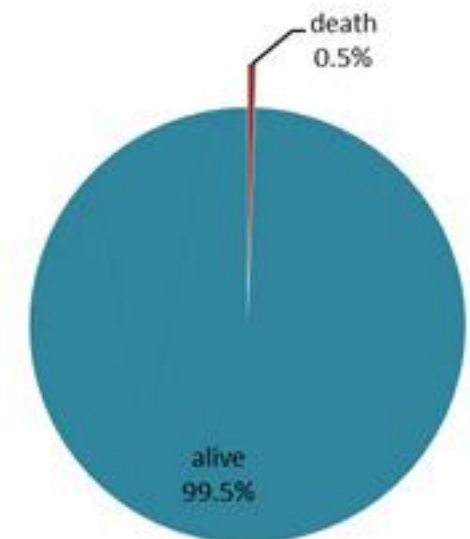
By locality (confirmed cases)



By age group
(suspected and confirmed cases)



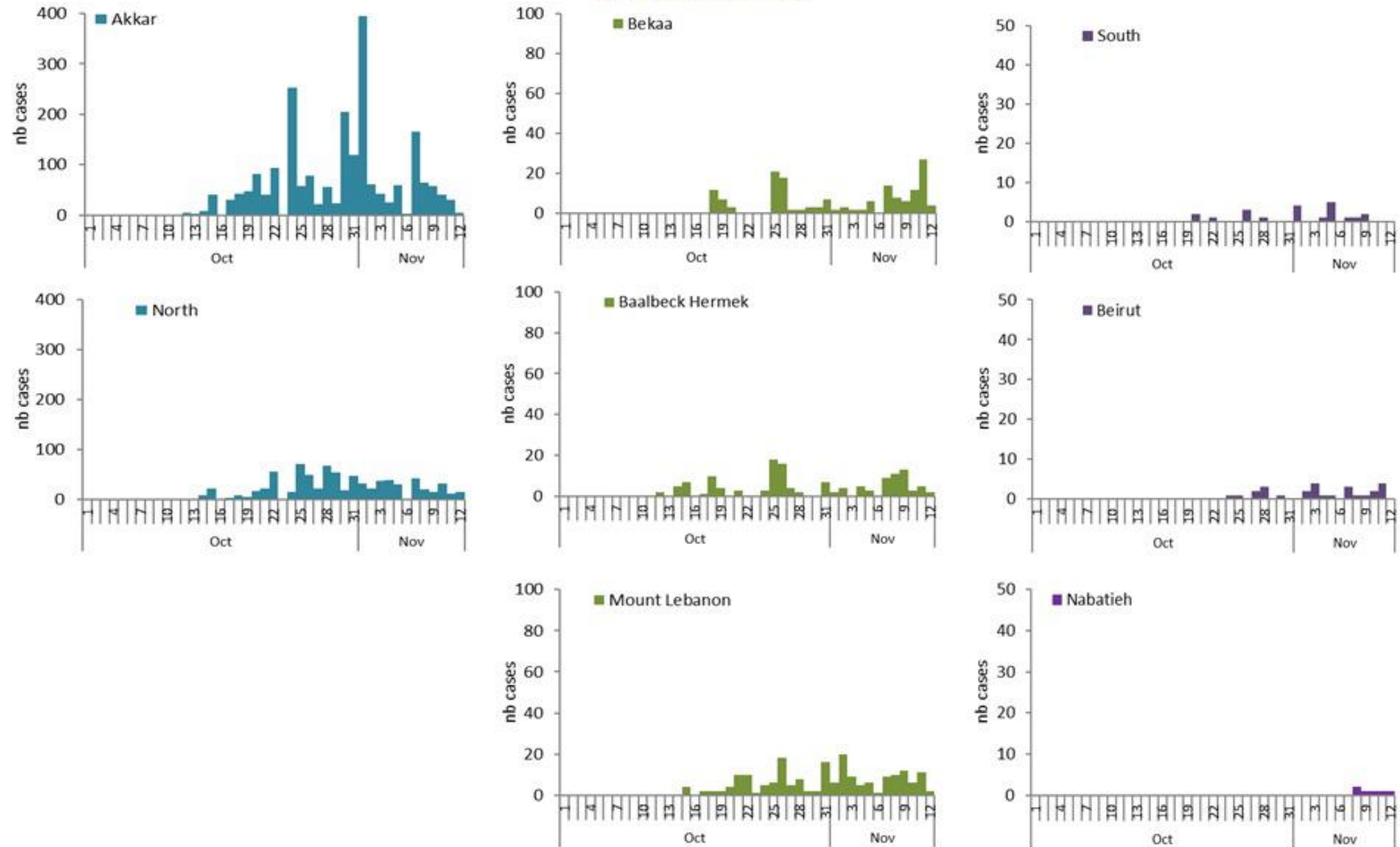
By Outcome
(suspected and confirmed)



Cholera Surveillance Report

13 Nov 2022

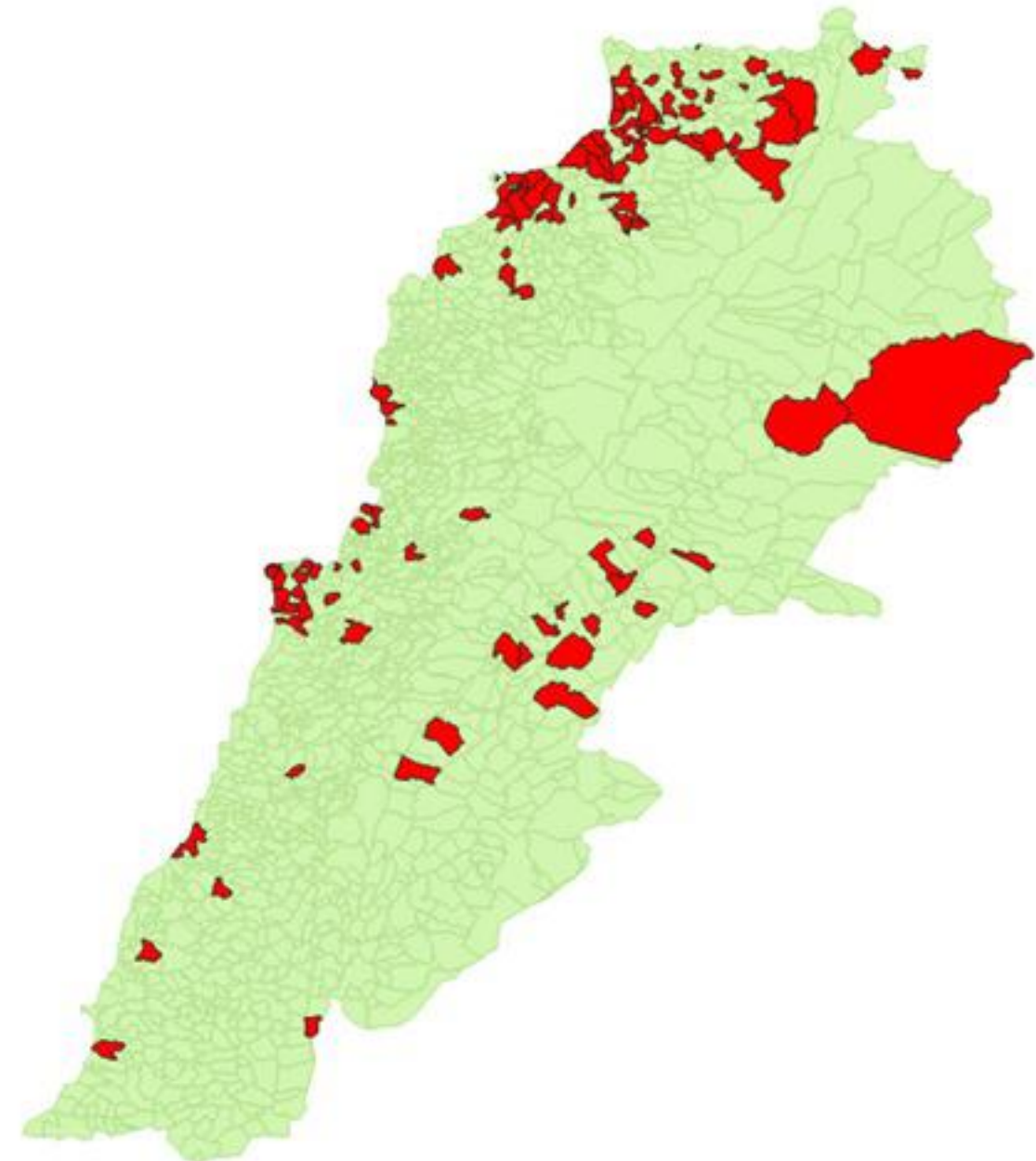
Epicurves by date of reporting by province (suspected and confirmed)



Cholera Surveillance Update

13 Nov 2022

By locality (confirmed)
حسب البلدة (المتبنة)



Figures in table are subject to modification following updates and data correction

Caza	Locality	cases	Caza	Locality	cases
Akkar	Akkar Atika	1	Jbeil	Amchit	1
	Amayer/Ouadi Khaled	1		Ehmej	1
	Arqa / Marlayet Haddara	2		Jbeil	1
	Bebnine / Baddoua	136		Mastita	2
	Beit Hajj/Koucha/Khreibit Jindi	3	Kesrwan	Aintoura	1
	Berqayel	4		Bqaatouta	7
	Bezrina	1		Ghazir	2
	Bireh	2		Jounieh Ghadir	4
	Bqerzla	1		Jounieh Sarba	4
	Cheikh Ayache / Chir Hmainine	3		Zouk Mosbeh	3
	Dahr Qambar /Hokr Qatteh	2	Koura	Aaba	1
	Fneydek	1		Barsa	1
	Halba	1		Dahr Ain / Ras Masqua	1
	Hayssa	1		Rechdibbine	1
	Hoeuich	3		Kfar Aqa	1
	Jdeidat Qaytee	3	Marjeoun	Aadayseh	1
	Kfar Harra	4	Metn	Bikfaya	1
	Kfar Melki	1		Bsalim	1
	Khirbet Char	2		Daoura/Borj Hammoud	2
	Kneisset Hnaider	1		Mansourieh	2
	Kouachra	1		Zalqa	1
	Koueikhat	2	Minieh Danieh	Aadoua	1
	Machha	2		Assoun	5
	Majdala	2		Bahsa	1
	Memneaa	1		Bakhaaoun	4
	Mhamarah / Nahr Bared / Abdeh	11		Bhanine / Zouk Bhanine	6
	Miniara	3		Kfar Chellane	2
	Mqyatea	1		Merkehta	2
	Ouadi Jamous	7		Minieh	15
	Qaabrine / Tal Hayat	7		Ouatiyeh	1
	Qbaiyat	1		Qattine	2
	Qlayat Akkar	2		Rihanieh	33
	Qobet Chamra	14		Sir Dannieh	2
	Rahbeh	1	Nabatieh	Zafta	1
	Ransiyeh / Deir Dalloom	1	Saida	Ghazieh	2
	Saafine	4		Kharayeb	3
	Tell Abbas Charqui	2	Sour	Deir Qanoun Ain	4
	Tleil	1		Baddawi	11
	Zouq Haddara	1		Mina	4
	Zouq Hosnieh	3		Qobbah	17
Aley	Aley	1	Tripoli	Tripoli Gardens	1
	Hay Selloum/Choueifat	1		Tripoli Haddadine	1
Baabda	Borj Brajneeh	3		Tripoli Nouri	1
	Ghbayreh/Chiyah	1		Tripoli Souayqa / Jisrain	3
	Hadath	2		Tripoli Tabbaneh	17
Baalbeck	Arsal	27		Tripoli Zeitoun	3
	Kfar Dabache	2	West Beqaa	Kefraya	1
	Khodr	2		Saghbine	1
	Temnine Faouqa	1	Zahleh	Bar Elias	2
	Temnine Tahta	9		Dalharnieh	1
	Younine	1		Haouch Mandra	1
Batroun	Chikka	1		Hawch Omara	7
Beirut	Achrafieh	2		Majdal Anjar	1
	Ain Mraisseh	1		Qob Elias	9
	Hamra	1		Rasit	8
	Mdaouar / Mar Mikhael	1		Saadnayel	11
	Msaitbeh	1		Zahleh Maalaka	2
Chouf	Zaarouriyeh	1	Zghorta	Aalma	1
				Kfar Dlaqous	1
				Mejdalya Zghorta	6
				Miriata	2
				Zghorta	3