

Influenza and COVID-19 Like Illness Sentinel Surveillance - Outpatients

Fig 1: Weekly number samples and COVID-19 positivity %

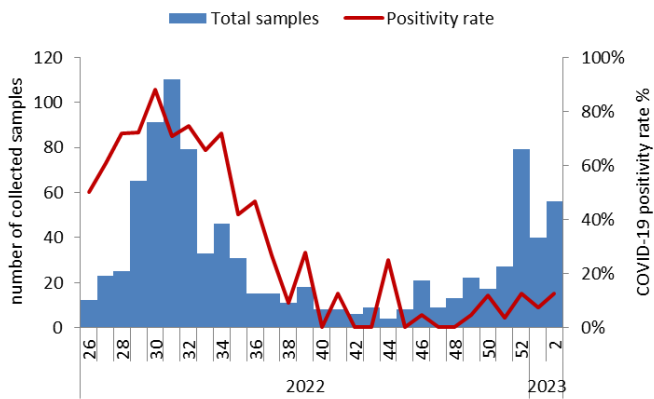
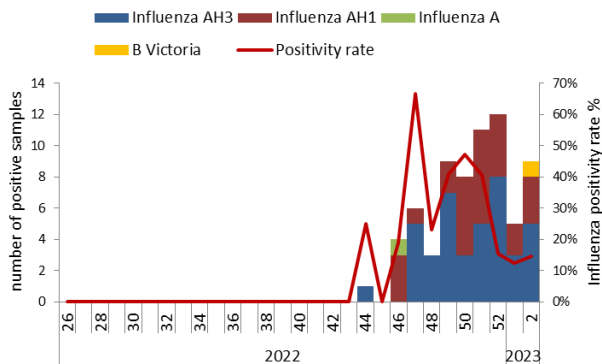


Fig 2: Weekly number of positive Influenza and positivity %



The sentinel surveillance system for outpatients relies on selected primary health centers, hospital ER, and UNRWA clinics.

In each site, cases are enrolled 1 day per week. Target cases are those fitting the case definition of Influenza-Like Illness (ILI) or the COVID-19 Like Illness (CLI). Samples are referred to the National Influenza Center (NIC), and tested for both SARS-CoV2 and Influenza via the RT-PCR.

For the past 4 weeks, 11 sites were active. 202 samples were collected. Among tested, 21 were positive for COVID-19 (10% positivity rate), and 37 for Influenza (18% positivity rate).

The Influenza season 2022/2023, is characterized by the co-circulation of AH3 and AH1, in addition to occurrence of B Victoria.

Severe Acute Respiratory Infection Sentinel Surveillance - Inpatients

Fig 3: Weekly number of samples and COVID-19 positivity %

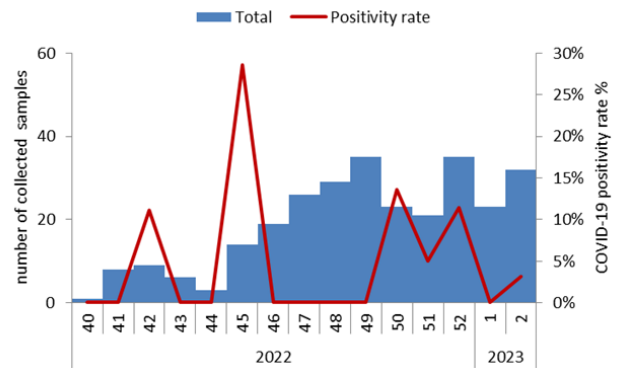
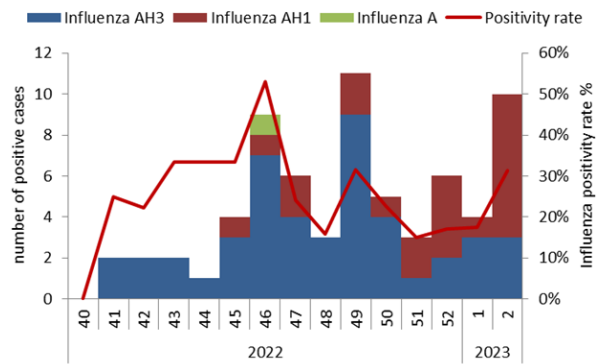


Fig 4: Weekly number of positive Influenza and positivity %



The sentinel surveillance system for inpatients relies on selected hospitals from both public and private sectors (nb=6).

In each site, cases are enrolled if respecting the case definition of Severe Acute Respiratory Infection (SARI). Samples are referred to the National Influenza Center (NIC), and tested for both SARS-CoV2 and Influenza via the RT-PCR.

For the past 4 weeks, 111 samples were collected. Among testing, 6 were positive for COVID-19 (5% positivity rate) and for 23 Influenza (21% positivity rate).

The Influenza season 2022/2023, is characterized by predominance of AH3, in addition to presence of AH1.

