

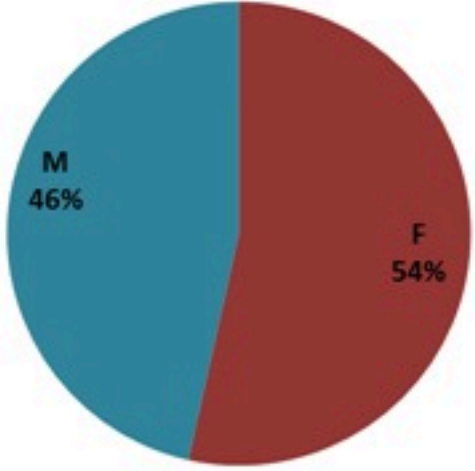
ترصد الكوليرا في لبنان 9 شباط 2023

الجمهورية اللبنانية
وزارة الصحة العامة
برنامج الترصد الوبائي



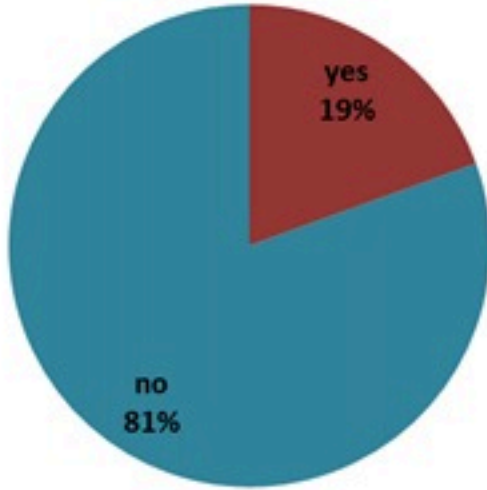
الخطوط الساخنة

1760 (الصليب الأحمر)
1787 (وزارة الصحة)

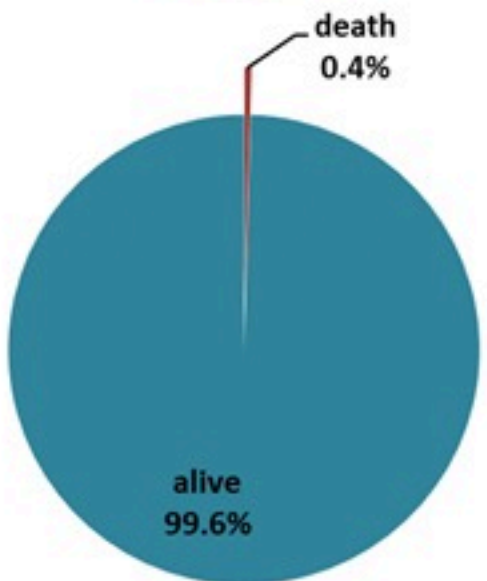


حسب الجنس
(المشبهة والمتبنة)

| الوفيات (المتبنة) | | الحالات المثبتة | | كافة الحالات المشبهة والمتبنة | |
|----------------------|--------------------------|-----------------|--------------------------|----------------------------------|--------------------------|
| التراكمي | الجديدة (آخر 24 ساعة) | التراكمي | الجديدة (آخر 24 ساعة) | التراكمي | الجديدة (آخر 24 ساعة) |
| 23 | 0 | 671 | 0 | 6412 | 1 |



حسب الاستشفاء
(المشبهة والمتبنة)



حسب تطور
الحالة
(المشبهة والمتبنة)



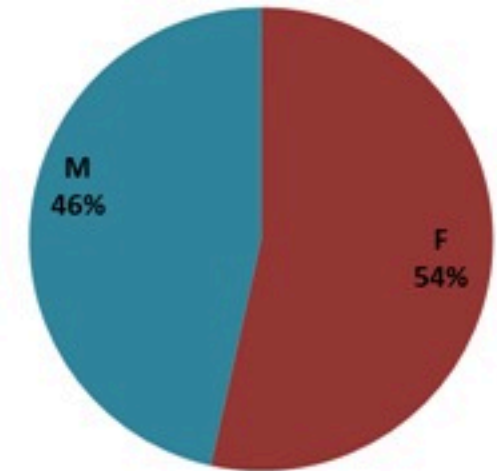
Cholera Surveillance Report

9 Feb 2023

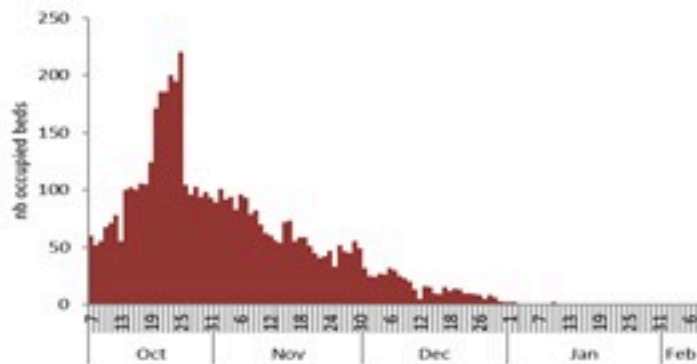
Call Centers
 1760 (Red Cross)
 1787 (MOPH)

| All cases (suspected and confirmed) | | Confirmed Cases | | Deaths (confirmed) | |
|--|-------------|--------------------|------------|-----------------------|------------|
| New (past 24 h) | Cumulative | New (past 24 h) | Cumulative | New | Cumulative |
| 1 | 6412 | 0 | 671 | 0 | 23 |

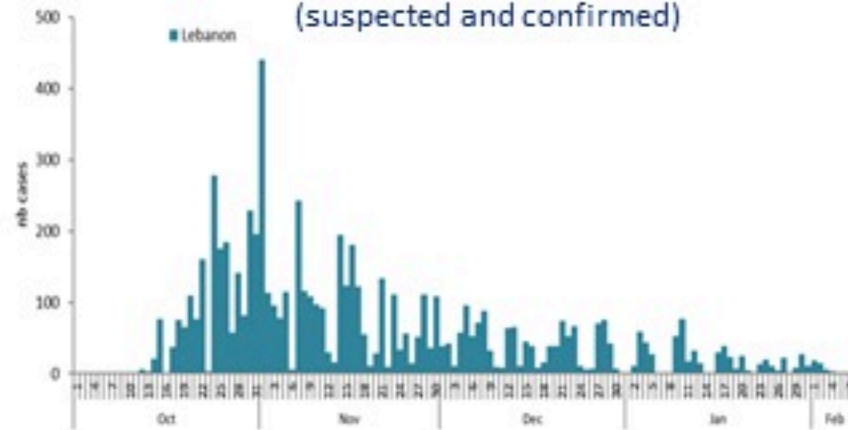
By Sex
(suspected and confirmed)



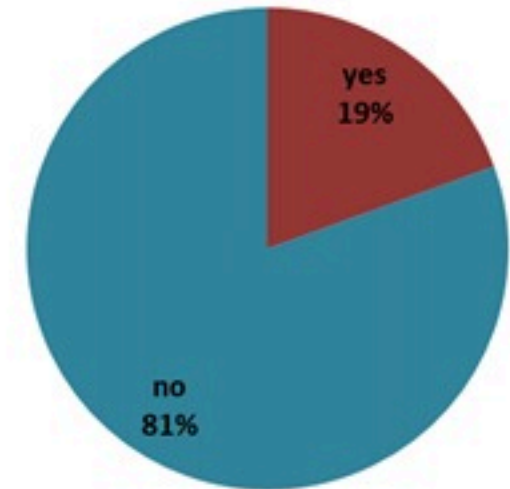
Occupied hospital beds
(suspected and confirmed)



By date of report
(suspected and confirmed)



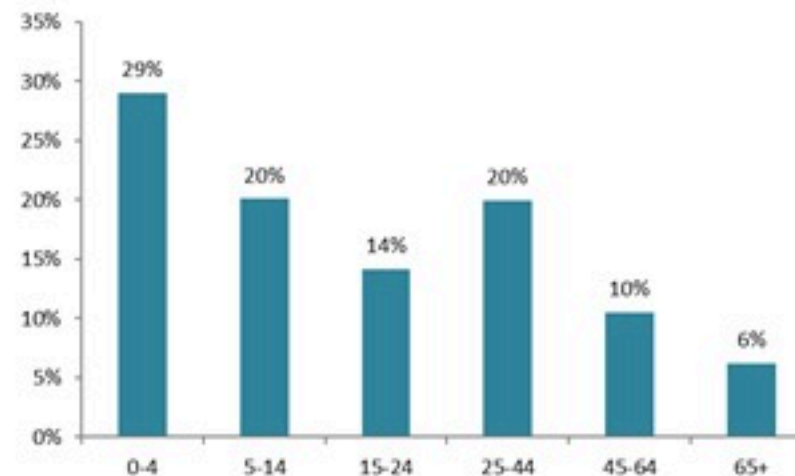
By Hospital Admission
(suspected and confirmed)



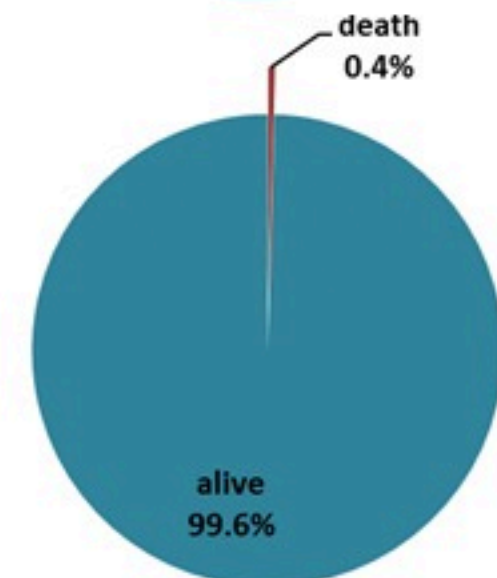
By locality (confirmed cases)



By age group
(suspected and confirmed cases)



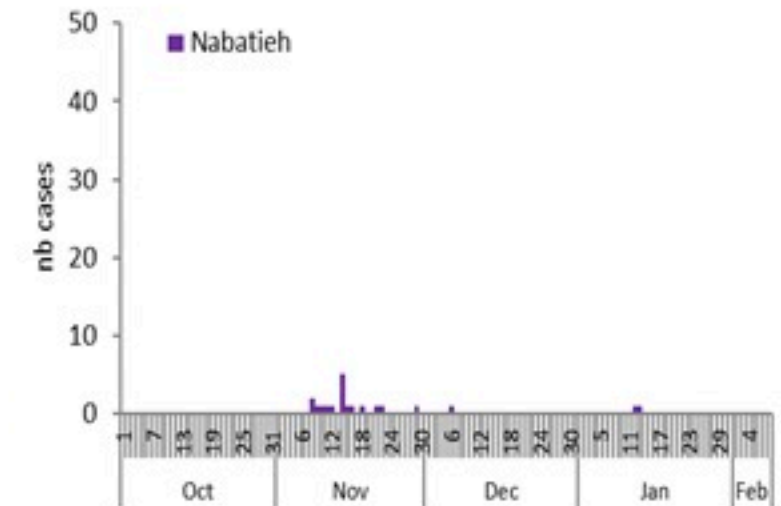
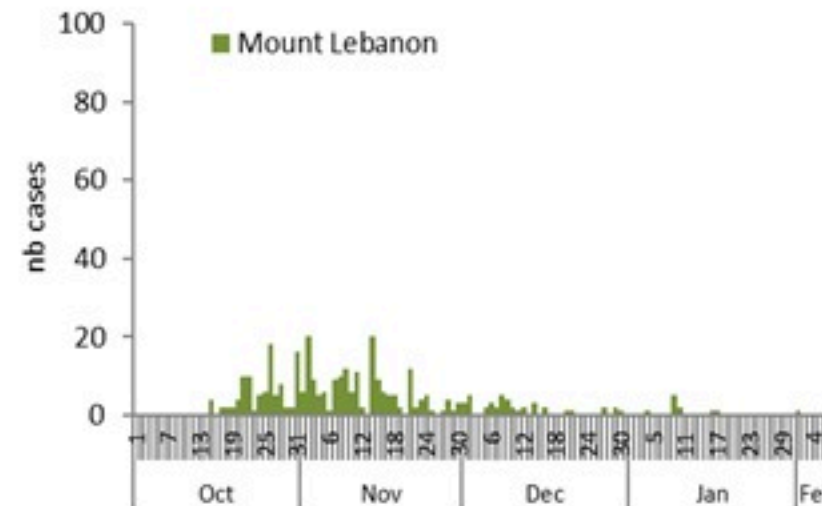
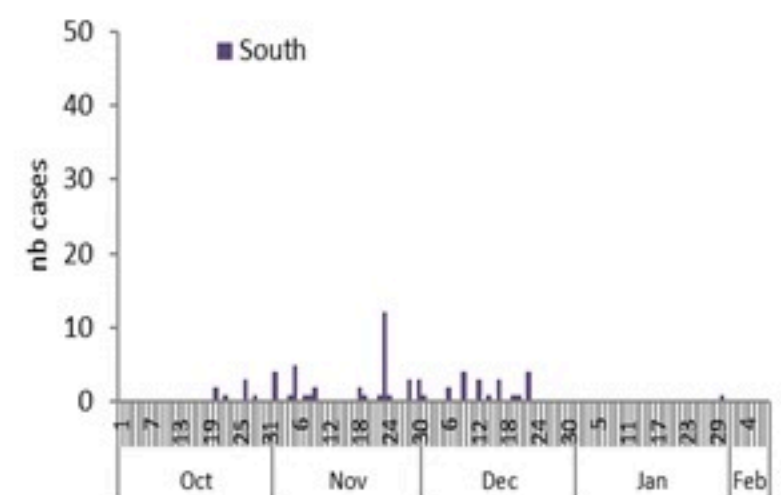
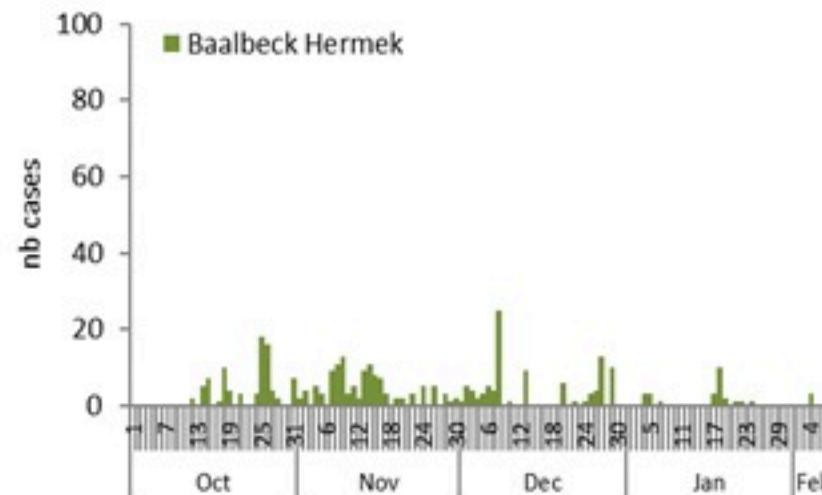
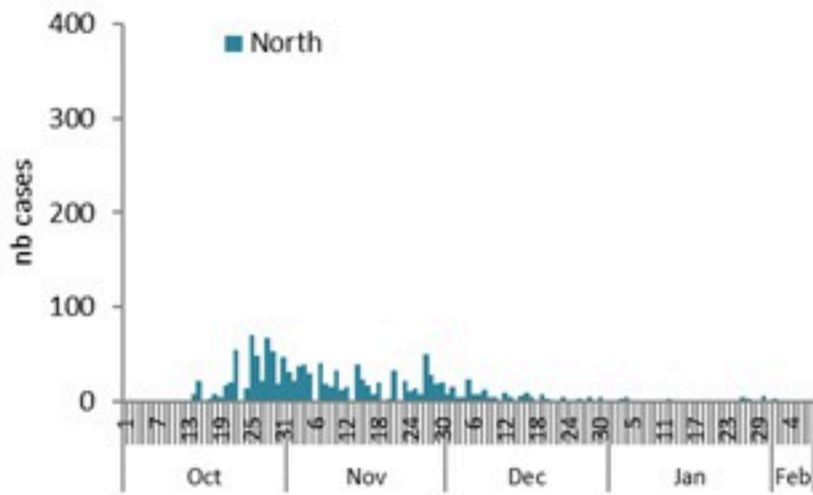
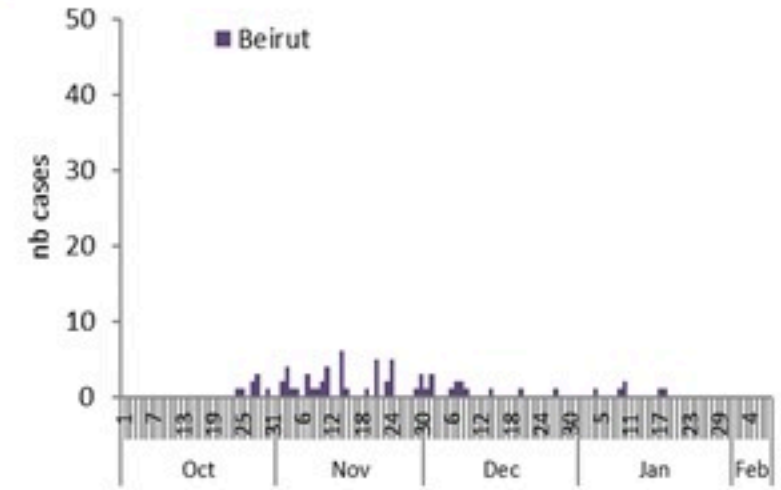
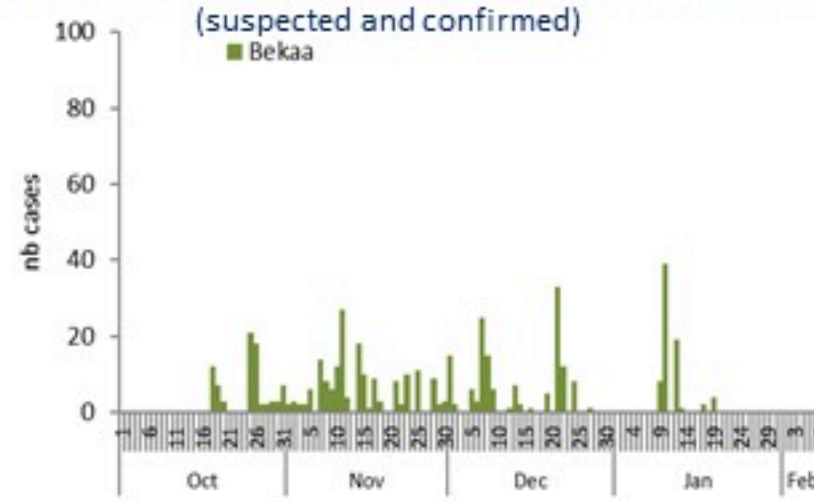
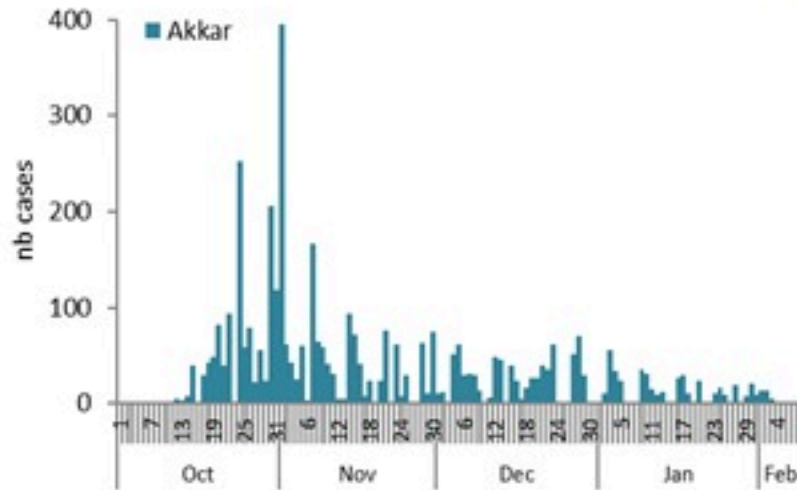
By Outcome
(suspected and confirmed)



Cholera Surveillance Report

9 Feb 2023

Enicurves by date of reporting by province



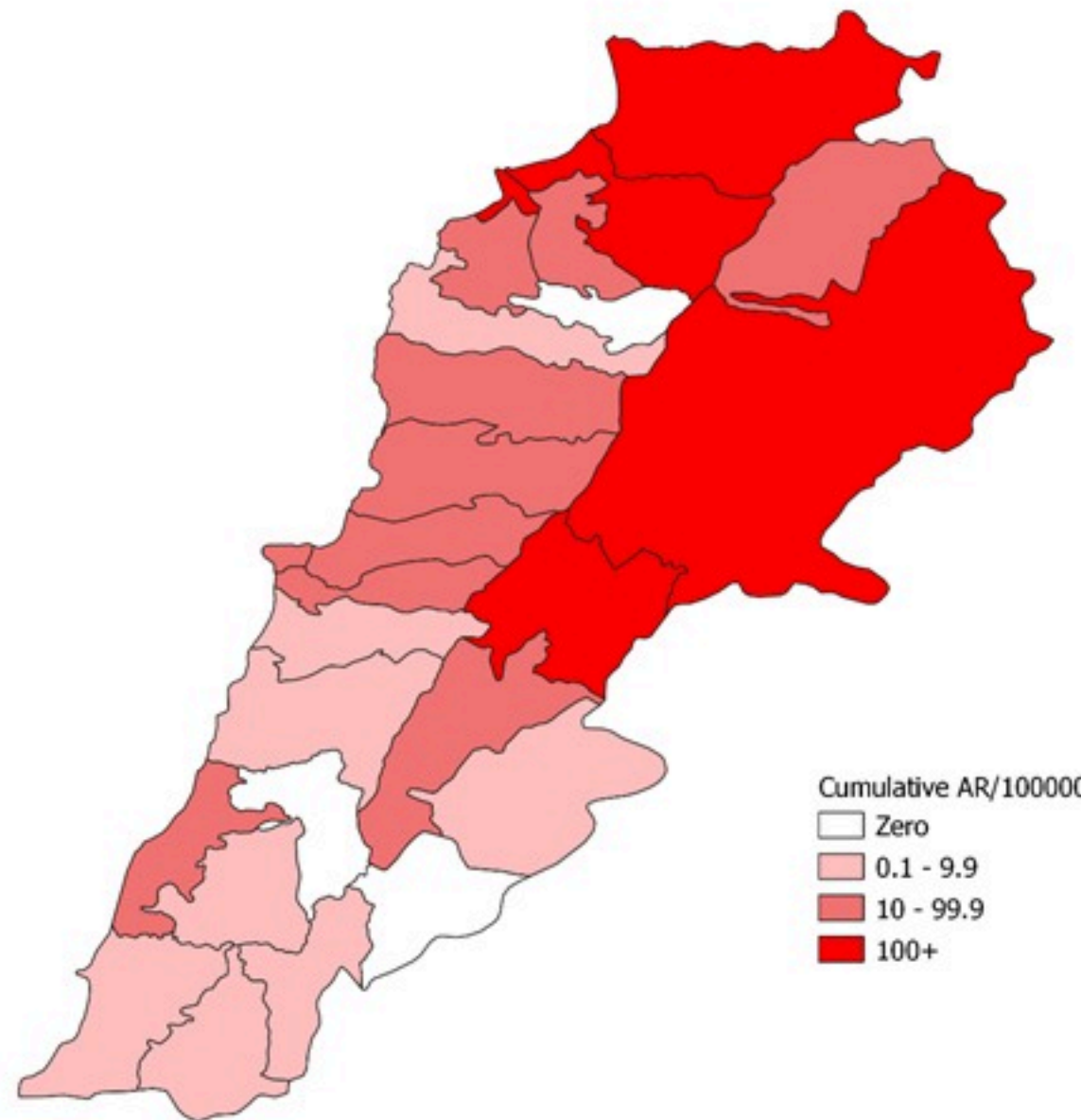
Cholera Surveillance Update

9 Feb 2023

4

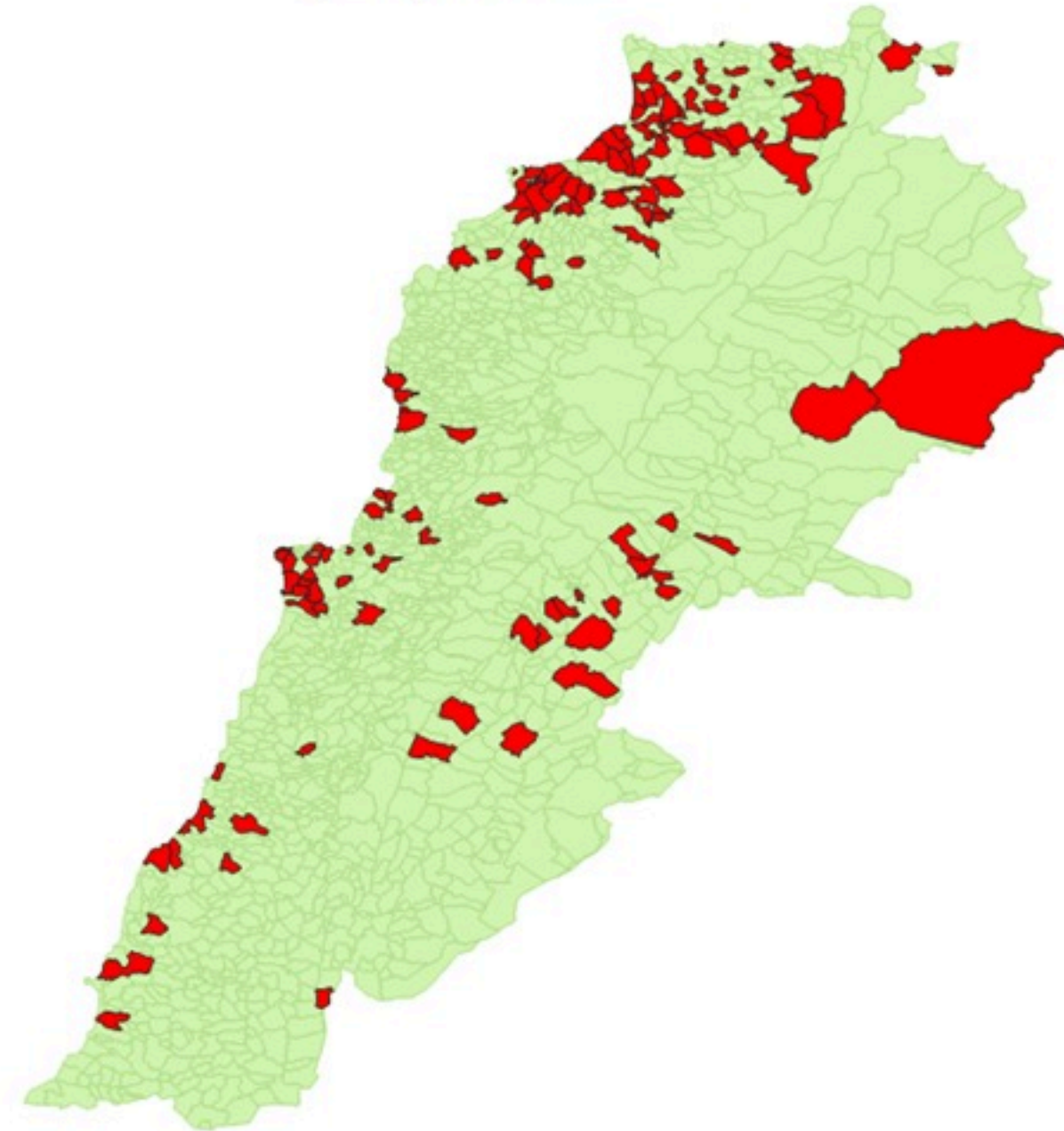
Cumulative Attack Rate per 100,000 (suspected and confirmed)

نسبة الحدوث التراكمية لكل مئة ألف نسمة (الحالات المشتبهية والمثبتة)



Cholera Surveillance Update 9 Feb 2023

By locality (confirmed)
حسب البلدة (المتبئة)



Figures in table are subject to modification following updates and data correction

| Caza | Locality | Cases | Caza | Locality | Cases | |
|-------------------------|---------------------------------|-------------|------------------------|--------------------------|------------|---|
| Akkar | Akkar Atika | 1 | Kiswan | Aintouna | 1 | |
| | Amayer/Quadi Khaled | 1 | | Balfounh | 1 | |
| | Arqa / Marlayet Haddara | 2 | | Bqatouta | 7 | |
| | Bebnine / Baddoua | 16 | | Ghair | 2 | |
| | Beit Hajj/Koucha/Khreibit Jindi | 1 | | Jounieh Ghadir | 4 | |
| | Bergayel | 1 | | Jounieh Sabra | 4 | |
| | Bezbina | 1 | | Yahchouch | 1 | |
| | Birch | 2 | | Zouk Mosbeh | 3 | |
| | Bqerzia | 1 | | Kouna | Aaba | 1 |
| | Cheikh Ayache / Chir Hmairine | 1 | | | Aufdiq | 1 |
| | Dahr Qambar /Hokr Qatteh | 1 | | | Basa | 1 |
| | Dabadab | 1 | Bsama | | 1 | |
| | Dinbou | 2 | Dahr Ain / Ras Masqua | | 1 | |
| | Fneydek | 1 | Rachdibbine | | 1 | |
| | Halba | 1 | Kfar Aqa | | 1 | |
| | Hayssa | 1 | Aadayssah | | 1 | |
| | Hocouich | 1 | Marjoun | | Biklaya | 1 |
| | Jdeidat Qaytee | 1 | | | Broummata | 1 |
| | Kfar Harra | 4 | | Bsalim | 1 | |
| | Kfar Melki | 1 | | Daruna/Borj Hammoud | 2 | |
| | Khane Hayat | 1 | | Mansourieh | 3 | |
| | Khirbet Char | 2 | | Zalqa | 1 | |
| | Kneisset Hnaldar | 1 | | Minieh Danieh | Aadoua | 1 |
| | Kouachra | 1 | Assoun | | 4 | |
| | Koukikhat | 2 | Ain El Timh | | 1 | |
| | Machha | 2 | Bahsa | | 1 | |
| | Majdala | 1 | Bakhaoum | | 4 | |
| | Memneaa | 1 | Bhanine / Zouk Bhanine | | 7 | |
| | Mhamarah / Nahr Bared / Abdeh | 22 | Btamar | | 6 | |
| | Minlara | 1 | Douniya | | 1 | |
| | Mqyatea | 1 | Kfar Chollane | | 2 | |
| | Ouadi Jamous | 11 | Kfar Habou | | 1 | |
| | Qaabrine / Tal Hayat | 1 | Makubta | | 2 | |
| Qbalyat | 1 | Minieh | 18 | | | |
| Qlayat Akkar | 2 | Qouatiyh | 1 | | | |
| Qobet Chamra | 17 | Qatime | 3 | | | |
| Rahbeh | 1 | Rihanieh | 35 | | | |
| Ransiyeh / Deir Dalloum | 1 | Sir Dannieh | 5 | | | |
| Saadine | 4 | Saïda | Aanqoun | | 1 | |
| Tell Abbas Charqui | 2 | | Bissariyeh | | 4 | |
| Tieil | 1 | | Ghazieh | 2 | | |
| Zouq Haddara | 1 | | Khawayeb | 3 | | |
| Zouq Hosnieh | 1 | | Saïda | 1 | | |
| | | | Sawfand | 1 | | |
| Aley | Aley | 1 | Sour | Abbassiyeh | 1 | |
| | Hay Selloum/Chouifat | 1 | | Deir Qaroun Ain | 4 | |
| Baalbek | Ain Roumanneh | 1 | Tripoli | Badawi | 16 | |
| | Borj Brajneh | 3 | | Mina | 7 | |
| | Ghbayroh/Chiyah/Sabra | 2 | | Qobbah | 21 | |
| | Hadath | 1 | | Tripoli Bab Raml | 1 | |
| | Haret Hireik | 1 | | Tripoli Gardans | 2 | |
| | Kfar Chima | 1 | | Tripoli Haddadine | 1 | |
| | Mrejjih | 2 | | Tripoli Nouri | 1 | |
| Baalbeck | Arsal | 27 | | Tripoli Souayqa / Jsrain | 3 | |
| | Kfar Dabache | 2 | | Tripoli Tabbaneh | 21 | |
| | Khodr | 2 | | Tripoli Zaitoun | 15 | |
| | Temnine Faouqa | 1 | West Beqaa | Kamel Jaruz | 1 | |
| | Temnine Tahta | 1 | | Kufaya | 1 | |
| Younine | 1 | Saghbine | | 1 | | |
| Batroun | Chikka | 1 | | Zahleh | Aali Nahri | 2 |
| | Achrafieh | 2 | | | Bar Elias | 2 |
| | Ain Miralsseh | 1 | | | Dalhamieh | 2 |
| | Hamra | 1 | Harouch Mandra | | 1 | |
| | Mdsouar / Mar Mikhael | 1 | Hawch Omara | | 7 | |
| Beirut | Msaïtbeh | 1 | Majdal Anjar | 1 | | |
| | Chouf | Zaarouriyeh | 1 | Qob Elias | 9 | |
| | | Amchit | 2 | Raait | 11 | |
| | | Ehmej | 1 | Saadinayd | 11 | |
| | | Fidar | 1 | Talabaya | 2 | |
| Halate | | 1 | Zahleh Madaka | 2 | | |
| Jbeil | Jbeil | 1 | Zghorta | Aalma | 1 | |
| | Mastita | 2 | | Andeh | 1 | |
| | | | | Kfar Dhaqous | 2 | |
| | | | | Majdalya Zghorta | 7 | |
| | | | | Miriata / Fazar | 3 | |
| | | | | Sabwad | 1 | |
| | | | | Zghorta | 5 | |