

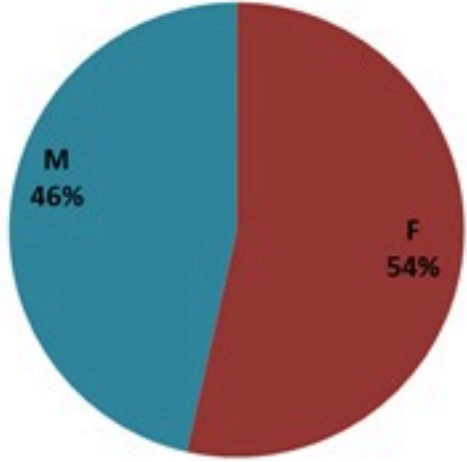
# ترصد الكوليرا في لبنان 23 شباط 2023

الجمهورية اللبنانية  
وزارة الصحة العامة  
برنامج الترصد الوبائي



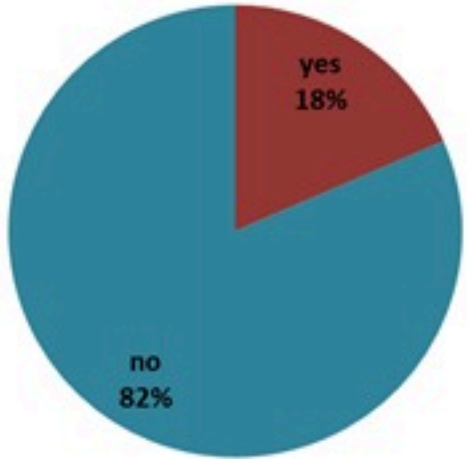
## الخطوط الساخنة

1760 (الصليب الأحمر)  
1787 (وزارة الصحة)



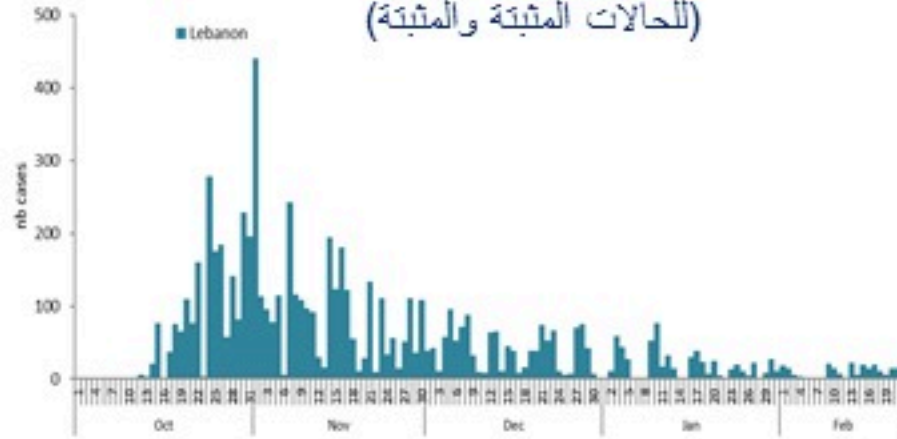
حسب الجنس  
(المشبهة والمثبتة)

الوفيات (المثبتة)		الحالات المثبتة		كافة الحالات المشبهة والمثبتة	
التراكمي	الجديدة (آخر 24 ساعة)	التراكمي	الجديدة (آخر 24 ساعة)	التراكمي	الجديدة (آخر 24 ساعة)
23	0	671	0	6595	19

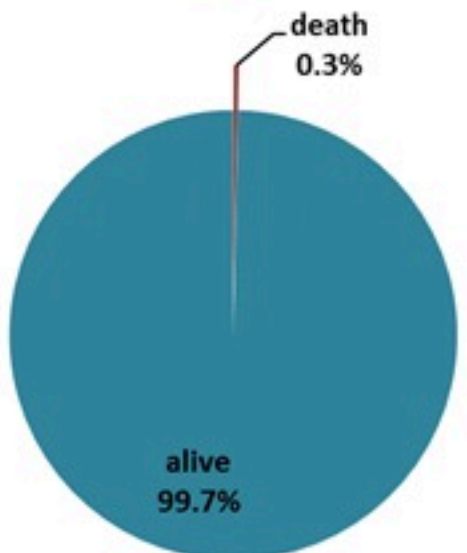
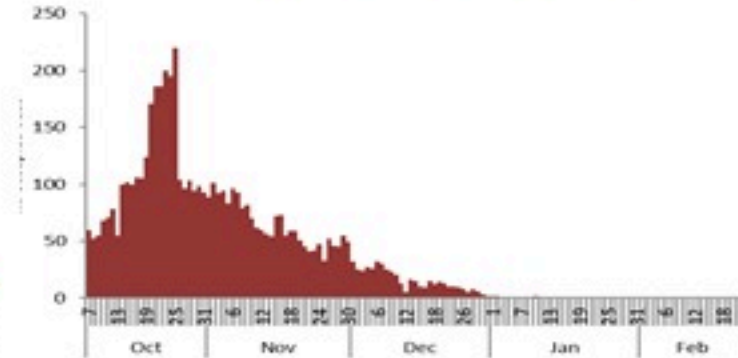


حسب الاستشفاء  
(المشبهة والمثبتة)

حسب تاريخ الإبلاغ  
(للحالات المثبتة والمثبتة)

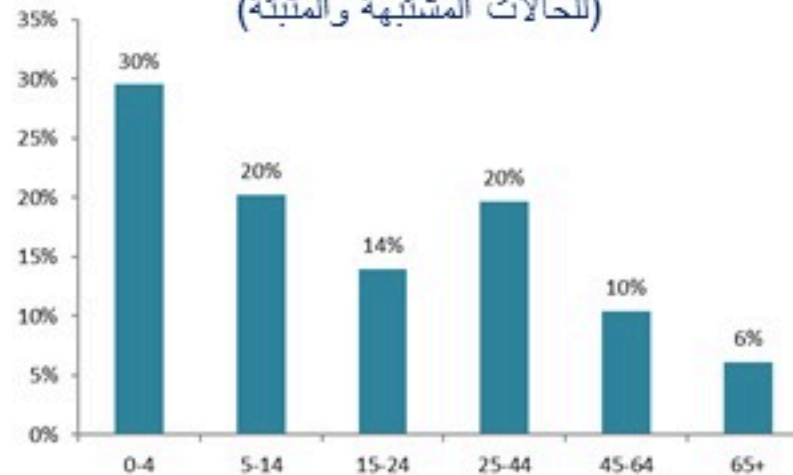


استعمال الاسرة الاستشفائية  
(للحالات المثبتة والمثبتة)



حسب تطور  
الحالة  
(المشبهة والمثبتة)

حسب الفئة العمرية  
(للحالات المشبهة والمثبتة)



حسب البلدة  
(للحالات المثبتة)



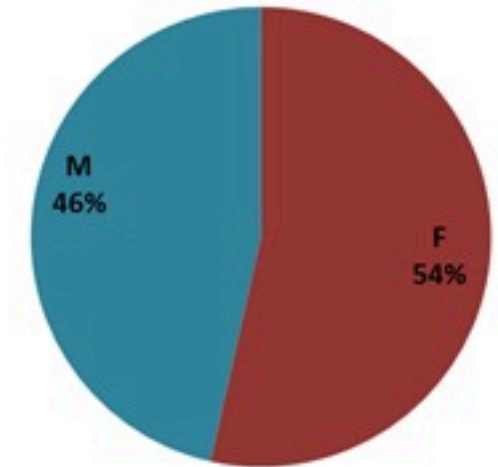
# Cholera Surveillance Report

## 23 Feb 2023

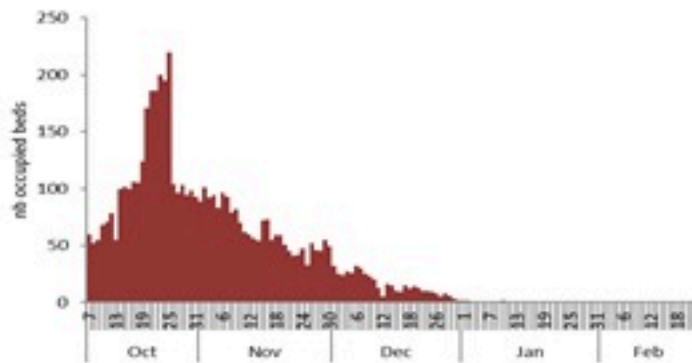
**Call Centers**  
 1760 (Red Cross)  
 1787 (MOPH)

All cases (suspected and confirmed)		Confirmed Cases		Deaths (confirmed)	
New (past 24 h)	Cumulative	New (past 24 h)	Cumulative	New	Cumulative
<b>19</b>	<b>6595</b>	<b>0</b>	<b>671</b>	<b>0</b>	<b>23</b>

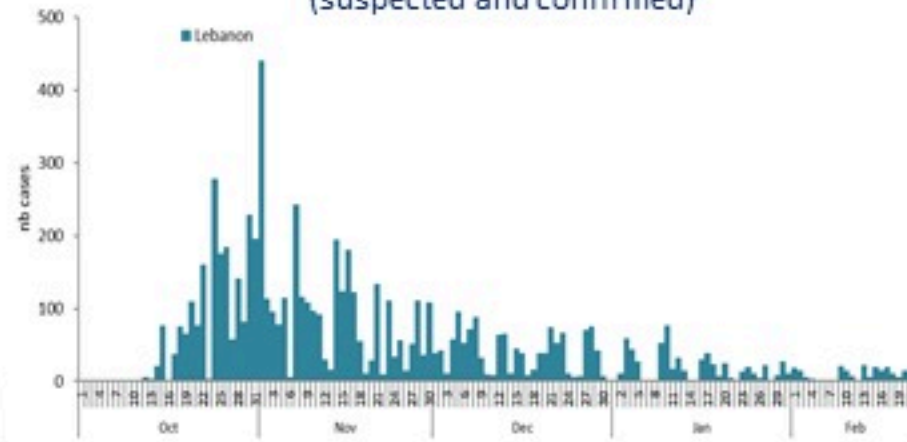
By Sex  
(suspected and confirmed)



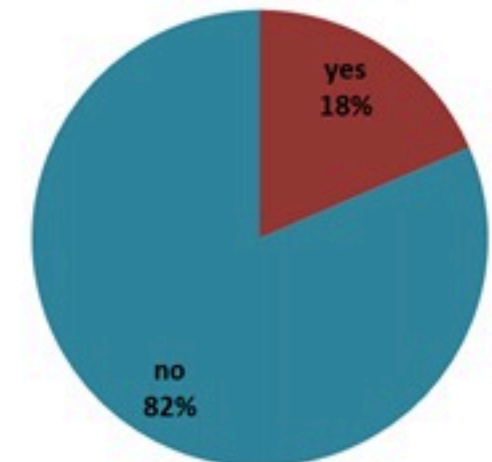
Occupied hospital beds  
(suspected and confirmed)



By date of report  
(suspected and confirmed)



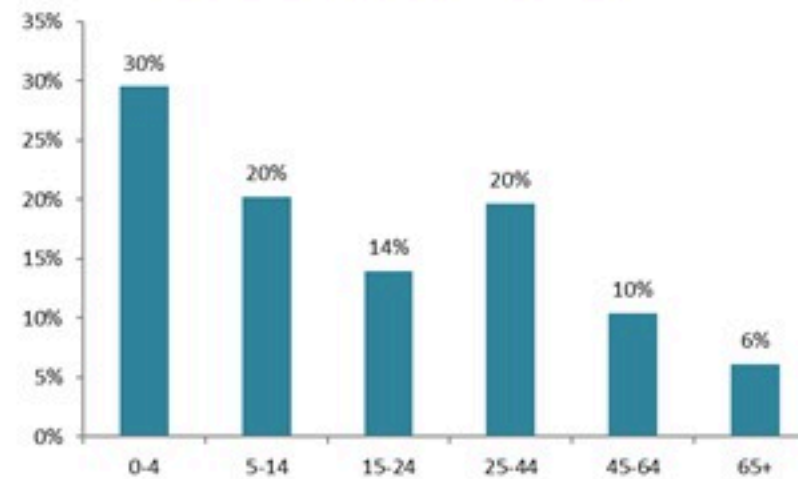
By Hospital Admission  
(suspected and confirmed)



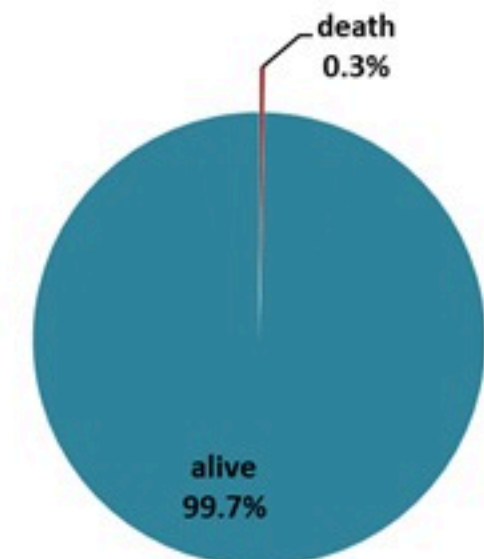
By locality (confirmed cases)



By age group  
(suspected and confirmed cases)



By Outcome  
(suspected and confirmed)

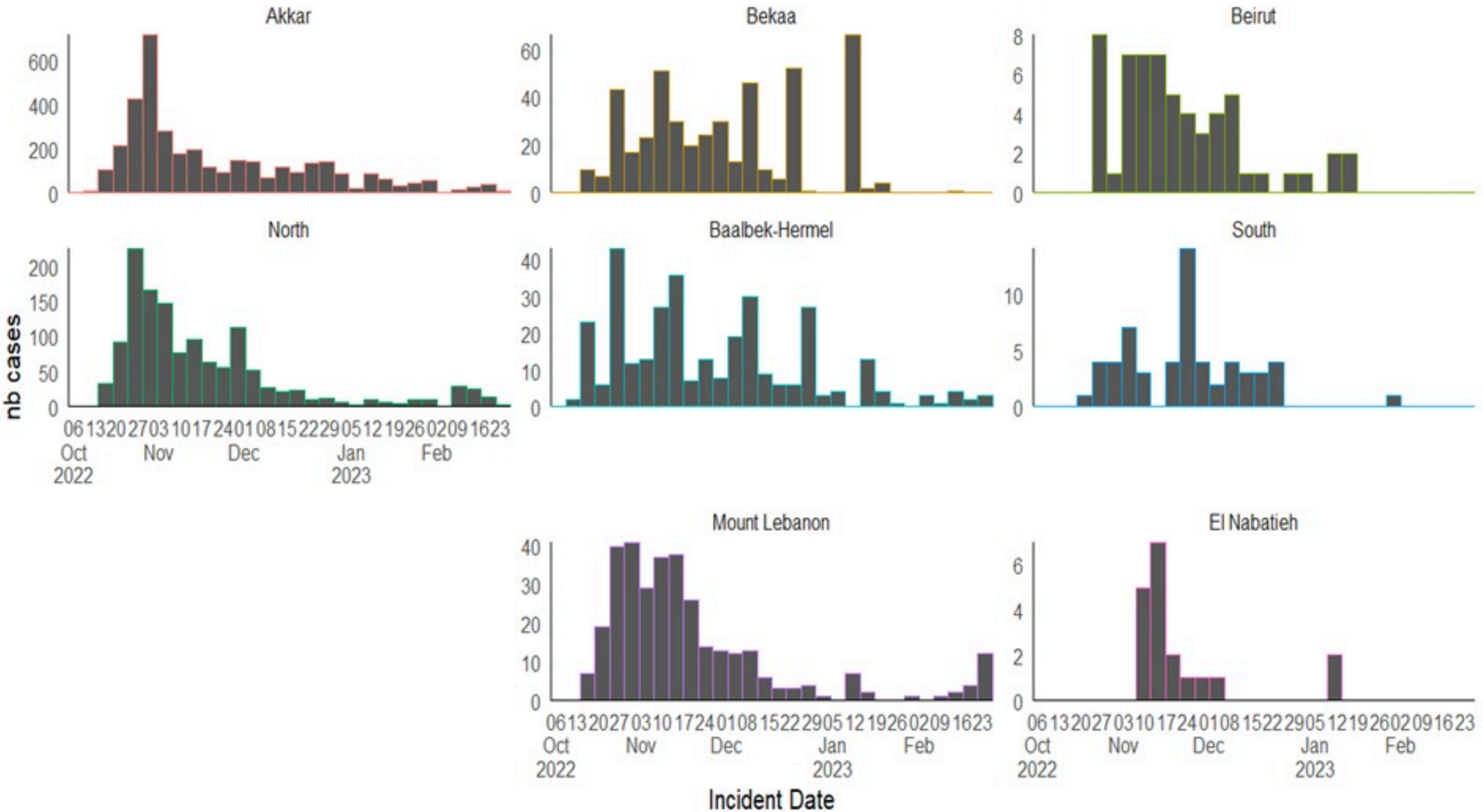




# Cholera Surveillance Report

## 23 Feb 2023

Epicurves by date of reporting by province  
(suspected and confirmed)



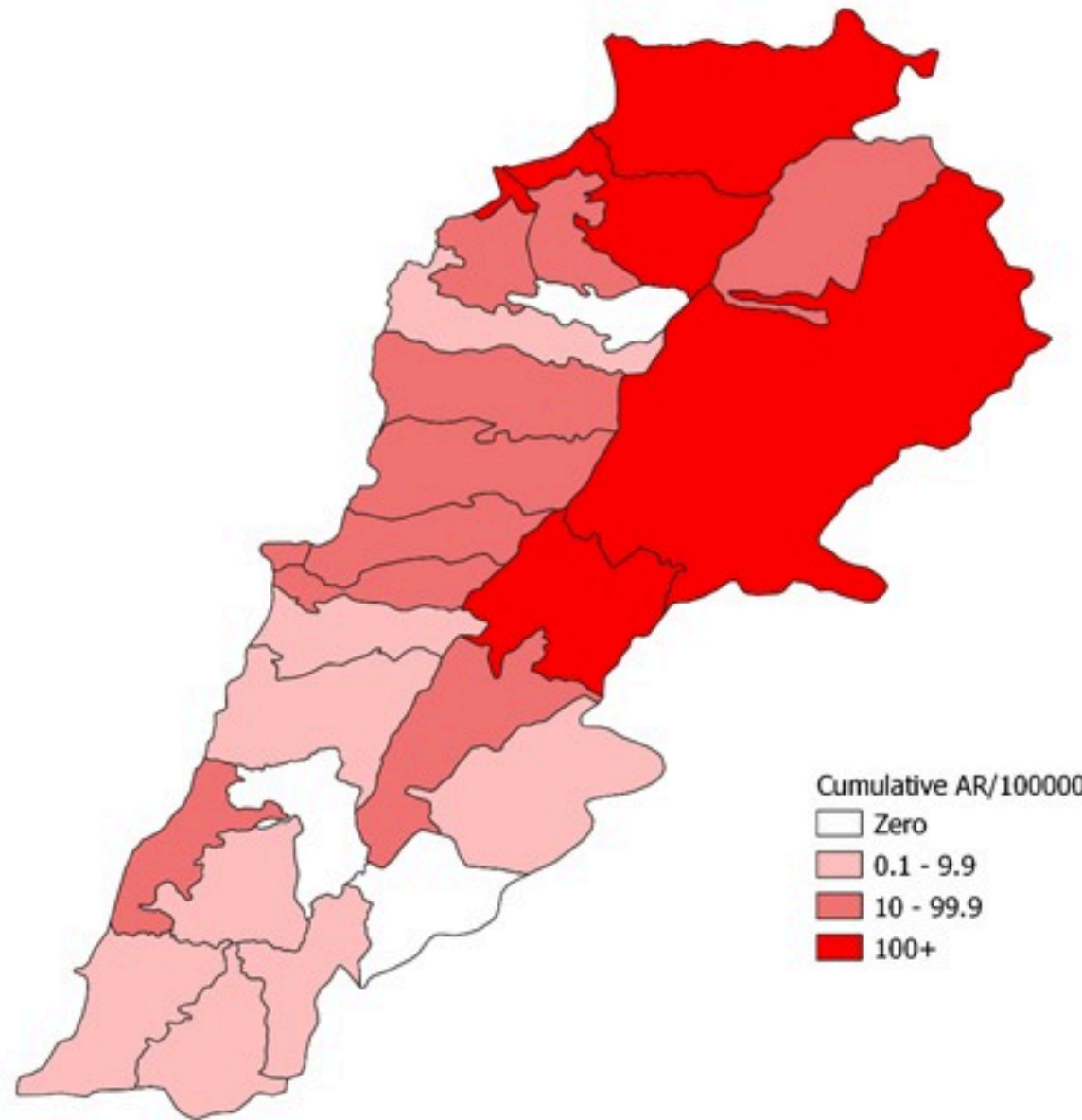
# Cholera Surveillance Update

23 Feb 2023

4

Cumulative Attack Rate per 100,000 (suspected and confirmed)

نسبة الحدوث التراكمية لكل مئة ألف نسمة (الحالات المشتبهية والمثبتة)

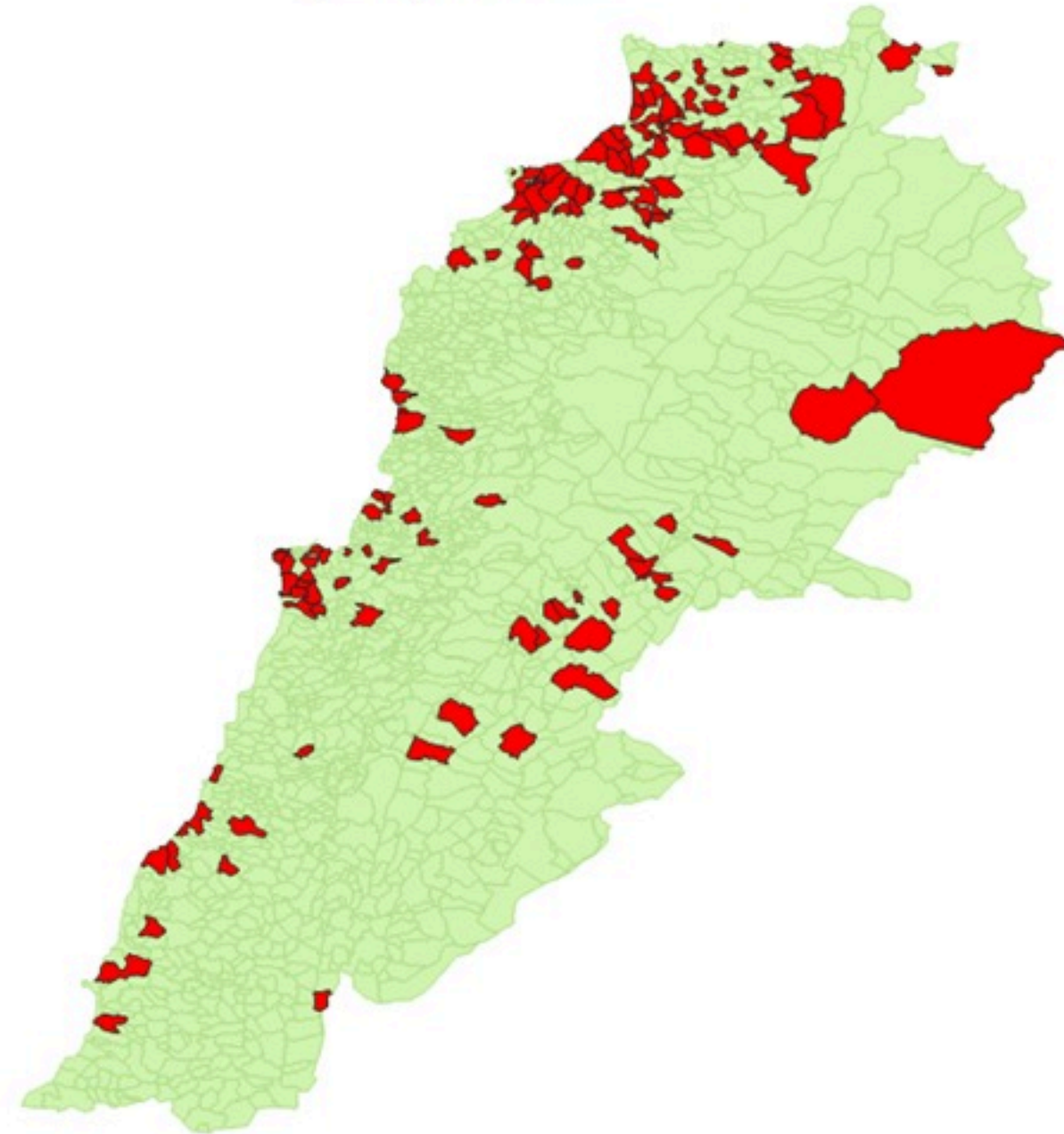




# Cholera Surveillance Update

## 23 Feb 2023

By locality (confirmed)  
حسب البلدة (المتبنة)



Figures in table are subject to modification following updates and data correction

Caza	Locality	cases	Caza	Locality	cases		
Akkar	Akkar Atika	1	Kiswan	Aintouna	1		
	Amayer/Quadi Khaled	1		Balfounh	1		
	Arqa / Marlayet Haddara	2		Bqatouta	7		
	Bebnine / Baddoua	16		Ghair	2		
	Beit Hajj/Koucha/Khreibit Jindi	1		Jounieh Ghadir	4		
	Bergayel	1		Jounieh Sabra	4		
	Bezbina	1		Yahchouch	1		
	Birch	2		Zouk Mosbeh	3		
	Bqerzia	1		Kouna	Aaba	1	
	Cheikh Ayache / Chir Hmairine	1			Aufdiq	1	
	Dahr Qambar /Hokr Gatteh	1			Basa	1	
	Dabadab	1	Bsama		1		
	Dinbou	2	Dahr Ain / Ras Masqua		1		
	Fneydek	1	Rachdibbine		1		
	Halba	1	Kfar Aqa		1		
	Hayssa	1	Aadayssah		1		
	Hocouich	1	Marjoun		Biklaya	1	
	Jdeidat Qaytee	1			Broummata	1	
	Kfar Harra	4		Bsalim	1		
	Kfar Melki	1		Daruna/Borj Hammoud	2		
	Khane Hayat	1		Mansourieh	3		
	Khirbet Char	2		Zalqa	1		
	Kneisset Hnaldar	1		Minieh Danieh	Aadoua	1	
	Kouachra	1	Assoun		4		
	Koukhat	2	Ain El Timh		1		
	Machha	2	Bahsa		1		
	Majdala	1	Bakhaoum		4		
	Memneaa	1	Bhanine / Zouk Bhanine		7		
	Mhamarah / Nahr Bared / Abdeh	22	Bamar		6		
	Minlara	1	Douniya		1		
	Mqyatea	1	Kfar Chollane		2		
	Ouadi Jamous	11	Kfar Habou		1		
Qaabrine / Tal Hayat	1	Makabta	2				
Qbalyat	1	Minieh	18				
Qlayat Akkar	2	Qouatiyh	1				
Qobet Chamra	17	Qatime	3				
Rahbeh	1	Rihanieh	35				
Ransiyeh / Deir Dalloum	1	Sir Dannieh	5				
Saadine	4	Saïda	Aanqoun		1		
Tell Abbas Charqui	2		Bissariyeh		4		
Tieil	1		Ghazieh	2			
Zouq Haddara	1		Khawayb	3			
Zouq Hosnieh	1		Saïda	1			
			Sawfand	1			
Aley	Aley	1	Sour	Abbasiyeh	1		
	Hay Selloum/Chouifat	1		Deir Qaroun Ain	4		
Baalbek	Ain Roumanneh	1	Tripoli	Badawi	16		
	Borj Brajneh	3		Mina	7		
	Ghbayroh/Chiyah/Sabra	2		Qobbah	21		
	Hadath	1		Tripoli Bab Raml	1		
	Haret Hireik	1		Tripoli Gardans	2		
	Kfar Chima	1		Tripoli Haddadine	1		
	Mrejijh	2		Tripoli Nouri	1		
Baalbeck	Arsal	27		Tripoli Souayqa / Jsrain	3		
	Kfar Dabache	2		Tripoli Tabbaneh	21		
	Khodr	2		Tripoli Zaitoun	15		
	Temnine Faouqa	1		West Beqaa	Kamel Jaruz	1	
	Temnine Tahta	1	Kufaya		1		
Younine	1	Saghbine	1				
Batroun	Chikka	1	Zahleh		Aali Nahri	2	
	Beirut	Achrafieh			2	Bar Elias	2
		Ain Miralssch			1	Dalhamieh	2
		Hamra			1	Hazuch Mandra	1
		Mdsour / Mar Mikhael		1	Hawch Omara	7	
Msaitbeh		1		Majdal Anjar	1		
Chouf	Zaarouriyeh	1		Qob Elias	9		
	Jbeil	Amchit		1	Raait	11	
		Ehmej		1	Saadinayd	11	
		Fidar		1	Talabaya	2	
		Halate		1	Zahleh Madaka	2	
Jbeil		1	Zghorta	Aalma	1		
Mastita	2	Andeh		1			
		Kfar Drazous		2			
		Majdalya Zghorta		7			
		Miriata / Fozur		3			
		Sabwad		1			
		Zghorta		5			