

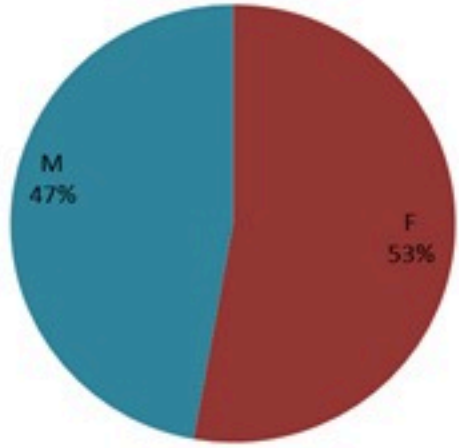
ترصد الكوليرا في لبنان 17 كانون الاول 2022

الجمهورية اللبنانية
وزارة الصحة العامة
برنامج الترصد الوبائي



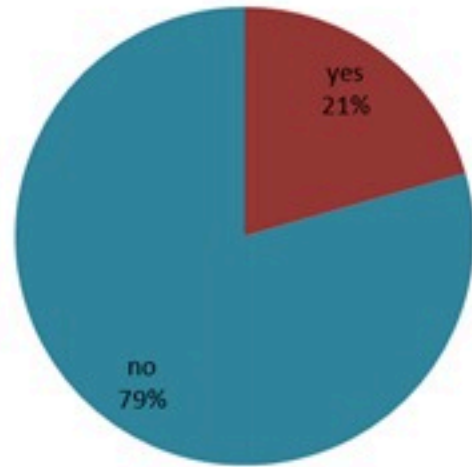
الخطوط الساخنة

1760 (الصليب الأحمر)
1787 (وزارة الصحة)



حسب الجنس
(المشبهة والمتبنة)

الوفيات (المتبنة)		الحالات المثبتة		كافة الحالات المشبهة والمتبنة	
التراكمي	الجديدة (آخر 24 ساعة)	التراكمي	الجديدة (آخر 24 ساعة)	التراكمي	الجديدة (آخر 24 ساعة)
23	0	663	2	5325	31

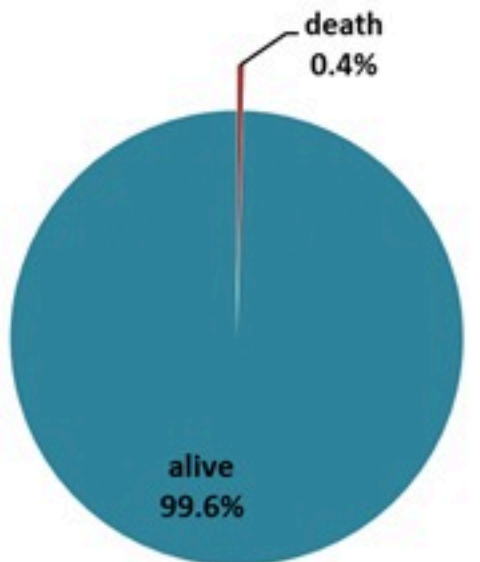
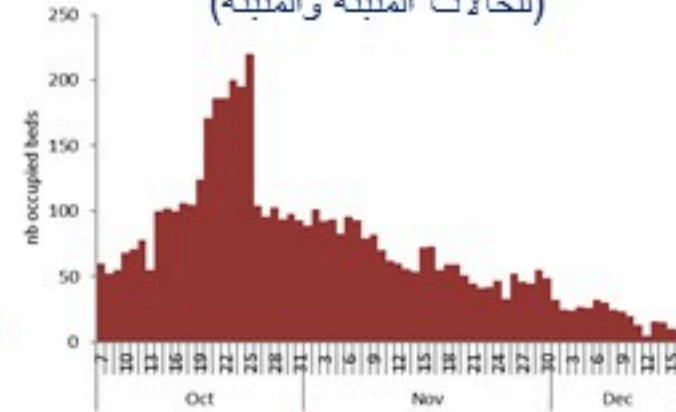


حسب الاستشفاء
(المشبهة والمتبنة)

حسب تاريخ الإبلاغ
(للحالات المثبتة والمتبنة)

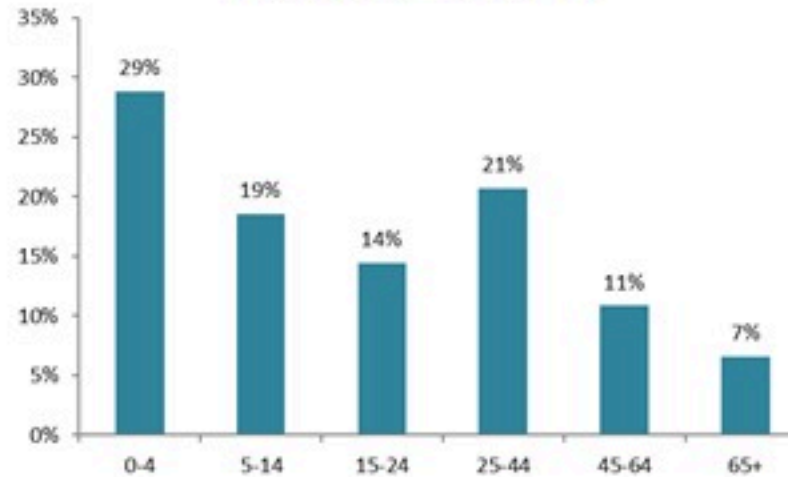


استعمال الاسرة الاستشفائية
(للحالات المثبتة والمتبنة)



حسب تطور
الحالة
(المشبهة والمتبنة)

حسب الفئة العمرية
(للحالات المثبتة والمتبنة)



حسب البلدة
(للحالات المثبتة)



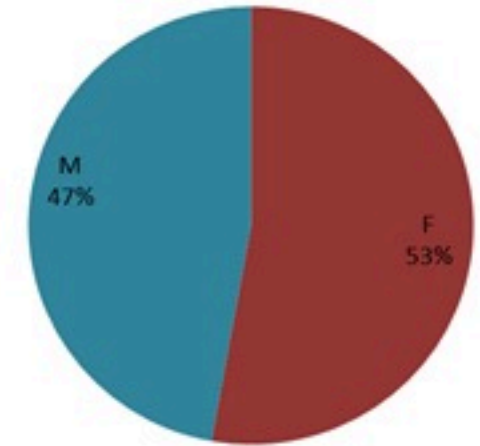
Cholera Surveillance Report

17 Dec 2022

Call Centers
 1760 (Red Cross)
 1787 (MOPH)

All cases (suspected and confirmed)		Confirmed Cases		Deaths (confirmed)	
New (past 24 h)	Cumulative	New (past 24 h)	Cumulative	New	Cumulative
31	5325	2	663	0	23

By Sex
(suspected and confirmed)



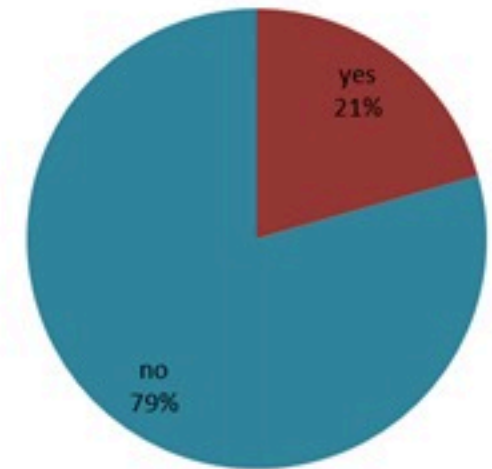
Occupied hospital beds
(suspected and confirmed)



By date of report
(suspected and confirmed)



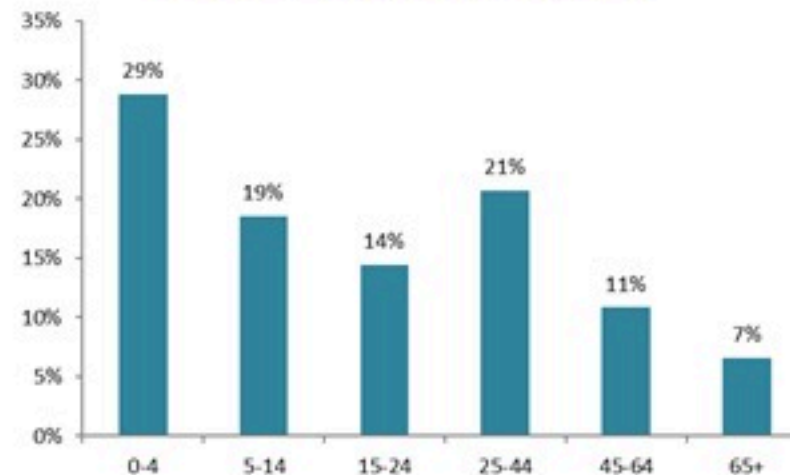
By Hospital Admission
(suspected and confirmed)



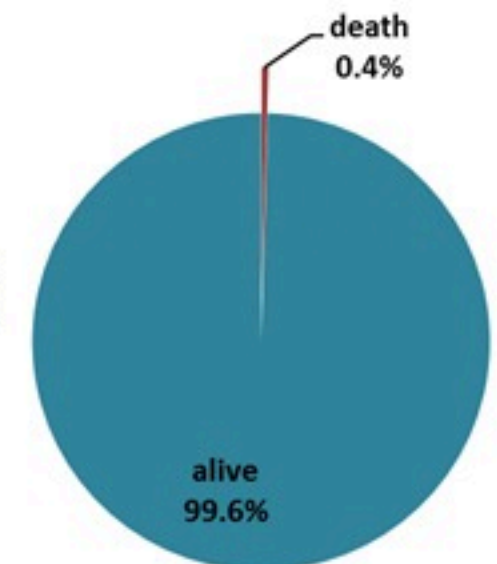
By locality (confirmed cases)



By age group
(suspected and confirmed cases)



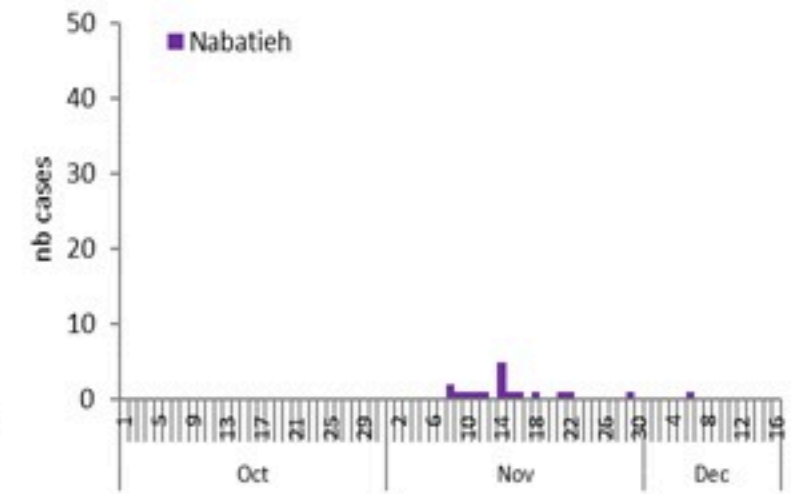
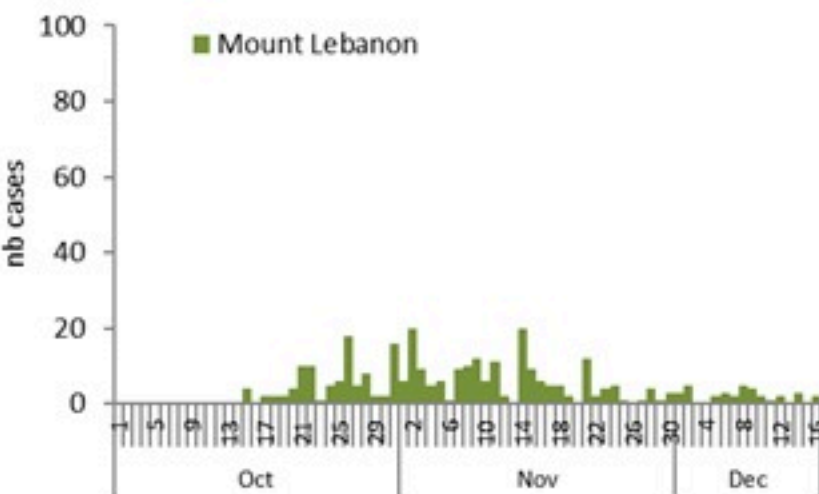
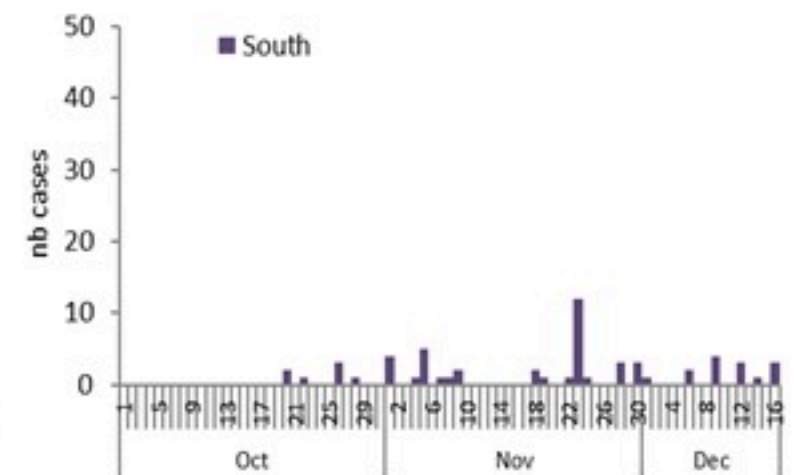
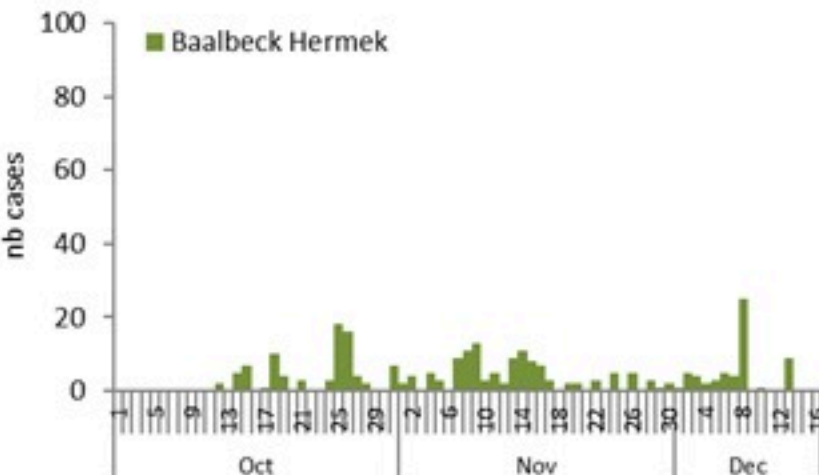
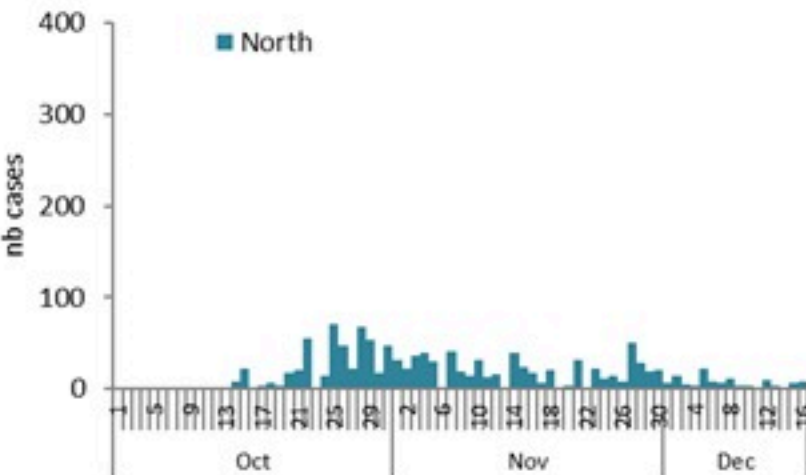
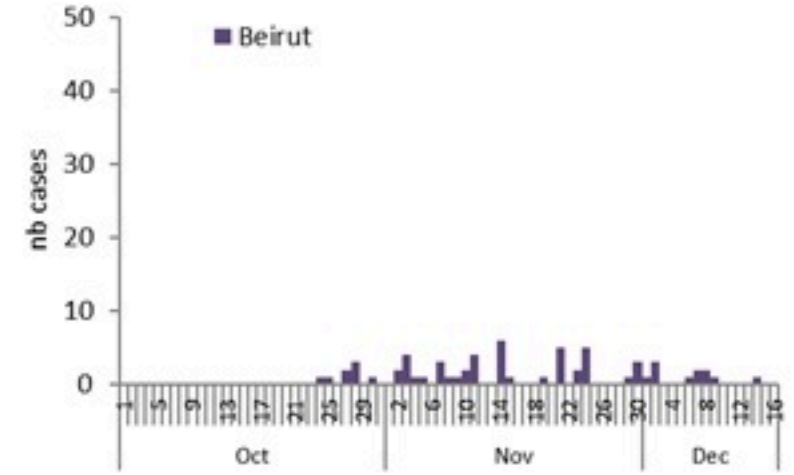
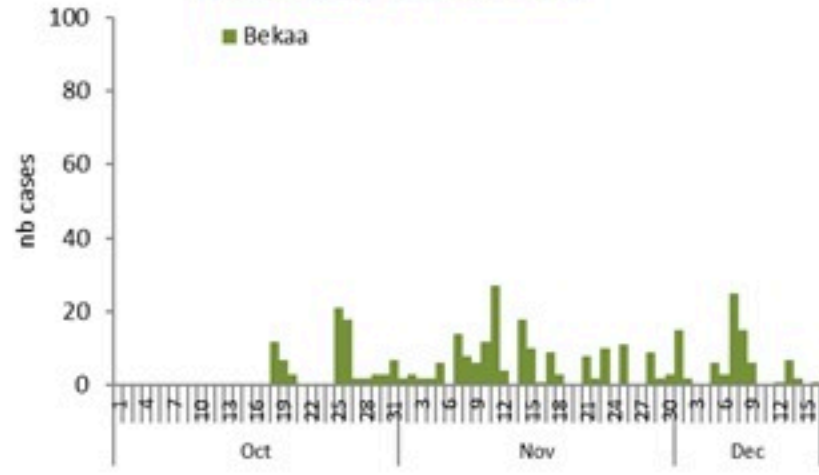
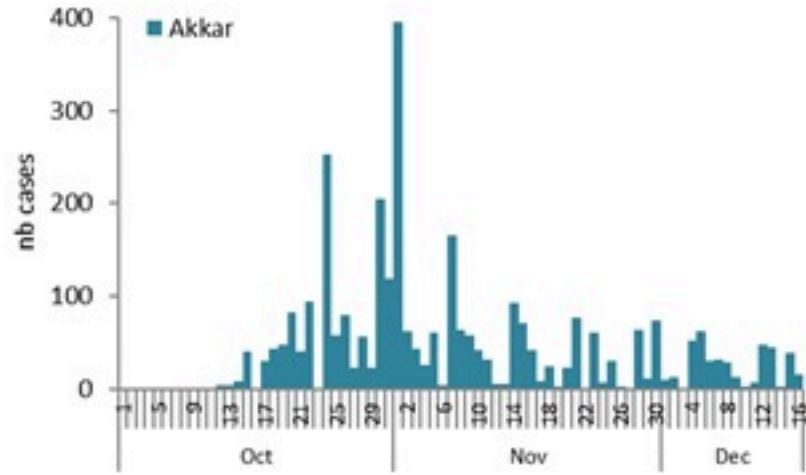
By Outcome
(suspected and confirmed)



Cholera Surveillance Report

17 Dec 2022

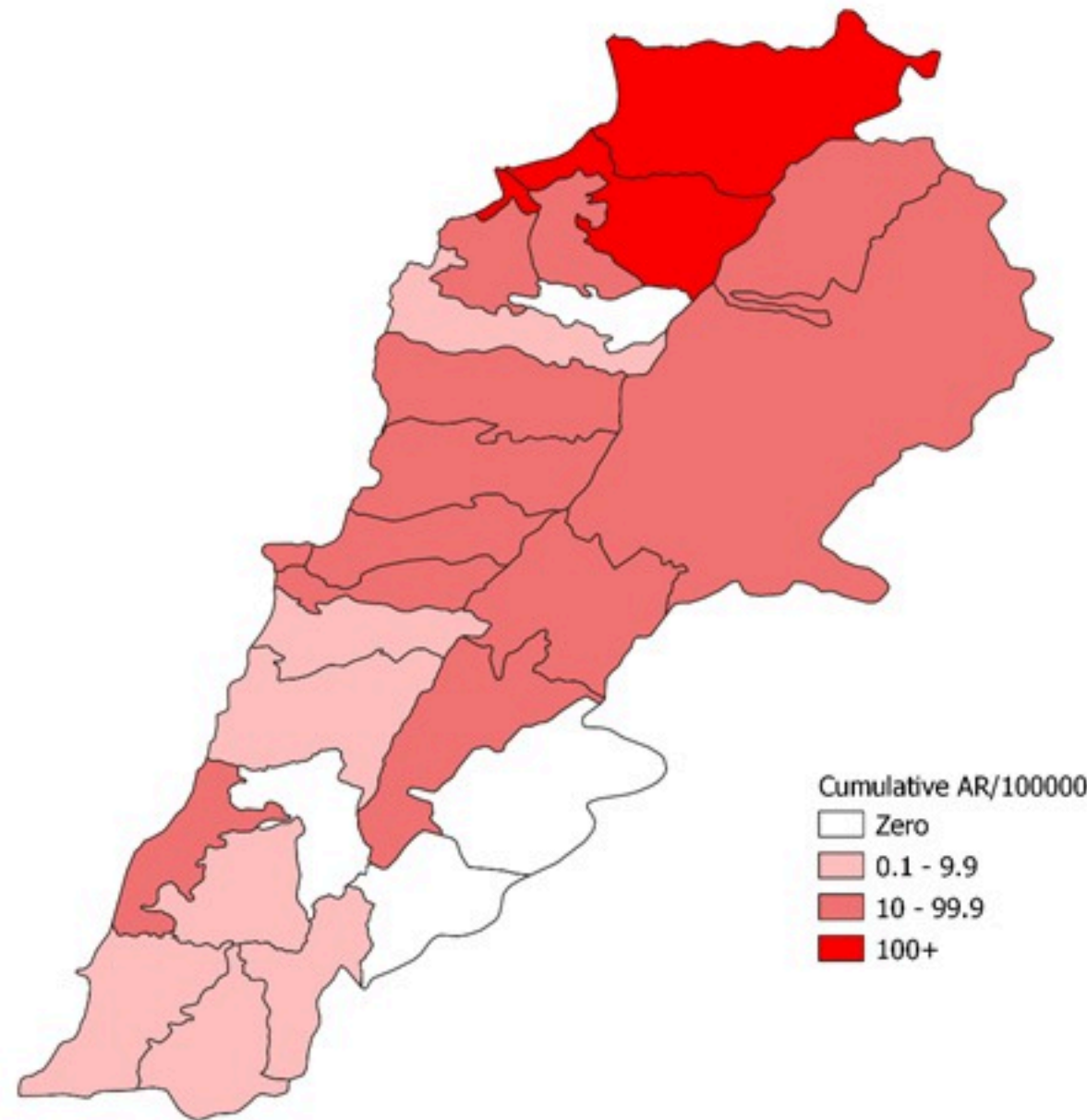
Epicurves by date of reporting by province (suspected and confirmed)



Cholera Surveillance Update

17 Dec 2022

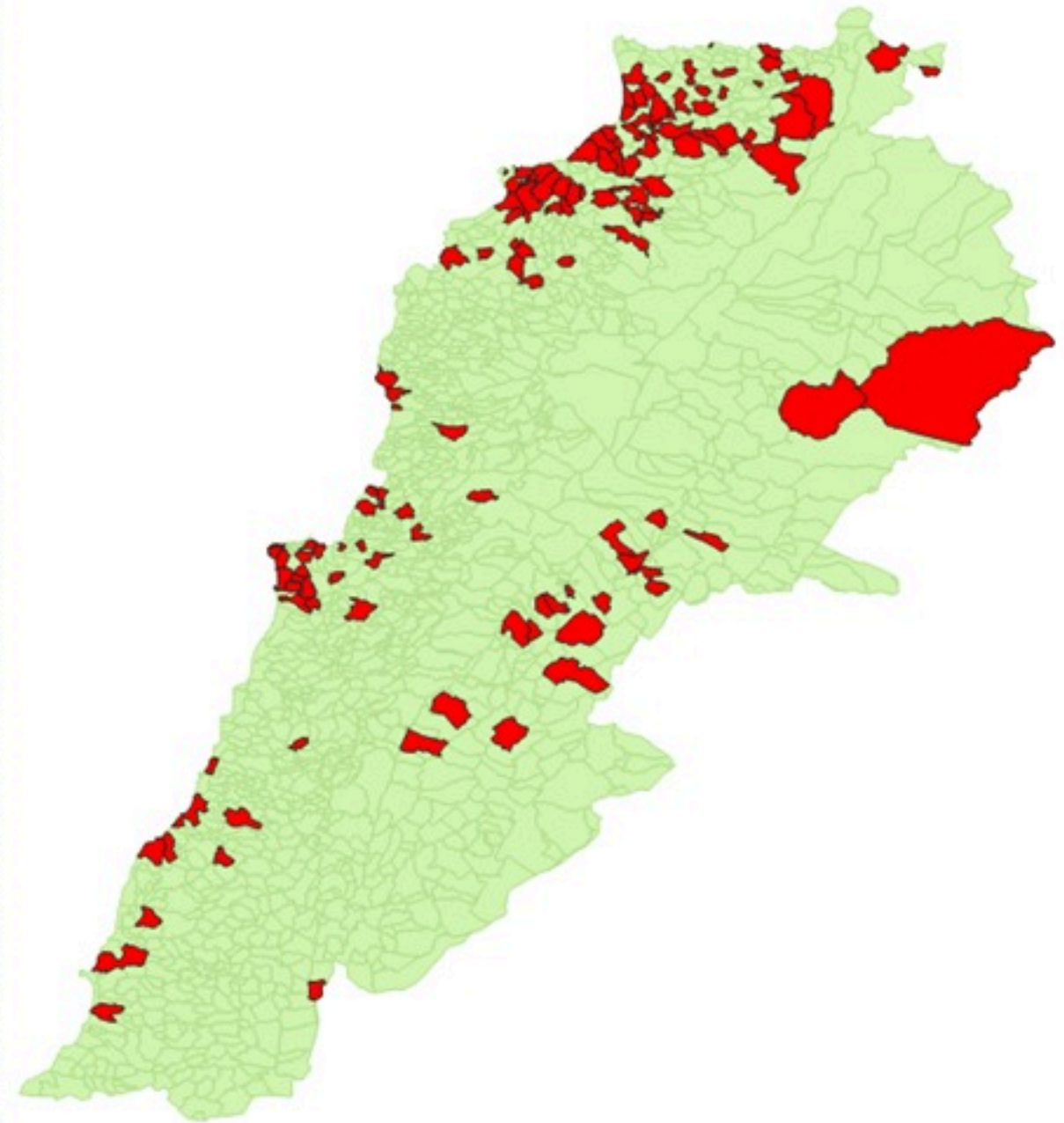
Cumulative Attack Rate per 100,000 (suspected and confirmed)
نسبة الحدوث التراكمية لكل مئة ألف نسمة (الحالات المشتبهية والمثبتة)



Cholera Surveillance Update

17 Dec 2022

By locality (confirmed)
حسب البلدة (المتبئة)



Figures in table are subject to modification following updates and data correction

Locality	cases	Locality	cases
Akkar Atika	1	Kouba	1
Amayer/Quadi Khaled	1	Ainbouna	1
Arqa / Marlayet Haddara	2	Balfounh	1
Bebnine / Baddoua	160	Bqawtula	7
Beit Hajj/Koucha/Khrelbit Jindi	3	Ghair	2
Berqayel	0	Jounieh Ghadir	4
Bezina	1	Jounieh Sabra	4
Birch	2	Yahchouch	1
Bqerzla	1	Zouk Mosbeh	3
Cheikh Ayache / Chir Hmairine	3	Auba	1
Dahr Qambar /Hokr Qatfeh	1	Aufdiq	1
Dabadab	1	Basa	1
Dinbou	2	Bsama	1
Fneydek	1	Dahr Ain / Ras Masqua	1
Halba	1	Rachdibbine	1
Hayssa	1	Kfar Aqa	1
Hocuich	3	Audayssah	1
Jdeidat Qaytee	3	Biklaya	1
Kfar Harra	4	Broummiana	1
Kfar Melki	1	Bsalim	1
Khane Hayat	1	Daruna/Borj Hemmoud	2
Khirbet Char	2	Mansourish	3
Kneisset Hnaldar	1	Zalqa	1
Kouchra	1	Aadoua	1
Kouekhat	2	Assoun	4
Machha	2	Ain El Tineh	1
Majdala	2	Bahsa	1
Memneaa	1	Bakhaoum	4
Mhamarah / Nahr Bared / Abdeh	22	Bhanine / Zouk Bhanine	7
Minlara	3	Bamae	6
Mqyatec	1	Douniya	1
Ouadi Jamous	11	Kfar Chellane	2
Qaabrine / Tal Hayat	7	Kfar Habou	1
Qbalyat	1	Makubta	2
Qlayat Akkar	2	Minieh	18
Qobet Chamra	17	Quatlyeh	1
Rahbeh	1	Qatime	3
Ranslyeh / Deir Dalloum	1	Rihanish	35
Saadine	4	Sir Danniish	5
Tell Abbas Charqui	2	Aenqoun	1
Tleil	1	Bissariyeh	3
Zouq Haddara	1	Ghazish	2
Zouq Hosnich	3	Khawayeb	3
Aley	1	Saïda	1
Hay Selloum/Chouefat	1	Sawfand	1
Ain Roummaneh	1	Sour	1
Borj Brajneh	3	Abbaweyh	1
Ghbayreh/Chiyah/Sabra	2	Dair Qaroun Ain	4
Hadath	3	Badawi	16
Haret Hreik	1	Mina	7
Kfar Chima	1	Qobbah	21
Mrejijh	2	Tripoli Bab Raml	1
Arsal	27	Tripoli Gardans	1
Kfar Dabache	2	Tripoli Haddadine	1
Khodr	2	Tripoli Nouri	1
Temnine Faouqa	1	Tripoli Souayqa / Asraïn	3
Temnine Tahta	9	Tripoli Tabbaneh	20
Younine	1	Tripoli Zaitoun	15
Chikka	1	West Beqaa	1
Achrafieh	2	Kamel Jaruz	1
Ain Mraissch	1	Kufaya	1
Hamra	1	Saghbine	1
Mdaouar / Mar Mikhael	1	Zahleh	2
Msalibeh	1	Aali Nahri	2
Zaarouriyeh	1	Bar Elias	2
Amchit	1	Dalhamish	1
Ehmej	1	Haruch Mandra	1
Jbeil	1	Hawch Omara	7
Mastita	2	Majdal Anjar	1
		Qob Elias	9
		Raait	11
		Saadinayd	11
		Talabaya	2
		Zahleh Madaka	2
		Zghorta	1
		Aalma	1
		Andeh	1
		Kfar Dhaqous	2
		Majdalya Zghorta	7
		Miriata / Fazar	3
		Sabwad	1
		Zghorta	5