

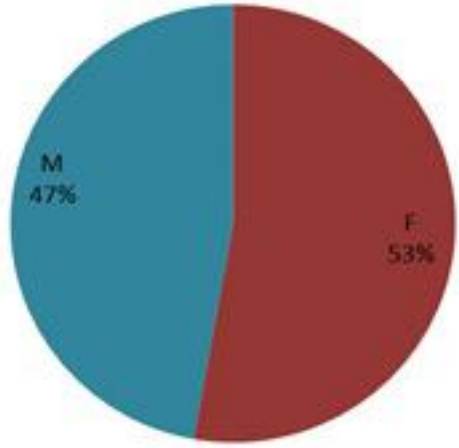
# ترصد الكوليرا في لبنان 12 كانون الاول 2022

الجمهورية اللبنانية  
وزارة الصحة العامة  
برنامج الترصد الوبائي

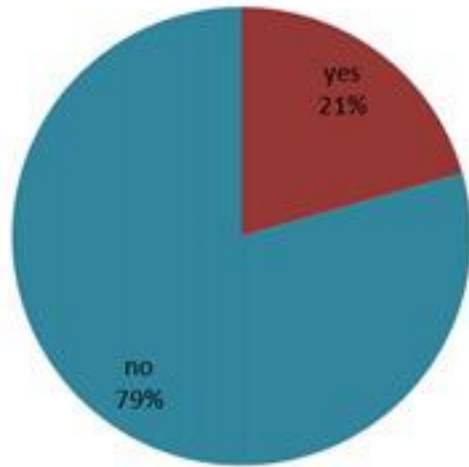


## الخطوط الساخنة

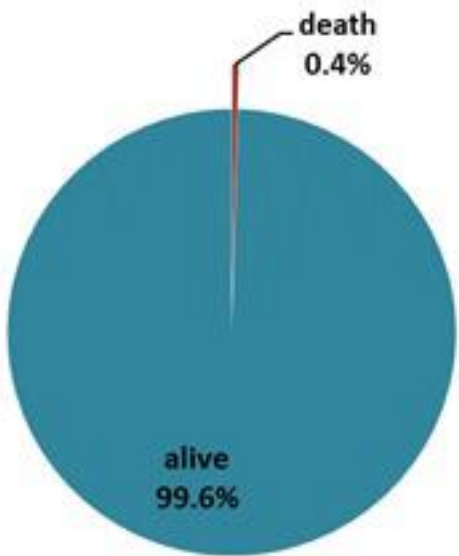
1760 (الصليب الأحمر)  
1787 (وزارة الصحة)



حسب الجنس  
(المشبهة والمتبنة)



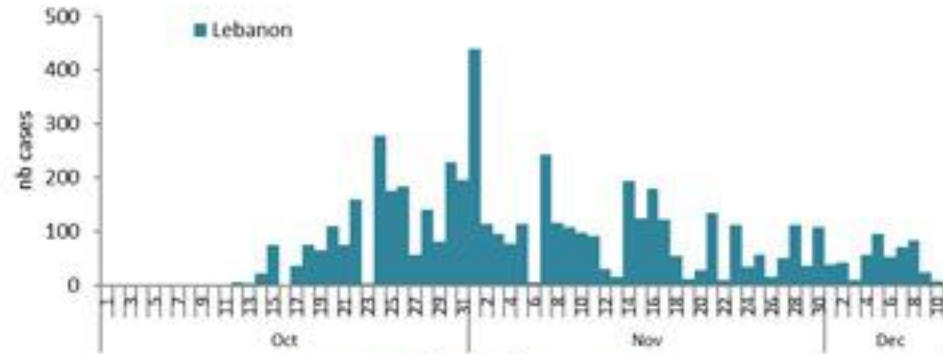
حسب الاستشفاء  
(المشبهة والمتبنة)



حسب تطور الحالة  
(المشبهة والمتبنة)

الوفيات (المتبنة)		الحالات المثبتة		كافة الحالات المشبهة والمتبنة	
التراكمي	الجديدة (آخر 24 ساعة)	التراكمي	الجديدة (آخر 24 ساعة)	التراكمي	الجديدة (آخر 24 ساعة)
23	0	658	0	5136	1

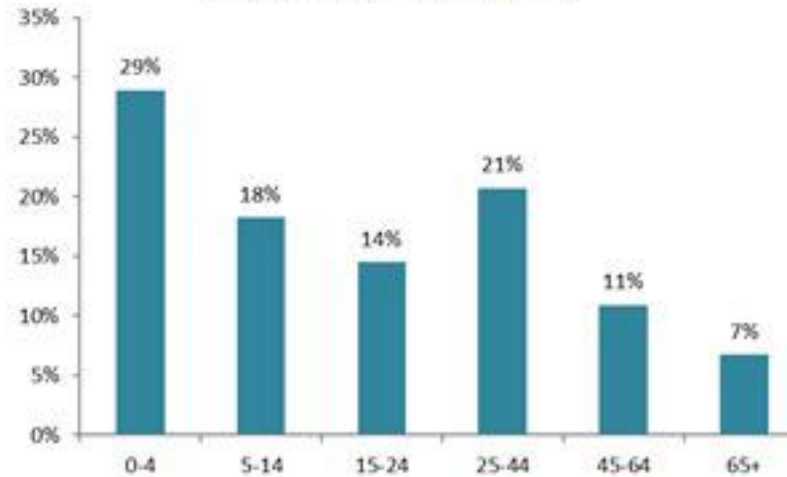
حسب تاريخ الإبلاغ  
(للحالات المثبتة والمتبنة)



استعمال الاسره الاستشفائية  
(للحالات المثبتة والمتبنة)



حسب الفئة العمرية  
(للحالات المشبهة والمتبنة)



حسب البلده  
(للحالات المثبتة)



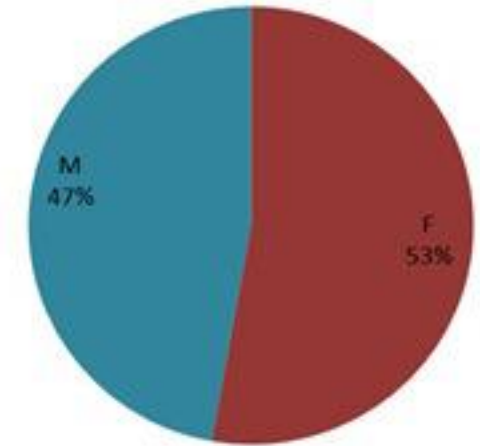
# Cholera Surveillance Report

## 12 Dec 2022

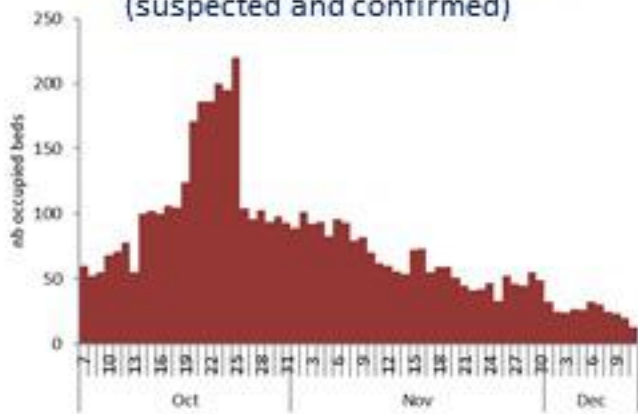
**Call Centers**  
 1760 (Red Cross)  
 1787 (MOPH)

All cases (suspected and confirmed)		Confirmed Cases		Deaths (confirmed)	
New (past 24 h)	Cumulative	New (past 24 h)	Cumulative	New	Cumulative
<b>1</b>	<b>5136</b>	<b>0</b>	<b>658</b>	<b>0</b>	<b>23</b>

By Sex  
(suspected and confirmed)



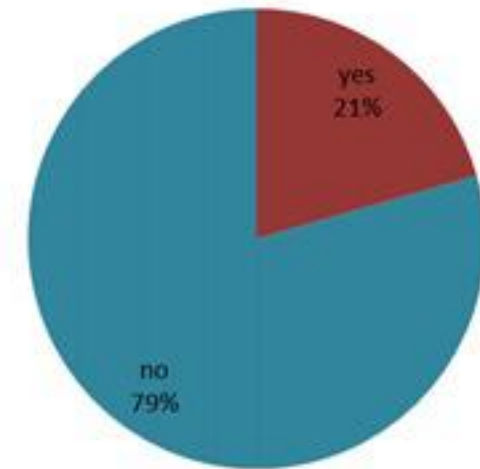
Occupied hospital beds  
(suspected and confirmed)



By date of report  
(suspected and confirmed)



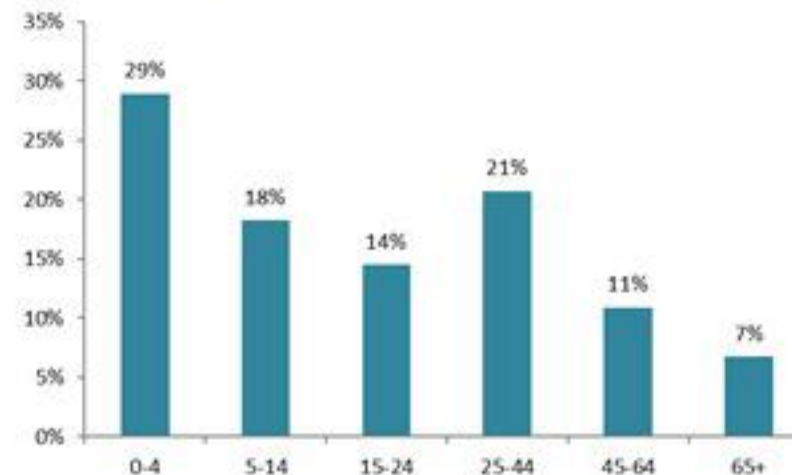
By Hospital Admission  
(suspected and confirmed)



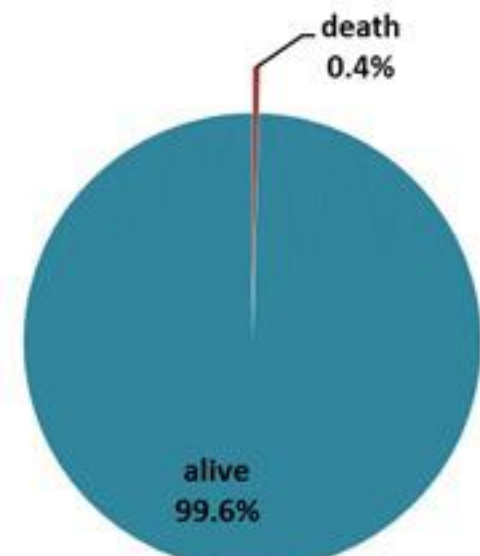
By locality (confirmed cases)



By age group  
(suspected and confirmed cases)



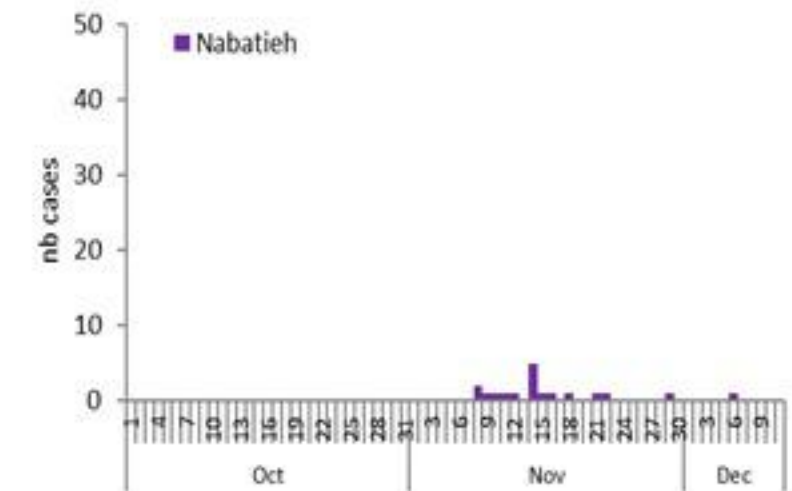
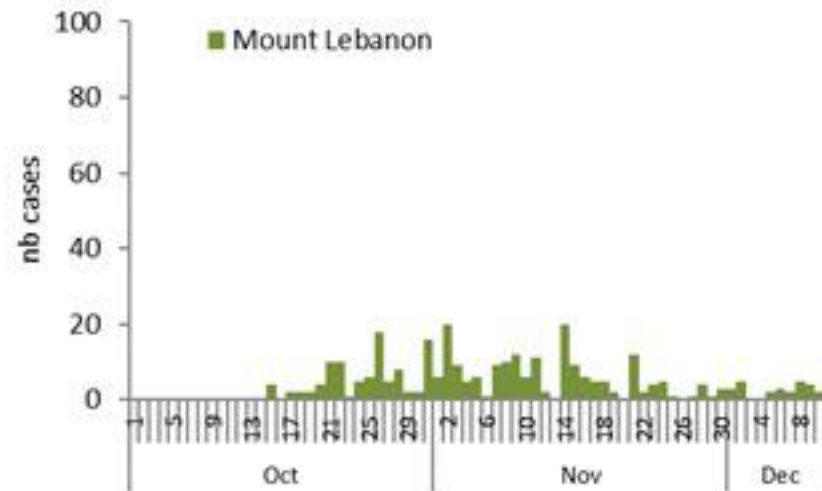
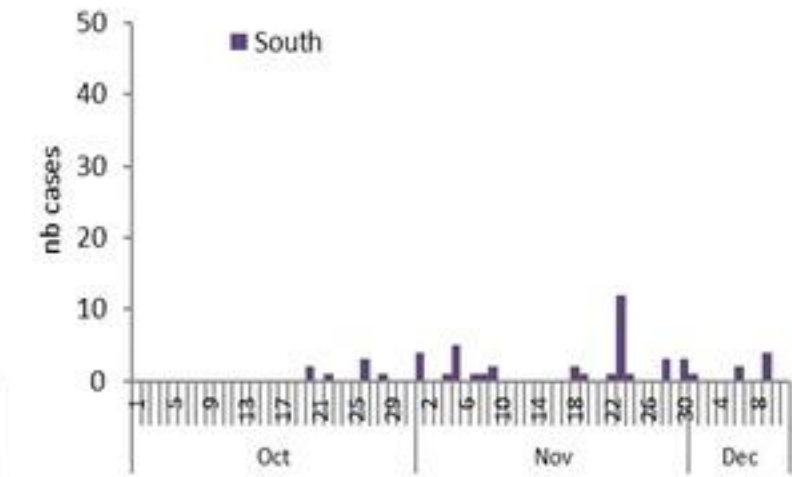
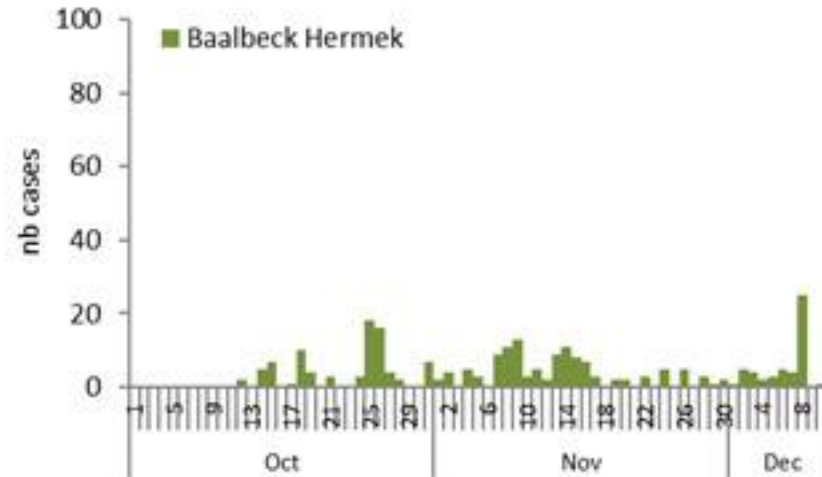
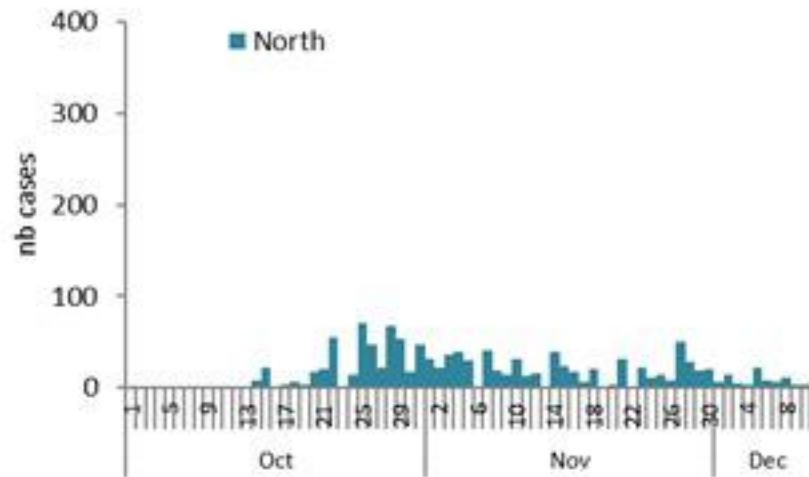
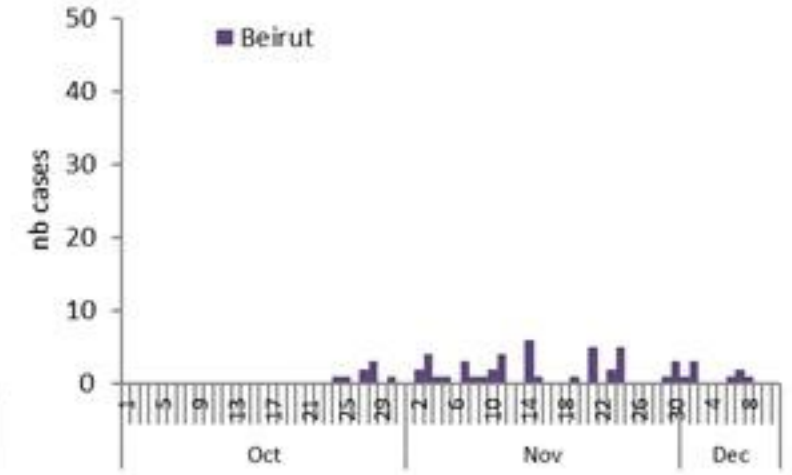
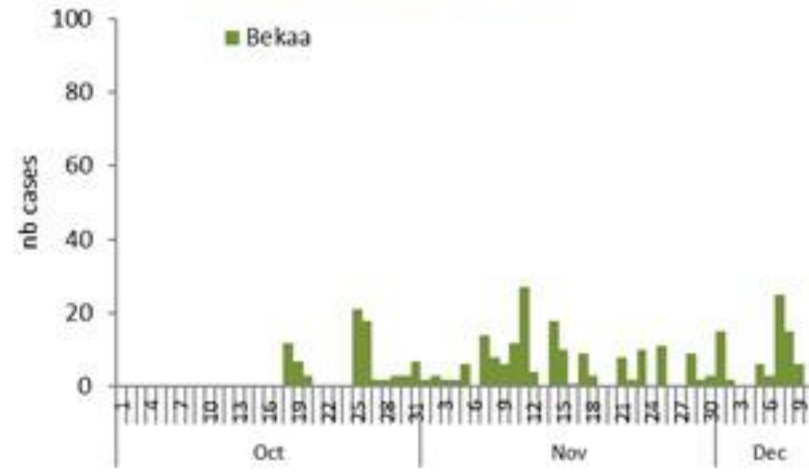
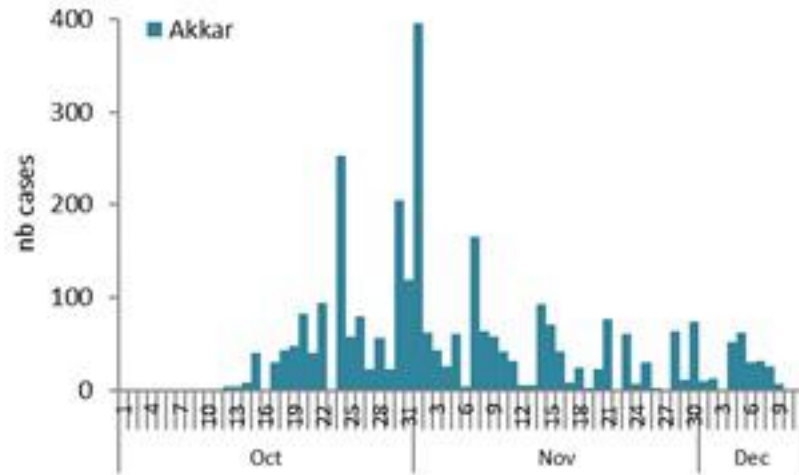
By Outcome  
(suspected and confirmed)





## 12 Dec 2022

Epicurves by date of reporting by province (suspected and confirmed)



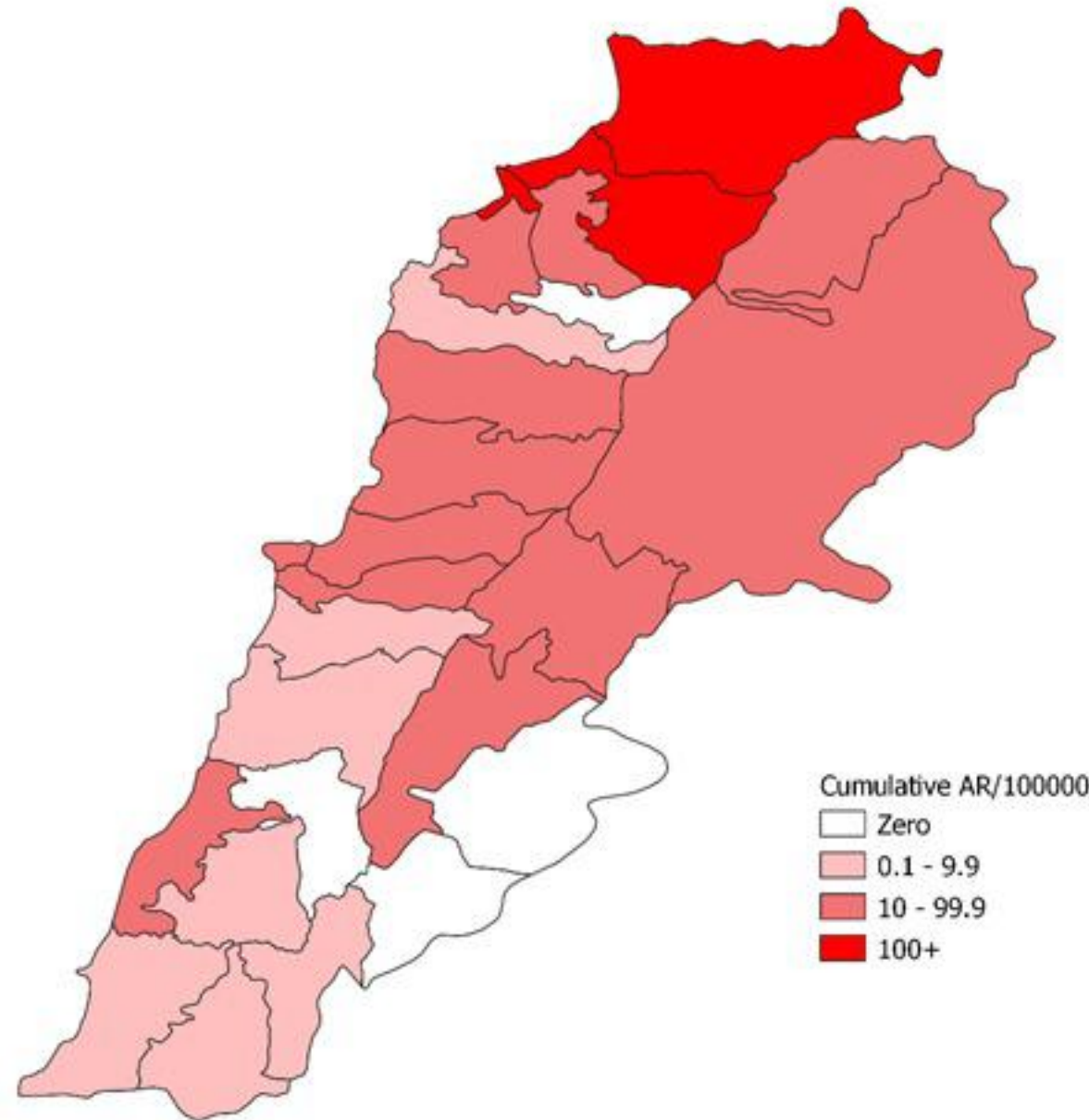
# Cholera Surveillance Update

12 Dec 2022

4

Cumulative Attack Rate per 100,000 (suspected and confirmed)

نسبة الحدوث التراكمية لكل مئة ألف نسمة (الحالات المشتبهية والمثبتة)

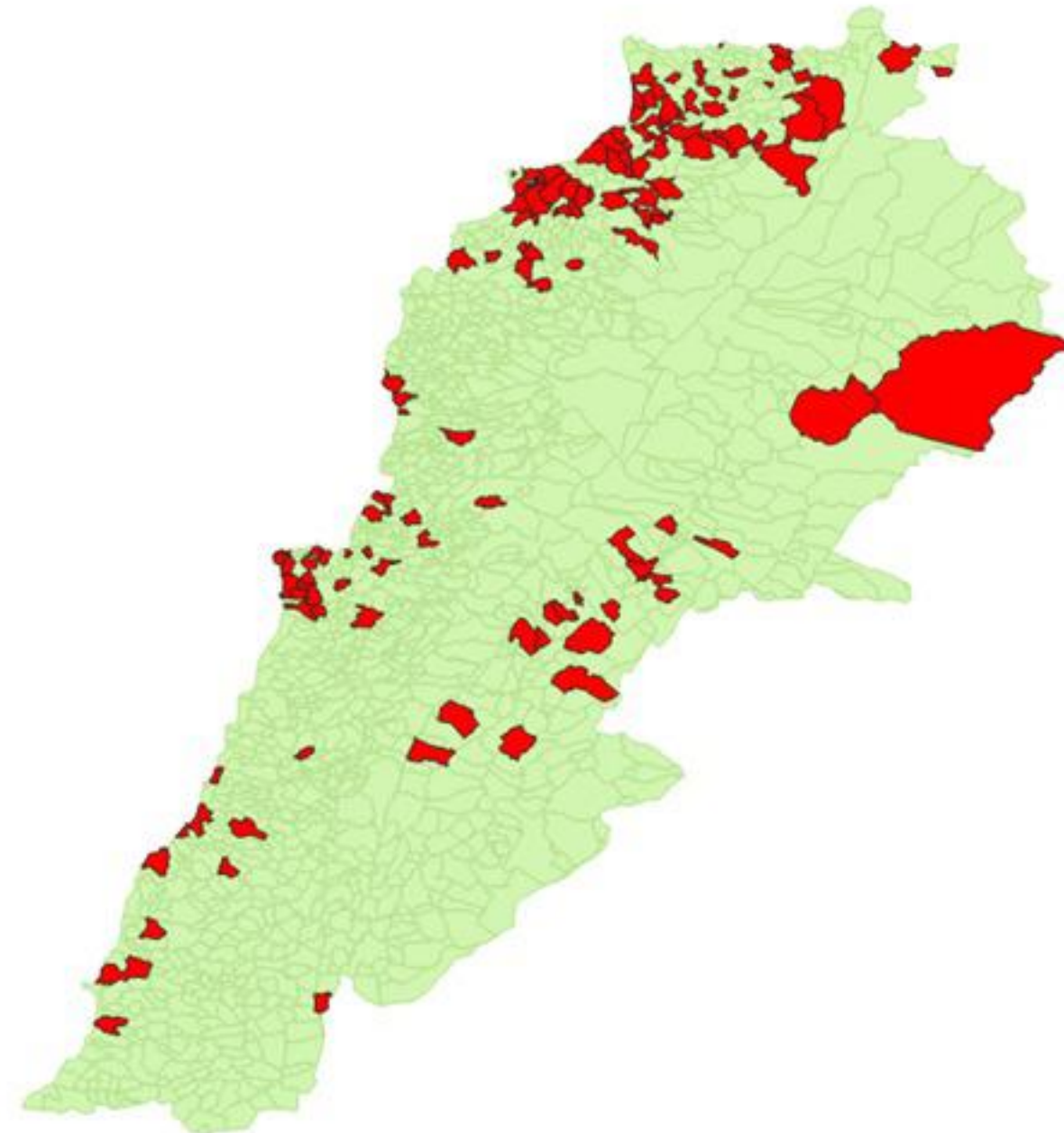




# Cholera Surveillance Update

## 12 Dec 2022

By locality (confirmed)  
حسب البلدة (المتبئة)



Figures in table are subject to modification following updates and data correction

Case	Locality	Cases	Case	Locality	Cases
Akkar	Akkar Atika	1	Kiswan	Aintouna	1
	Amayer/Quadi Khaled	1		Balounsh	1
	Arqa / Marlayet Haddara	1		Bqawtuta	7
	Bebrine / Baddoua	160		Ghair	2
	Beit Hajj/Koucha/Khreibit Jindi	1		Jounieh Ghadir	4
	Berqayel	1		Jounieh Seba	4
	Bezblina	1		Yahchouch	1
	Birch	1		Zouk Mosbeh	3
	Bqerzia	1	Koura	Aaba	1
	Cheikh Ayache / Chir Hmairine	1		Aahdiq	1
	Dahr Qambar /Hokr Qatfeh	1		Bana	1
	Dabadab	1		Bsama	1
	Dinbou	1		Dahr Ain / Ras Masqua	1
	Fneydek	1		Rachdibbine	1
	Halba	1		Kfar Aqa	1
	Hayssa	1	Marjoun	Aadaysah	1
	Hoculch	1	Mata	Bikaya	1
	Jdeidat Qaytee	1		Broummata	1
	Kfar Harra	4		Bsalim	1
	Kfar Melki	1		Daruna/Borj Hamoud	2
	Khane Hayat	1		Mansourieh	3
	Khirbet Char	1		Zafqa	1
	Kneisset Hnaldor	1	Minish Darish	Aadoua	1
	Kouachra	1		Assoun	4
	Koukikhat	1		Ain El Tineh	1
	Machha	1		Bahsa	1
	Majdala	1		Bakhaoun	4
	Memnaa	1		Bhanine / Zouk Bhanine	7
	Mhamarah / Nahr Bared / Abdeh	22		Bamaa	6
	Minlara	1		Dounaya	1
	Mqyatea	1		Kfar Challana	2
	Ouadi Jamous	11		Kfar Habou	1
	Qaabrine / Tal Hayat	7		Marabta	2
	Qbalyat	1		Minish	18
	Qjayat Akkar	2		Ouadiyeh	1
	Qobet Chamra	17		Qatline	3
	Rahbeh	1		Rihanieh	35
	Ransiyeh / Deir Dalloum	1		Sr Dammieh	5
	Saadine	4	Saida	Aanqoun	1
	Tell Abbas Charqui	1		Gharish	2
	Tleil	1		Khawayb	3
	Zouq Haddara	1		Saida	1
	Zouq Hosnieh	1		Sawland	1
Aley	Aley	1	Sour	Abbasiyeh	1
	Hay Selloum/Chouifat	1		Deir Qanoun Ain	4
Baabda	Ain Roummaneh	1		Baddawi	16
	Borj Brajneeh	1		Mina	7
	Ghbayreh/Chiyah/Sabra	1		Qobbah	21
	Hadath	1		Tripoli Bab Raml	1
	Haret Hireik	1		Tripoli Gardens	1
	Kfar Chima	1		Tripoli Haddadine	1
	Mrejijh	1		Tripoli Nouri	1
Baalbeck	Arsal	27		Tripoli Souayqa / Assain	3
	Kfar Dabache	1		Tripoli Tabbaneh	20
	Khodr	1		Tripoli Zaitoun	15
	Temnine Faouqa	1	West Beqaa	Kamel Joz	1
	Temnine Tahta	1		Kuhaya	1
	Younine	1		Saghbine	1
Batroun	Chikka	1	Zahleh	Aali Nahri	2
Beirut	Achrafieh	1		Be Elias	2
	Ain Miralssah	1		Dalhameh	1
	Hamra	1		Harouch Mandra	1
	Mdaouar / Mar Mikhael	1		Hawch Omara	7
	Msaitbeh	1		Majdal Anjar	1
Chouf	Zaarouriyeh	1		Qob Elias	9
Jbeil	Amchit	1		Raet	11
	Ehmej	1		Saadnayd	11
	Jbeil	1		Tadabaya	2
	Mastita	1		Zahleh Madaba	2
			Zghorta	Aalma	1
				Ardah	1
				Kfar Diqous	2
				Majdalya Zghorta	6
				Mirata / Faour	3
				Sabaa	1
				Zghorta	4