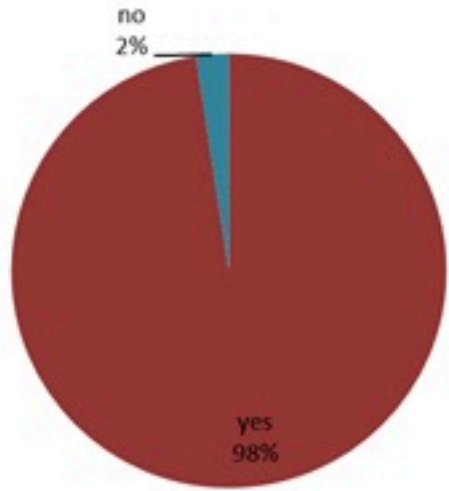


## الخطوط الساخنة

1760 (الصليب الأحمر)  
1787 (وزارة الصحة)

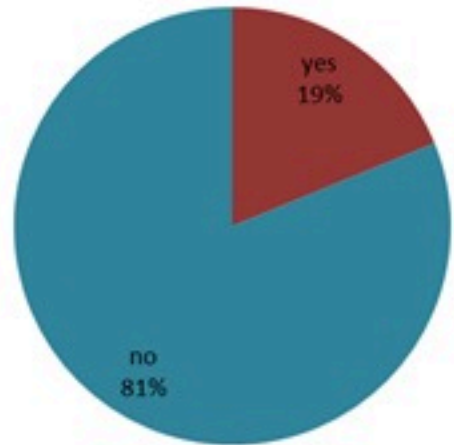
# ترصد الكوليرا في لبنان 12 تشرين الثاني 2022

الجمهورية اللبنانية  
وزارة الصحة العامة  
برنامج الترصد الوبائي



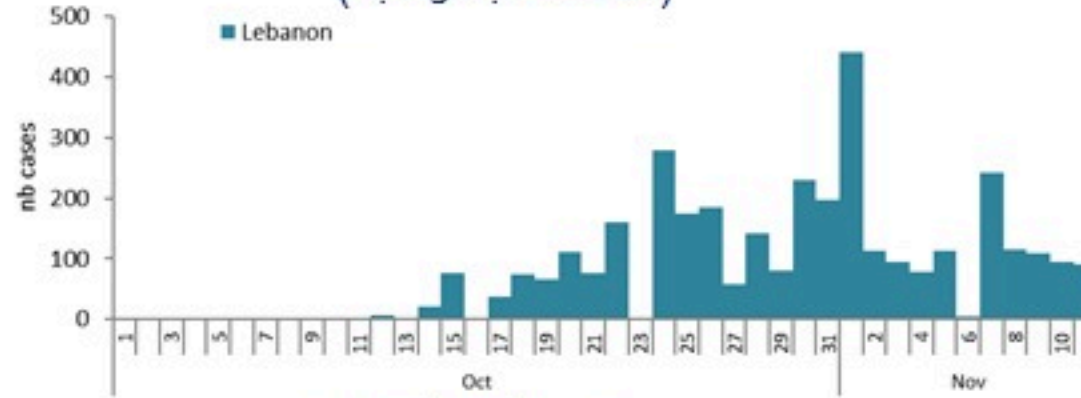
حسب ظهور العوارض (المشبهة والمثبتة)

الوفيات (المثبتة)		الحالات المثبتة		كافة الحالات (المثبتة والمشبهاة)	
التراكمي	الجديدة (آخر 24 ساعة)	التراكمي	الجديدة (آخر 24 ساعة)	التراكمي	الجديدة (آخر 24 ساعة)
18	0	532	11	3340	87

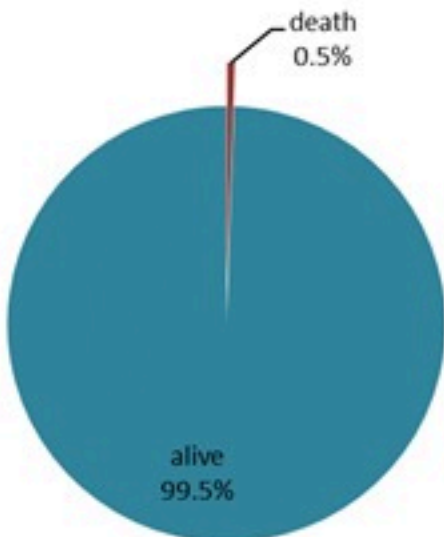


حسب الاستشفاء (المشبهة والمثبتة)

حسب تاريخ الإبلاغ (للحالات المثبتة والمشبهاة)

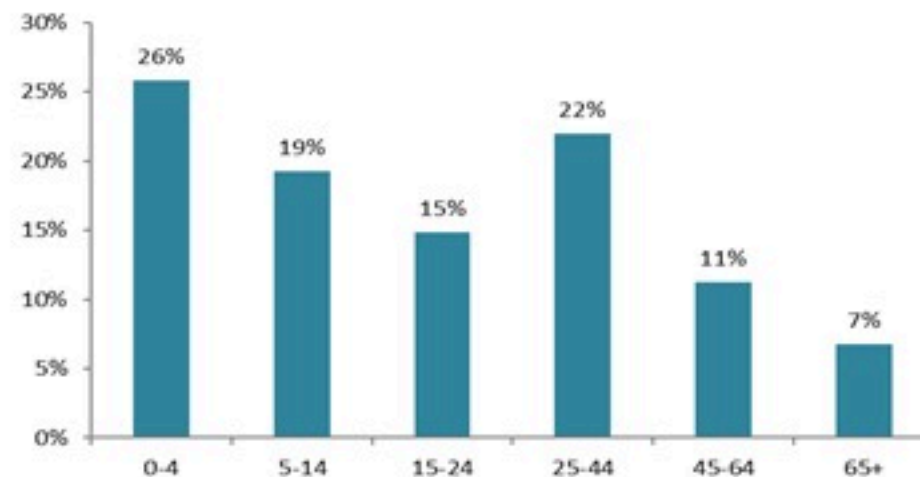


عدد الاسرة المستعملة (للحالات المشبهاة والمثبتة)  
60



حسب تطور الحالة (المشبهة والمثبتة)

حسب الفئة العمرية (للحالات المثبتة والمشبهاة)



حسب البلدة (للحالات المثبتة)



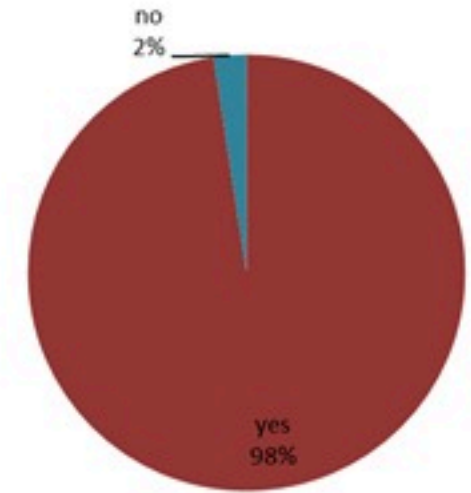
# Cholera Surveillance Report

## 12 Nov 2022

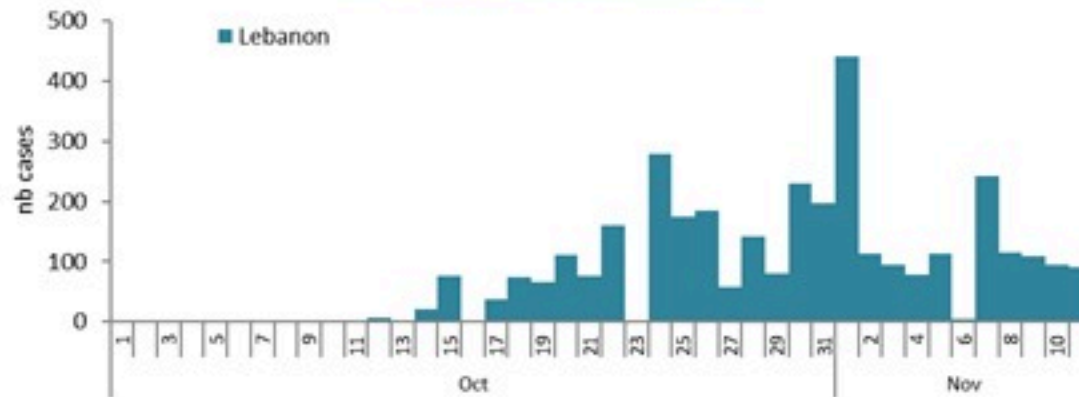
**Call Centers**  
 1760 (Red Cross)  
 1787 (MOPH)

All cases (suspected and confirmed)		Confirmed Cases		Deaths (confirmed)	
New (past 24 h)	Cumulative	New (past 24 h)	Cumulative	New	Cumulative
87	3340	11	532	0	18

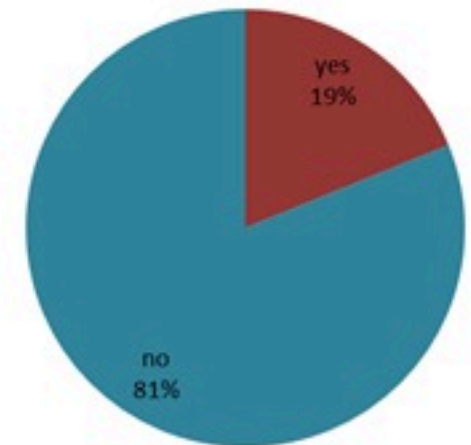
By Presence of Illness  
(suspected and confirmed)



By date of report  
(suspected and confirmed)



By Hospital Admission  
(suspected and confirmed)

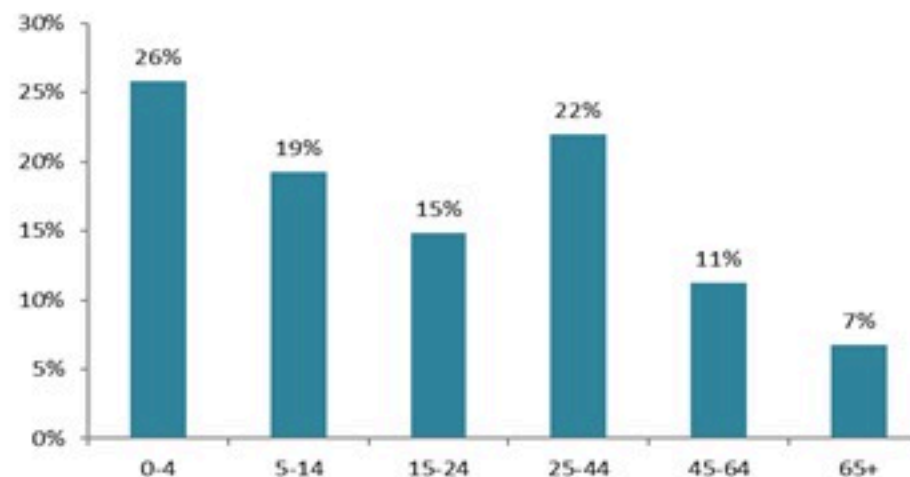


**Total occupied beds  
(suspected/confirmed)**  
**60**

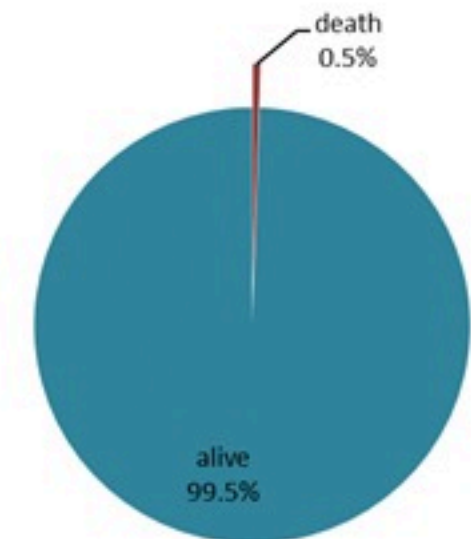
By locality (confirmed cases)



By age group  
(suspected and confirmed cases)



By Outcome  
(suspected and confirmed)

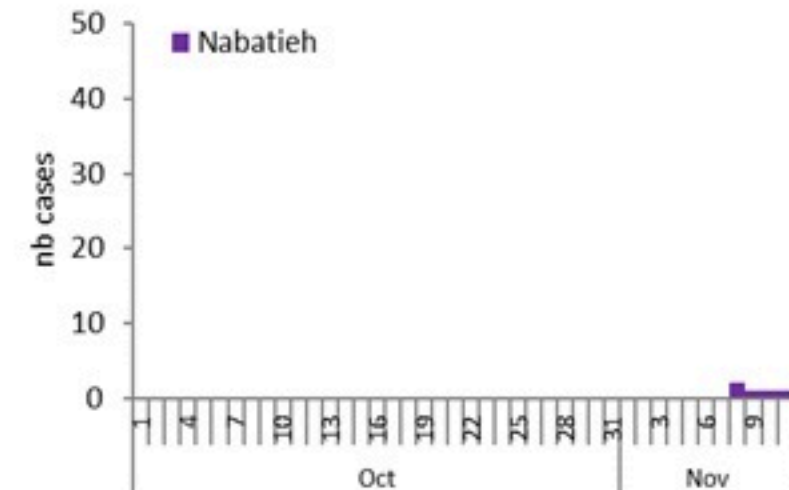
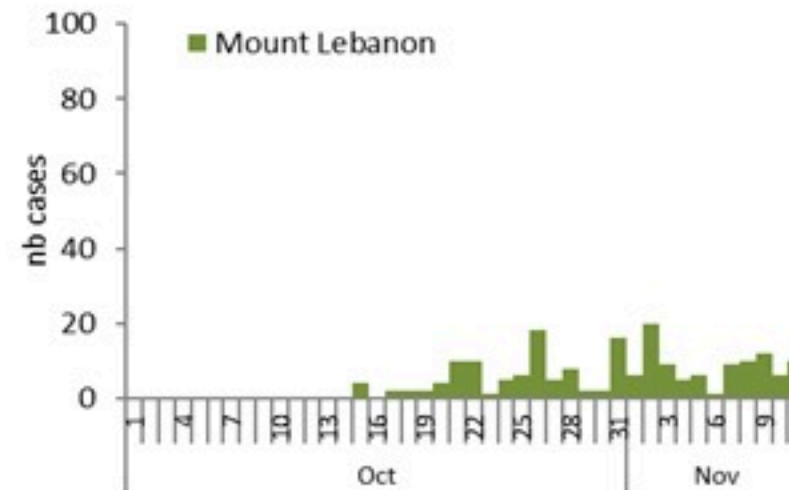
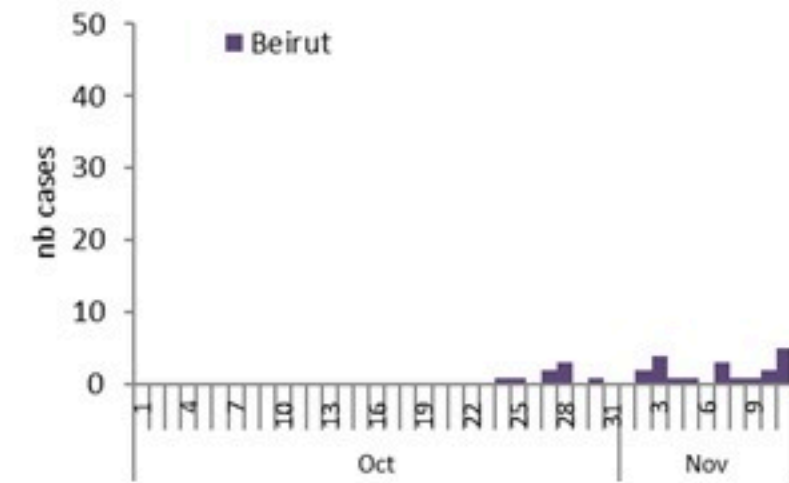
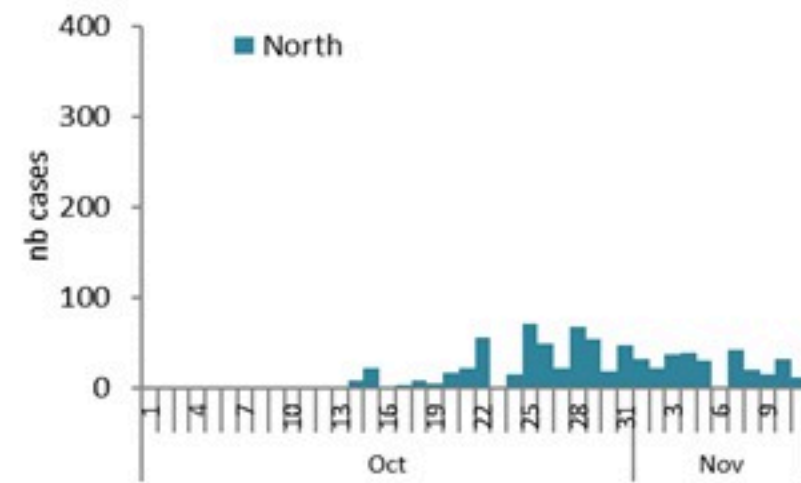
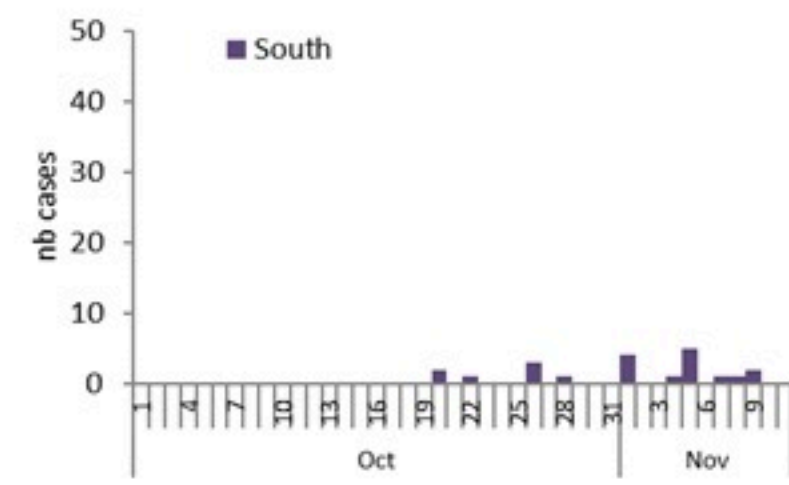
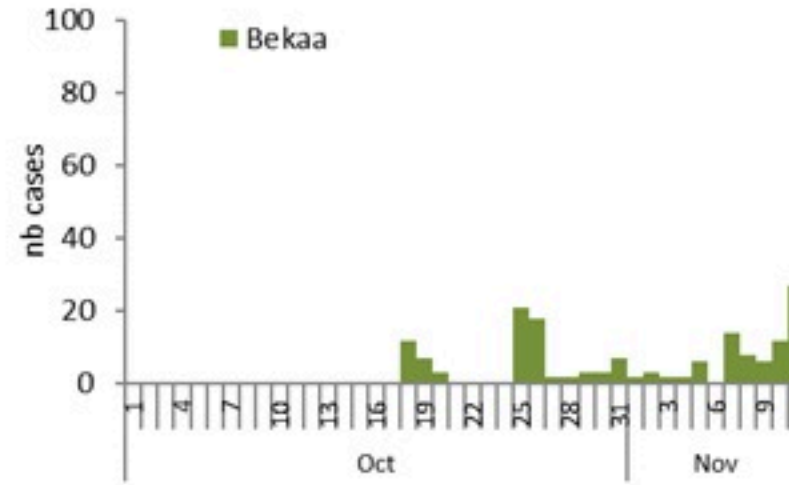
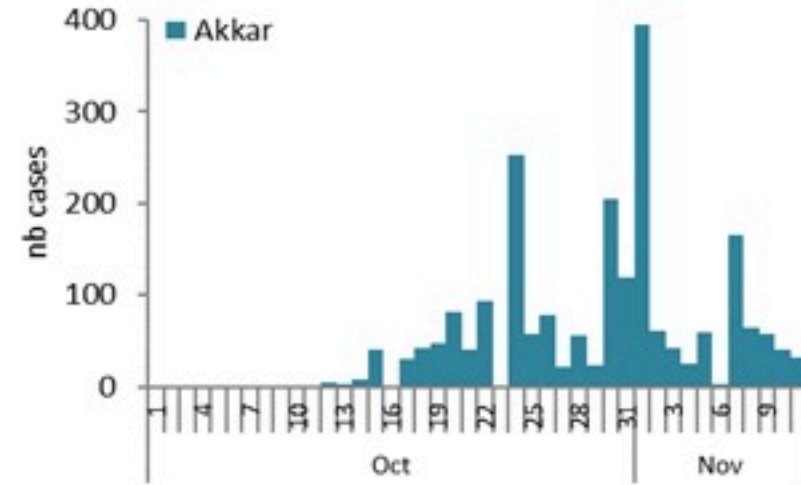




# Cholera Surveillance Report

## 12 Nov 2022

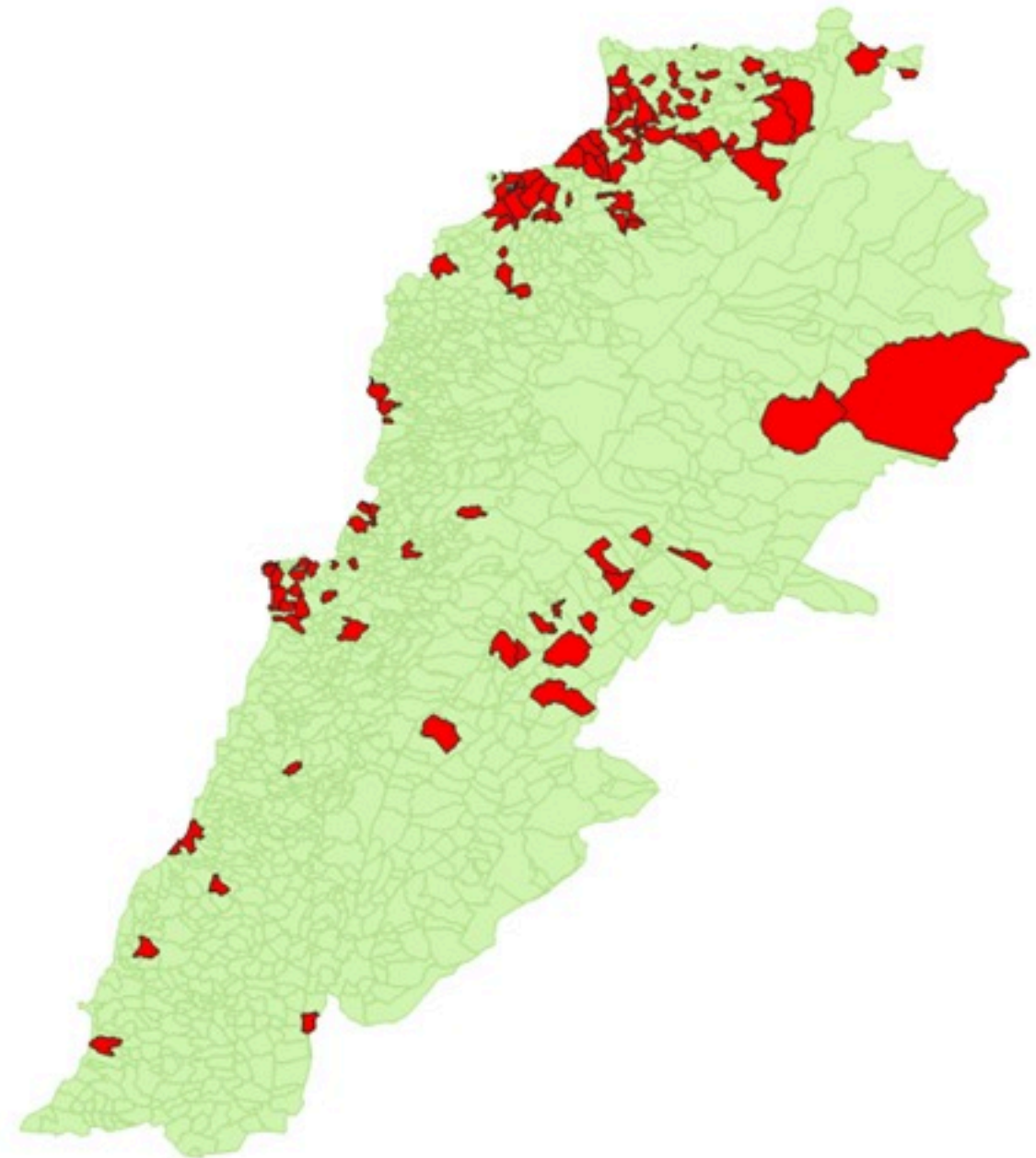
Epicurves by date of reporting by province



# Cholera Surveillance Update

## 12 Nov 2022

By locality (confirmed)  
حسب البلدة (المتبنة)



Figures in table are subject to modification following updates and data correction

Caza	Locality	cases	Caza	Locality	cases
Akkar	Akkar Atika	1	Jbeil	Amchit	1
	Amayer/Ouadi Khaled	1		Ehmej	1
	Arqa / Marlayet Haddara	2		Jbeil	1
	Bebnine / Baddoua	137		Mastita	2
	Beit Hajj/Koucha/Khrebit Jindi	3	Kesrwan	Aintoura	1
	Berqayel	4		Bqaatouta	6
	Bezrina	1		Ghazir	2
	Bireh	2		Jounieh Ghadir	4
	Bqerzla	1		Jounieh Sarba	4
	Cheikh Ayache / Chir Hmairine	3		Zouk Mosbeh	3
	Dahr Qambar /Hokr Qatteh	2	Koura	Aaba	1
	Fneydek	1		Barsa	1
	Halba	1		Dahr Ain / Ras Masqua	1
	Hayssa	1		Rechdibbine	1
	Hoeuich	3		Kfar Aqa	1
	Jdeidat Qaytee	3	Marjeoun	Aadaysseh	1
	Kfar Harra	4	Metn	Bikfaya	1
	Kfar Melki	1		Bsalim	1
	Khirbet Char	2		Daoura/Borj Hammoud	2
	Kneisset Hnaider	1		Mansourieh	2
	Kouachra	1		Zalqa	1
	Koueikhat	2	Minieh Danieh	Aadoua	1
	Machha	2		Assoun	5
	Majdala	2		Bahsa	1
	Memneaa	1		Bakhaaoun	4
	Mhamarah / Nahr Bared / Abdeh	11		Bhanine / Zouk Bhanine	6
	Miniara	3		Kfar Chellane	2
	Mqyatea	1		Merkebta	2
	Ouadi Jamous	7		Minieh	14
	Qaabrine / Tal Hayat	7		Ouatiyeh	1
	Qbaiyat	1		Qattine	2
	Qjayat Akkar	2		Rihanieh	33
	Qobet Chamra	14		Sir Dannieh	2
	Rahbeh	1	Nabatieh	Zafta	1
	Ransiyeh / Deir Dalloum	1	Saida	Ghazieh	2
	Saadine	4		Kharayeb	3
	Tell Abbas Charqui	2	Sour	Deir Qanoun Ain	4
	Tleil	1		Baddawi	11
	Zouq Haddara	1		Mina	3
	Zouq Hosnieh	3		Qobbah	16
Aley	Aley	1	Tripoli	Tripoli Gardens	1
	Hay Selloum/Choueifat	1		Tripoli Haddadine	1
Baabda	Borj Brajneh	3		Tripoli Nouri	1
	Ghbayreh/Chiyah	1		Tripoli Souayqa / Jisrain	3
	Hadath	2		Tripoli Tabbaneh	17
Baalbeck	Arsal	27		Tripoli Zeitoun	3
	Kfar Dabache	2	West Beqaa	Kefraya	1
	Khadr	1	Zahleh	Bar Elias	2
	Temnine Faouqa	1		Dalhameh	1
	Temnine Tahta	9		Haouch Mandra	1
	Younine	1		Hawch Omara	7
Batroun	Chikka	1		Majdal Anjar	1
Beirut	Achrafieh	2		Qob Elias	9
	Ain Mraisseh	1		Raait	8
	Hamra	1		Saadnayel	11
	Mdaouar / Mar Mikhael	1		Zahleh Maalaka	2
	Msaitbeh	1	Zghorta	Aalma	1
Chouf	Zaarouriyeh	1		Kfar Dlaqous	1
				Mejdalya Zghorta	6
				Miriata	2
				Zghorta	3