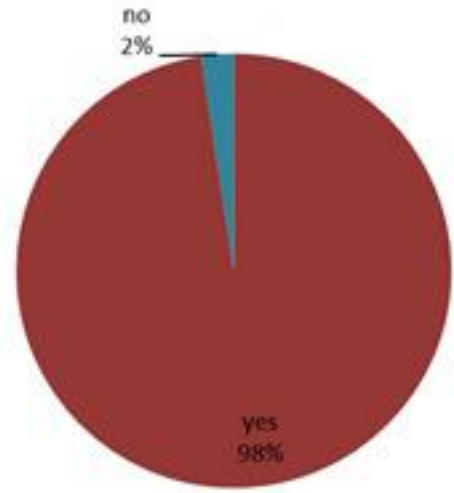
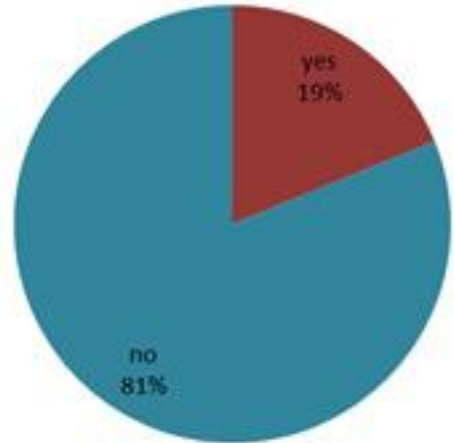


الخطوط الساخنة

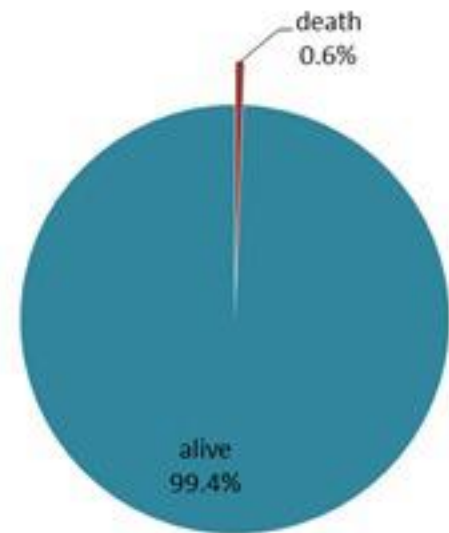
1760 (الصليب الأحمر)
1787 (وزارة الصحة)



حسب ظهور
العوارض
(المشبهة والمثبتة)



حسب الاستشفاء
(المشبهة والمثبتة)



حسب تطور
الحالة
(المشبهة والمثبتة)

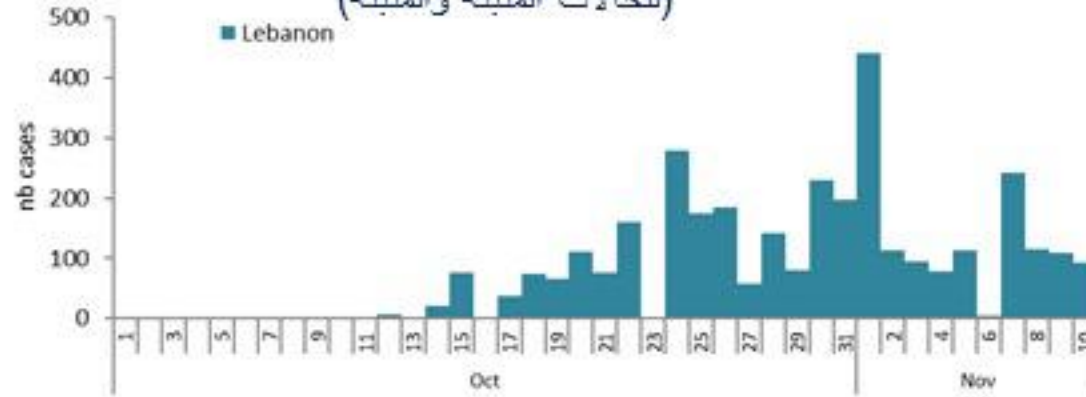
ترصد الكوليرا في لبنان 11 تشرين الثاني 2022

الجمهورية اللبنانية
وزارة الصحة العامة
برنامج الترصد الوبائي



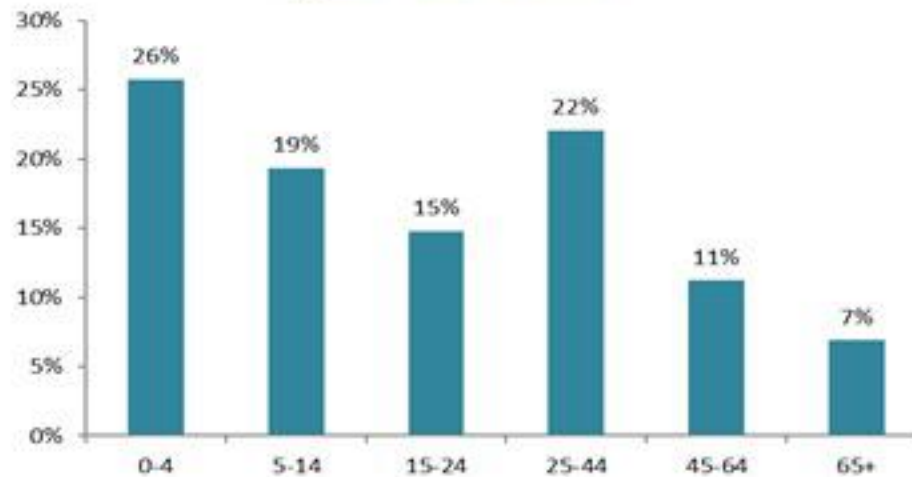
الوفيات (المثبتة)		الحالات المثبتة		كافة الحالات المثبتة والمثبتة	
التراكمي	الجديدة (آخر 24 ساعة)	التراكمي	الجديدة (آخر 24 ساعة)	التراكمي	الجديدة (آخر 24 ساعة)
18	0	521	10	3253	93

حسب تاريخ الإبلاغ
(للحالات المثبتة والمثبتة)



عدد الاسرة
المستعملة
للحالات المشبهة
والمثبتة
62

حسب الفئة العمرية



حسب البلدة
(للحالات المثبتة)



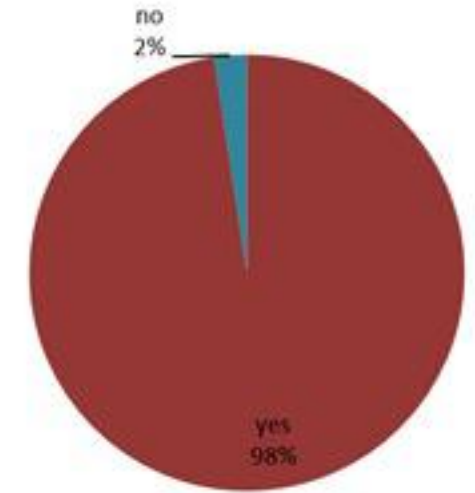
Cholera Surveillance Report

11 Nov 2022

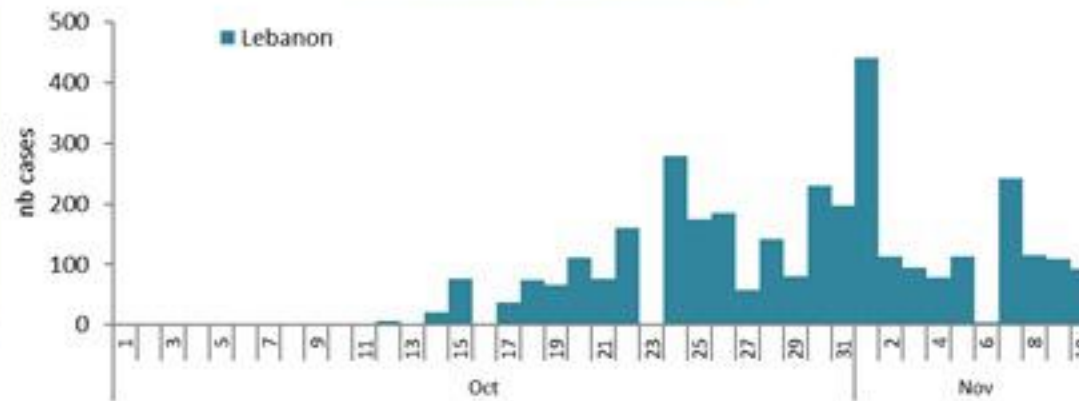
Call Centers
 1760 (Red Cross)
 1787 (MOPH)

All cases (suspected and confirmed)		Confirmed Cases		Deaths (confirmed)	
New (past 24 h)	Cumulative	New (past 24 h)	Cumulative	New	Cumulative
93	3253	10	521	0	18

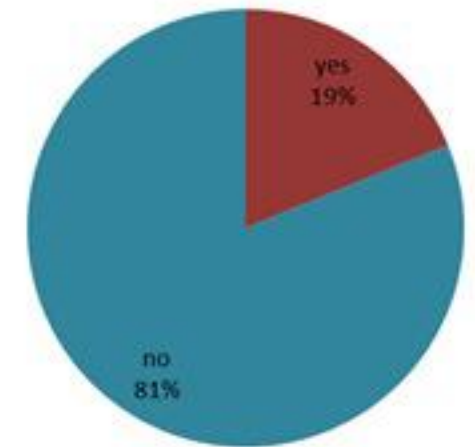
By Presence of Illness
(suspected and confirmed)



By date of report
(suspected and confirmed)



By Hospital Admission
(suspected and confirmed)

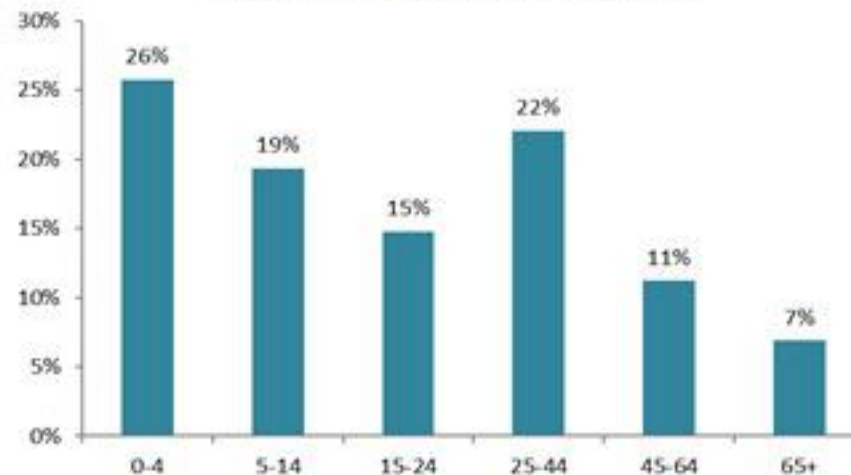


**Total occupied beds
(suspected/confirmed)**
62

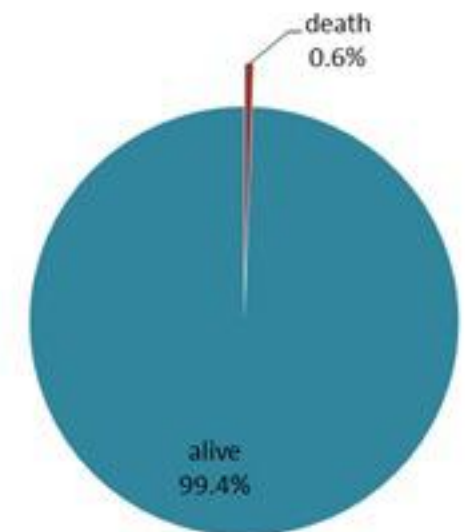
By locality (confirmed cases)



By age group
(suspected and confirmed cases)



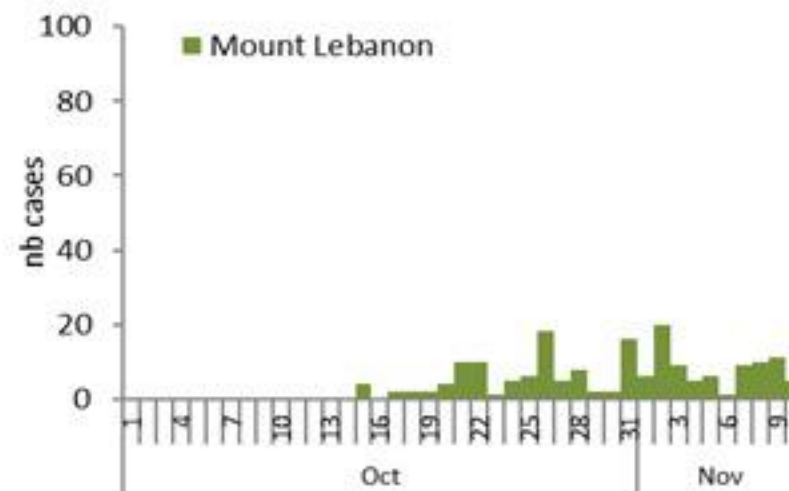
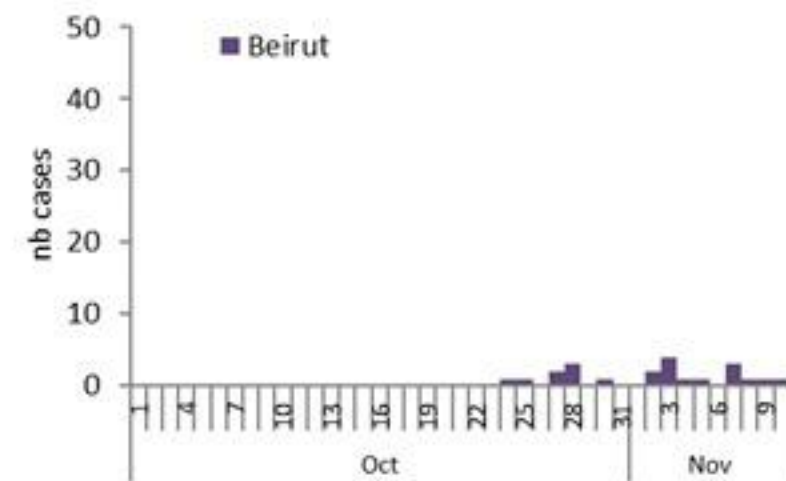
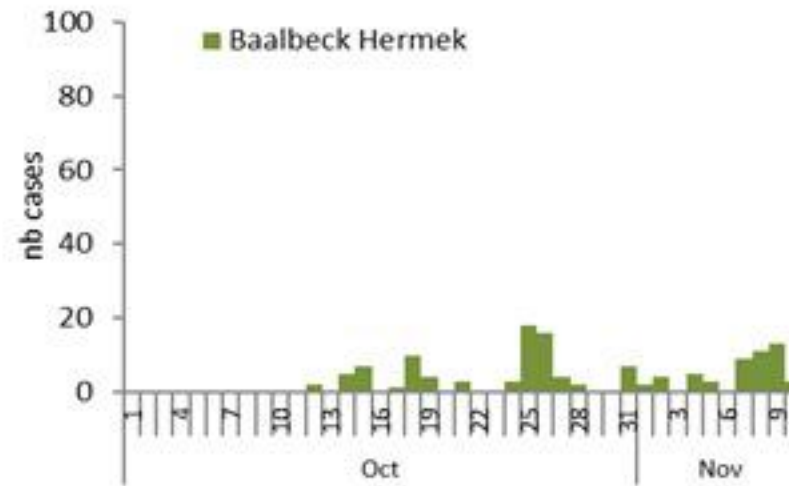
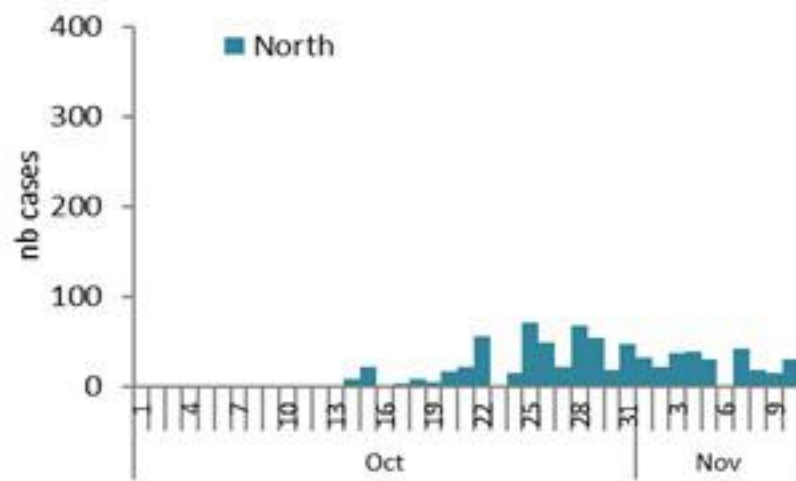
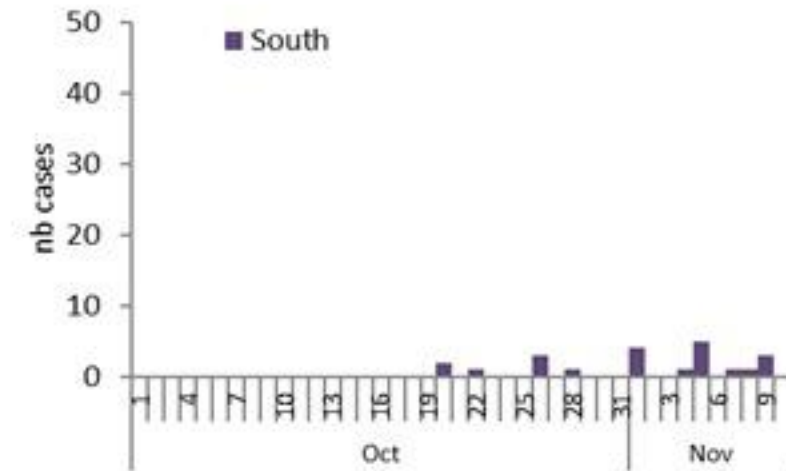
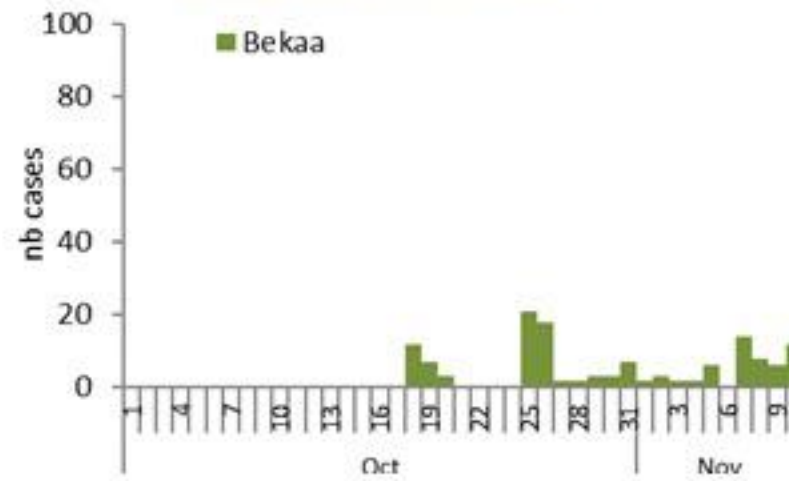
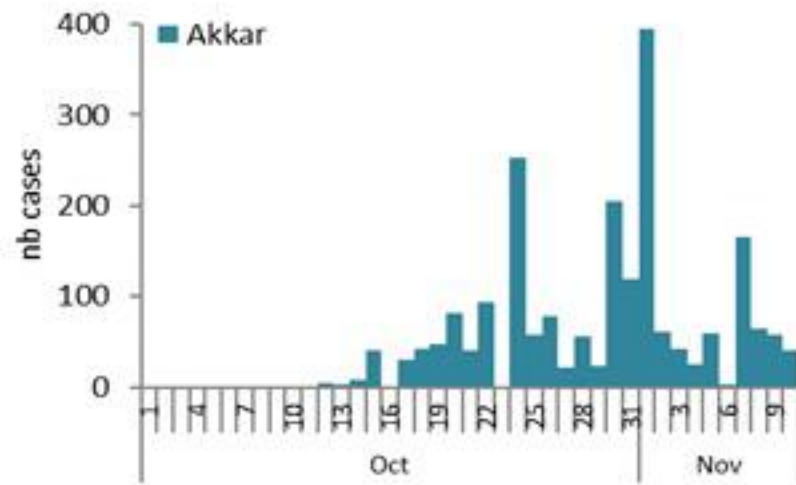
By Outcome
(suspected and confirmed)



Cholera Surveillance Report

11 Nov 2022

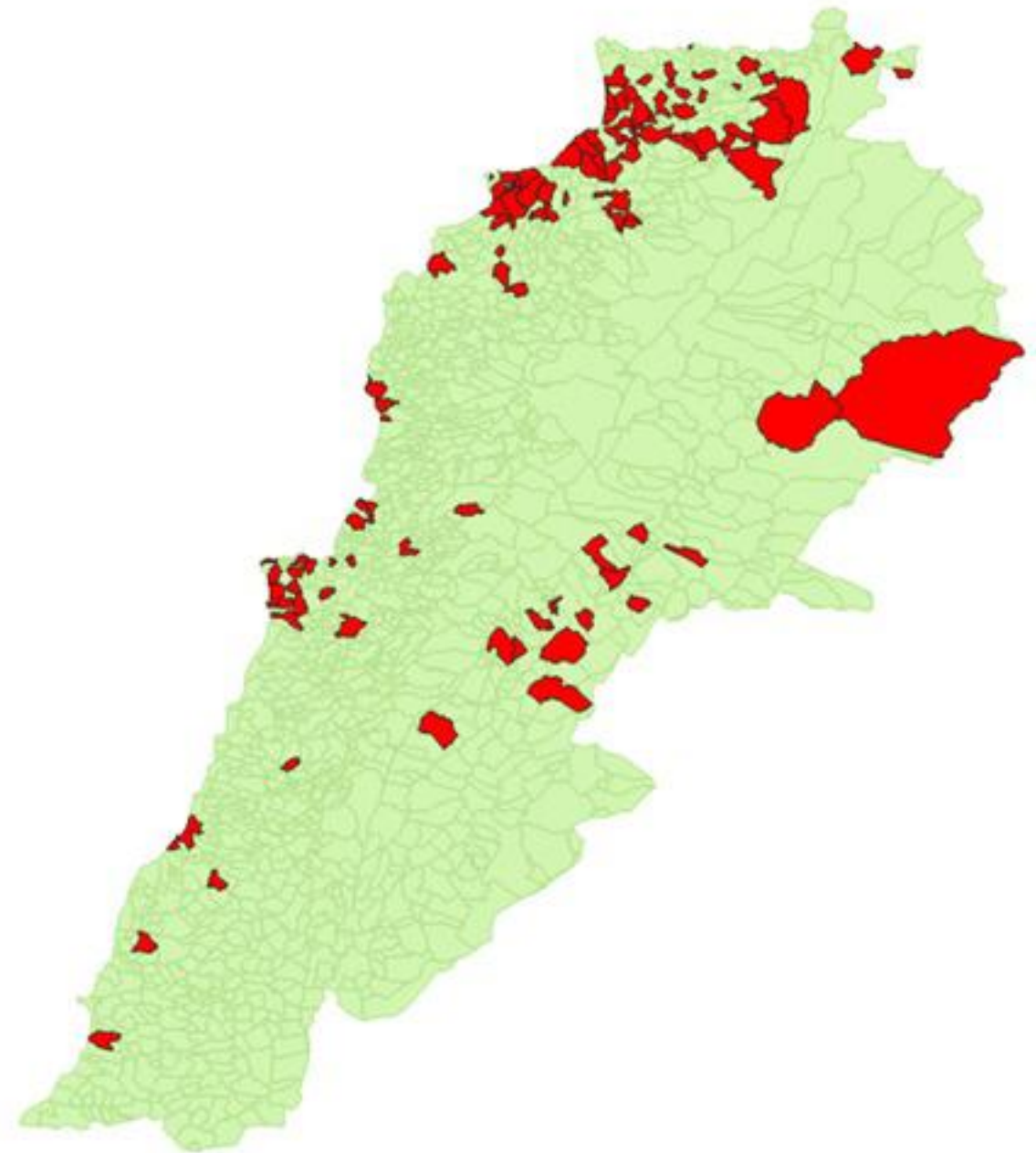
Epicurves by date of reporting by province
(suspected and confirmed)



Cholera Surveillance Update

11 Nov 2022

By locality (confirmed)
حسب البلدة (المتبنة)



Figures in table are subject to modification following updates and data correction

Caza	Locality	cases	Caza	Locality	cases	
Akkar	Akkar Atika	1	Jbeil	Amchit	1	
	Amayer/Ouadi Khaled	1		Ermej	1	
	Arqa / Marlayet Haddara	2		Jbeil	1	
	Bebnine / Baddoua	130		Mastita	2	
	Beit Hajj/Koucha/Khreibit Jindi	3		Keswan	Aintoura	1
	Berqayel	4			Bqaatouta	6
	Bezbina	1			Ghazir	2
	Bireh	2			Jounieh Ghadir	4
	Bqerzla	1	Jounieh Sarba		4	
	Cheikh Ayache / Chir Hmairine	3	Zouk Mosbeh		3	
	Dahr Qambar /Hokr Qatfeh	2	Koura		Aaba	1
	Fneydek	1		Barsa	1	
	Halba	1		Dahr Ain / Ras Masqua	1	
	Hayssa	1		Rechdibbine	1	
	Hoouich	3		Kfar Aqa	1	
	Jdeidat Qaytee	2		Metn	Bikfaya	1
	Kfar Harra	4			Bsalim	1
	Kfar Melki	1	Daoura/Borj Hammoud		2	
	Khirbet Char	2	Mansourieh		2	
	Kneisset Hnaider	1	Zalqa		1	
	Kouachra	1	Minieh Danieh		Aadoua	1
	Koueikhat	2			Assoun	5
	Machha	2		Bahsa	1	
	Majdala	2		Bakhaadoun	3	
	Memneaa	1		Bhanine / Zouk Bhanine	6	
	Mhamarah / Nahr Bared / Abdeh	11		Kfar Chellane	2	
	Miniara	3		Merkebta	2	
	Mqyatea	1		Minieh	14	
	Ouadi Jamous	7		Ouatiyeh	1	
	Qaabrine / Tal Hayat	7		Qattine	2	
	Qbaiyat	1		Rihanieh	33	
	Qjayat Akkar	2		Sir Dannieh	2	
	Qobet Chamra	14		Nabatieh	Zafta	1
	Rahbeh	1			Saida	Ghazieh
	Ransiyeh / Deir Dalloum	1	Kharayeb	3		
	Saadine	4	Sour	Deir Qanoun Ain	4	
	Tell Abbas Charqui	2		Baddawi	11	
	Tleil	1	Mina	3		
	Zouq Haddara	1	Qabbeh	16		
	Zouq Hosnieh	3	Tripoli	Tripoli Gardens	1	
Aley	Aley	1		Tripoli Haddadine	1	
	Hay Selloum/Choueifat	1		Tripoli Nouri	1	
Baabda	Borj Brajneh	3		Tripoli Souayqa / Jisrain	3	
	Ghbayreh/Chiyah	1		Tripoli Tabbaneh	15	
Baalbeck	Hadath	2		Tripoli Zeitoun	3	
	Arsal	27		West Beqaa	Kefraya	1
	Kfar Dabache	2	Zahleh		Bar Elias	2
	Khodr	1		Dalhamieh	1	
	Temnine Faouqa	1		Haouch Mandra	1	
Temnine Tahta	9	Hawch Omara		7		
Younine	1	Majdal Anjar		1		
Batroun	Chikka	1		Qob Elias	9	
	Beirut	Achrafieh		2	Raait	8
Ain Mraisseh		1		Saadnayeel	11	
Mdaouar / Mar Mikhael		1		Zahleh Maalaka	2	
Msaitbeh		1		Zghorta	Aalma	1
Chouf	Beqaata	1			Kfar Dlaqous	1
	Zaarouriyeh	1	Mejdalya Zghorta		6	
			Miniata		4	
			Zghorta	3		