

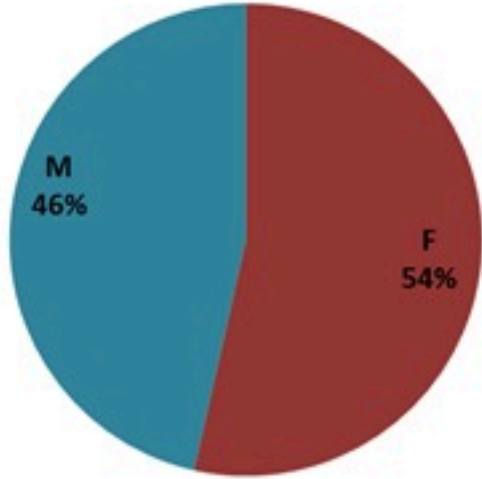
# ترصد الكوليرا في لبنان 30 اذار 2023

الجمهورية اللبنانية  
وزارة الصحة العامة  
برنامج الترصد الوبائي



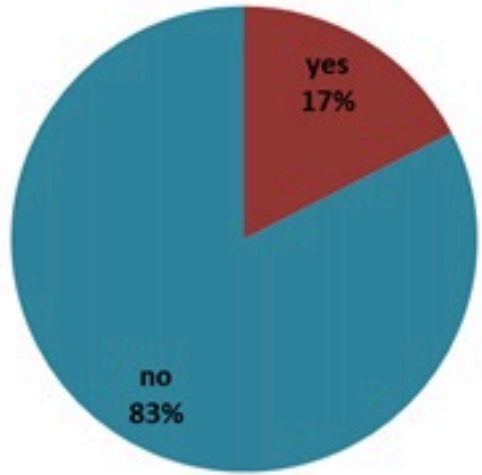
## الخطوط الساخنة

1760 (الصليب الأحمر)  
1787 (وزارة الصحة)



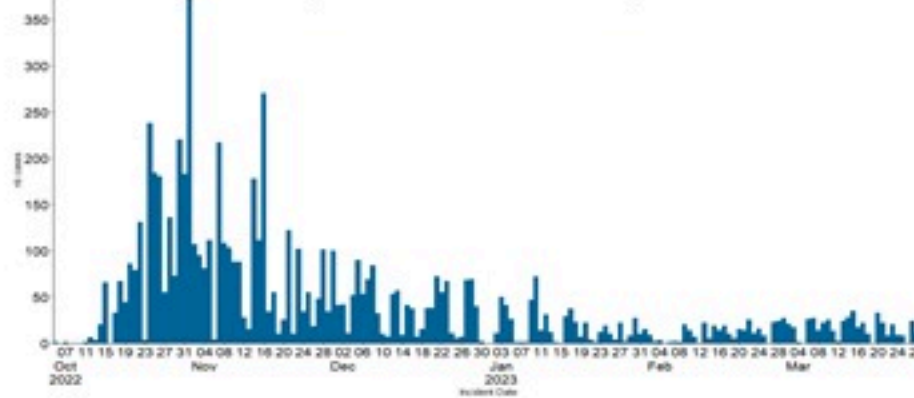
حسب الجنس  
(المشبهة والمتبنة)

الوفيات (المتبنة)		الحالات المتبنة		كافة الحالات المشبهة والمتبنة	
التراكمي	الجديدة (آخر 24 ساعة)	التراكمي	الجديدة (آخر 24 ساعة)	التراكمي	الجديدة (آخر 24 ساعة)
23	0	671	0	7180	19

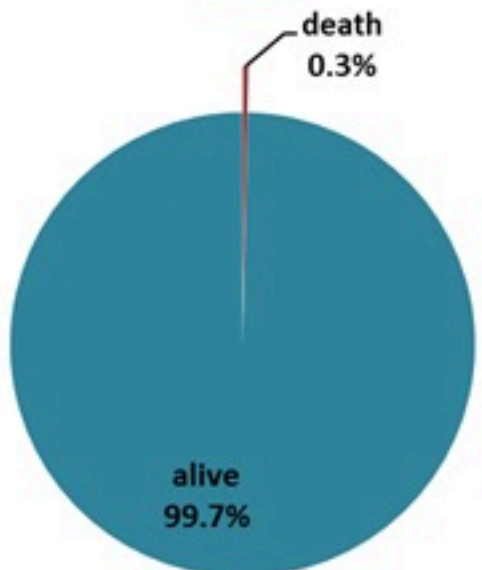
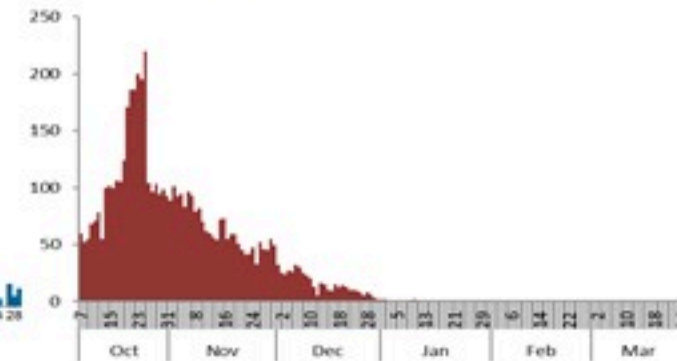


حسب الاستشفاء  
(المشبهة والمتبنة)

حسب تاريخ الإبلاغ  
(للحالات المتبنة والمتبنة)

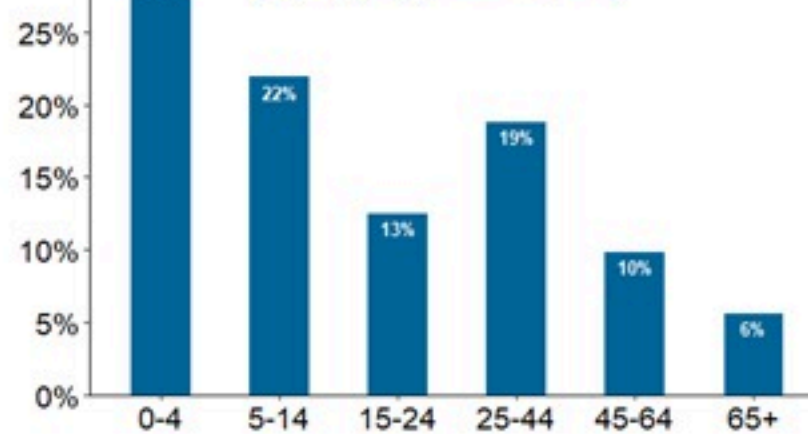


استعمال الاسره الاستشفائية  
(للحالات المتبنة والمتبنة)



حسب تطور  
الحالة  
(المشبهة والمتبنة)

حسب الفئة العمرية  
(للحالات المشبهة والمتبنة)



حسب البلده  
(للحالات المتبنة)



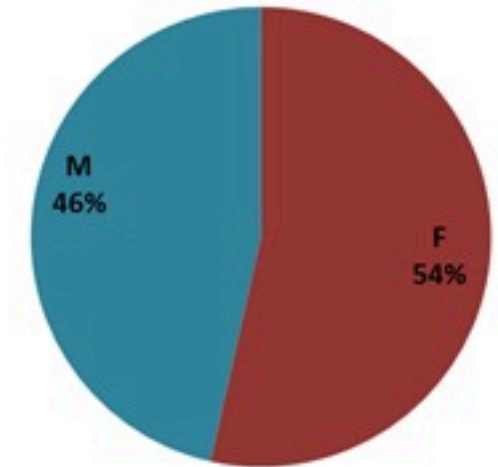
# Cholera Surveillance Report

## 30 Mar 2023

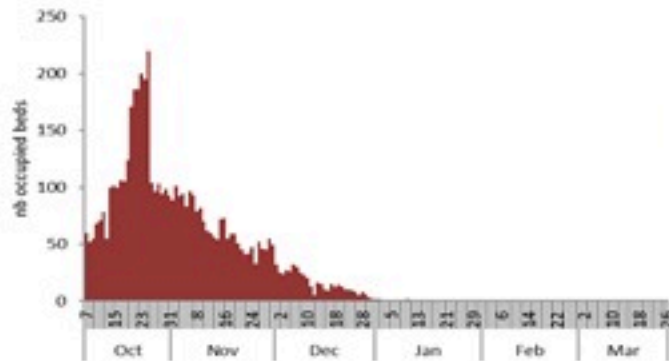
**Call Centers**  
 1760 (Red Cross)  
 1787 (MOPH)

All cases (suspected and confirmed)		Confirmed Cases		Deaths (confirmed)	
New (past 24 h)	Cumulative	New (past 24 h)	Cumulative	New	Cumulative
<b>19</b>	<b>7180</b>	<b>0</b>	<b>671</b>	<b>0</b>	<b>23</b>

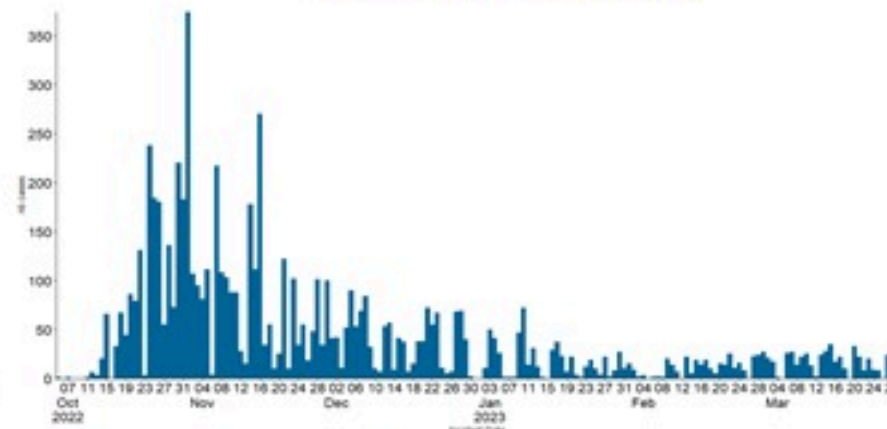
By Sex  
(suspected and confirmed)



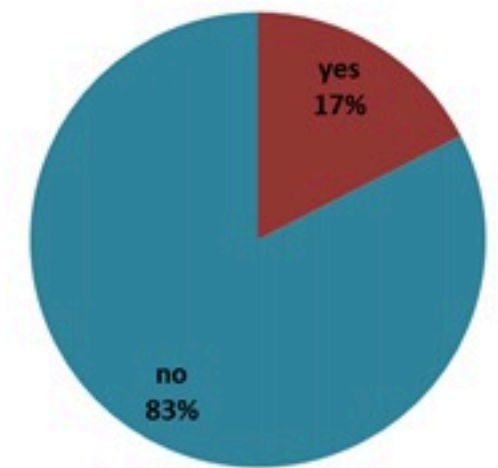
Occupied hospital beds  
(suspected and confirmed)



By date of report  
(suspected and confirmed)



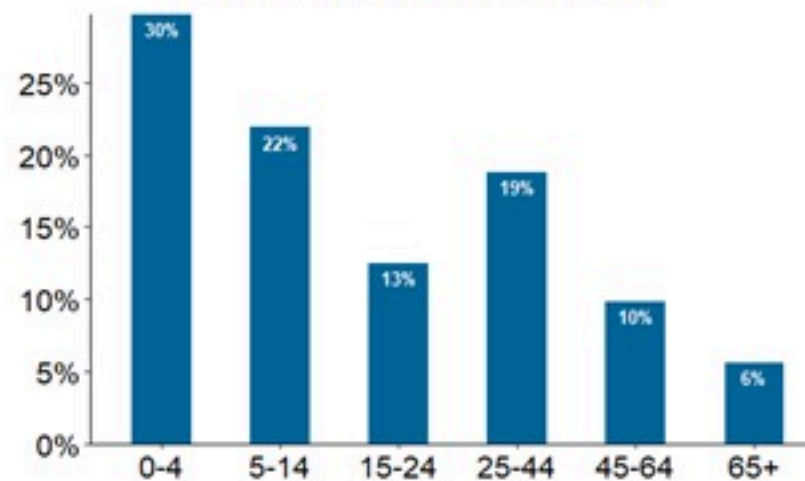
By Hospital Admission  
(suspected and confirmed)



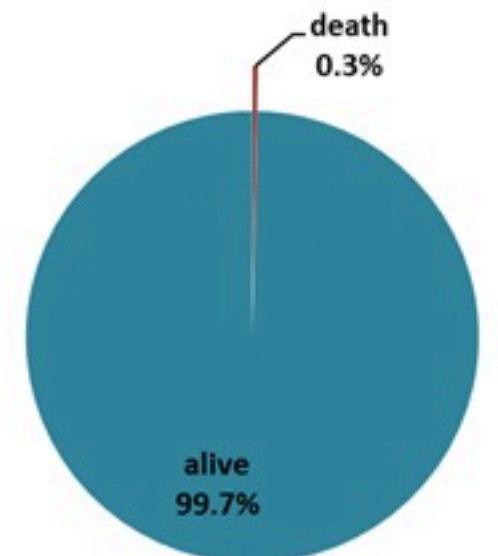
By locality (confirmed cases)



By age group  
(suspected and confirmed cases)



By Outcome  
(suspected and confirmed)

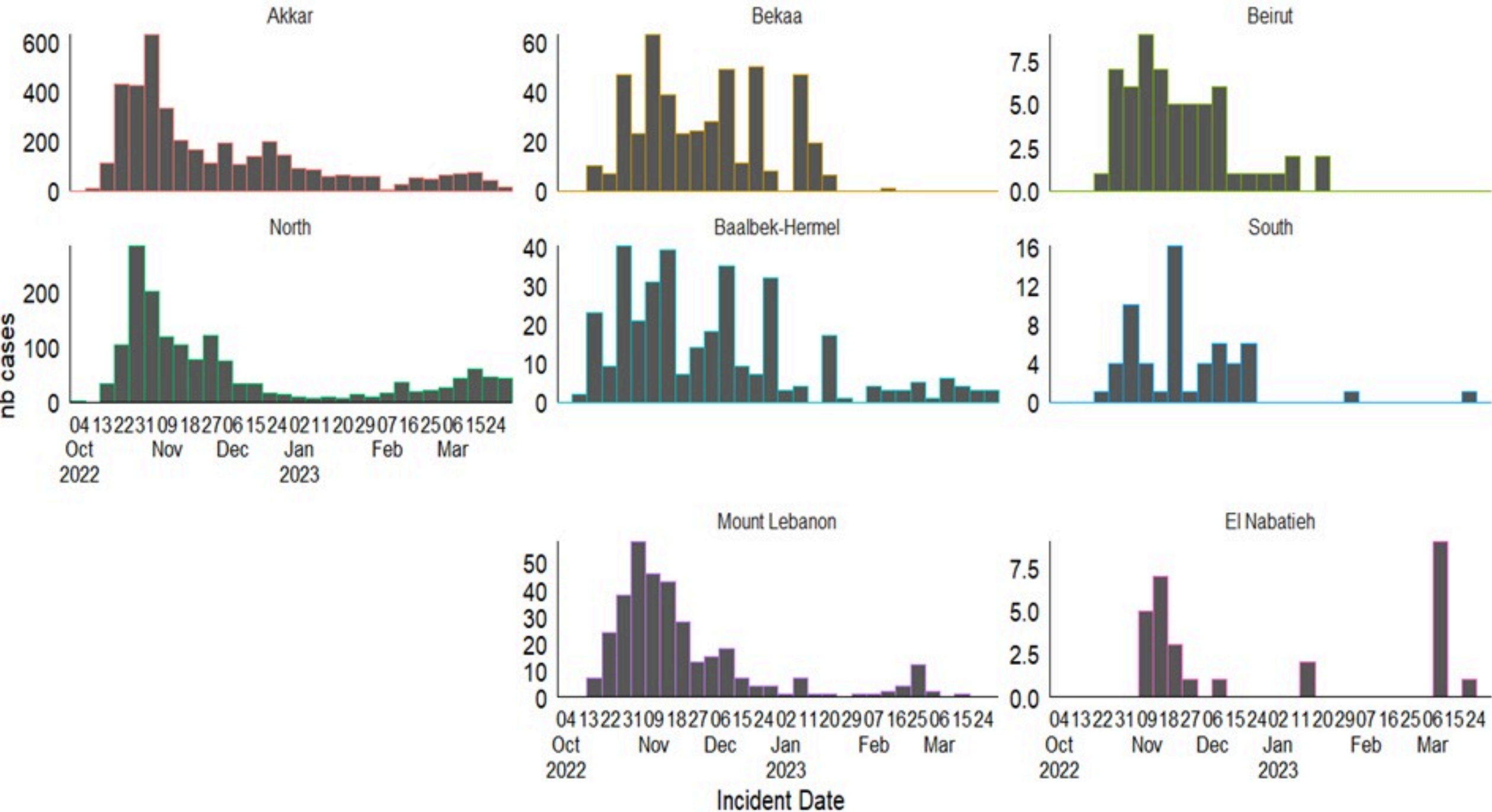




# Cholera Surveillance Report

## 30 Mar 2023

Epicurves by date of reporting by province  
(suspected and confirmed)

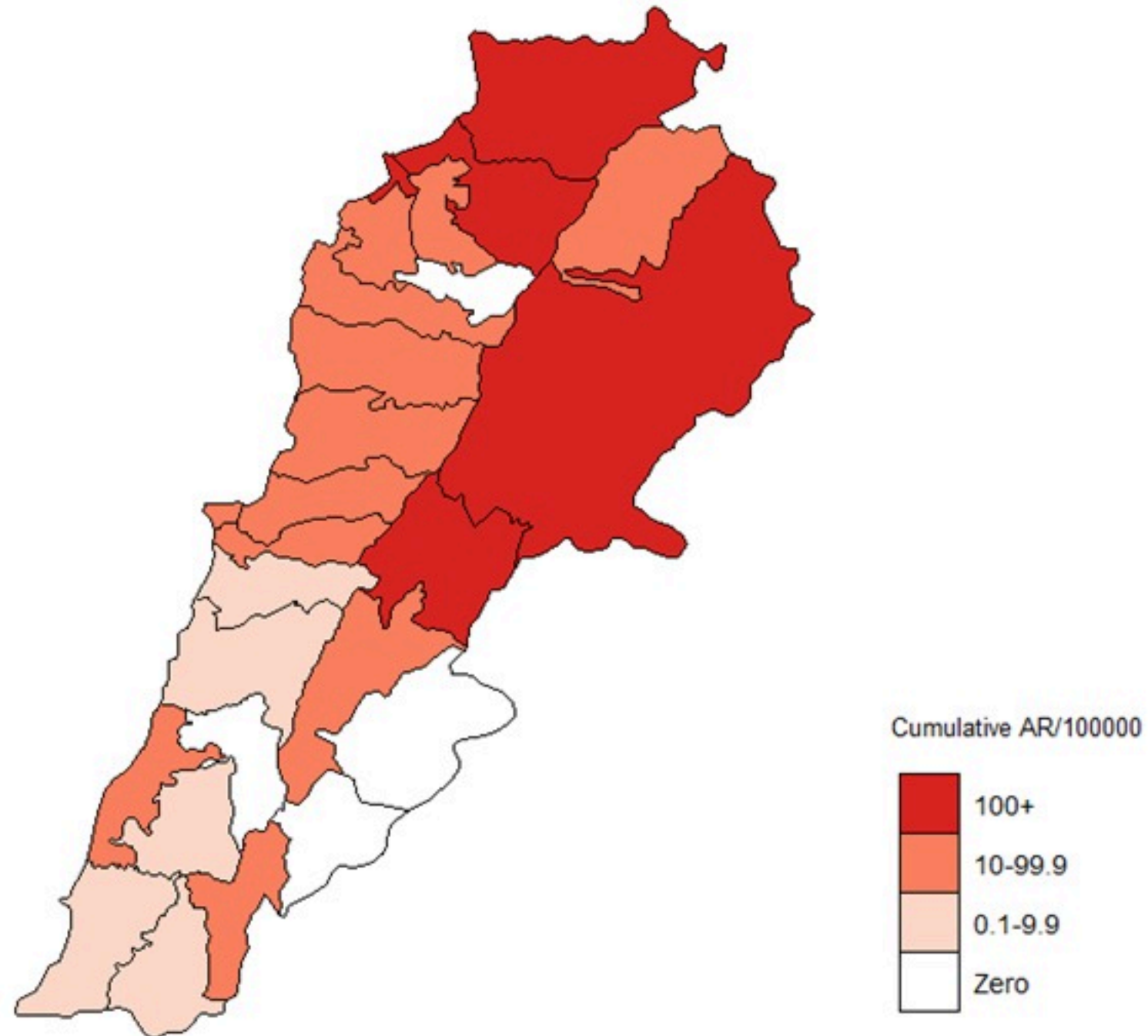


# Cholera Surveillance Update

## 30 Mar 2023

Cumulative Attack Rate per 100,000 (suspected and confirmed)

نسبة الحدوث التراكمية لكل مئة الف نسمة (الحالات المشتبهة والمثبتة)

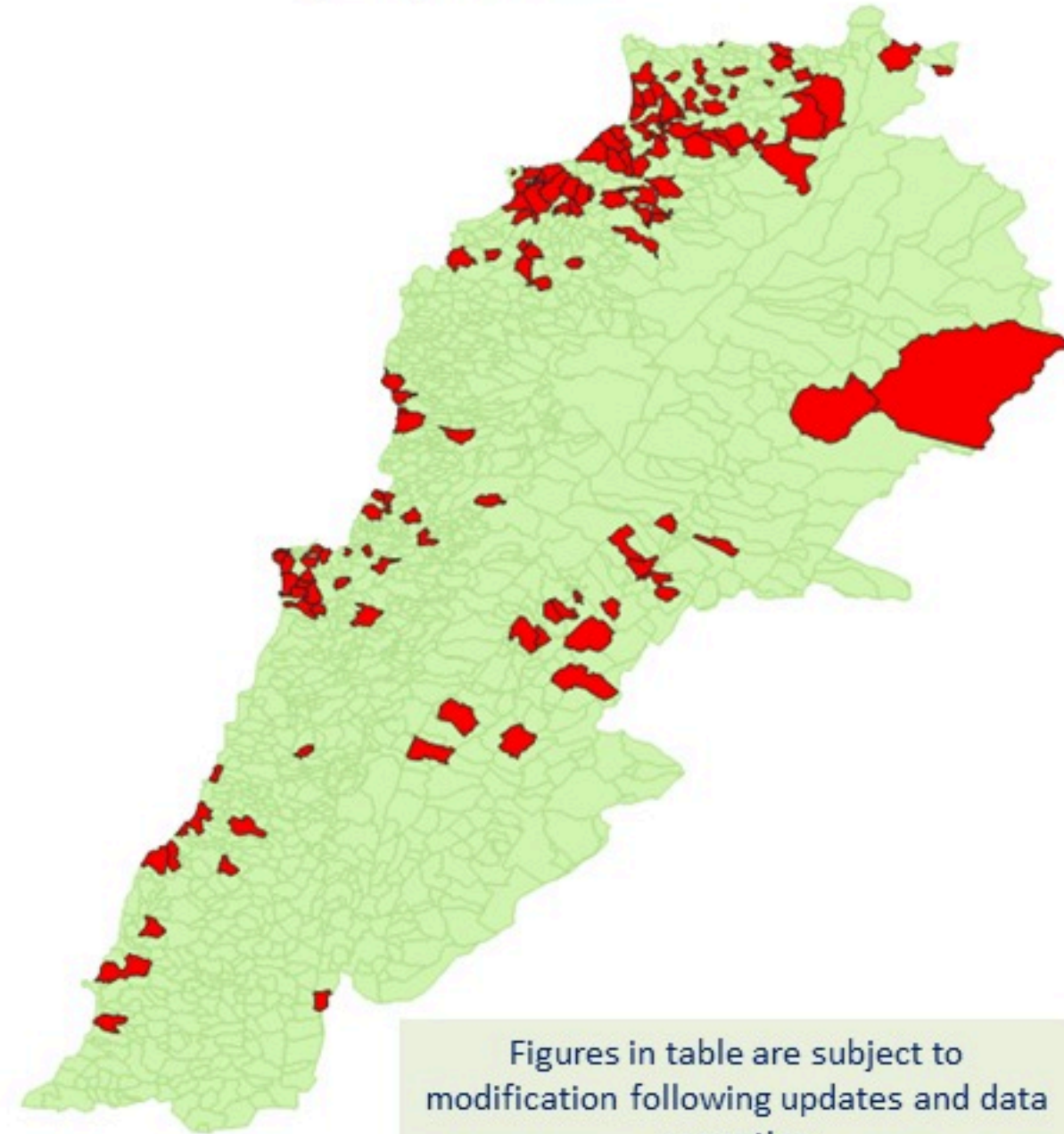




# Cholera Surveillance Update

## 30 Mar 2023

By locality (confirmed)  
حسب البلدة (المتبئة)



Figures in table are subject to modification following updates and data correction

Caza	Locality	cases	Caza	Locality	cases	
Akkar	Akkar Atika	1	Kiswan	Aintouna	1	
	Amayer/Quadi Khaled	1		Balfounh	1	
	Arqa / Marlayet Haddara	2		Bqawzuta	7	
	Bebnine / Baddoua	16		Ghair	2	
	Beit Hajj/Koucha/Khreibit Jindi	1		Jounieh Ghadir	4	
	Bergayel	1		Jounieh Sabra	4	
	Bezbina	1		Yahchouch	1	
	Birch	2		Zouk Mosbeh	3	
	Bqerzia	1		Kouna	Aaba	1
	Cheikh Ayache / Chir Hmairine	1			Aufdiq	1
	Dahr Qambar /Hokr Qatteh	1	Basa		1	
	Dabadab	1	Bsama		1	
	Dinbou	2	Dahr Ain / Ras Masqua		1	
	Fneydek	1	Rachdibbine		1	
	Halba	1	Kfar Aqa		1	
	Hayssa	1	Aadayssah		1	
	Hocouich	1	Marjoun		Biklaya	1
	Jdeidat Qaytee	1			Broummata	1
	Kfar Harra	4		Bsalim	1	
	Kfar Melki	1		Daruna/Borj Hammoud	2	
	Khane Hayat	1		Mansourieh	3	
	Khirbet Char	2		Zalqa	1	
	Kneisset Hnaldar	1		Minieh Danieh	Aadoua	1
	Kouachra	1			Assoun	4
	Koukikhat	2			Ain El Tineh	1
	Machha	2			Bahsa	1
	Majdala	1	Bakhaoun		4	
	Memneaa	1	Bhanine / Zouk Bhanine		7	
	Mhamarah / Nahr Bared / Abdeh	22	Btamar		6	
	Minlara	1	Douniya		1	
	Mqyatea	1	Kfar Chollane		2	
	Ouadi Jamous	11	Kfar Habou		1	
	Qaabrine / Tal Hayat	1	Makabta	2		
	Qbalyat	1	Seida	Minieh	18	
	Qlayat Akkar	2		Qouatiyeh	1	
Qobet Chamra	17	Qatime		3		
Rahbeh	1	Rihanieh		35		
Ransiyeh / Deir Dalloum	1	Sir Daniieh		5		
Saadine	4	Sour		Aanqoun	1	
Tell Abbas Charqui	2			Bissariyeh	4	
Tieil	1			Ghazieh	2	
Zouq Haddara	1			Khawayeb	3	
Zouq Hosnieh	1			Seida	1	
Aley	Aley		1	Sawfand	1	
	Hay Selloum/Chouifat		1	Abbassiyeh	1	
Baalbek	Arsal		27	Deir Qaroun Ain	4	
	Kfar Dabache		2	Badawi	16	
	Khodr		2	Mina	7	
	Temnine Faouqa	1	Qobbah	21		
	Temnine Tahta	1	Tripoli Bab Raml	1		
	Younine	1	Tripoli Gardans	2		
	Batroun	Chikka	2	Tripoli Haddadine	1	
Achrafieh		2	Tripoli Nouri	1		
Ain Miralsseh		1	Tripoli Souayqa / Assaen	3		
Hamra		1	Tripoli Tabbaneh	21		
Mdaouar / Mar Mikhael		1	Tripoli Zaitoun	15		
Msaltbeh		1	West Beqaa	Kamel Jaruz	1	
Beirut		Zaarouriyeh		2	Kufaya	1
	Amchit	1		Saghbine	1	
	Ehmej	1		Zahleh	Aali Nahri	2
	Fidar	1			Bar Elias	2
	Halate	1			Dalhamieh	2
	Jbeil	1			Haruch Mandra	1
	Mastita	1			Hawch Omara	7
Chouf	Amchit	1			Majdal Anjar	1
	Ehmej	1			Qob Elias	9
	Fidar	1	Raait		11	
	Halate	1	Saadinayd		11	
	Jbeil	1	Talabaya		2	
	Mastita	1	Zahleh Madaka	2		
	Jbeil	Amchit	1	Zghorta	Aalma	1
Ehmej		1	Andeh		1	
Fidar		1	Kfar Dhaqous		2	
Halate		1	Majdalya Zghorta		7	
Jbeil		1	Mirata / Fozur		3	
Mastita		1	Sabad		1	
					Zghorta	5