



Regional and international surveillance findings

During 2016, 12 polio cases were confirmed, in addition to 3 cases of circulating Vaccine Derived Poliovirus (VDPV). The affected countries are : Pakistan

(8 polio), Afghanistan (4 polio), Lao PDR (3VDPVs).

National surveillance findings

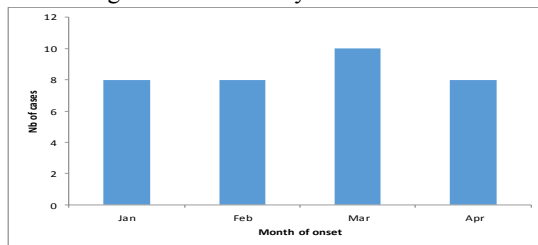
Total count

To date, 34 AFP cases were reported in Lebanon from the 1st January 2016.

Cases by time

Between 8 to 10 cases were reported by month.

Fig 1: Distribution by month of onset



Cases by place

Reported cases were from Mount-Lebanon (17), Great North (6), Great Bekaa (3), Nabatieh (3), South (3) and Beirut (2).

Fig 2: Distribution by mohafaza



Cases by person

79% of the cases are Lebanese, 18% Syrian, and 3% Palestinian. 65% of cases are males. 44% of cases are under 5 years old. Five cases with zero-dose of polio vaccine were observed (2 cases: 5 months and 11 months) and 3 cases above 5 years. The proportion of cases with 1-2 doses was 33% for under 1 year, 8% for 1-4y, 0% for the above than 5 years age group

Fig 3: Proportions of cases by age group

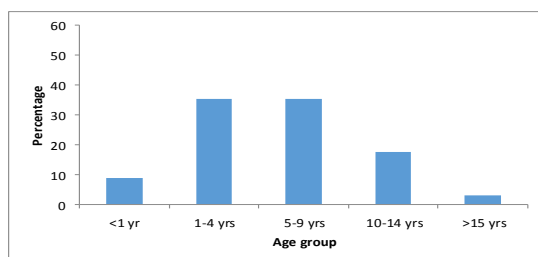
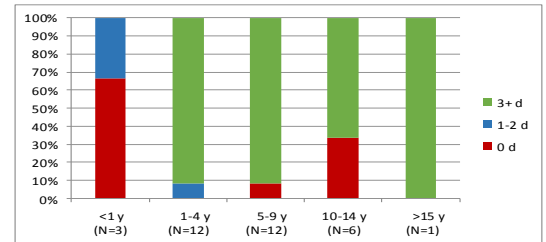


Fig 4: Cases distribution by age and vaccination status



Laboratory results

Stool specimens were collected from 30 AFP cases and from 56 contacts (both household and neighborhood). Virological culture is conducted in the national polio laboratory in Amman (Jordan).

To date, no wild poliovirus was isolated. Non-polio Enterovirus was isolated from 4 persons and Sabin-like from other 4 persons.

Table 1: Available laboratory results

| | Cases | Contacts |
|-----------------------|-------|----------|
| Wild polio | 0 | 0 |
| Sabin virus | 2 | 2 |
| Non-polio enterovirus | 2 | 2 |
| Negative | 26 | 52 |
| Total | 30 | 56 |

Cases by classification

26 AFP cases are discarded from being polio. 8 cases are still pending.

Among the discarded cases: 42% were diagnosed as Guillain Barre Syndrome.

Surveillance indicators

Three main indicators are monitored:

- ◇ The annual non-polio AFP rate is 5.1/100000 under 15 years at national level. At mohafaza level, the annualized rates are 8.1 for Mount-Lebanon, 7.6 for Nabatieh, 5.4 for Beirut, 3.8 for the North, 3.5 for the South, and 2.3 for the Bekaa. By nationality, the annualized rates are 6.1 for regular population, and 3.5 for the population of Syrian refugees.
- ◇ The proportion of cases reported within one week of paralysis onset is 74%.
- ◇ The proportion of cases with adequate 2 stool specimens collected within 14 days from paralysis onset