

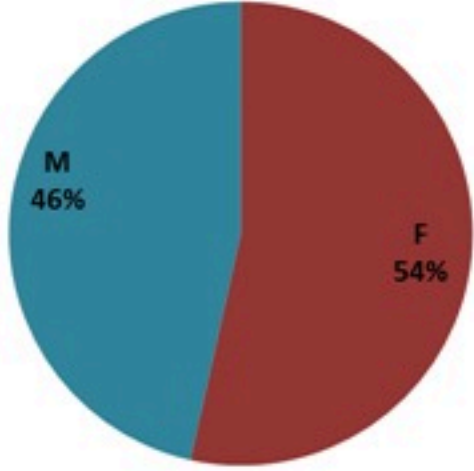
ترصد الكوليرا في لبنان 7 شباط 2023

الجمهورية اللبنانية
وزارة الصحة العامة
برنامج الترصد الوبائي

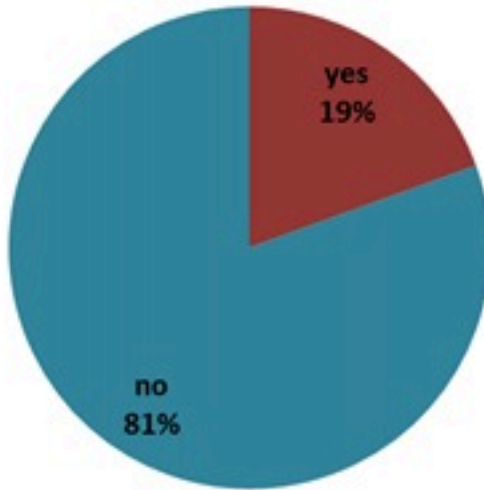


الخطوط الساخنة

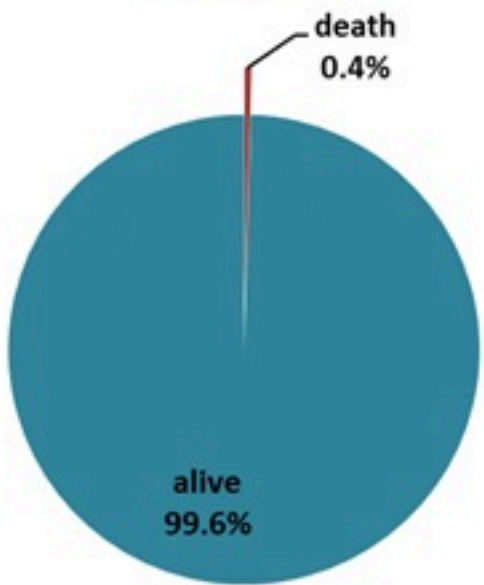
1760 (الصليب الأحمر)
1787 (وزارة الصحة)



حسب الجنس
(المشبهة والمتبنة)



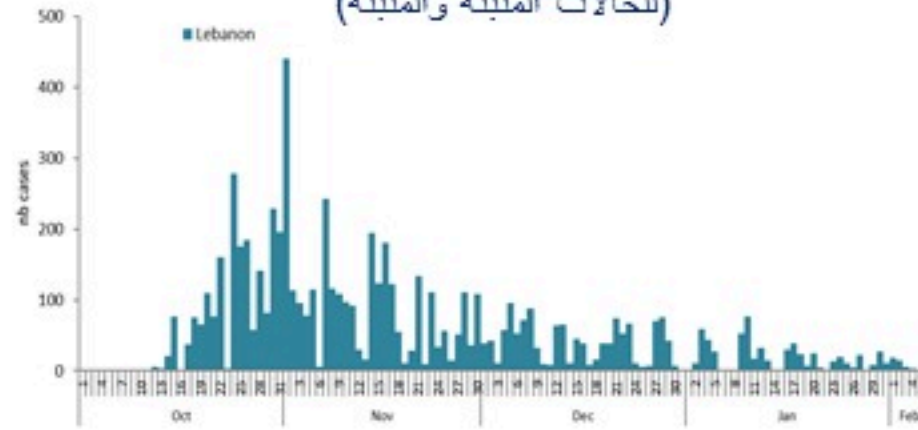
حسب الاستشفاء
(المشبهة والمتبنة)



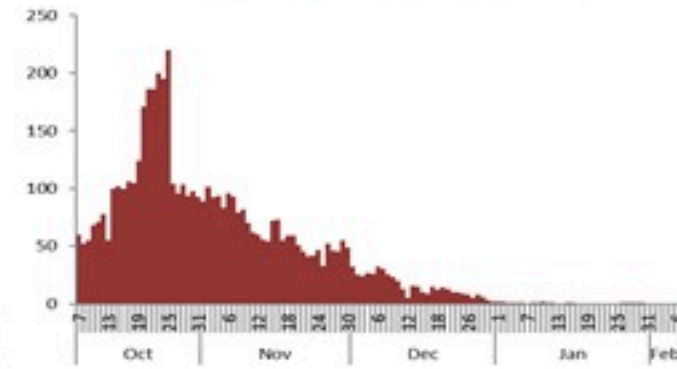
حسب تطور الحالة
(المشبهة والمتبنة)

الوفيات (المتبنة)		الحالات المثبتة		كافة الحالات المشبهة والمتبنة	
التراكمي	الجديدة (آخر 24 ساعة)	التراكمي	الجديدة (آخر 24 ساعة)	التراكمي	الجديدة (آخر 24 ساعة)
23	0	671	0	6409	1

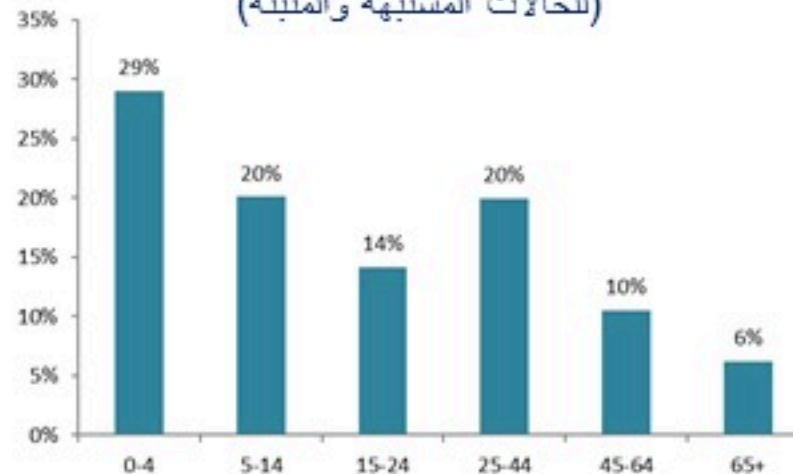
حسب تاريخ الإبلاغ
(للحالات المثبتة والمتبنة)



استعمال الاسرة الاستشفائية
(للحالات المثبتة والمتبنة)



حسب الفئة العمرية
(للحالات المشبهة والمتبنة)



حسب البلدة
(للحالات المثبتة)



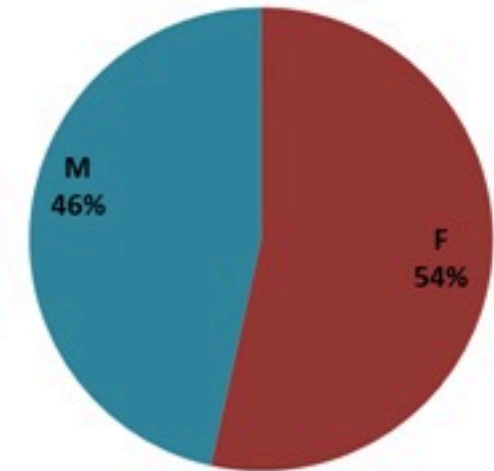
Cholera Surveillance Report

7 Feb 2023

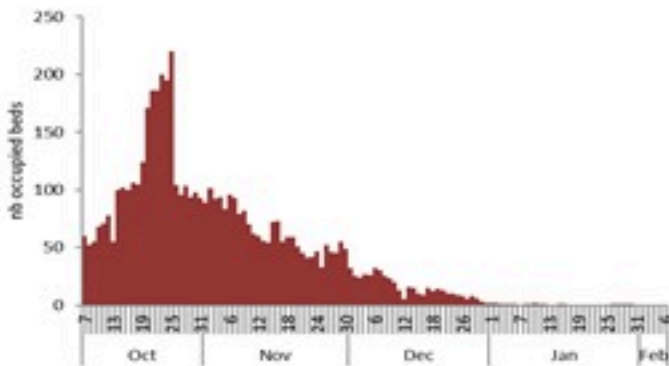
Call Centers
 1760 (Red Cross)
 1787 (MOPH)

All cases (suspected and confirmed)		Confirmed Cases		Deaths (confirmed)	
New (past 24 h)	Cumulative	New (past 24 h)	Cumulative	New	Cumulative
1	6409	0	671	0	23

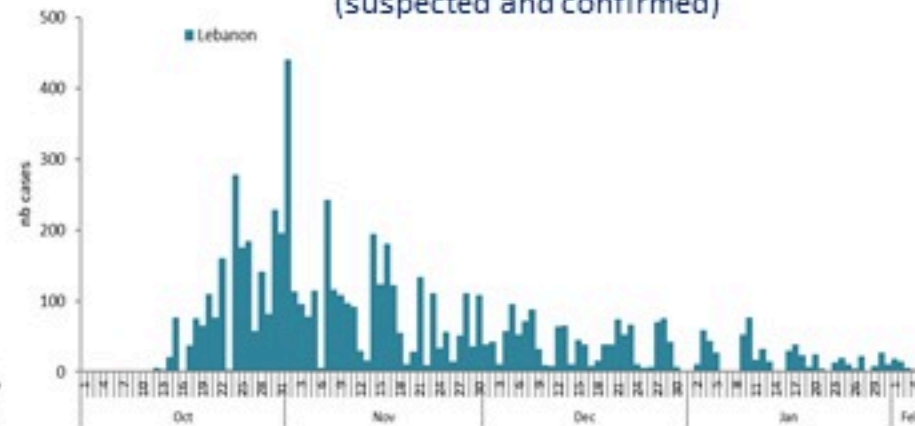
By Sex
(suspected and confirmed)



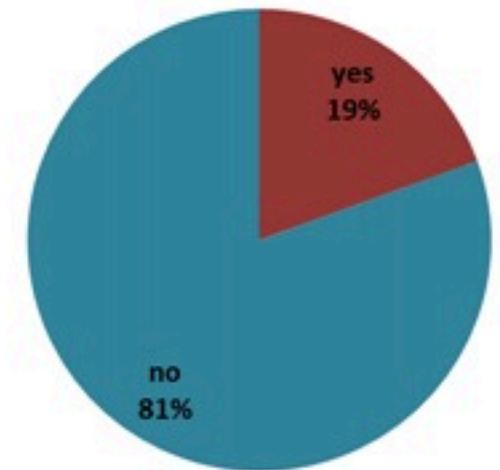
Occupied hospital beds
(suspected and confirmed)



By date of report
(suspected and confirmed)



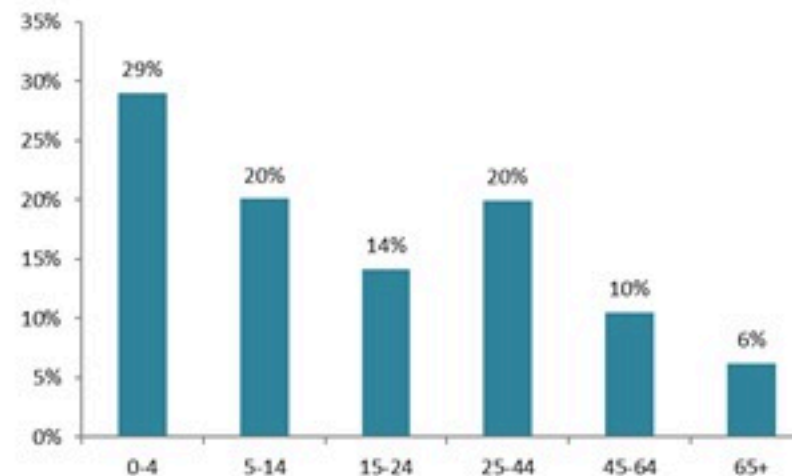
By Hospital Admission
(suspected and confirmed)



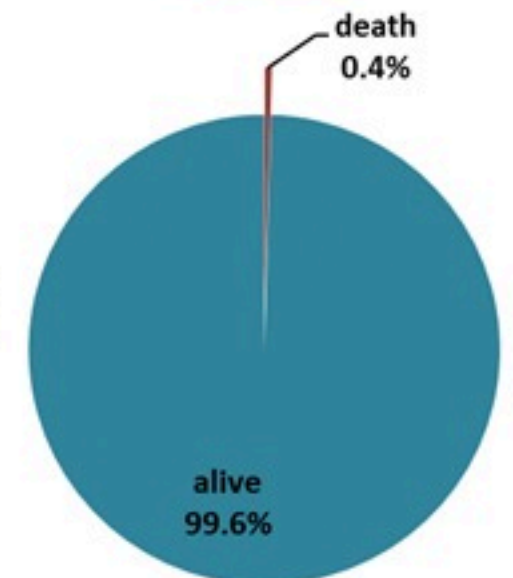
By locality (confirmed cases)



By age group
(suspected and confirmed cases)



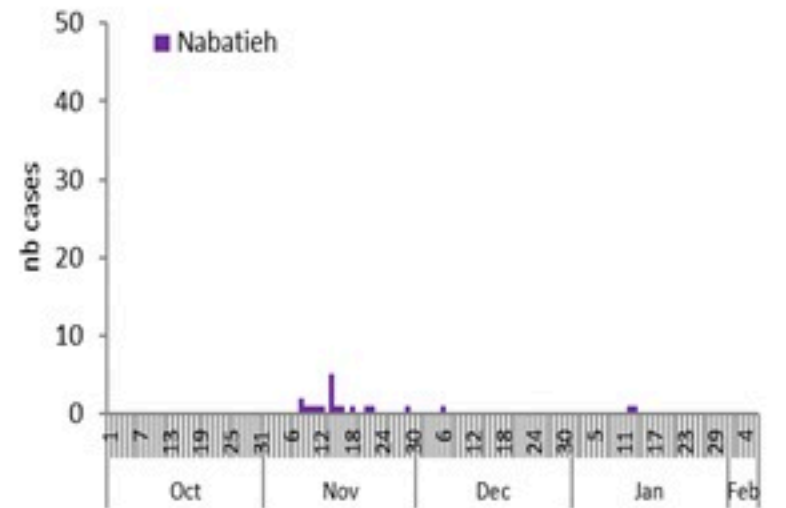
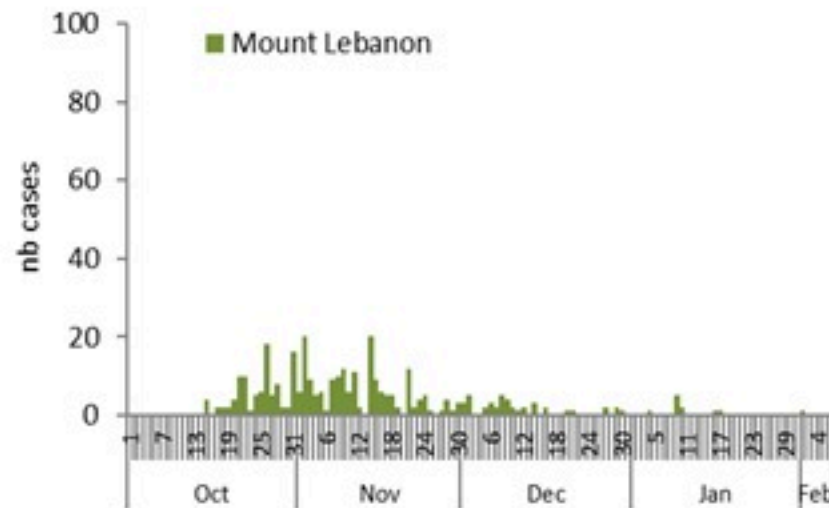
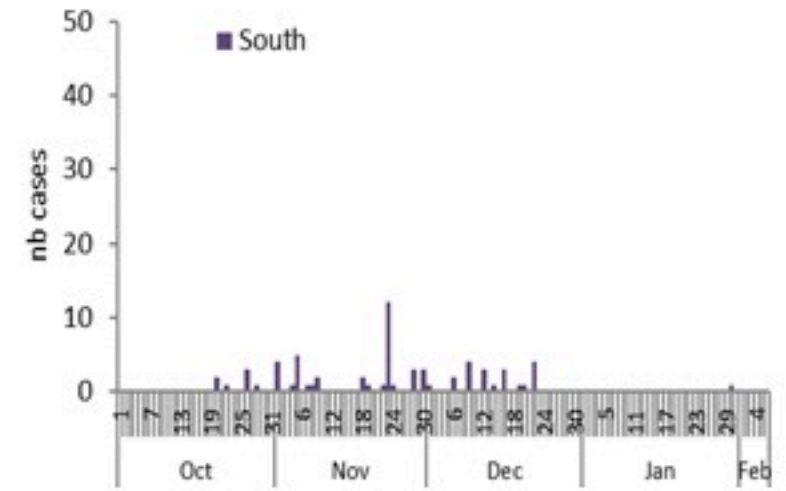
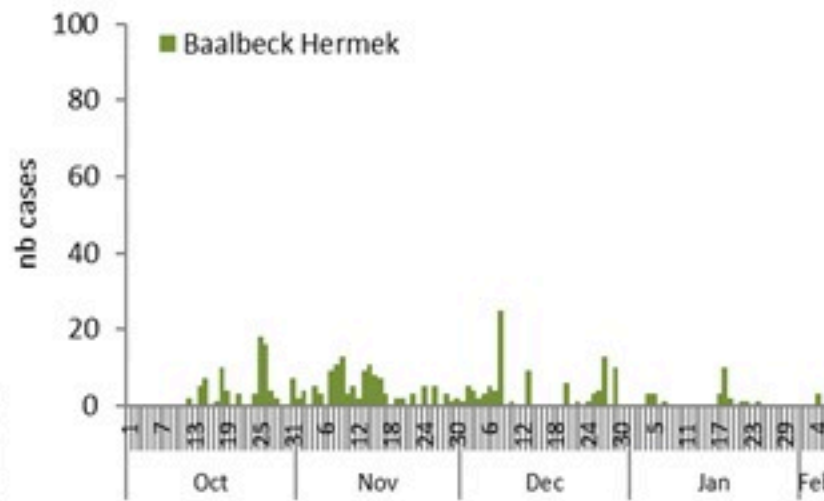
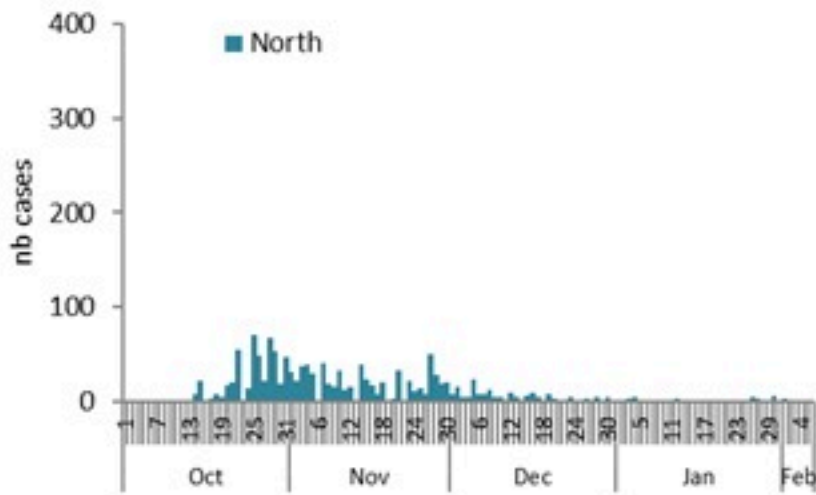
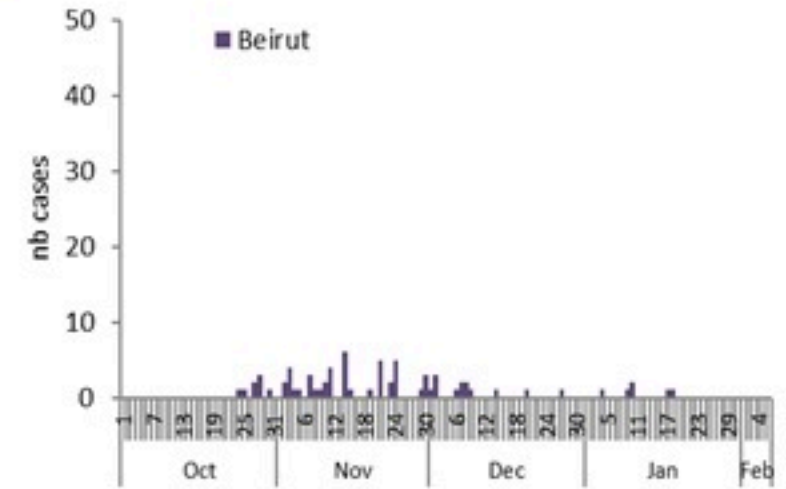
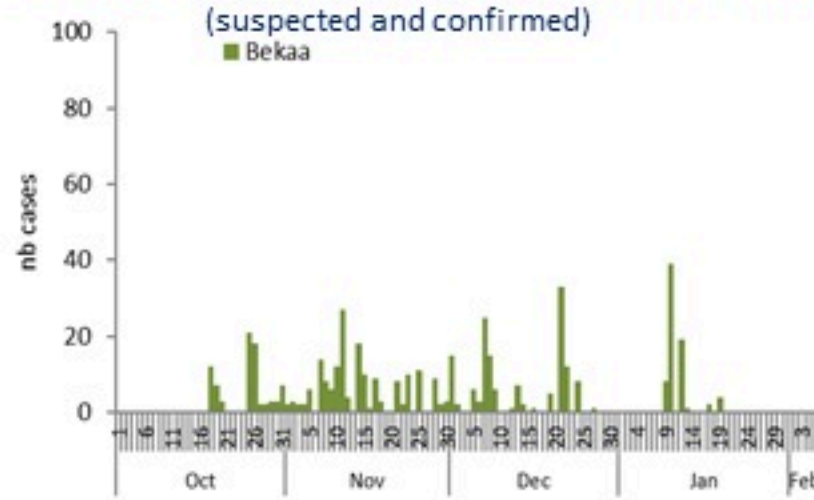
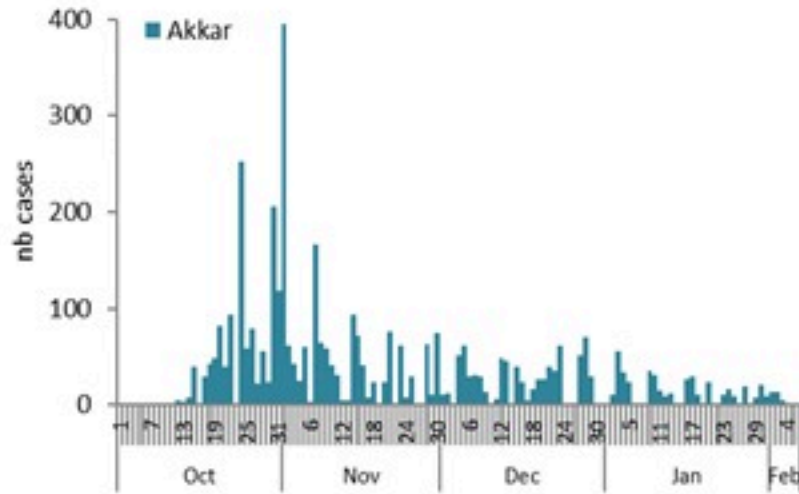
By Outcome
(suspected and confirmed)



Cholera Surveillance Report

7 Feb 2023

Enicurves by date of reporting by province



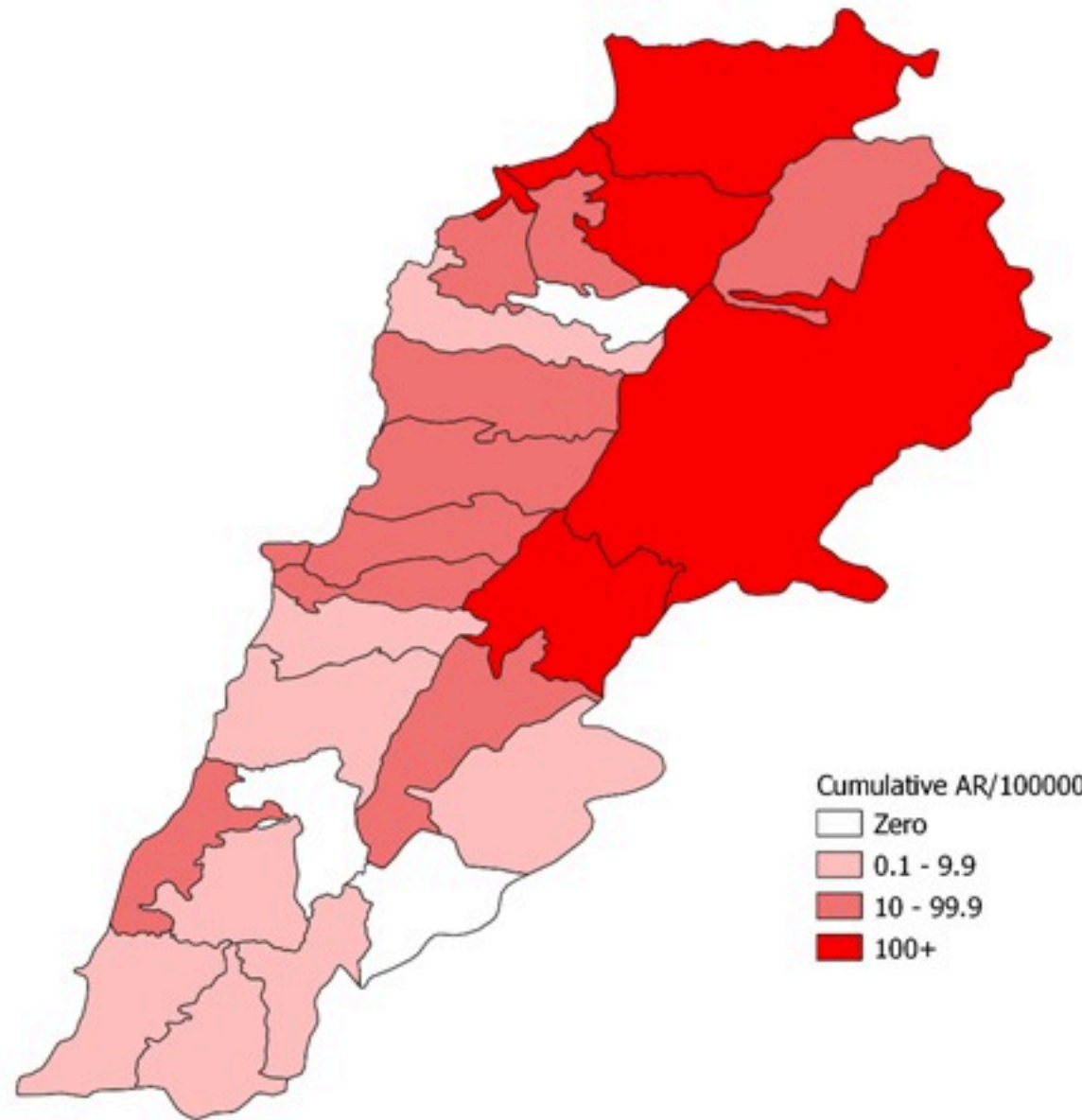
Cholera Surveillance Update

7 Feb 2023

4

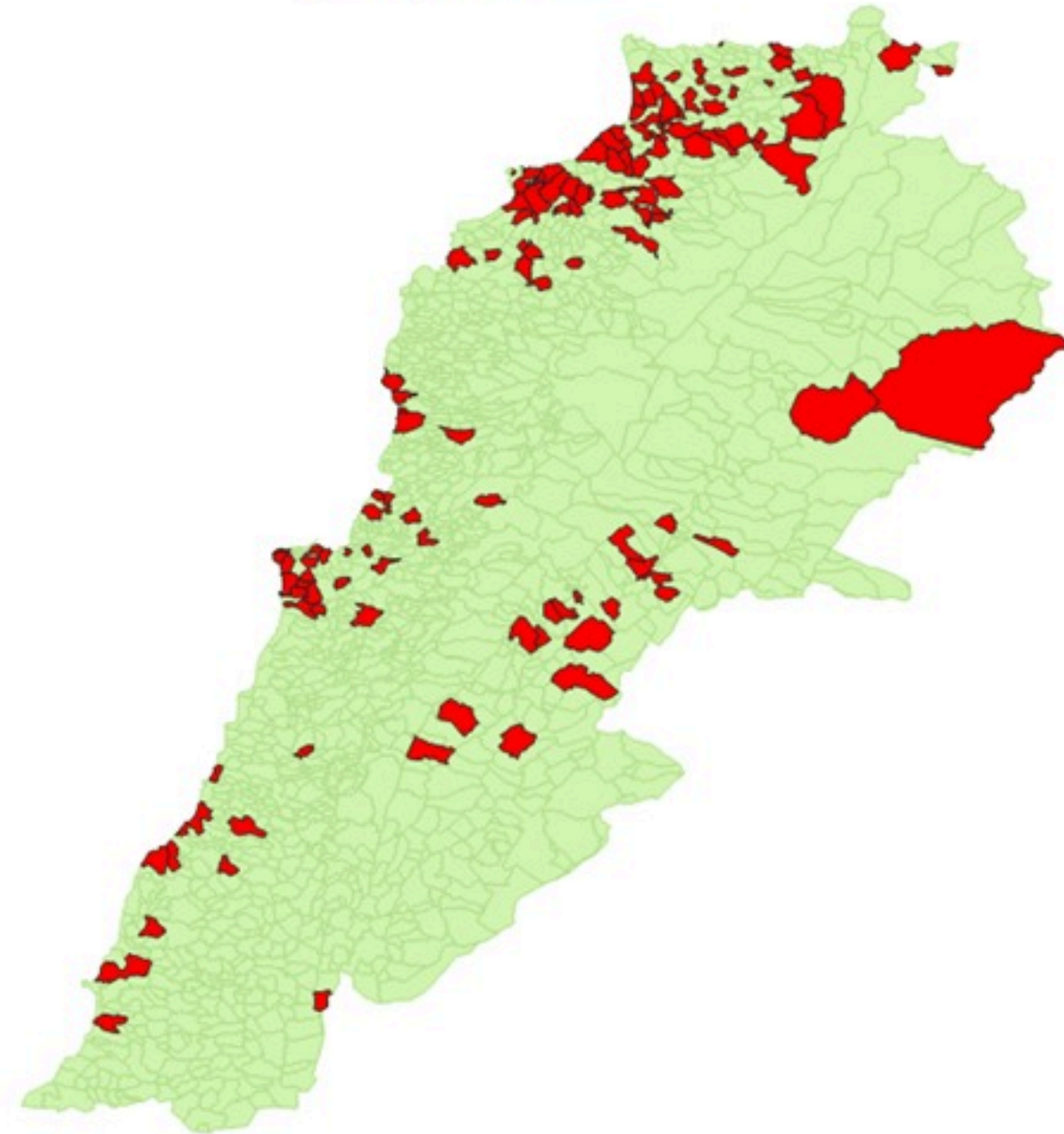
Cumulative Attack Rate per 100,000 (suspected and confirmed)

نسبة الحدوث التراكمية لكل مئة ألف نسمة (الحالات المشتبهية والمثبتة)



Cholera Surveillance Update 7 Feb 2023

By locality (confirmed)
حسب البلدة (المتبئة)



Figures in table are subject to modification following updates and data correction

Caza	Locality	Cases	Caza	Locality	Cases		
Akkar	Akkar Atika	1	Kiswan	Aintouna	1		
	Amayer/Quadi Khaled	1		Balfounh	1		
	Arqa / Marlayet Haddara	2		Bqatouta	7		
	Bebnine / Baddoua	16		Ghair	2		
	Beit Hajj/Koucha/Khreibit Jindi	1		Jounieh Ghadir	4		
	Bergayel	1		Jounieh Sabra	4		
	Bezbina	1		Yahchouch	1		
	Birch	2		Zouk Mosbeh	3		
	Bqerzia	1		Kouna	Aaba	1	
	Cheikh Ayache / Chir Hmairine	1			Aufdiq	1	
	Dahr Qambar /Hokr Qatteh	1	Basa		1		
	Dabadab	1	Bsama		1		
	Dinbou	2	Dahr Ain / Ras Masqua		1		
	Fneydek	2	Rachdibbine		1		
	Halba	1	Kfar Aqa		1		
	Hayssa	1	Aadayssah		1		
	Hocouich	1	Marjoun		Biklaya	1	
	Jdeidat Qaytee	1			Broummata	1	
	Kfar Harra	4		Bsalim	1		
	Kfar Melki	1		Daruna/Borj Hammoud	2		
	Khane Hayat	1		Mansourieh	3		
	Khirbet Char	2		Zalqa	1		
	Kneisset Hnaldar	1		Minieh Danieh	Aadoua	1	
	Kouachra	1			Assoun	4	
	Koukikhat	2			Ain El Timh	1	
	Machha	2			Bahsa	1	
	Majdala	1	Bakhaoum		4		
	Memneaa	1	Bhanine / Zouk Bhanine		7		
	Mhamarah / Nahr Bared / Abdeh	22	Btamar		6		
	Minlara	1	Douniya		1		
	Mqyatea	1	Kfar Chollane		2		
	Ouadi Jamous	11	Kfar Habou		1		
	Qaabrine / Tal Hayat	1	Makubta	2			
	Qbalyat	1	Seida	Minieh	18		
	Qlayat Akkar	2		Qouatiyh	1		
	Qobet Chamra	17		Qatime	3		
	Rahbeh	1		Rihanieh	35		
	Ransiyeh / Deir Dalloum	4		Sir Dannieh	5		
	Saadine	4		Sour	Aanqoun	1	
	Tell Abbas Charqui	2			Bissariyeh	4	
Tieil	1	Ghazieh			2		
Zouq Haddara	1	Khawayeb			3		
Zouq Hosnieh	1	Seida			1		
Aley	Aley	1	Sawfand		1		
	Hay Selloum/Chouifat	1	Abbassiyeh		1		
Baalbek	Arsal	27	Deir Qaroun Ain		4		
	Kfar Dabache	2	Badawi		16		
	Khodr	2	Mina		7		
	Temnine Faouqa	2	Qobbah	21			
	Temnine Tahta	1	Tripoli Bab Raml	1			
	Younine	1	Tripoli Gardans	2			
	Batroun	Chikka	1	Tripoli Haddadine	1		
Beirut		Achrafieh	2	Tripoli Nouri	1		
	Ain Miralssch	1	Tripoli Souayqa / Assaen	3			
	Hamra	1	Tripoli Tabbaneh	21			
	Mdaouar / Mar Mikhael	1	Tripoli Zaitoun	15			
	Msaitbeh	1	West Beqaa	Kamel Jaruz	1		
	Chouf	Zaarouriyeh		1	Kufaya	1	
		Amchit		2	Saghbine	1	
		Ehmej		1	Zahleh	Aali Nahri	2
		Fidar		1		Bar Elias	2
		Halate		1		Dalhamieh	2
Jbeil		1		Harouch Mandra		1	
Mastita		2		Hawch Omara		7	
Jbeil		Amchit		2		Majdal Anjar	1
		Ehmej		1		Qob Elias	9
		Fidar	1	Raait		11	
	Halate	1	Saadinayd	11			
	Jbeil	1	Talabaya	2			
	Mastita	2	Zahleh Madaka	2			
	Zghorta	Zaarouriyeh	1	Zghorta	Aalma	1	
		Amchit	1		Andeh	1	
		Ehmej	2		Kfar Dhaqous	2	
		Fidar	7		Majdalya Zghorta	7	
Halate		3	Mirata / Fozur		3		
Jbeil		1	Sebwa		1		
Mastita		5	Zghorta		5		

Cholera weekly incidence rate/100,000

