

ترصد الكوليرا في لبنان

24 أيار 2023

الجمهورية اللبنانية
وزارة الصحة العامة
برنامج الترصد الوبائي

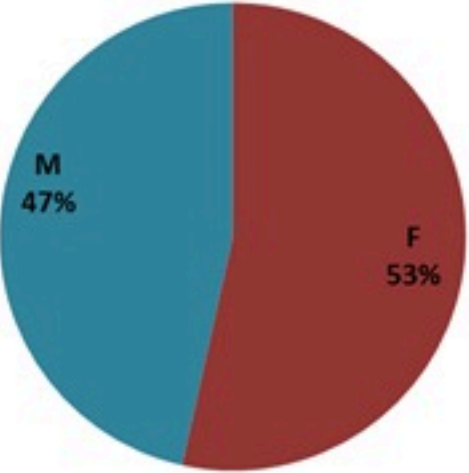


الخطوط الساخنة

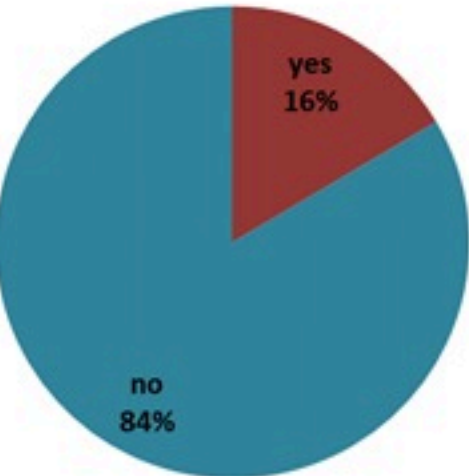
1760 (الصليب الأحمر)
1787 (وزارة الصحة)

الوفيات (المثبتة)		الحالات المثبتة		كافة الحالات المثبتة والمشبّهة	
التراكمي	الجديدة (آخر 24 ساعة)	التراكمي	الجديدة (آخر 24 ساعة)	التراكمي	الجديدة (آخر 24 ساعة)
23	0	671	0	7850	26

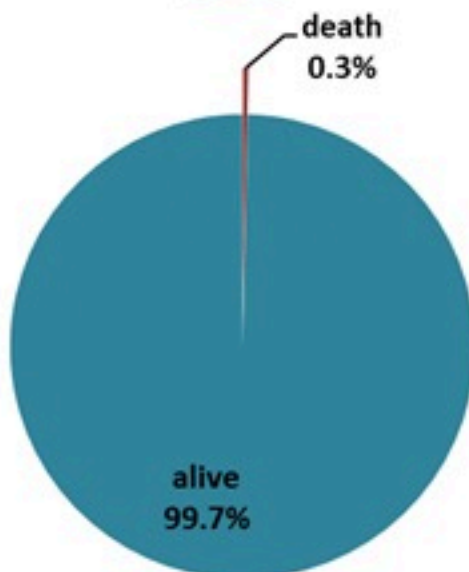
حسب الجنس
(المشبّهة والمثبتة)



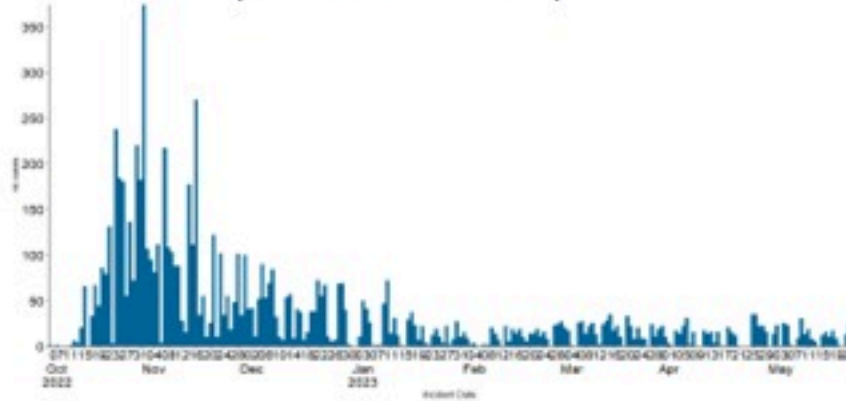
حسب الاستشفاء
(المشبّهة والمثبتة)



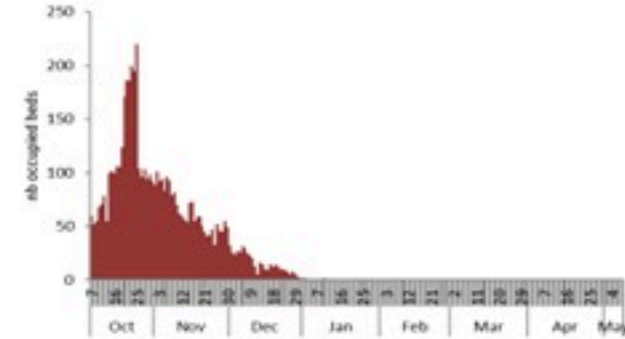
حسب تطور
الحالة
(المشبّهة والمثبتة)



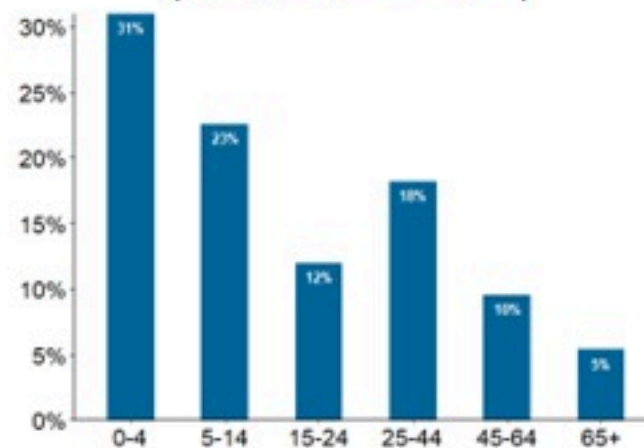
حسب تاريخ الإبلاغ
(للحالات المثبتة والمشبّهة)



استعمال الاسره الاستشفائية
(للحالات المثبتة والمشبّهة)



حسب الفئة العمرية
(للحالات المثبتة والمشبّهة)



حسب البلده
(للحالات المثبتة)



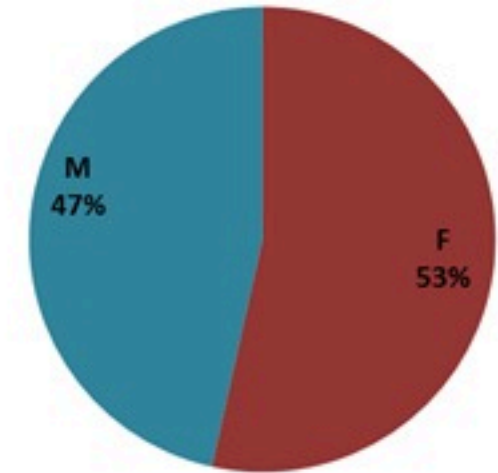
Cholera Surveillance Report

24 May 2023

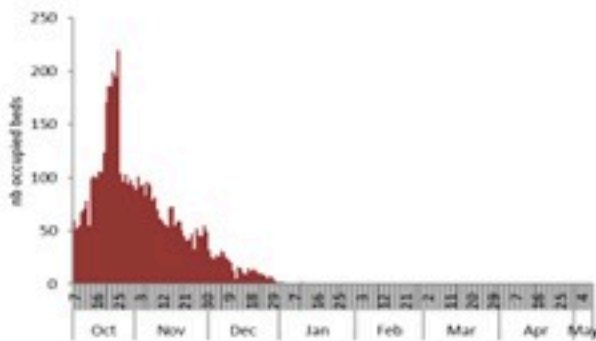
Call Centers
 1760 (Red Cross)
 1787 (MOPH)

All cases (suspected and confirmed)		Confirmed Cases		Deaths (confirmed)	
New (past 24 h)	Cumulative	New (past 24 h)	Cumulative	New	Cumulative
26	7850	0	671	0	23

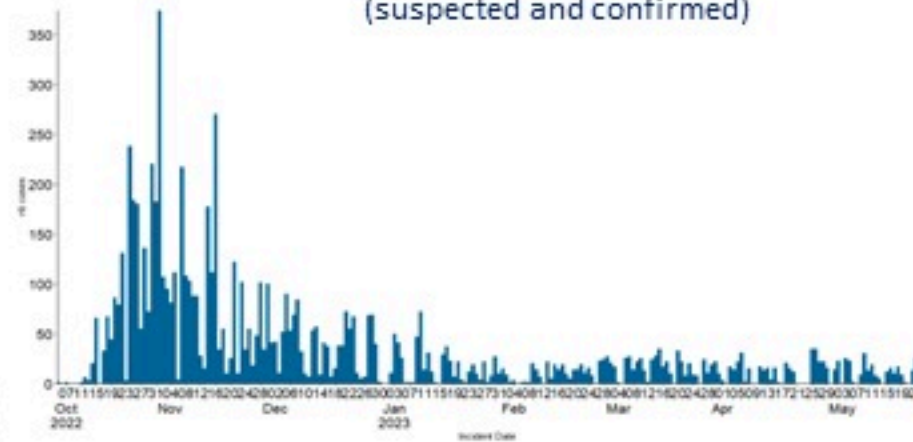
By Sex
(suspected and confirmed)



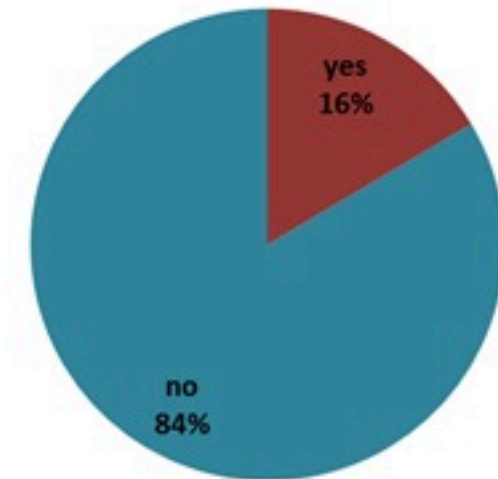
Occupied hospital beds
(suspected and confirmed)



By date of report
(suspected and confirmed)



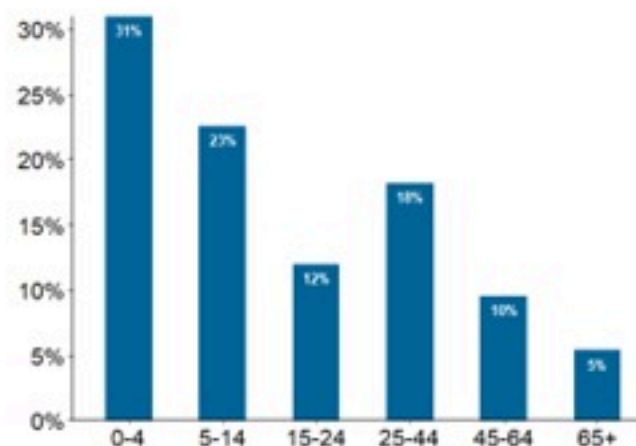
By Hospital Admission
(suspected and confirmed)



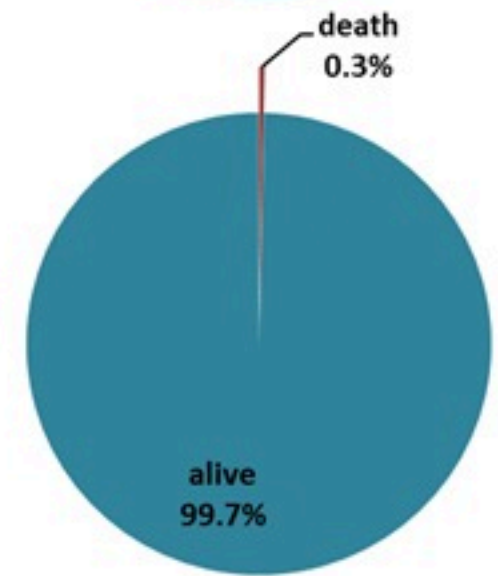
By locality (confirmed cases)



By age group
(suspected and confirmed cases)



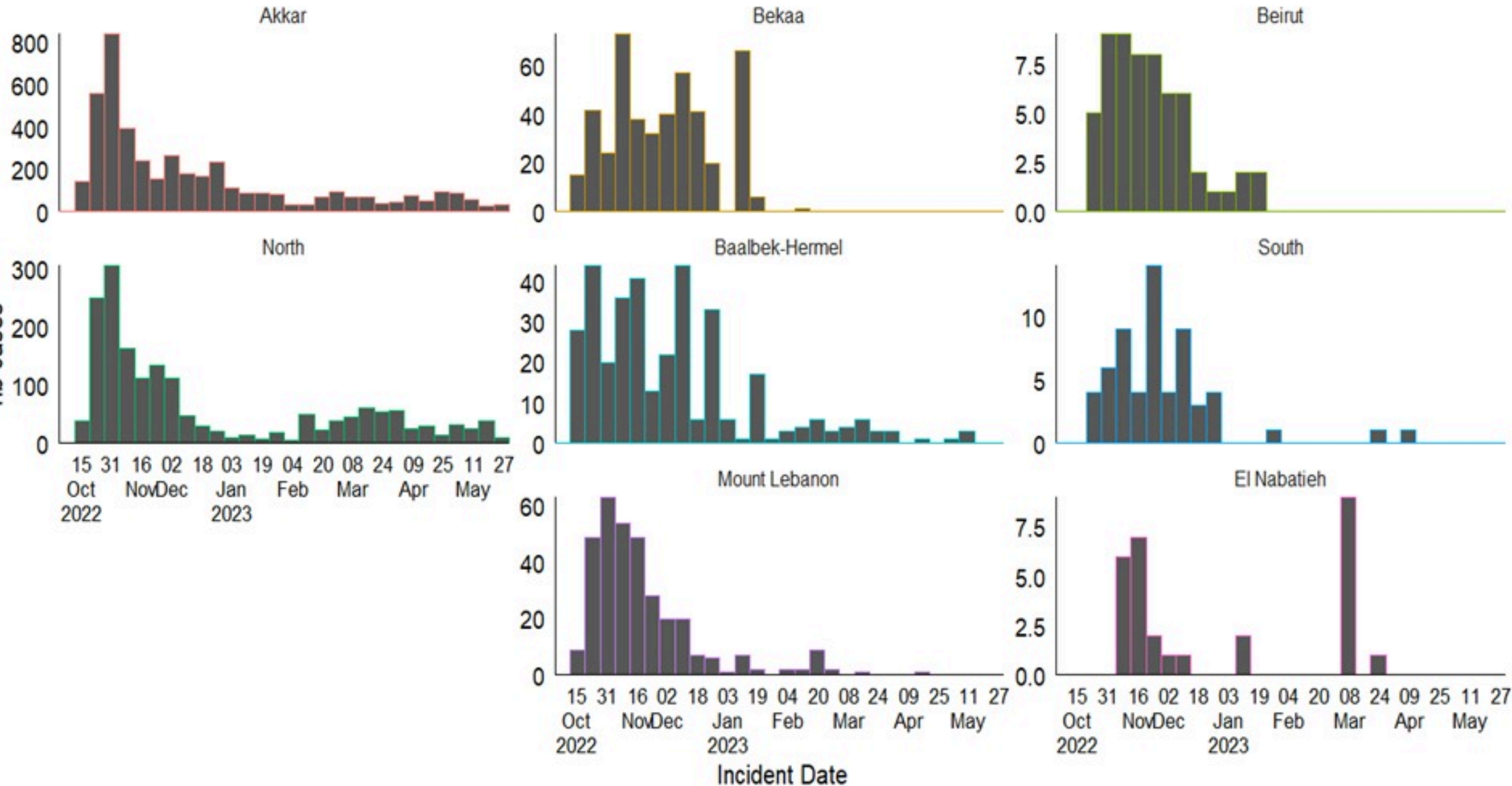
By Outcome
(suspected and confirmed)



Cholera Surveillance Report

24 May 2023

Epicurves by date of reporting by province
(suspected and confirmed)

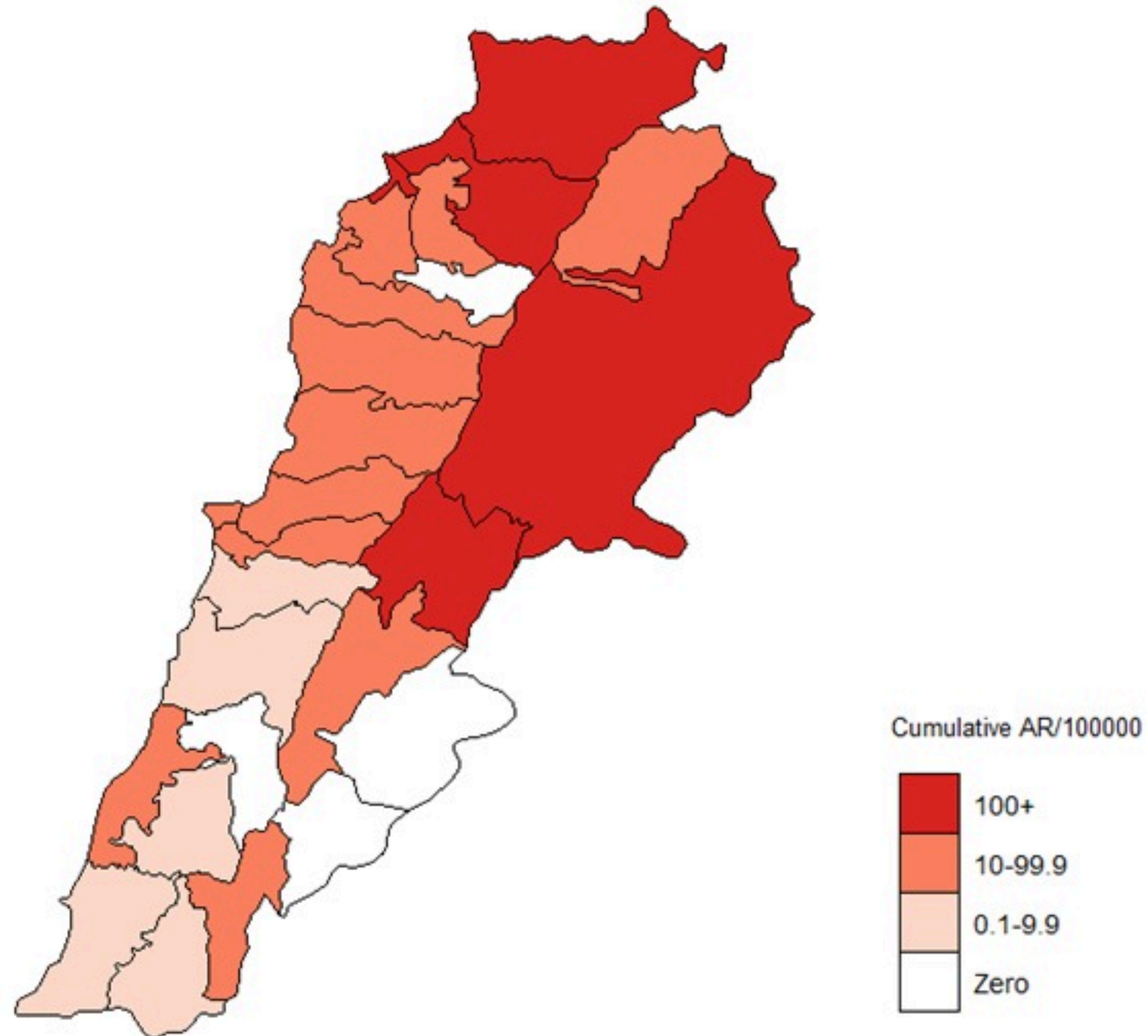


Cholera Surveillance Update

24 May 2023

Cumulative Attack Rate per 100,000 (suspected and confirmed)

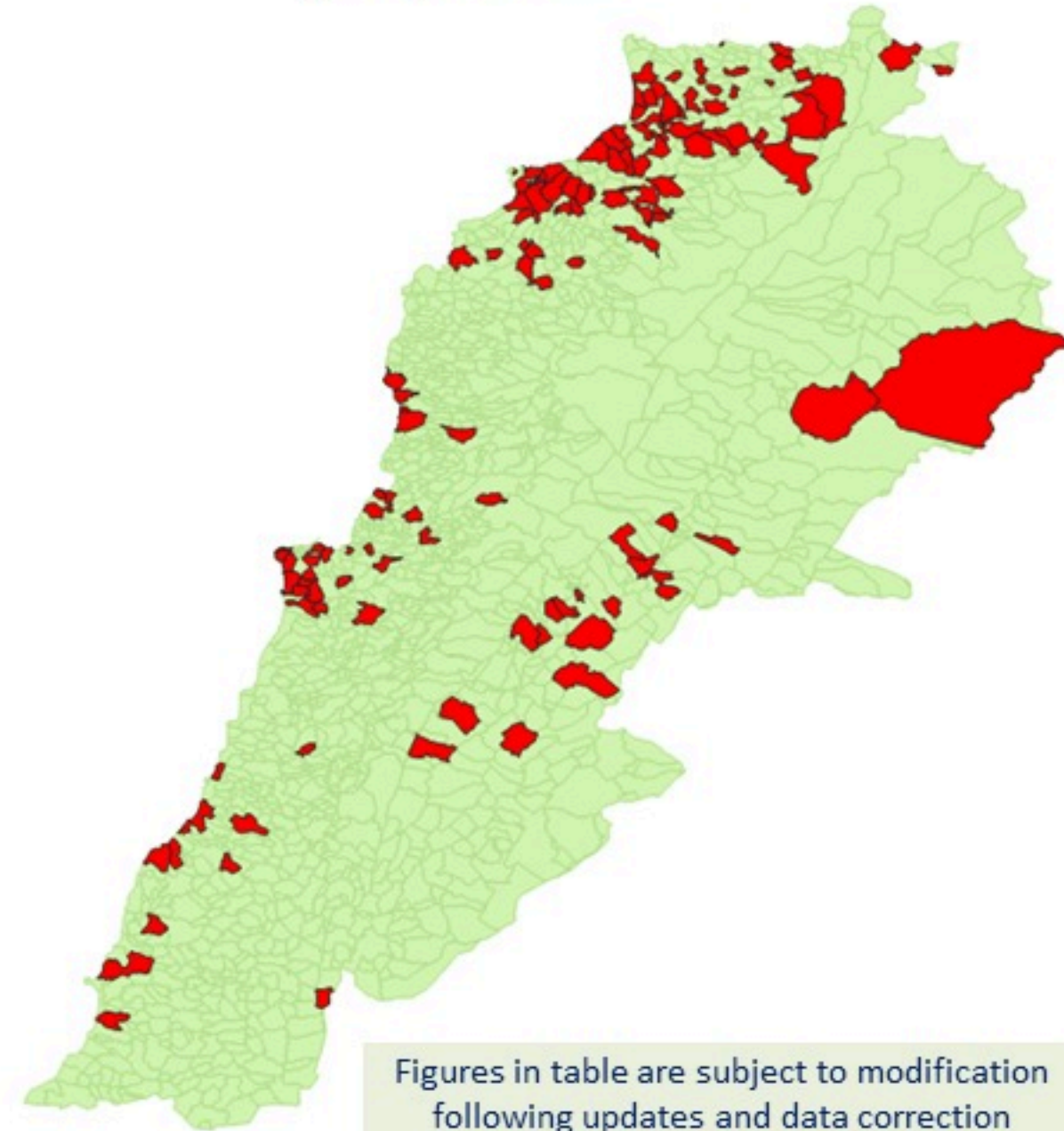
نسبة الحدوث التراكمية لكل مئة الف نسمة (الحالات المشتبهه والمثبتة)



Cholera Surveillance Update

24 May 2023

By locality (confirmed)
حسب البلدة (المتبقة)



Figures in table are subject to modification following updates and data correction

Locality	cases	Locality	cases
Akkar		Koura	
Akkar Atika	1	Aintouna	1
Amayer/Duadi Khaled	1	Balfounh	1
Arqa / Marlayet Haddara	2	Bqajouta	7
Bebnine / Baddoua	16	Ghazir	2
Beit Hajj/Koucha/Khrebit Jindi	1	Jounieh Ghadir	4
Bergayel	1	Jounieh Sabra	4
Bezbina	1	Yahchouch	1
Bireh	1	Zouk Mosbeh	3
Bqerzla	1	Koura	
Cheikh Ayache / Chir Hmairine	1	Aaba	1
Dahr Qambar /Hokr Qatteh	1	Aafdiq	1
Dabadab	1	Bana	1
Dinbou	1	Baama	1
Fneydek	1	Dahr Ain / Ras Masqou	1
Halba	1	Rachdibbine	1
Hayssa	1	Kfar Aqa	1
Hoeuich	1	Marjoun	
Jdeidat Qaytee	1	Aadlyssah	1
Kfar Harra	4	Motin	
Kfar Melki	1	Biklaya	1
Khane Hayat	1	Broummana	1
Khirbet Char	1	Bsalim	1
Kneisset Hnaldar	1	Daruna/Borj Hammoud	2
Kouachra	1	Mansourieh	3
Koukikhat	1	Zalqa	1
Machha	1	Miniyah Danieh	
Majdala	1	Aadoua	1
Memneaa	1	Assoun	4
Mhamarah / Nahr Bared / Abdeh	22	Ain El Tineh	1
Minlara	1	Bahsa	1
Mqyatea	1	Bakhawoun	4
Ouadi Jamous	11	Bhanine / Zouk Bhanine	7
Qaabrine / Tal Hayat	1	Btarmat	6
Qbalyat	1	Douniyya	1
Qlalyat Akkar	1	Kfar Chollane	2
Qobet Chamra	17	Kfar Habrou	1
Rahbeh	1	Mokubta	2
Ransiyeh / Deir Dalloum	1	Miniyah	18
Saadine	1	Qualiyeh	1
Tell Abbas Charqui	1	Qattine	3
Tleil	1	Rihanieh	35
Zouq Haddara	1	Sir Daniyah	5
Zouq Hosnieh	1	Saida	
Aley		Aanqoun	1
Aley		Bissatiyeh	4
Hay Selloum/Chouifat		Ghazieh	2
Baabda		Khawayeb	3
Ain Roummaneh	1	Saida	1
Borj Brajneh	1	Sawland	1
Ghbayreh/Chiyah/Sabra	1	Sour	
Hadath	1	Abbasiyeh	1
Haret Hreik	1	Deir Qanoun Ain	4
Kfar Chima	1	Baddawi	16
Mrejijh	1	Mina	7
Baalbeck		Qobbah	21
Arsal	27	Tripoli Bab Raml	1
Kfar Dabache	1	Tripoli Gardans	2
Khodr	1	Tripoli Haddadine	1
Temnine Faouqa	1	Tripoli Nouri	1
Temnine Tahta	1	Tripoli Souayya / Issaïn	3
Younine	1	Tripoli Tabbaneh	21
Batroun		Tripoli Zaitoun	15
Beirut		West Beqaa	
Achrafieh	1	Kamel laouz	1
Ain Miralssah	1	Kulaya	1
Hamra	1	Saghbine	1
Mdsour / Mar Mikhael	1	Zahleh	
Msaitbeh	1	Aali Nahri	2
Chouf		Bar Elias	2
Zaarouriyeh	1	Dalhameh	2
Jbeil		Hazuch Mandra	1
Amchit	1	Hawch Omara	7
Ehmej	1	Majdal Anjar	1
Fidar	1	Qob Elias	9
Halate	1	Raait	11
Jbeil	1	Saadnayel	11
Mastita	1	Taalabaya	2
		Zahleh Madaka	2
		Zghorta	
		Aalma	1
		Ardah	1
		Kfar Dhaqous	2
		Majdalya Zghorta	7
		Miriata / Faour	3
		Sebwal	1
		Zghorta	5