

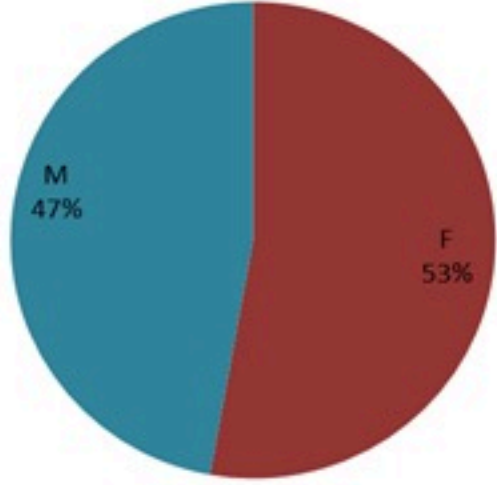
# ترصد الكوليرا في لبنان 21 شباط 2023

الجمهورية اللبنانية  
وزارة الصحة العامة  
برنامج الترصد الوبائي



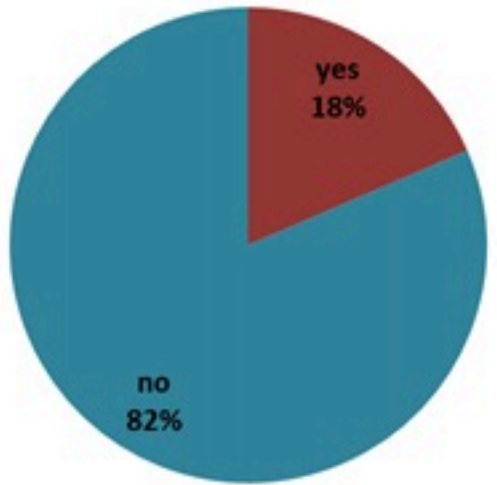
## الخطوط الساخنة

1760 (الصليب الأحمر)  
1787 (وزارة الصحة)



حسب الجنس  
(المشبهة والمتبنة)

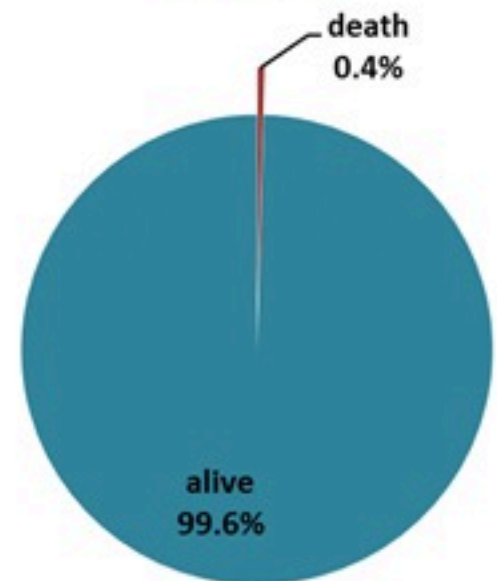
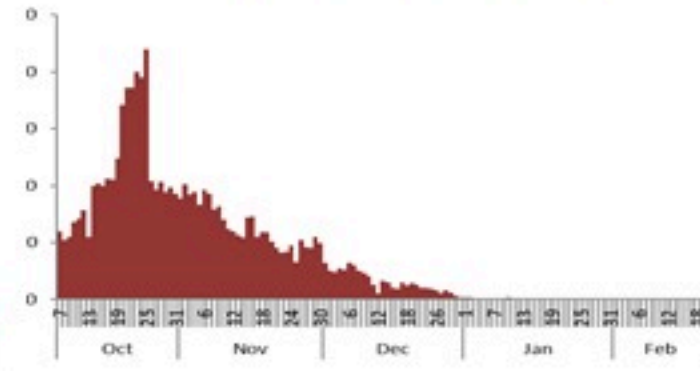
الوفيات (المتبنة)		الحالات المثبتة		كافة الحالات المشبهة والمتبنة	
التراكمي	الجديدة (آخر 24 ساعة)	التراكمي	الجديدة (آخر 24 ساعة)	التراكمي	الجديدة (آخر 24 ساعة)
23	0	671	0	6562	14



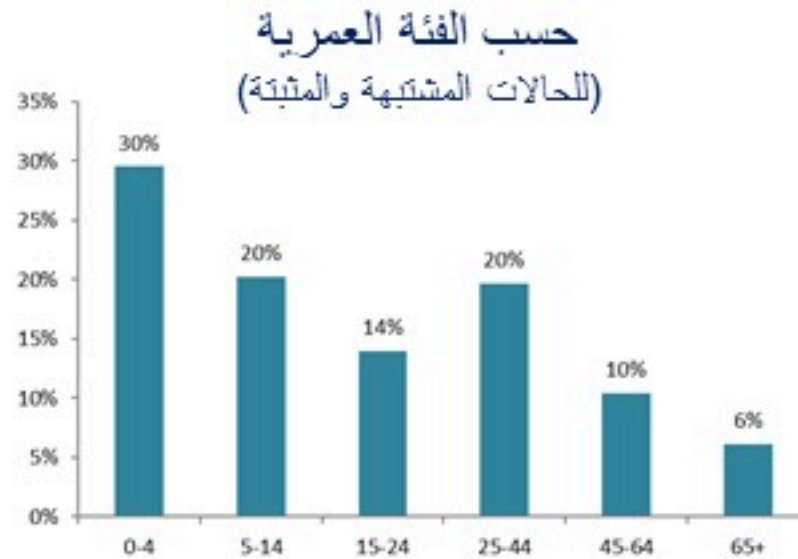
حسب الاستشفاء  
(المشبهة والمتبنة)



استعمال الاسرة الاستشفائية  
(للحالات المثبتة والمتبنة)



حسب تطور  
الحالة  
(المشبهة والمتبنة)



حسب البلدة  
(للحالات المثبتة)



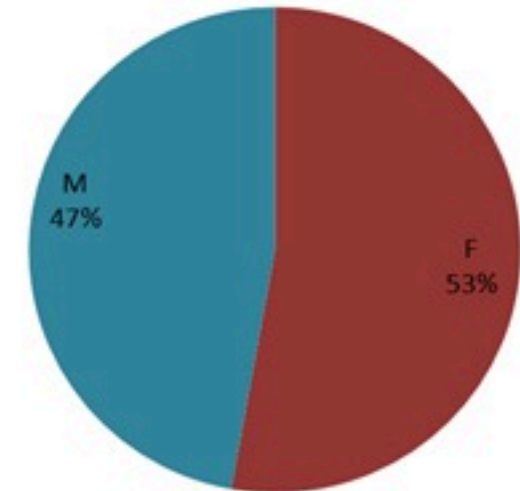
# Cholera Surveillance Report

## 21 Feb 2023

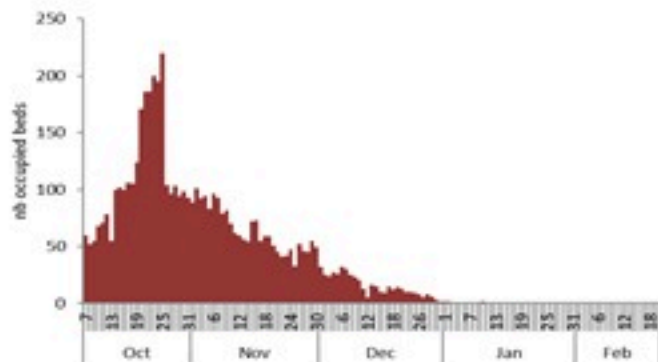
**Call Centers**  
 1760 (Red Cross)  
 1787 (MOPH)

All cases (suspected and confirmed)		Confirmed Cases		Deaths (confirmed)	
New (past 24 h)	Cumulative	New (past 24 h)	Cumulative	New	Cumulative
<b>14</b>	<b>6562</b>	<b>0</b>	<b>671</b>	<b>0</b>	<b>23</b>

By Sex  
(suspected and confirmed)



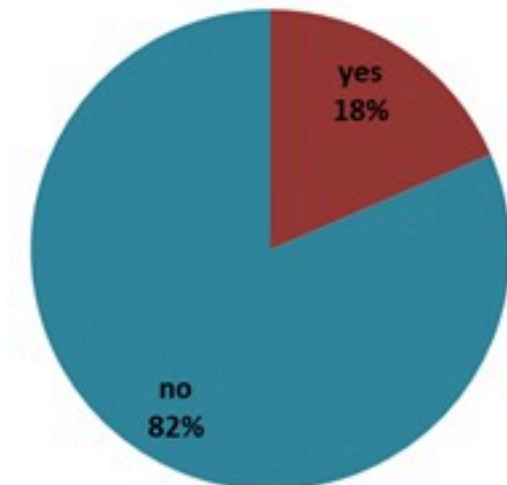
Occupied hospital beds  
(suspected and confirmed)



By date of report  
(suspected and confirmed)



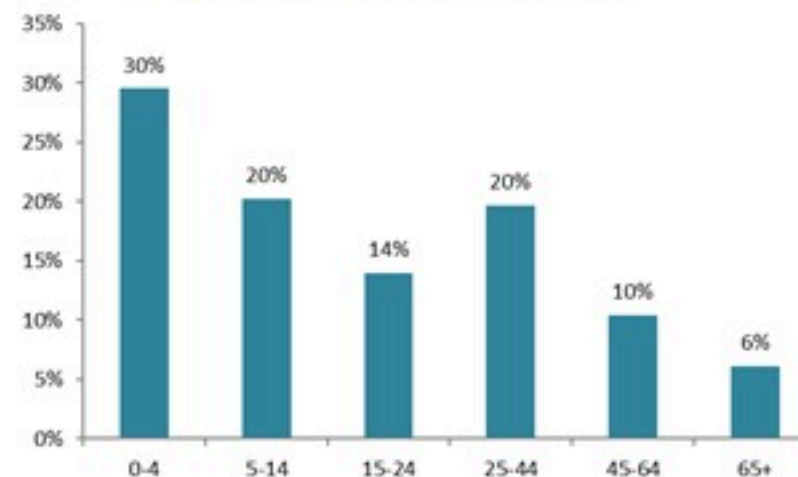
By Hospital Admission  
(suspected and confirmed)



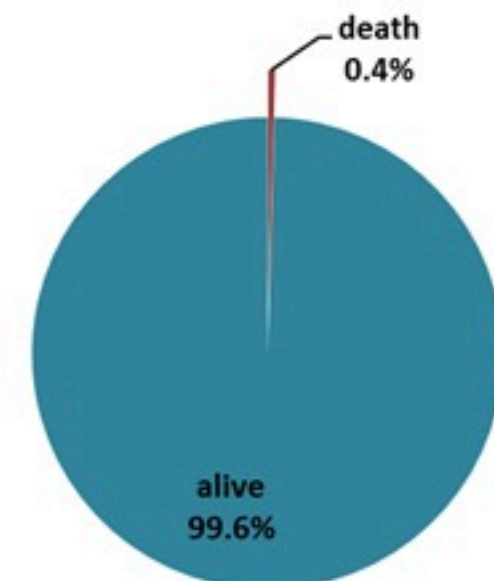
By locality (confirmed cases)



By age group  
(suspected and confirmed cases)



By Outcome  
(suspected and confirmed)

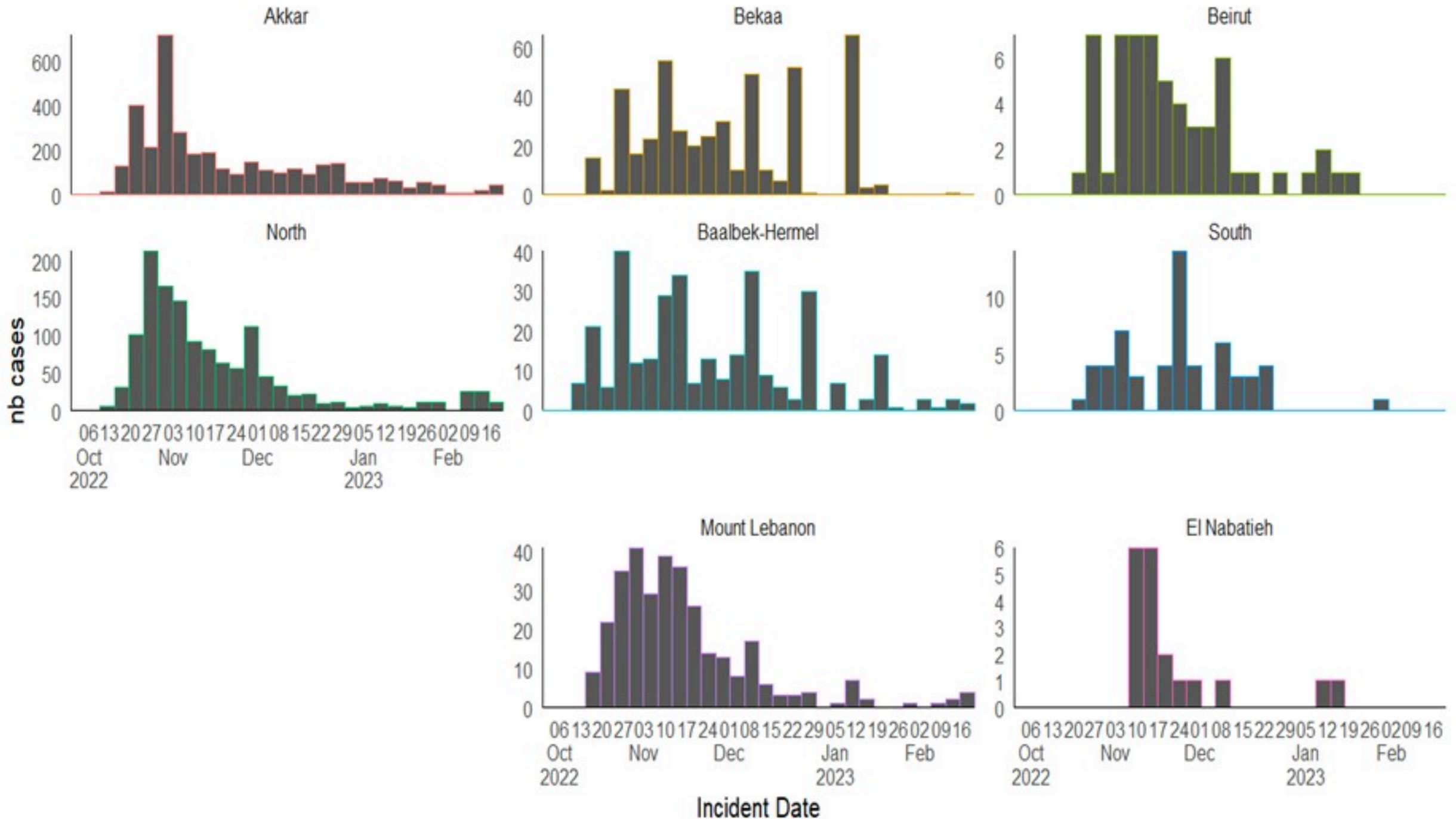




# Cholera Surveillance Report

## 21 Feb 2023

Epicurves by date of reporting by province  
(suspected and confirmed)



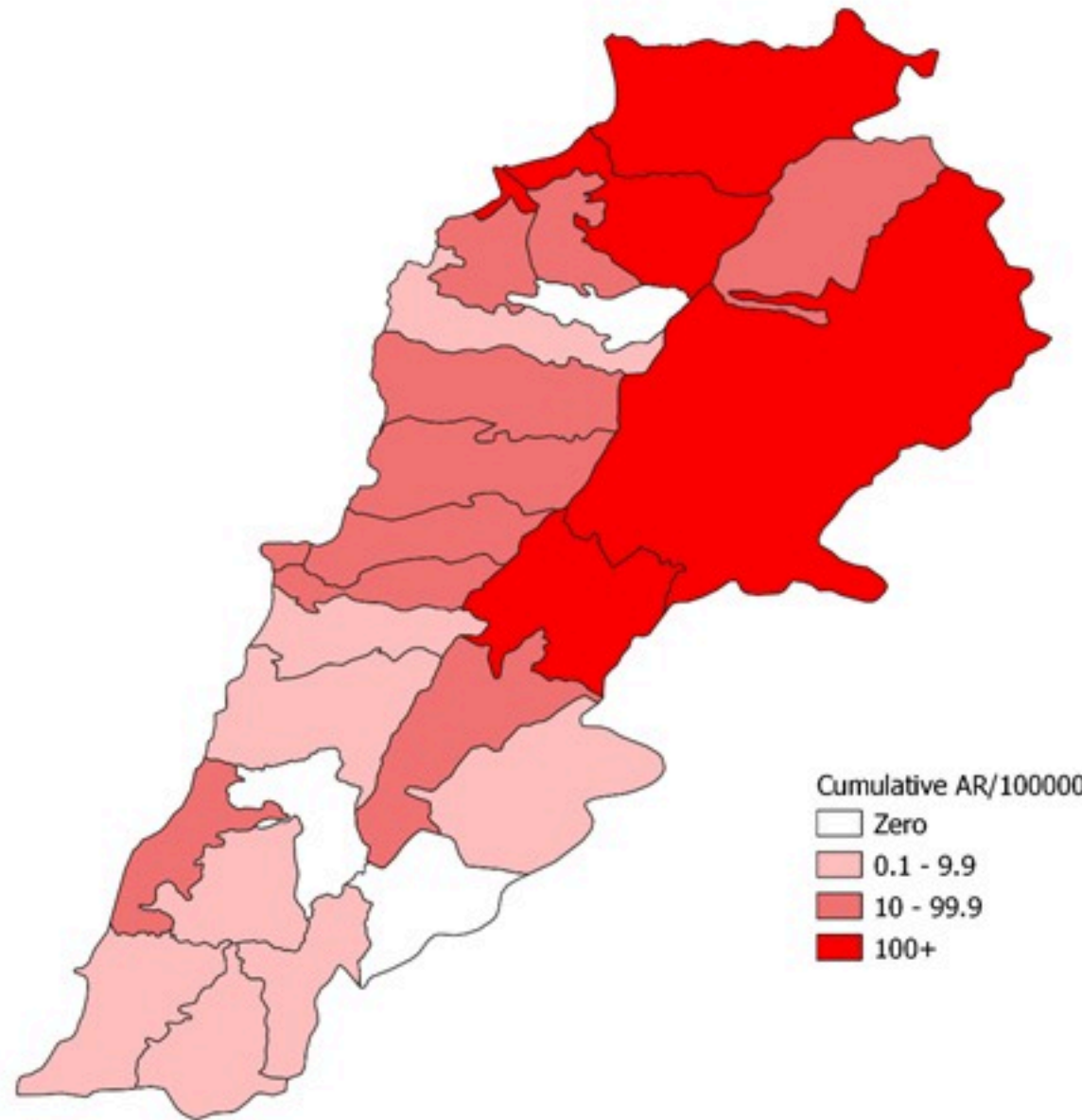
# Cholera Surveillance Update

21 Feb 2023

4

Cumulative Attack Rate per 100,000 (suspected and confirmed)

نسبة الحدوث التراكمية لكل مئة ألف نسمة (الحالات المشتبهية والمثبتة)

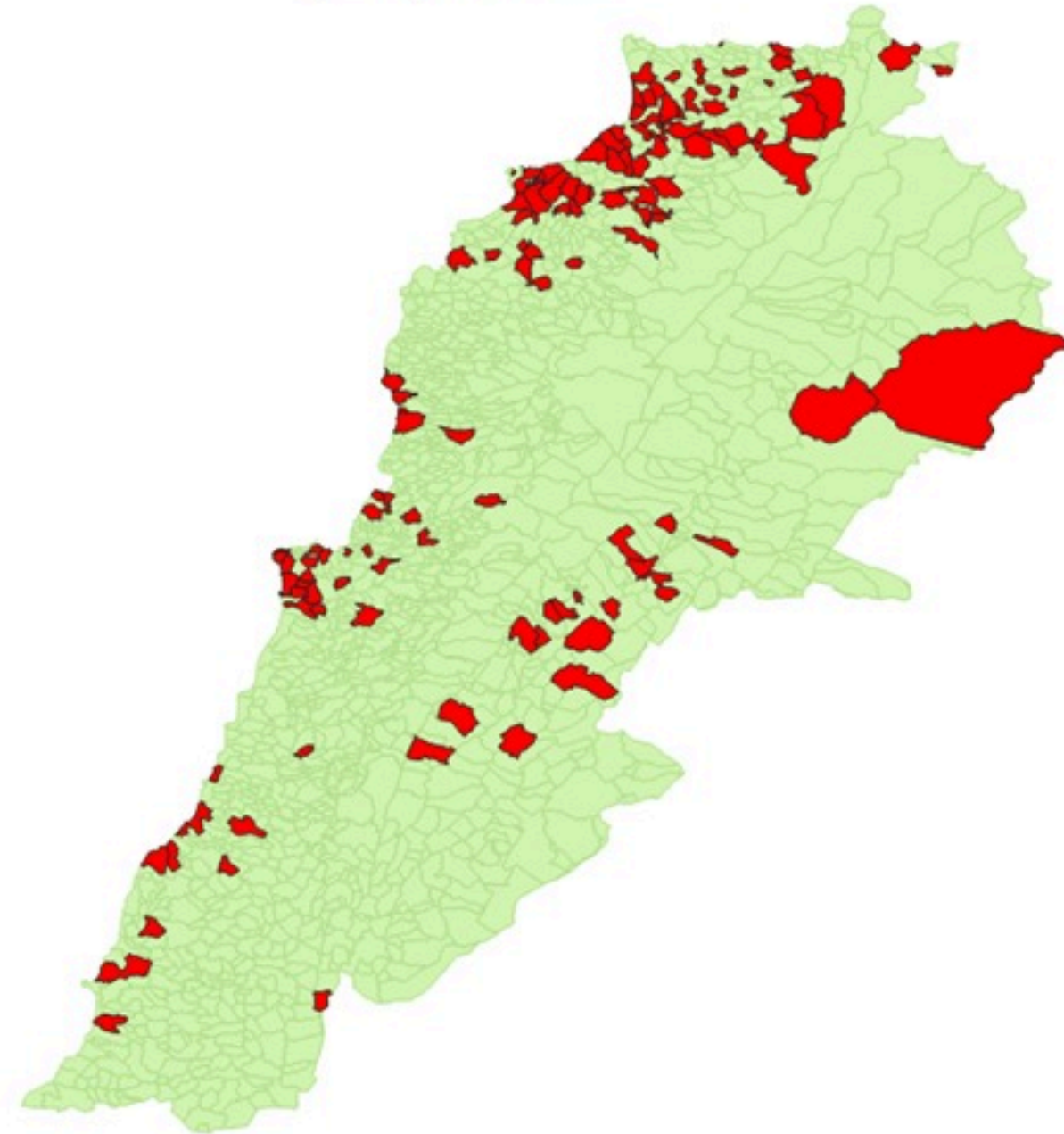




# Cholera Surveillance Update

## 21 Feb 2023

By locality (confirmed)  
حسب البلدة (المتبئة)



Figures in table are subject to modification following updates and data correction

Caza	Locality	Cases	Caza	Locality	Cases	
Akkar	Akkar Atika	1	Kiswan	Aintouna	1	
	Amayer/Quadi Khaled	1		Ballounh	1	
	Arqa / Marlayet Haddara	2		Bqatouta	7	
	Bebnine / Baddoua	16		Ghair	2	
	Beit Hajj/Koucha/Khreibit Jindi	1		Jounieh Ghadir	4	
	Bergayel	1		Jounieh Sabra	4	
	Bezbina	1		Yahchouch	1	
	Birch	2		Zouk Mosbeh	3	
	Bqerzia	1		Kouna	Aaba	1
	Cheikh Ayache / Chir Hmairine	1			Aufdiq	1
	Dahr Qambar /Hokr Gatteh	1			Basa	1
	Dabadab	1	Bsama		1	
	Dinbou	2	Dahr Ain / Ras Masqua		1	
	Fneydek	2	Rachdibbine		1	
	Halba	1	Kfar Aqa		1	
	Hayssa	1	Aadayssah		1	
	Hocouich	1	Marjoun		Biklaya	1
	Jdeidat Qaytee	1			Broummata	1
	Kfar Harra	4		Bsalim	1	
	Kfar Melki	1		Daruna/Borj Hammoud	2	
	Khane Hayat	1		Mansourieh	3	
	Khirbet Char	2		Zalqa	1	
	Kneisset Hnaldar	1		Minieh Danieh	Aadoua	1
	Kouachra	1	Assoun		4	
	Koukikhat	2	Ain El Timh		1	
	Machha	2	Bahsa		1	
	Majdala	1	Bakhaoum		4	
	Memneaa	1	Bhanine / Zouk Bhanine		7	
	Mhamarah / Nahr Bared / Abdeh	22	Btamar		6	
	Minlara	1	Douniya		1	
	Mqyatea	1	Kfar Chollane		2	
	Ouadi Jamous	11	Kfar Habou		1	
	Qaabrine / Tal Hayat	1	Makabta		2	
Qbalyat	1	Minieh	18			
Qlayat Akkar	2	Qouatiyeh	1			
Qobet Chamra	17	Qatime	3			
Rahbeh	1	Rihanieh	35			
Ransiyeh / Deir Dalloum	1	Sir Dannieh	5			
Saadine	4	Saïda	Aanqoun		1	
Tell Abbas Charqui	2		Bissariyeh		4	
Tieil	1		Ghazieh	2		
Zouq Haddara	1		Khawayeb	3		
Zouq Hosnieh	1		Saïda	1		
Aley	Aley		1	Sawand	1	
	Hay Selloum/Chouifat		1	Sour	Abbassiyeh	1
Baabda	Ain Roumanneh	1	Deir Qaroun Ain		4	
	Borj Brajneh	3	Tropoli	Badawi	16	
	Ghbayroh/Chiyah/Sabra	2		Mina	7	
	Hadath	1		Qobbah	21	
	Haret Hireik	1		Tripoli Bab Raml	1	
	Kfar Chima	1		Tripoli Gardans	2	
Mrejijh	2	Tripoli Haddadine		1		
Baalbeck	Arsal	27		Tripoli Nouri	1	
	Kfar Dabache	2	Tripoli Souayqa / Assan	3		
	Khodr	2	Tripoli Tabbaneh	21		
	Temnine Faouqa	1	Tripoli Zaitoun	15		
	Temnine Tahta	1	West Beqaa	Kamel Jaruz	1	
Younine	1	Kufaya		1		
Batroun	Chikka	1		Saghbine	1	
	Achrafieh	2		Zahleh	Aali Nahri	2
Beirut	Ain Miralssch	1			Bar Elias	2
	Hamra	1			Dalhamieh	2
	Mdsouar / Mar Mikhael	1			Hazuch Mandra	1
	Msaitbeh	1	Hawch Omara		7	
	Chouf	Zaarouriyeh	1		Majdal Anjar	1
Jbeil		Amchit	1		Qob Elias	9
		Ehmej	1		Raait	11
		Fidar	1		Saadnayl	11
		Halate	1		Talabaya	2
	Jbeil	1	Zahleh Madaka		2	
Mastita	1	Zghorta	Aalma	1		
Kiswan	Andeh		1	Kfar Dazous	2	
	Kfar Dazous		2	Majdalya Zghorta	7	
	Majdalya Zghorta		7	Miriata / Fozur	3	
	Miriata / Fozur		3	Sebwa	1	
	Sebwa		1	Zghorta	5	
	Zghorta	5				



# Cholera weekly incidence rate/100,000

