

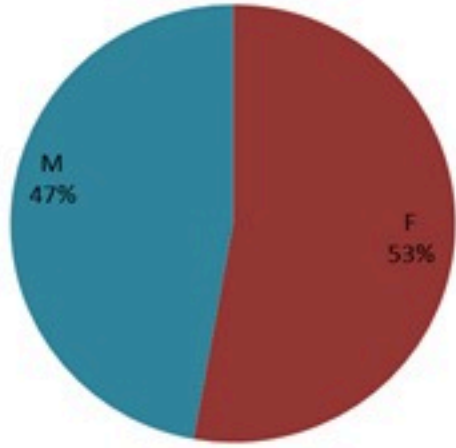
ترصد الكوليرا في لبنان 16 كانون الاول 2022

الجمهورية اللبنانية
وزارة الصحة العامة
برنامج الترصد الوبائي

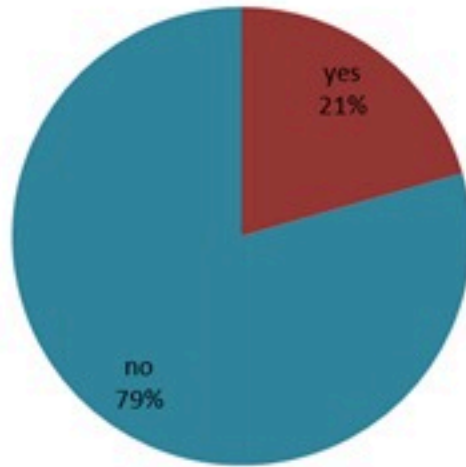


الخطوط الساخنة

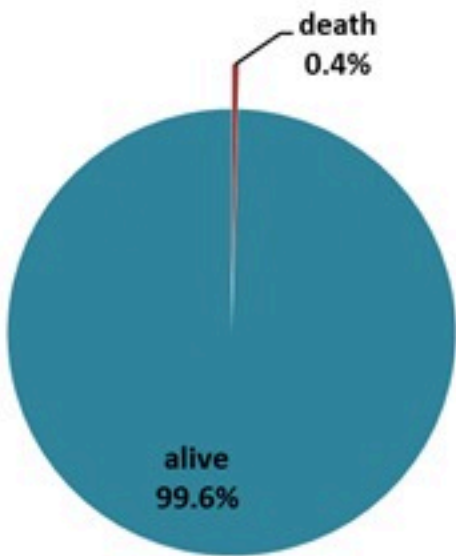
1760 (الصليب الأحمر)
1787 (وزارة الصحة)



حسب الجنس
(المشبهة والمتبنة)



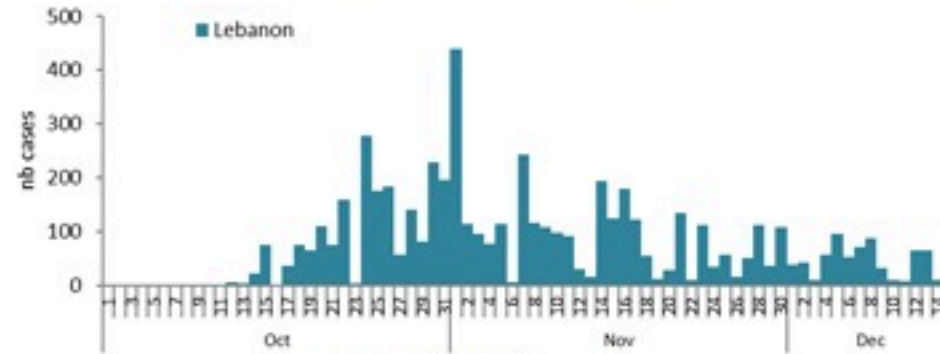
حسب الاستشفاء
(المشبهة والمتبنة)



حسب تطور الحالة
(المشبهة والمتبنة)

الوفيات (المتبنة)		الحالات المثبتة		كافة الحالات المشبهة والمتبنة	
التراكمي	الجديدة (آخر 24 ساعة)	التراكمي	الجديدة (آخر 24 ساعة)	التراكمي	الجديدة (آخر 24 ساعة)
23	0	661	0	5294	40

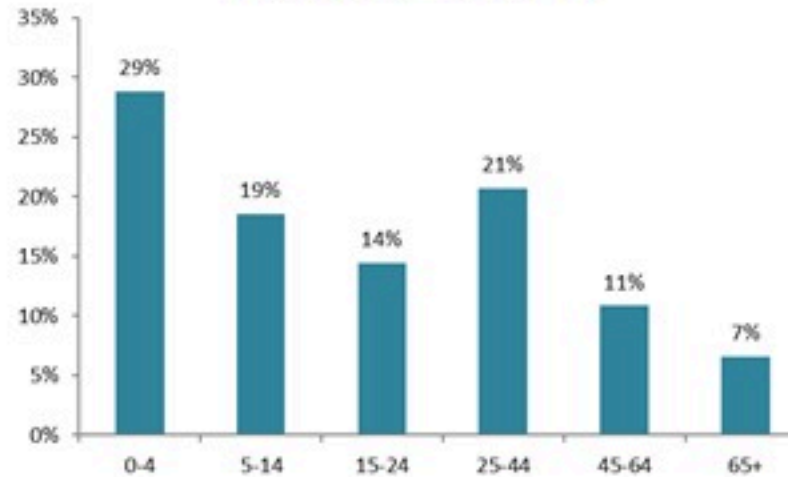
حسب تاريخ الإبلاغ
(للحالات المثبتة والمتبنة)



استعمال الاسرة الاستشفائية
(للحالات المثبتة والمتبنة)



حسب الفئة العمرية
(للحالات المشبهة والمتبنة)



حسب البلدة
(للحالات المثبتة)



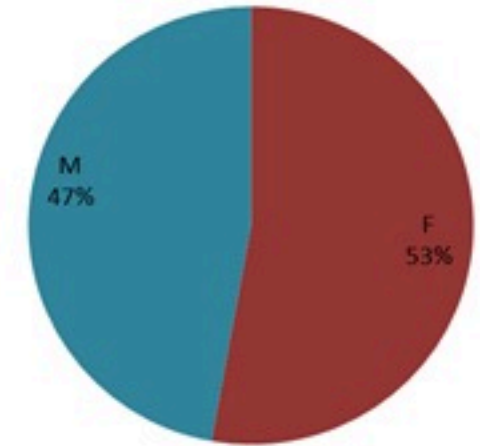
Cholera Surveillance Report

16 Dec 2022

Call Centers
 1760 (Red Cross)
 1787 (MOPH)

All cases (suspected and confirmed)		Confirmed Cases		Deaths (confirmed)	
New (past 24 h)	Cumulative	New (past 24 h)	Cumulative	New	Cumulative
40	5294	0	661	0	23

By Sex
(suspected and confirmed)



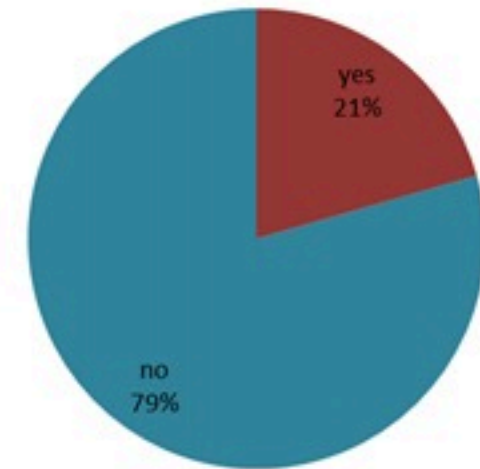
Occupied hospital beds
(suspected and confirmed)



By date of report
(suspected and confirmed)



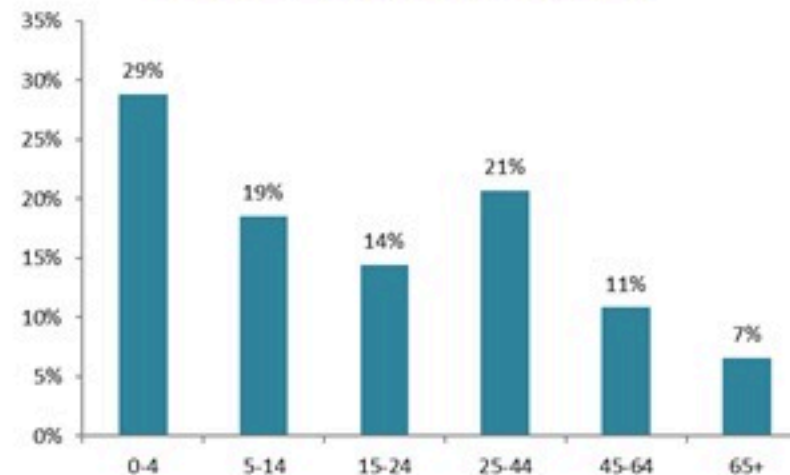
By Hospital Admission
(suspected and confirmed)



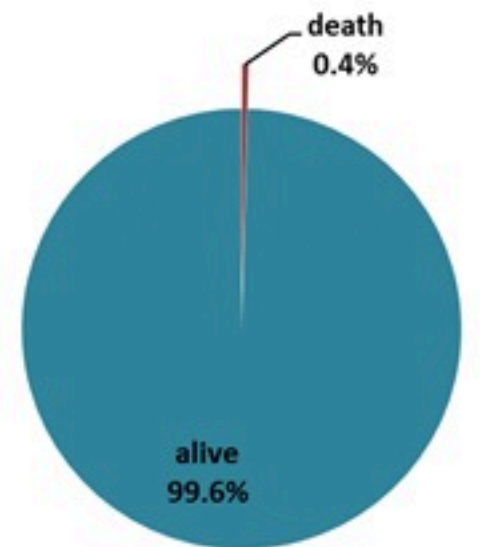
By locality (confirmed cases)



By age group
(suspected and confirmed cases)



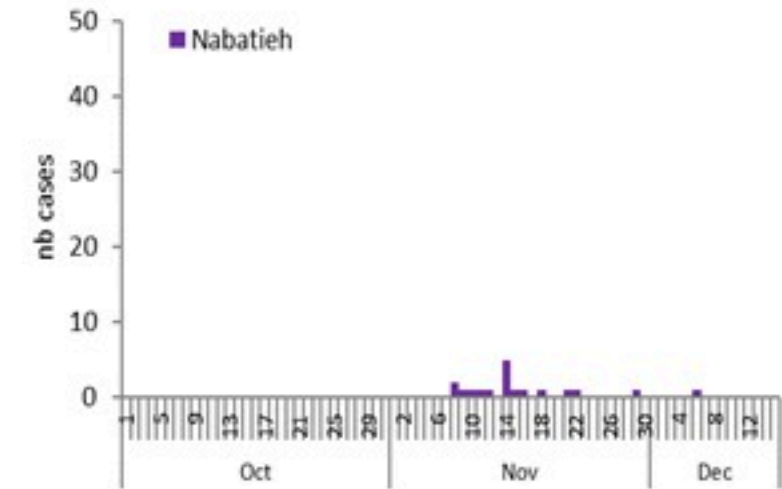
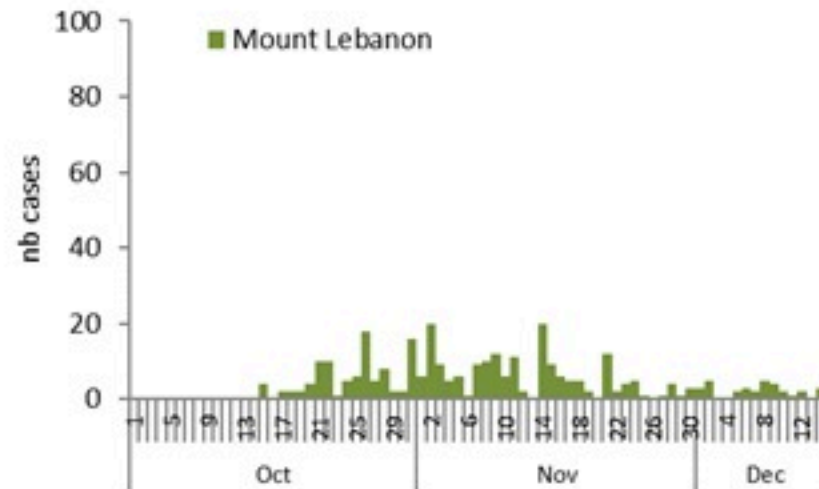
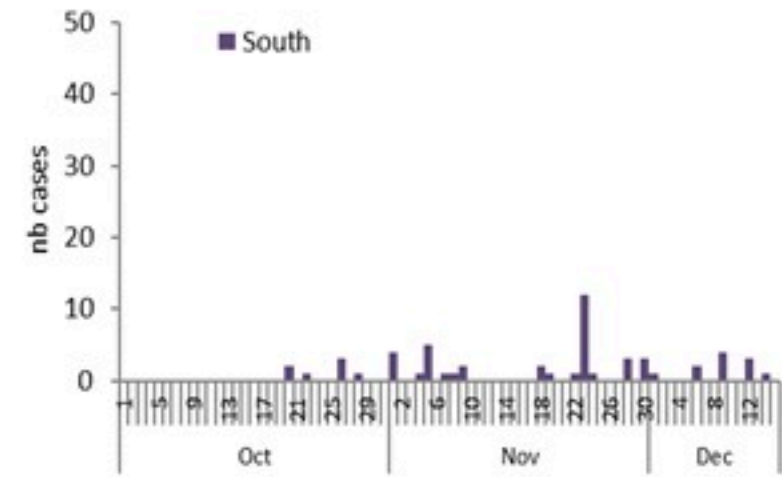
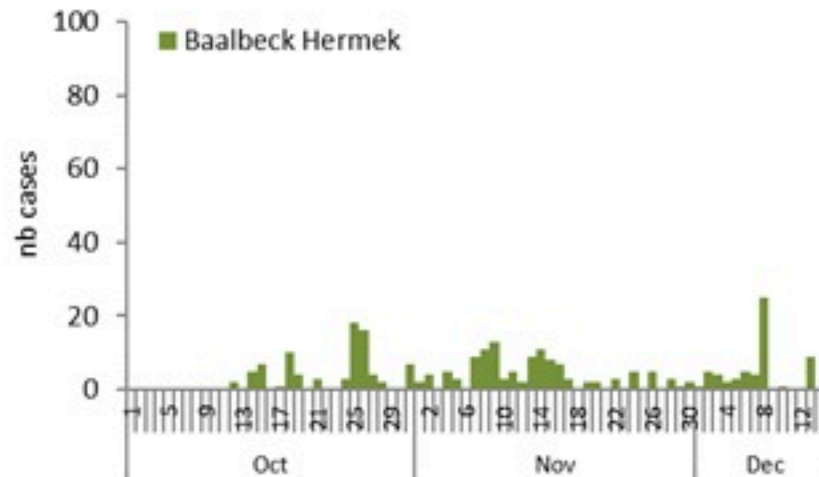
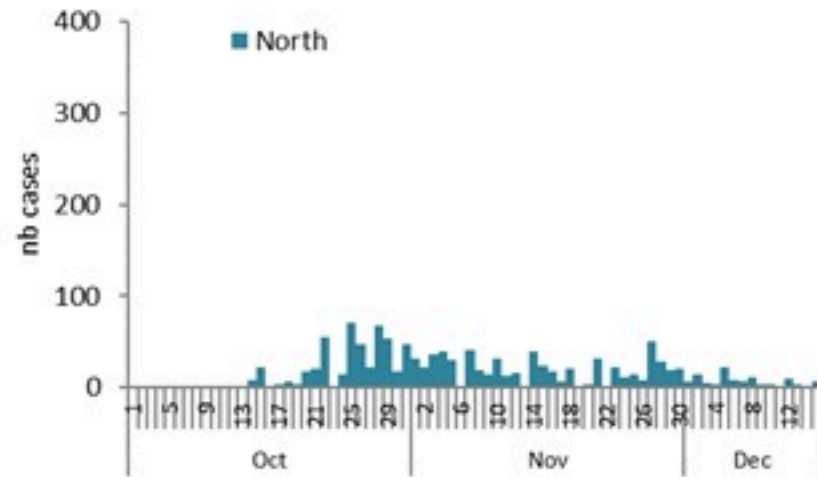
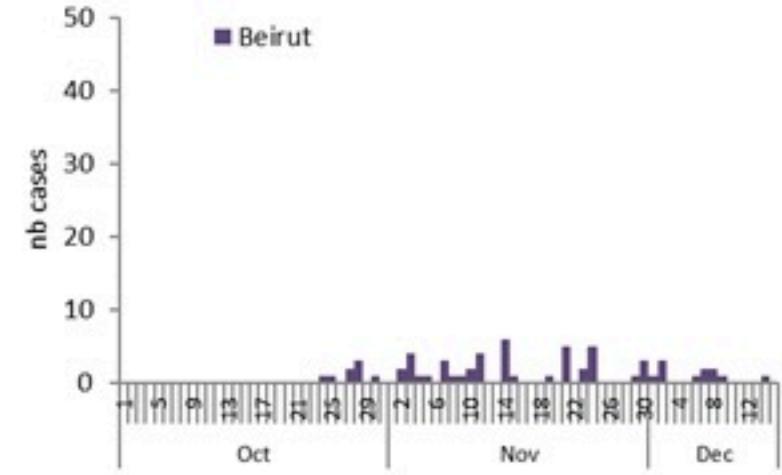
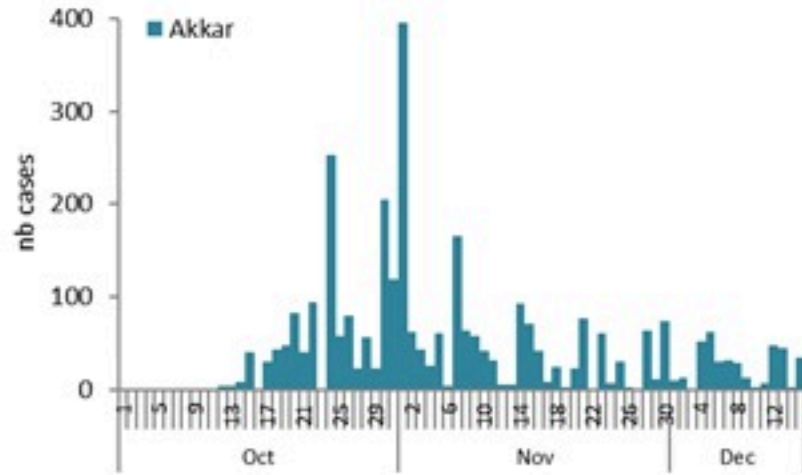
By Outcome
(suspected and confirmed)



Cholera Surveillance Report

16 Dec 2022

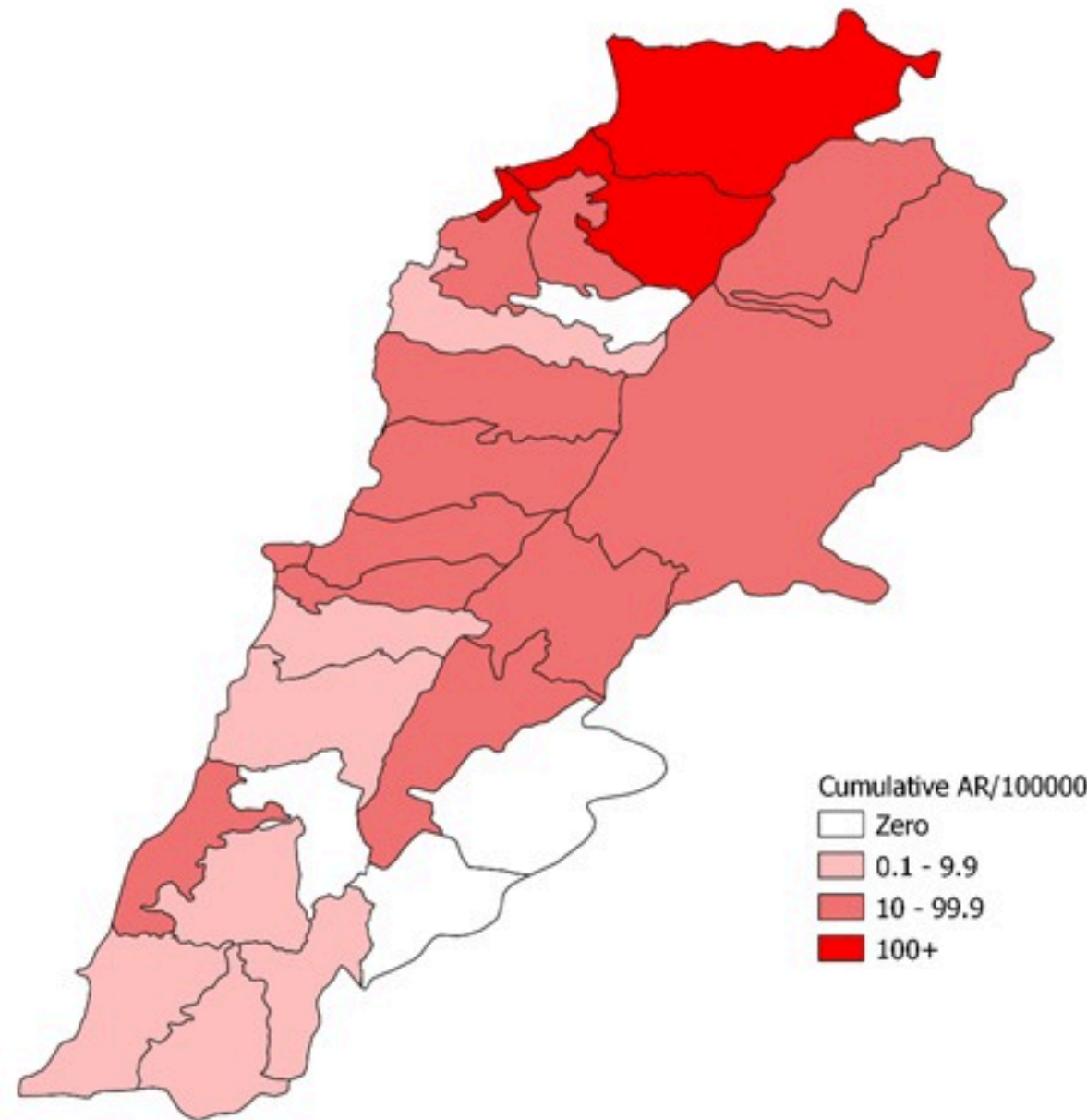
Epicurves by date of reporting by province (suspected and confirmed)



Cholera Surveillance Update

16 Dec 2022

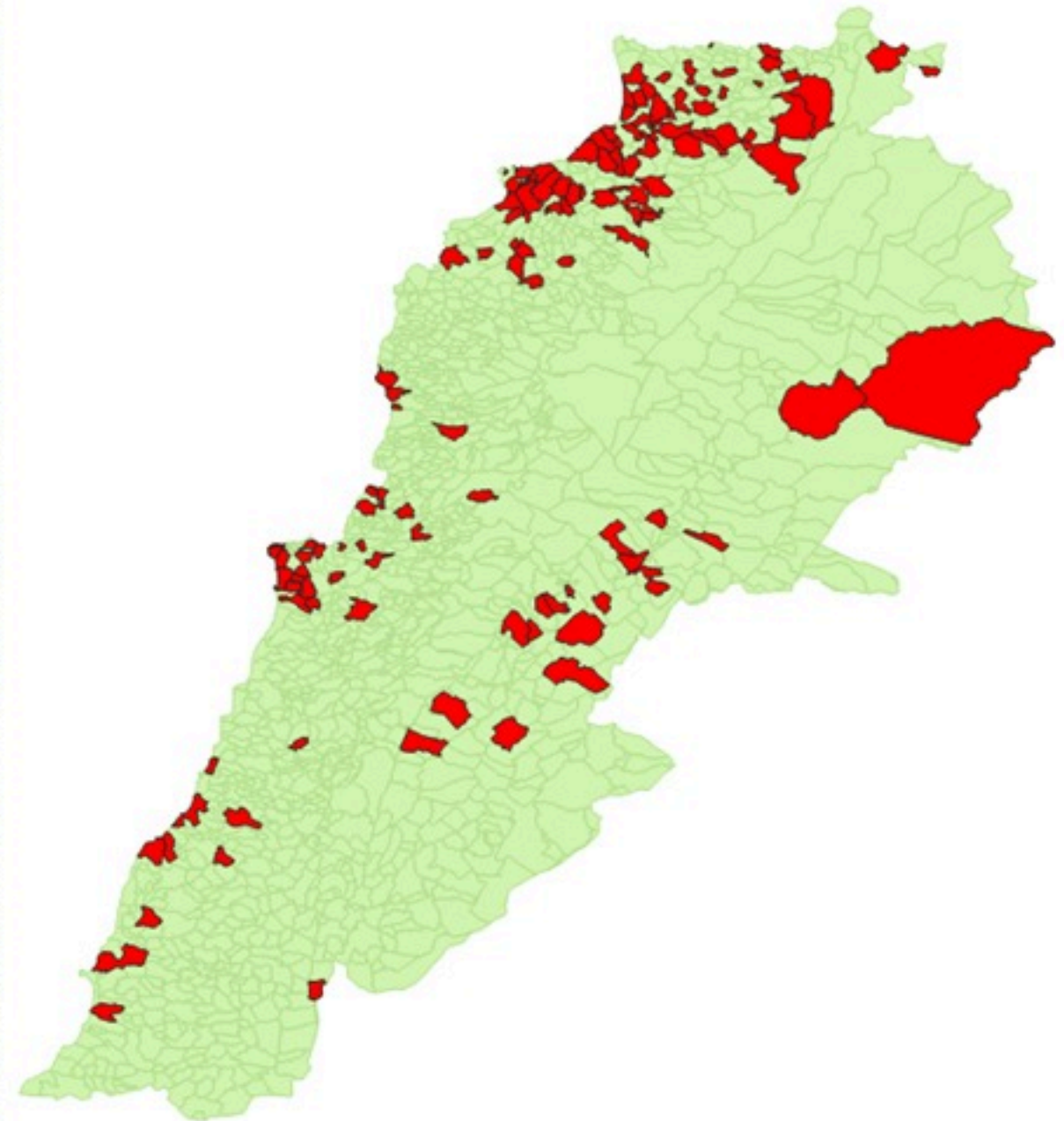
Cumulative Attack Rate per 100,000 (suspected and confirmed)
نسبة الحدوث التراكمية لكل مئة ألف نسمة (الحالات المشتبهية والمثبتة)



Cholera Surveillance Update

16 Dec 2022

By locality (confirmed)
حسب البلدة (المتبئة)



Figures in table are subject to modification following updates and data correction

Locality	Cases	Locality	Cases
Akkar Atika	1	Ainboua	1
Amayer/Quadi Khaled	1	Balfounh	1
Arqa / Marlayet Haddara	2	Bqawtula	7
Bebnine / Baddoua	160	Ghazir	2
Beit Hajj/Koucha/Khrelbit Jindi	3	Jounieh Ghadir	4
Berqayel	0	Jounieh Sabba	4
Bezina	1	Yahchouch	1
Birch	2	Zouk Mosbeh	3
Bqerzla	1	Auba	1
Cheikh Ayache / Chir Hmairine	3	Aufdiq	1
Dahr Qambar /Hokr Qatfeh	1	Basa	1
Dabadab	1	Bsama	1
Dinbou	2	Dahr Ain / Ras Masqua	1
Fneydek	1	Rachdibbine	1
Halba	1	Kfar Aqa	1
Hayssa	1	Adayssah	1
Hocuich	3	Biklaya	1
Jdeidat Qaytee	3	Broummiana	1
Kfar Harra	4	Bsalim	1
Kfar Melki	1	Daruna/Borj Hammoud	2
Khane Hayat	1	Mansourish	3
Khirbet Char	2	Zalqa	1
Kneisset Hnaldar	1	Aadoua	1
Kouchra	1	Assoun	4
Kouekhat	2	Ain El Timh	1
Machha	2	Bahsa	1
Majdala	2	Bakhaoum	4
Memneaa	1	Bhanine / Zouk Bhanine	7
Mhamarah / Nahr Bared / Abdeh	22	Bamaa	6
Minlara	3	Douniya	1
Mqyatec	1	Kfar Chellane	2
Ouadi Jamous	11	Kfar Habou	1
Qaabrine / Tal Hayat	7	Makubta	2
Qbalyat	1	Minieh	18
Qlayat Akkar	2	Quatlyeh	1
Qobet Chamra	17	Qattine	3
Rahbeh	1	Rihanish	35
Ranslyeh / Deir Dalloum	1	Sir Danniish	5
Saadine	4	Aenqoun	1
Tell Abbas Charqui	2	Bissariyeh	1
Tleil	1	Ghazish	2
Zouq Haddara	1	Khawayeb	3
Zouq Hosnich	3	Saida	1
Aley	1	Sawfand	1
Hay Selloum/Chouefat	1	Abbaweyh	1
Baabda	1	Dair Qaroun Ain	4
Ain Roummaneh	1	Badawi	16
Borj Brajneh	3	Mina	7
Ghbayreh/Chiyah/Sabra	2	Qobbah	21
Hadath	3	Tripoli Bab Raml	1
Haret Hreik	1	Tripoli Gardans	1
Kfar Chima	1	Tripoli Haddadine	1
Mrejijh	2	Tripoli Nouri	1
Baalbeck	27	Tripoli Souayqa / Asraen	3
Kfar Dabache	2	Tripoli Tabbaneh	20
Khodr	2	Tripoli Zaitoun	15
Temnine Faouqa	1	West Beqaa	1
Temnine Tahta	9	Kamel Jaruz	1
Younine	1	Kufaya	1
Batroun	1	Saghbine	1
Beirut	2	Zahleh	2
Achrafieh	1	Aali Nahri	2
Ain Mraissch	1	Bar Elias	2
Hamra	1	Dalhamish	1
Mdaouar / Mar Mikhael	1	Haruch Mandra	1
Msalibeh	1	Hawch Omara	7
Chouf	1	Majdal Anjar	1
Jbeil	1	Qob Elias	9
Zaarouriyeh	1	Raait	11
Amchit	1	Saadnayd	11
Ehmej	1	Talabaya	2
Jbeil	1	Zahleh Madaka	2
Mastita	2	Zghorta	1
		Aalma	1
		Andeh	1
		Kfar Dhaqous	2
		Majdalya Zghorta	7
		Miriata / Fazar	3
		Sabwad	1
		Zghorta	5