

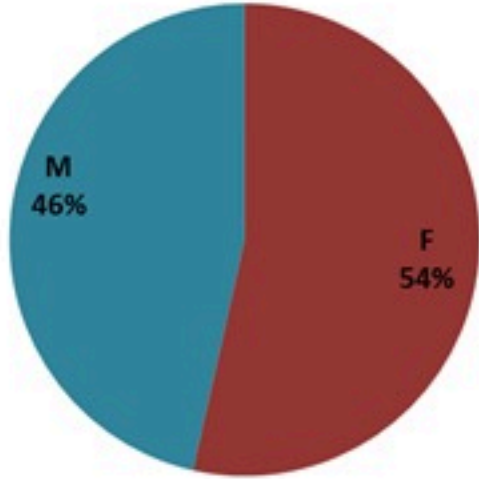
ترصد الكوليرا في لبنان 14 اذار 2023

الجمهورية اللبنانية
وزارة الصحة العامة
برنامج الترصد الوبائي



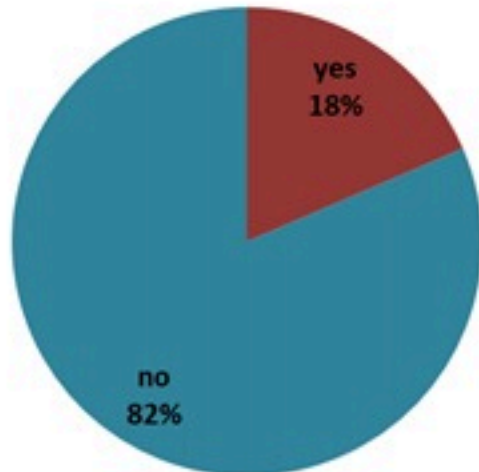
الخطوط الساخنة

1760 (الصليب الأحمر)
1787 (وزارة الصحة)



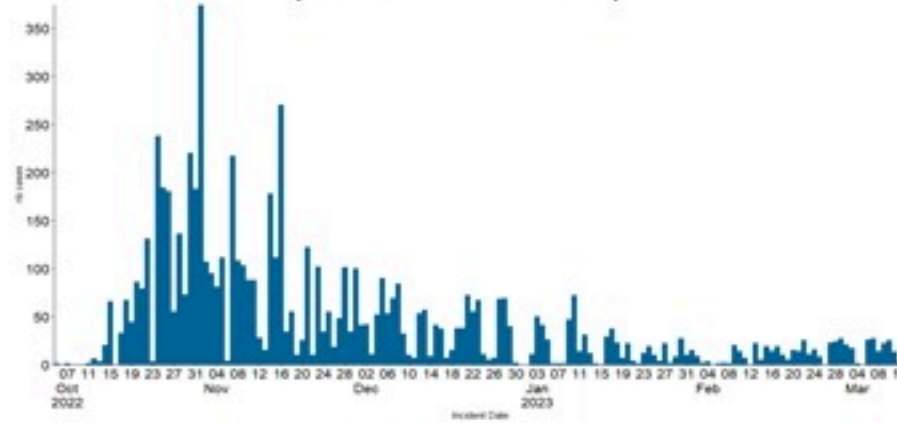
حسب الجنس
(المشبهة والمتبنة)

الوفيات (المتبنة)		الحالات المتبنة		كافة الحالات المشبهة والمتبنة	
التراكمي	الجديدة (آخر 24 ساعة)	التراكمي	الجديدة (آخر 24 ساعة)	التراكمي	الجديدة (آخر 24 ساعة)
23	0	671	0	6910	24

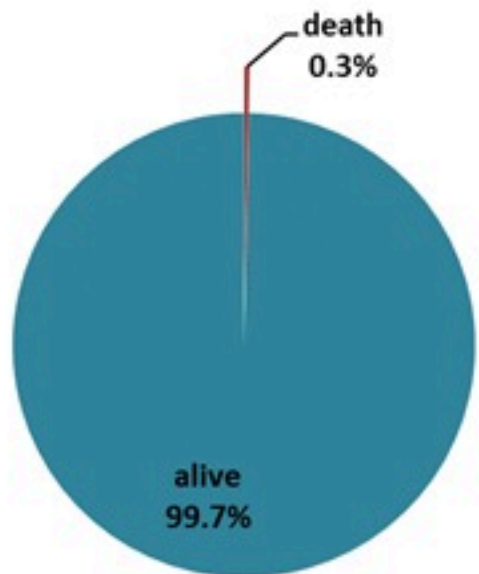
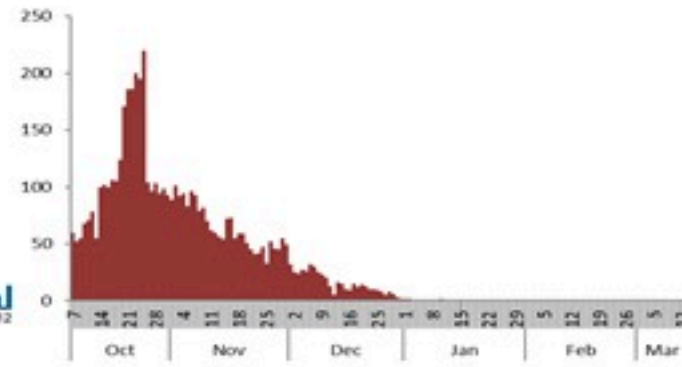


حسب الاستشفاء
(المشبهة والمتبنة)

حسب تاريخ الإبلاغ
(للحالات المتبنة والمتبنة)

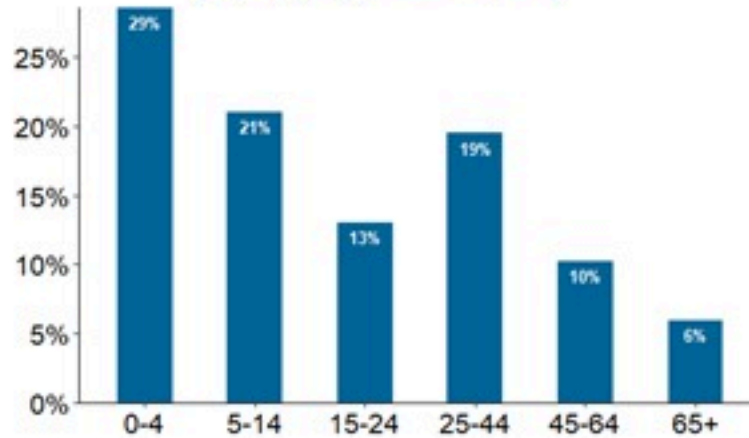


استعمال الاسرة الاستشفائية
(للحالات المتبنة والمتبنة)



حسب تطور
الحالة
(المشبهة والمتبنة)

حسب الفئة العمرية
(للحالات المشبهة والمتبنة)



حسب البلدة
(للحالات المتبنة)



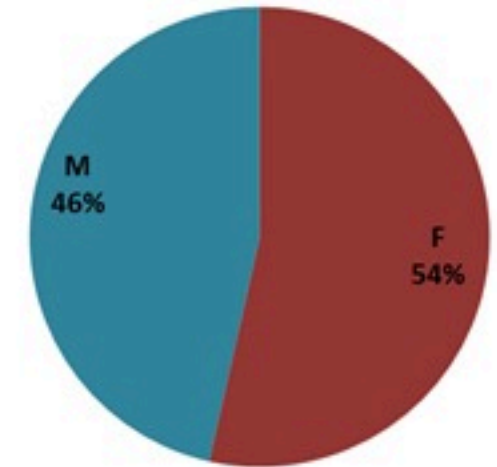
Cholera Surveillance Report

14 Mar 2023

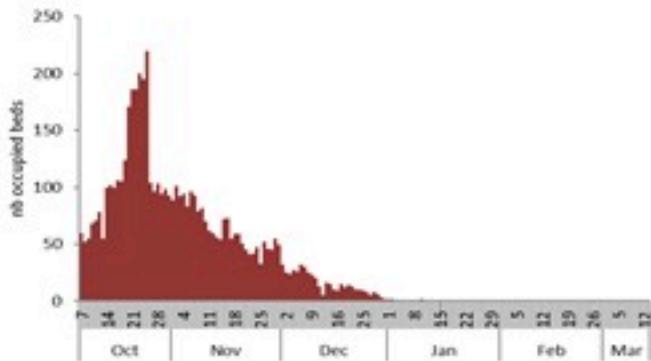
Call Centers
 1760 (Red Cross)
 1787 (MOPH)

All cases (suspected and confirmed)		Confirmed Cases		Deaths (confirmed)	
New (past 24 h)	Cumulative	New (past 24 h)	Cumulative	New	Cumulative
24	6910	0	671	0	23

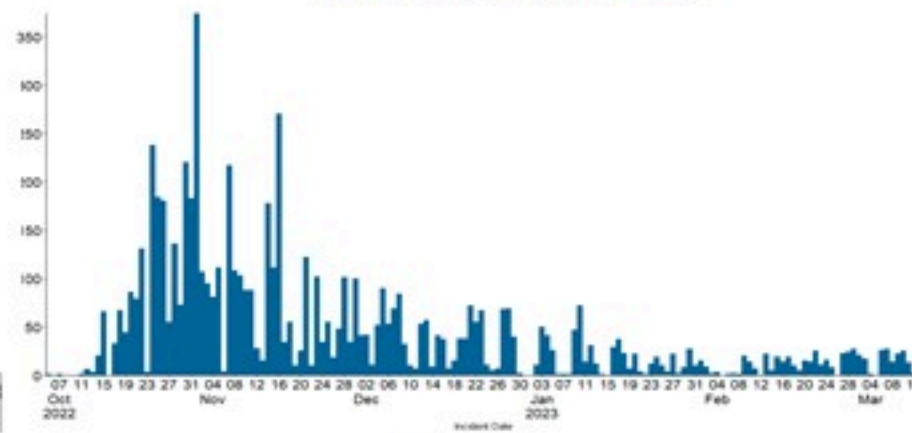
By Sex
(suspected and confirmed)



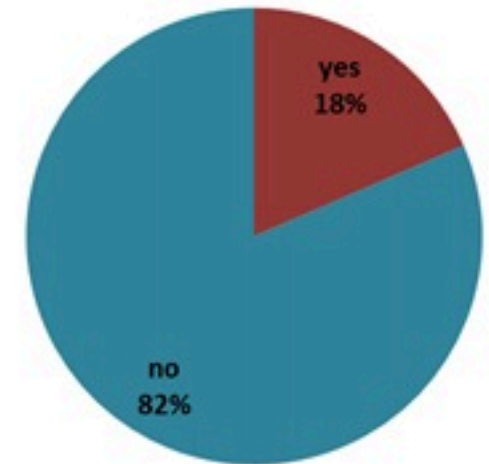
Occupied hospital beds
(suspected and confirmed)



By date of report
(suspected and confirmed)



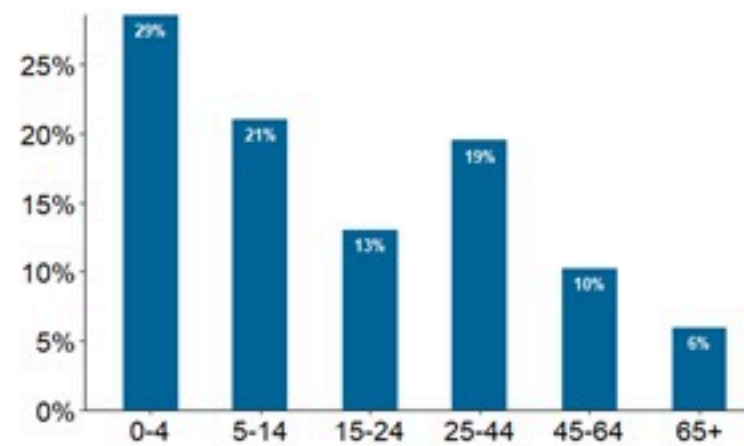
By Hospital Admission
(suspected and confirmed)



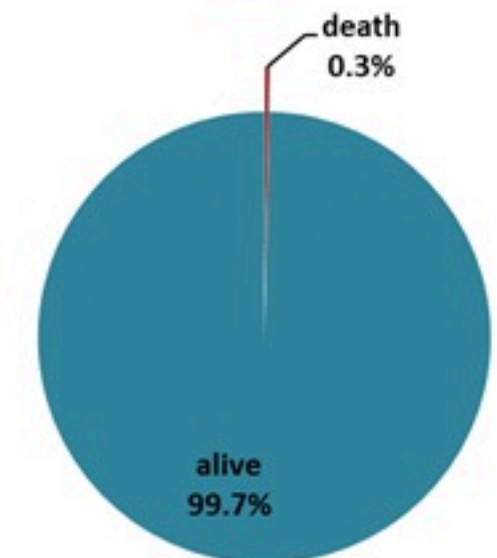
By locality (confirmed cases)



By age group
(suspected and confirmed cases)



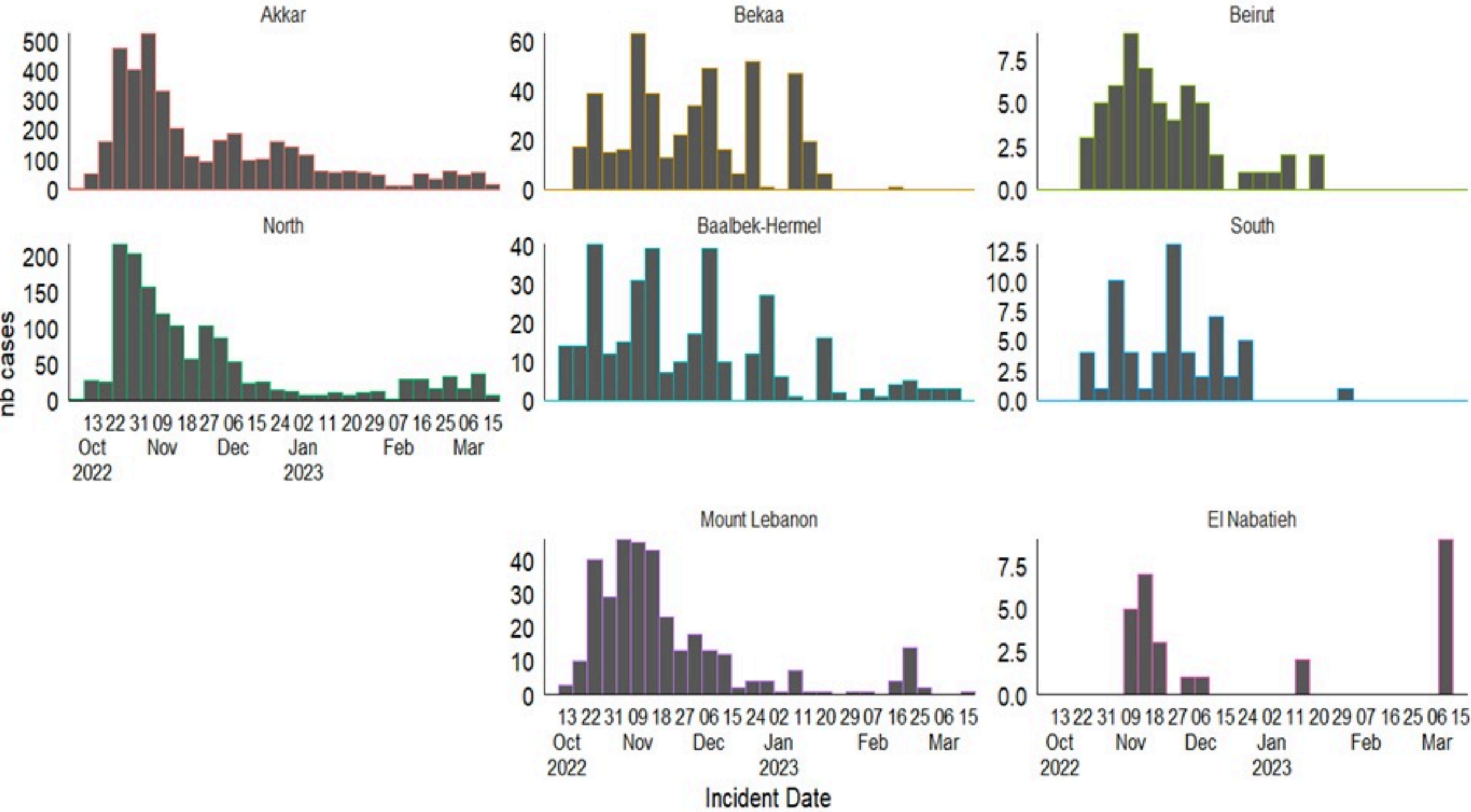
By Outcome
(suspected and confirmed)



Cholera Surveillance Report

14 Mar 2023

Epicurves by date of reporting by province
(suspected and confirmed)

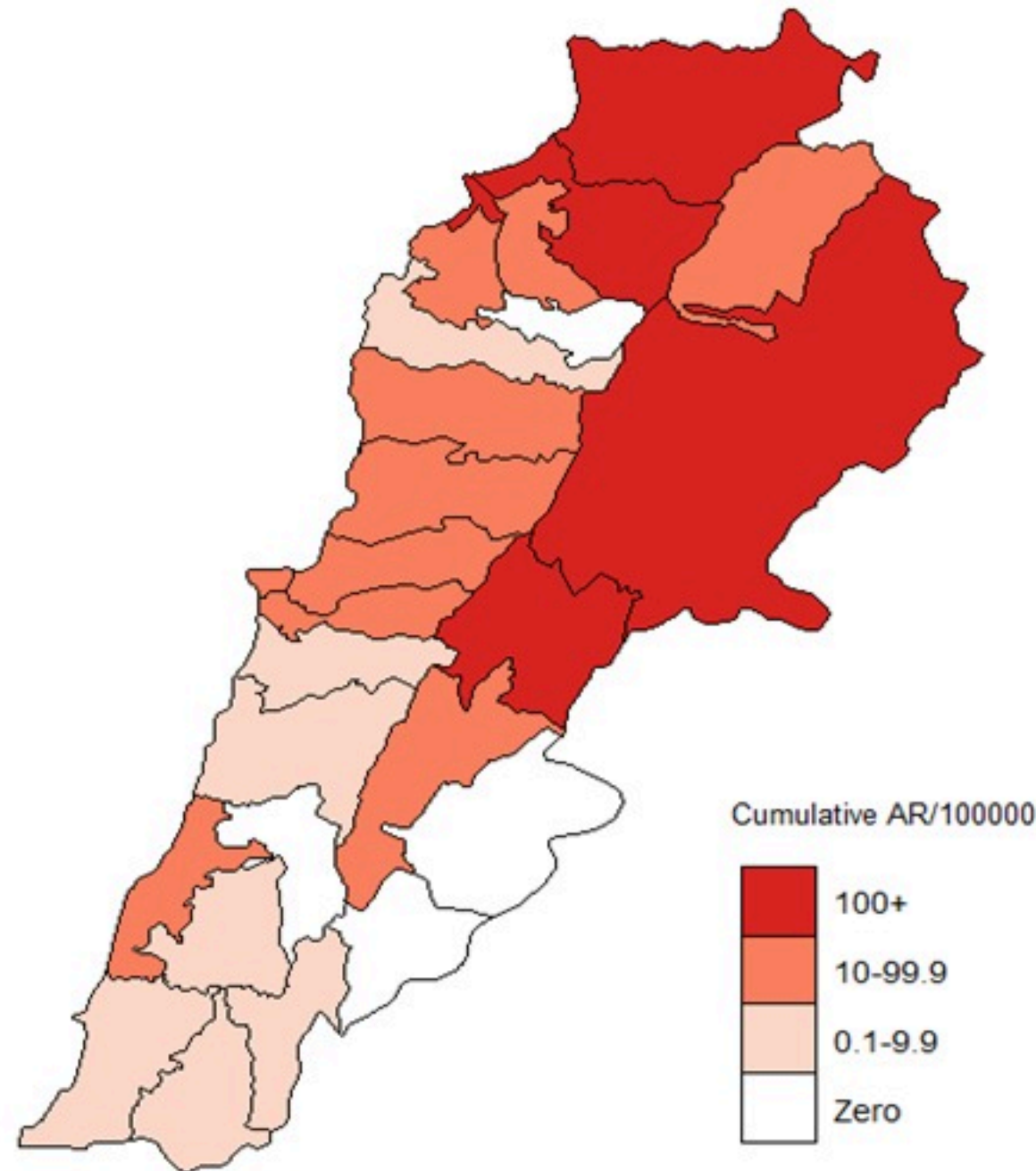


Cholera Surveillance Update

14 Mar 2023

Cumulative Attack Rate per 100,000 (suspected and confirmed)

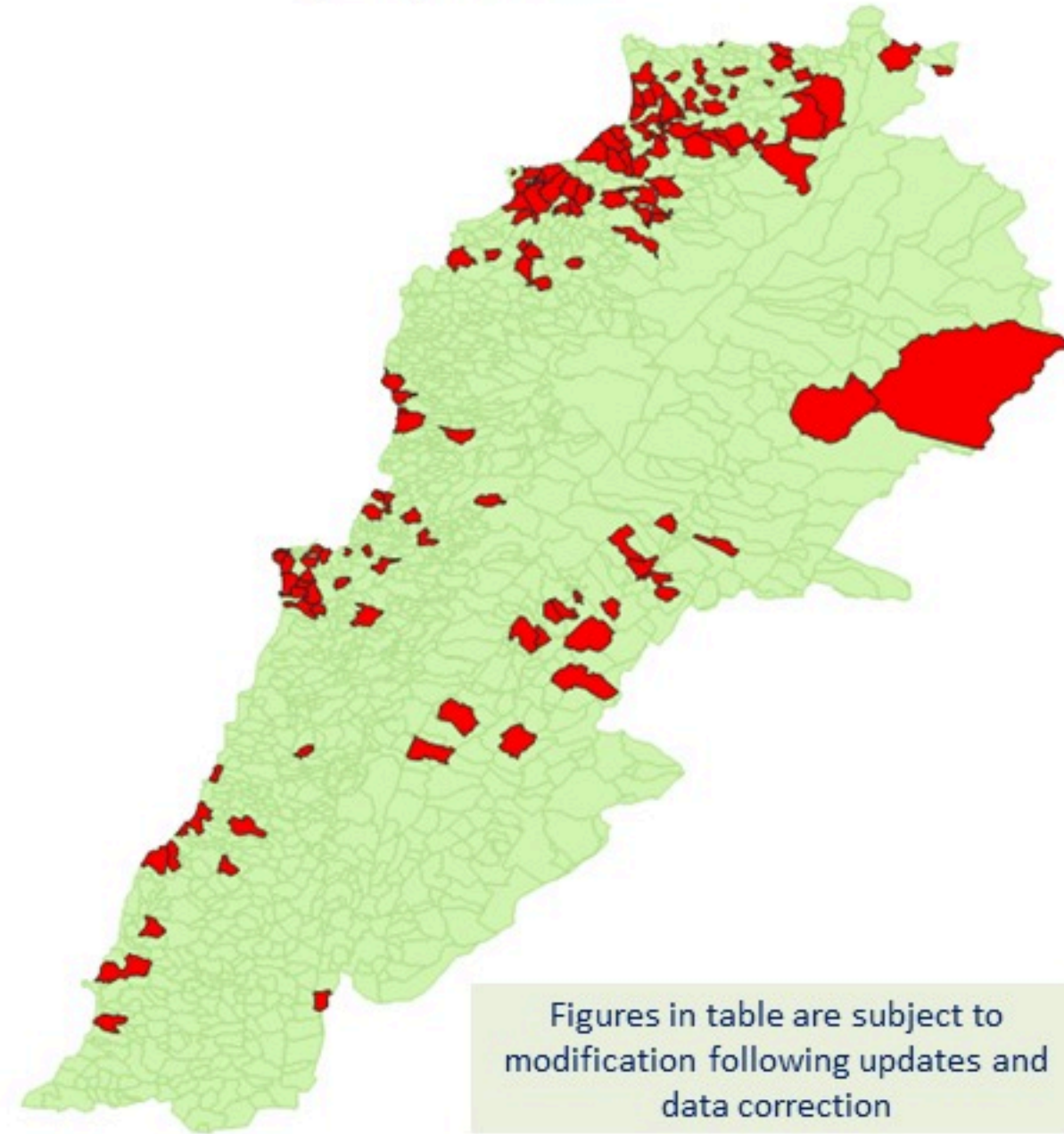
نسبة الحدوث التراكمية لكل مئة الف نسمة (الحالات المشتبهه والمثبتة)



Cholera Surveillance Update

14 Mar 2023

By locality (confirmed)
حسب البلدة (المتبئة)



Figures in table are subject to modification following updates and data correction

Caza	Locality	Cases	Caza	Locality	Cases	
Akkar	Akkar Atika	1	Kiswan	Aintouna	1	
	Amayer/Quadi Khaled	1		Ballounh	1	
	Arqa / Marlayet Haddara	2		Bqatouta	7	
	Bebnine / Baddoua	16		Ghair	2	
	Beit Hajj/Koucha/Khreibit Jindi	1		Jounieh Ghadir	4	
	Bergayel	1		Jounieh Sabra	4	
	Bezbina	1		Yahchouch	1	
	Birch	2		Zouk Mosbeh	3	
	Bqerzia	1		Kouna	Aaba	1
	Cheikh Ayache / Chir Hmairine	1			Aufdiq	1
	Dahr Qambar /Hokr Qatteh	1	Basa		1	
	Dabadab	1	Bsama		1	
	Dinbou	2	Dahr Ain / Ras Masqua		1	
	Fneydek	1	Rachdibbine		1	
	Halba	1	Kfar Aqa		1	
	Hayssa	1	Aadayssah		1	
	Hocouich	1	Marjoun		Biklaya	1
	Jdeidat Qaytee	1			Broummata	1
	Kfar Harra	4		Bsalim	1	
	Kfar Melki	1		Daruna/Borj Hammoud	2	
	Khane Hayat	1		Mansourieh	3	
	Khirbet Char	2		Zalqa	1	
	Kneisset Hnaldar	1		Minieh Danieh	Aadoua	1
	Kouachra	1			Assoun	4
	Koukikhat	2			Ain El Timh	1
	Machha	2			Bahsa	1
	Majdala	1	Bakhaoum		4	
	Memneaa	1	Bhanine / Zouk Bhanine		7	
	Mhamarah / Nahr Bared / Abdeh	22	Btamar		6	
	Minlara	1	Douniya		1	
	Mqyatea	1	Kfar Chollane		2	
	Ouadi Jamous	11	Kfar Habou		1	
	Qaabrine / Tal Hayat	1	Makabta	2		
	Qbalyat	1	Minieh	Minieh	18	
	Qlayat Akkar	2		Qouatiyeh	1	
Qobet Chamra	17	Qatime		3		
Rahbeh	1	Rihanieh		35		
Ransiyeh / Deir Dalloum	1	Sir Daniieh		5		
Saadine	4	Saïda		Aanqoun	1	
Tell Abbas Charqui	2			Bissariyeh	4	
Tieil	1			Ghazieh	2	
Zouq Haddara	1			Khawayeb	3	
Zouq Hosnieh	1			Saïda	1	
Aley	Aley		1	Sawfand	1	
	Hay Selloum/Chouifat		1	Sour	Abbassiyeh	1
Baabda	Ain Roumanneh		1		Deir Qaroun Ain	4
	Borj Brajneh		3	Tebek	Badawi	16
	Ghbayroh/Chiyah/Sabra		2		Mina	7
	Hadath	1	Qobbah	21		
	Haret Hireik	1	Tripoli	Tripoli Bab Raml	1	
Kfar Chima	1	Tripoli Gardans		2		
Mrejijh	2	Tripoli Haddadine		1		
Baalbeck	Arsal	27		Tripoli Nouri	1	
	Kfar Dabache	2		Tripoli Souayqa / Assaïn	3	
	Khodr	2		Tripoli Tabbaneh	21	
	Temnine Faouqa	1		Tripoli Zaitoun	15	
	Temnine Tahta	1	West Beqaa	Kamel Jaruz	1	
Younine	1	Kufaya		1		
Batroun	Chikka	1		Saghbine	1	
	Achrafieh	2		Zahleh	Aali Nahri	2
Beirut	Ain Miralssch	1			Bar Elias	2
	Hamra	1			Dalhameh	2
	Mdaouar / Mar Mikhael	1			Harouch Mandra	1
	Msaïtbeh	1			Hawch Omara	7
	Chouf	Zaarouriyeh			1	Majdal Anjar
Jbeil		Amchit			1	Qob Elias
		Ehmej	1		Raait	11
		Fidar	1		Saadinayd	11
		Halate	1		Tadabaya	2
	Jbeil	1	Zahleh Madaka	2		
Mastita	1	Zghorta	Aalma	1		
Kiswan	Andeh		1	Kfar Ouzous	2	
	Ballounh		1	Majdalya Zghorta	7	
	Bqatouta		7	Miriata / Fozur	3	
	Ghair		2	Sabad	1	
	Jounieh Ghadir		4	Zghorta	5	
	Jounieh Sabra		4			
	Yahchouch		1			
	Zouk Mosbeh		3			
	Kouna		Aaba	1		
		Aufdiq	1			
Basa		1				
Bsama		1				
Dahr Ain / Ras Masqua		1				
Rachdibbine		1				
Kfar Aqa		1				
Aadayssah		1				
Biklaya		1				
Broummata		1				
Marjoun	Bsalim	1				
	Daruna/Borj Hammoud	2				
	Mansourieh	3				
	Zalqa	1				
	Minieh Danieh	Aadoua	1			
		Assoun	4			
		Ain El Timh	1			
		Bahsa	1			
		Bakhaoum	4			
		Bhanine / Zouk Bhanine	7			
Btamar		6				
Douniya		1				
Kfar Chollane		2				
Kfar Habou		1				
Minieh	Makabta	2				
	Minieh	18				
	Qouatiyeh	1				
	Qatime	3				
	Rihanieh	35				
	Sir Daniieh	5				
	Saïda	Aanqoun	1			
		Bissariyeh	4			
		Ghazieh	2			
		Khawayeb	3			
Saïda		1				
Sawfand		1				
Sour		Abbassiyeh	1			
		Deir Qaroun Ain	4			
Tebek		Badawi	16			
		Mina	7			
Tripoli	Qobbah	21				
	Tripoli Bab Raml	1				
	Tripoli Gardans	2				
	Tripoli Haddadine	1				
	Tripoli Nouri	1				
	Tripoli Souayqa / Assaïn	3				
	Tripoli Tabbaneh	21				
Tripoli Zaitoun	15					
West Beqaa	Kamel Jaruz	1				
	Kufaya	1				
	Saghbine	1				
	Zahleh	Aali Nahri	2			
		Bar Elias	2			
Dalhameh		2				
Harouch Mandra		1				
Hawch Omara		7				
Majdal Anjar		1				
Qob Elias		9				
Raait		11				
Saadinayd		11				
Tadabaya		2				
Zahleh Madaka	2					
Zghorta	Aalma	1				
	Andeh	1				
	Kfar Ouzous	2				
	Majdalya Zghorta	7				
	Miriata / Fozur	3				
	Sabad	1				
	Zghorta	5				

Cholera weekly incidence rate/100,000

