

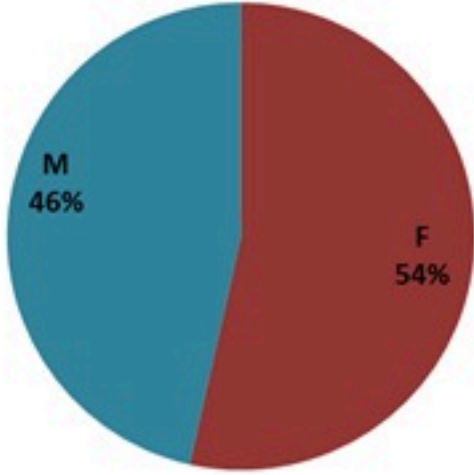
# ترصد الكوليرا في لبنان 11 نيسان 2023

الجمهورية اللبنانية  
وزارة الصحة العامة  
برنامج الترصد الوبائي



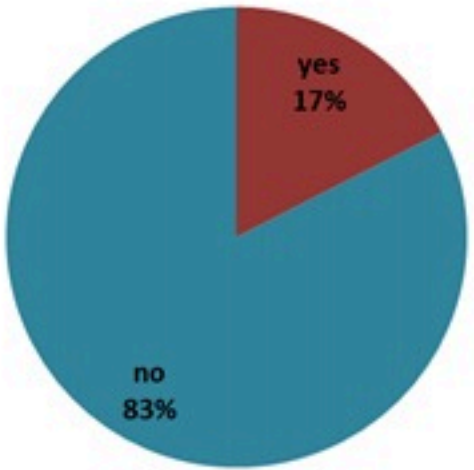
## الخطوط الساخنة

1760 (الصليب الأحمر)  
1787 (وزارة الصحة)



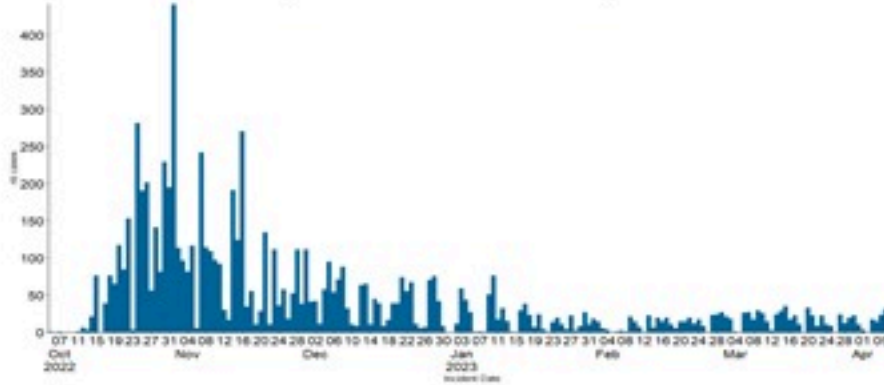
حسب الجنس  
(المشبهة والمتبنة)

الوفيات (المتبنة)		الحالات المثبتة		كافة الحالات المشبهة والمتبنة	
التراكمي	الجديدة (آخر 24 ساعة)	التراكمي	الجديدة (آخر 24 ساعة)	التراكمي	الجديدة (آخر 24 ساعة)
23	0	671	0	7317	0

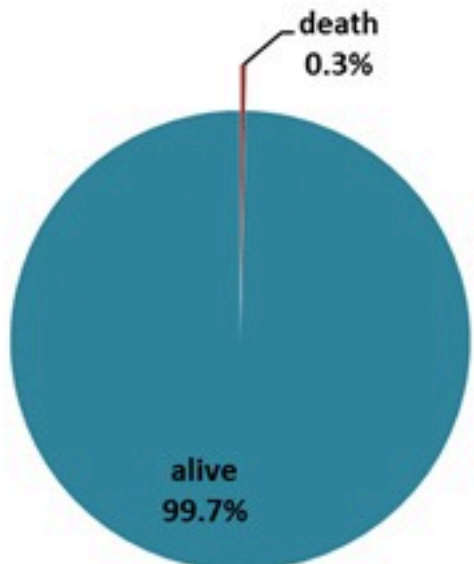
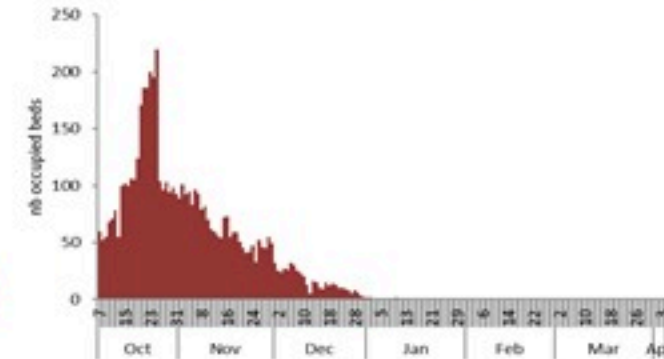


حسب الاستشفاء  
(المشبهة والمتبنة)

حسب تاريخ الإبلاغ  
(للحالات المثبتة والمتبنة)

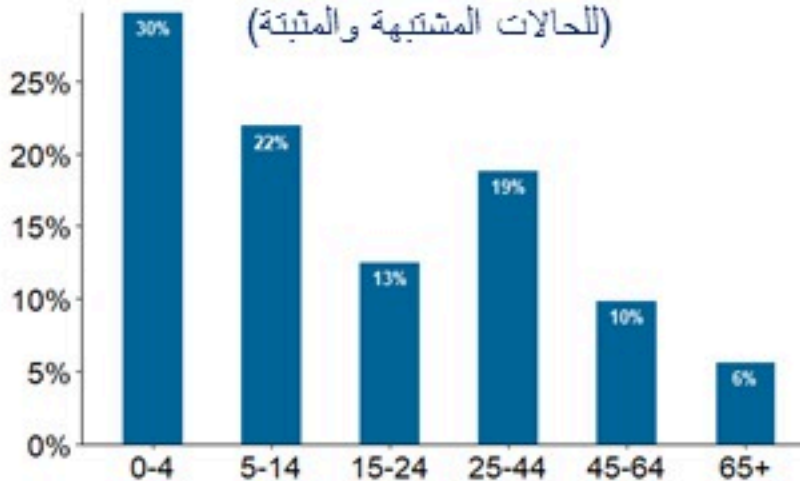


استعمال الاسرة الاستشفائية  
(للحالات المثبتة والمتبنة)



حسب تطور  
الحالة  
(المشبهة والمتبنة)

حسب الفئة العمرية  
(للحالات المشبهة والمتبنة)



حسب البلدة  
(للحالات المثبتة)



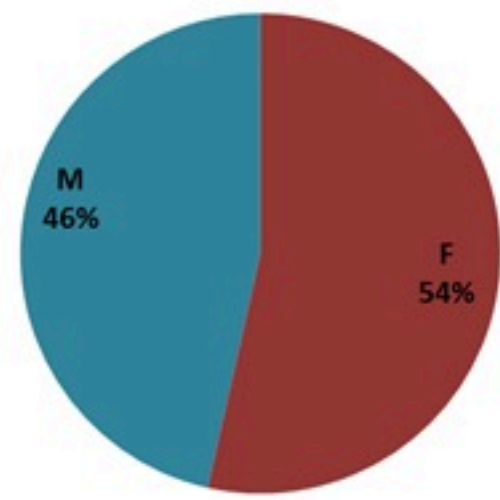
# Cholera Surveillance Report

## 11 Apr 2023

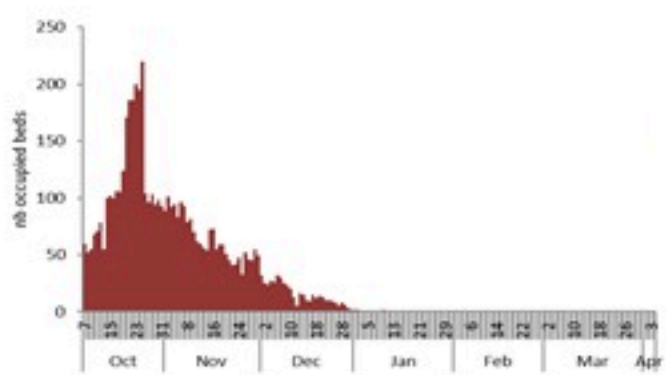
**Call Centers**  
 1760 (Red Cross)  
 1787 (MOPH)

All cases (suspected and confirmed)		Confirmed Cases		Deaths (confirmed)	
New (past 24 h)	Cumulative	New (past 24 h)	Cumulative	New	Cumulative
<b>0</b>	<b>7317</b>	<b>0</b>	<b>671</b>	<b>0</b>	<b>23</b>

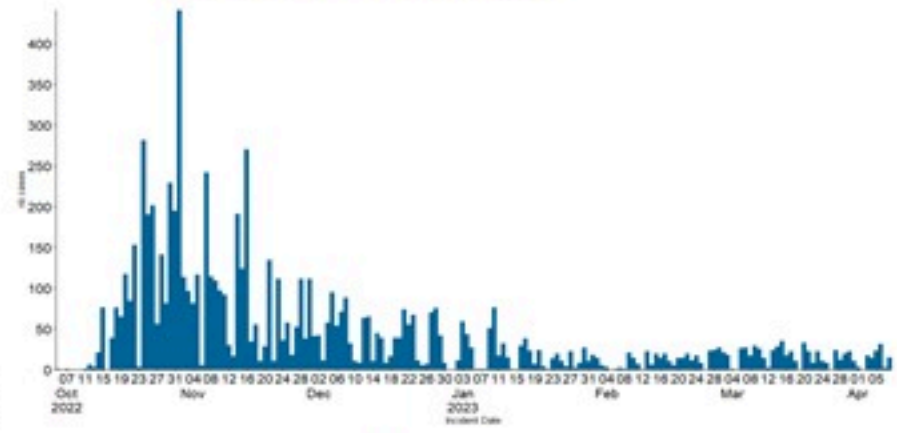
By Sex  
(suspected and confirmed)



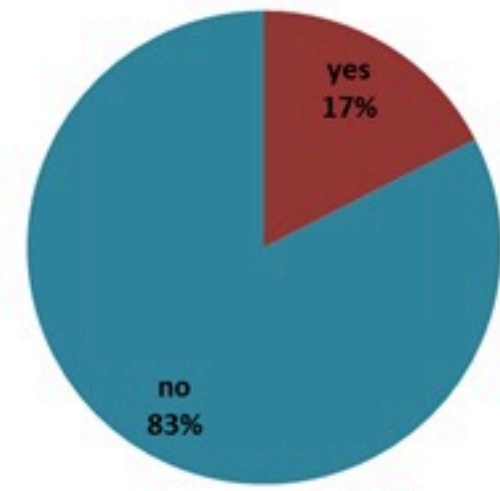
Occupied hospital beds  
(suspected and confirmed)



By date of report  
(suspected and confirmed)



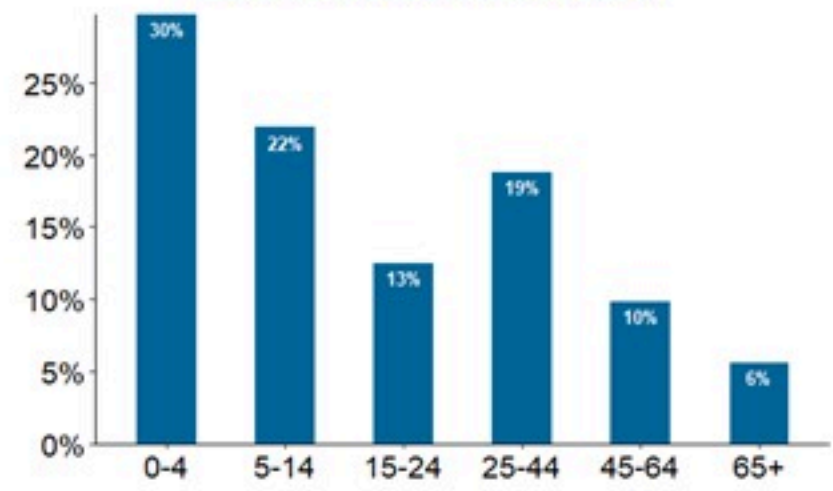
By Hospital Admission  
(suspected and confirmed)



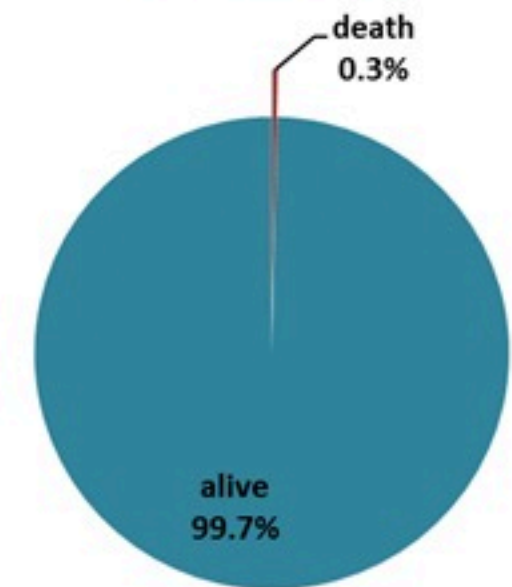
By locality (confirmed cases)



By age group  
(suspected and confirmed cases)



By Outcome  
(suspected and confirmed)

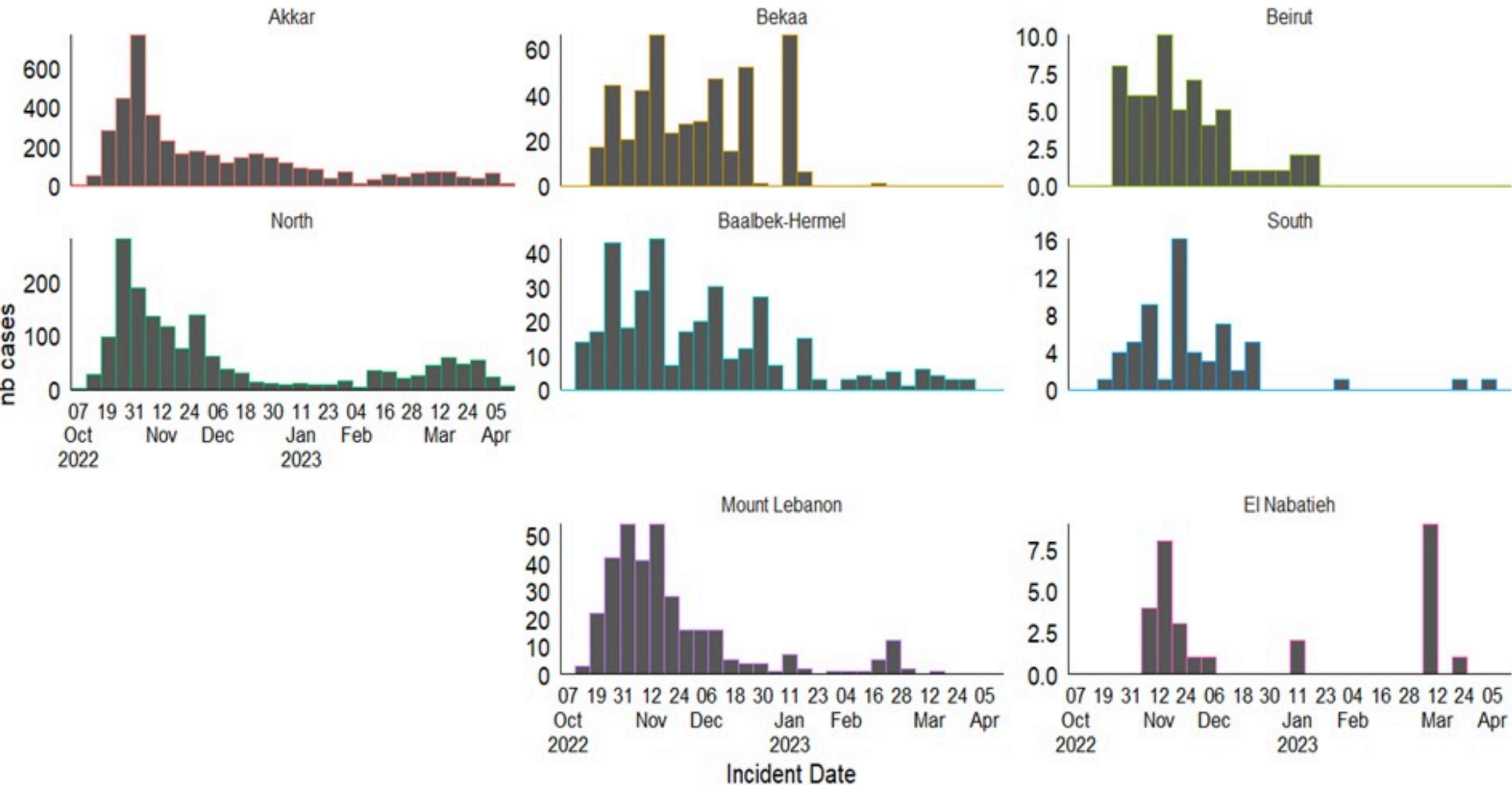




# Cholera Surveillance Report

## 11 Apr 2023

Epicurves by date of reporting by province  
(suspected and confirmed)

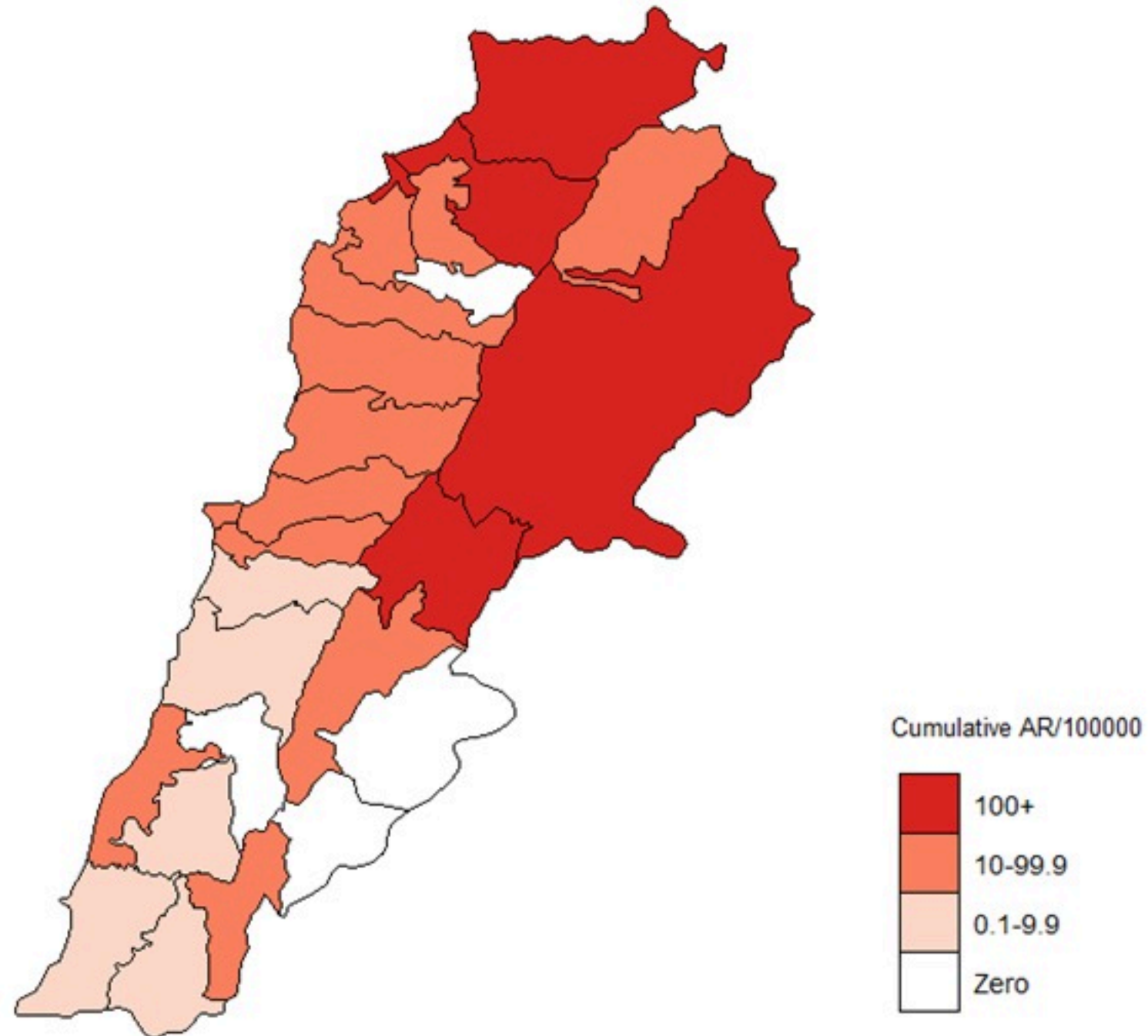


# Cholera Surveillance Update

## 11 Apr 2023

Cumulative Attack Rate per 100,000 (suspected and confirmed)

نسبة الحدوث التراكمية لكل مئة الف نسمة (الحالات المشتبهه والمثبتة)

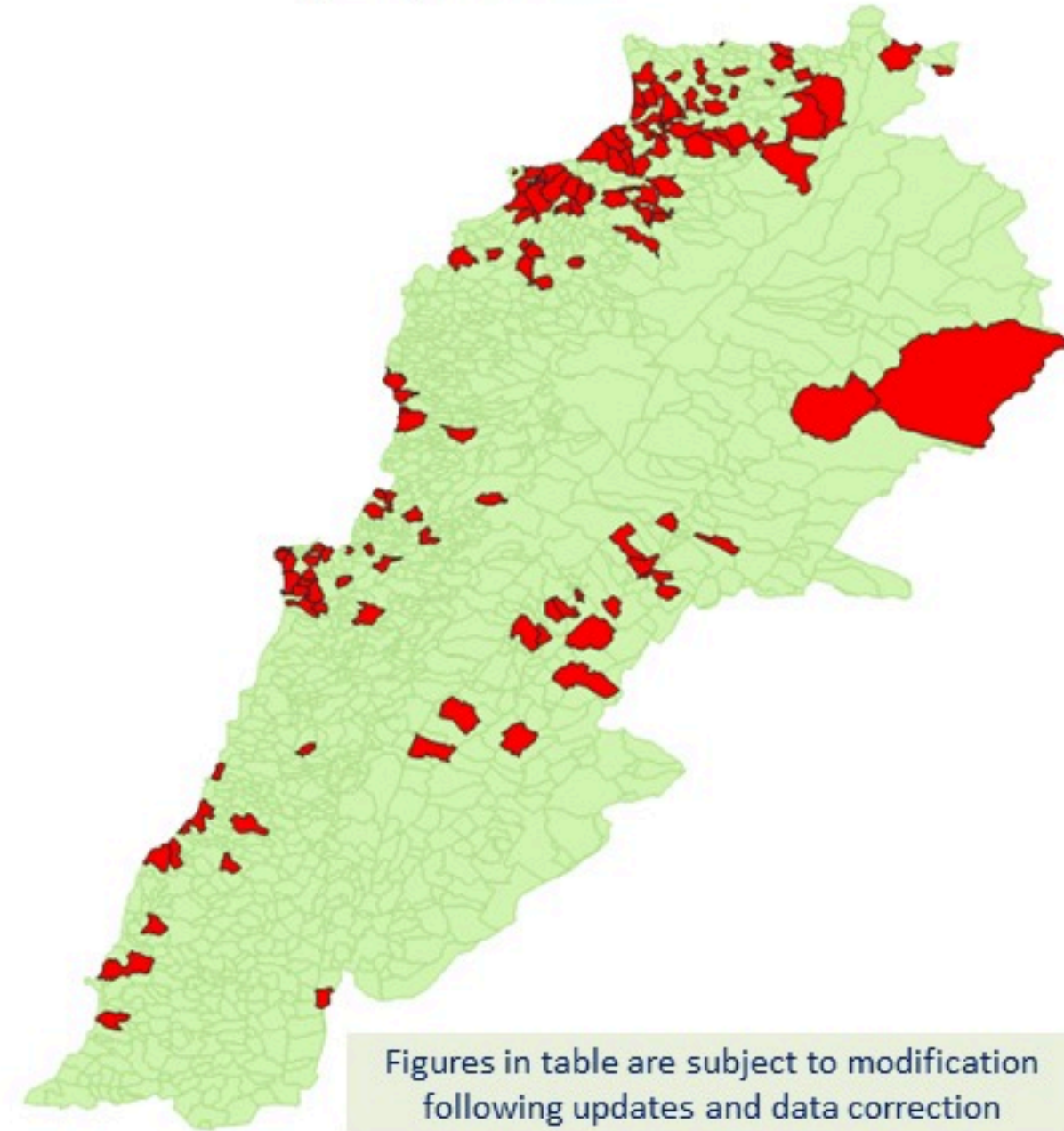




# Cholera Surveillance Update

## 11 Apr 2023

By locality (confirmed)  
حسب البلدة (المتبئة)



Figures in table are subject to modification following updates and data correction

Caza	Locality	Cases	Caza	Locality	Cases	
Akkar	Akkar Atika	1	Kiswan	Aintouna	1	
	Amayer/Quadi Khaled	1		Balfounh	1	
	Arqa / Marlayet Haddara	2		Bqawzuta	7	
	Bebnine / Baddoua	16		Ghair	2	
	Beit Hajj/Koucha/Khreibit Jindi	1		Jounieh Ghadir	4	
	Bergayel	1		Jounieh Sabra	4	
	Bezbina	1		Yahchouch	1	
	Birch	2		Zouk Mosbeh	3	
	Bqerzia	1		Koura	Aaba	1
	Cheikh Ayache / Chir Hmalrine	1			Aufdiq	1
	Dahr Qambar /Hokr Qatteh	1			Basa	1
	Dabadab	1	Bsama		1	
	Dinbou	2	Dahr Ain / Ras Masqua		1	
	Fneydek	1	Rachdibbine		1	
	Halba	1	Kfar Aqa		1	
	Hayssa	1	Aadayssah		1	
	Hocouich	1	Marjoun		Biklaya	1
	Jdeidat Qaytee	1			Broummata	1
	Kfar Harra	4		Bsalim	1	
	Kfar Melki	1		Daruna/Borj Hammoud	2	
	Khane Hayat	1		Mansourieh	3	
	Khirbet Char	2		Zalqa	1	
	Kneisset Hnaldar	1		Minieh Danieh	Aadoua	1
	Kouachra	1			Assoun	4
	Koukikhat	2			Ain El Tineh	1
	Machha	2			Bahsa	1
	Majdala	1	Bakhaoum		4	
	Memneaa	1	Bhanine / Zouk Bhanine		7	
	Mhamarah / Nahr Bared / Abdeh	22	Btamar		6	
	Minlara	1	Douniya		1	
	Mqyatea	1	Kfar Chollane		2	
	Ouadi Jamous	11	Kfar Habou		1	
	Qaabrine / Tal Hayat	1	Makabta		2	
	Qbalyat	1	Minieh		18	
	Qlayat Akkar	2	Qouatiyeh		1	
	Qobet Chamra	17	Qatime		3	
	Rahbeh	1	Rihanieh		35	
	Ransiyeh / Deir Dalloum	1	Sir Dannieh		5	
	Saadine	4	Saïda		Aanqoun	1
	Tell Abbas Charqui	2			Bissariyeh	4
Tieil	1	Ghazieh		2		
Zouq Haddara	1	Khawayeb		3		
Zouq Hosnieh	1	Saïda		1		
Aley	Aley	1		Sawand	1	
	Hay Selloum/Chouifat	1		Sour	Abbasiyeh	1
Baalbeck	Arsal	27	Deir Qaroun Ain		4	
	Kfar Dabache	2	Tripoli	Badawi	16	
	Khodr	2		Mina	7	
	Temnine Faouqa	1		Qobbah	21	
	Temnine Tahta	1		Tripoli Bab Raml	1	
	Younine	1		Tripoli Gardans	2	
	Batroun	Chikka		2	Tripoli Haddadine	1
Achrafieh		2		Tripoli Nouri	1	
Ain Miralsseh		1		Tripoli Souayqa / Jsrain	3	
Hamra		1		Tripoli Tabbaneh	21	
Mdaour / Mar Mikhael		1		Tripoli Zaitoun	15	
Beirut	Msaïtbeh	1	West Beqaa	Kamel Jaruz	1	
	Zaarouriyeh	1		Kufaya	1	
	Chouf	Amchit		1	Saghbine	1
		Ehmej		1	Zahleh	Aali Nahri
Fidar		1		Bar Elias		2
Halate		1	Dalhamieh	2		
Jbeil		1	Harouch Mandra	1		
Mastita		1	Hawch Omara	7		
Jbeil		Amchit	1	Majdal Anjar		1
		Ehmej	1	Qob Elias		9
		Fidar	1	Raait		11
		Halate	1	Saadinayd		11
	Jbeil	1	Talabaya	2		
	Mastita	1	Zahleh Madaka	2		
	Zghorta	Zaarouriyeh	1	Zghorta	Aalma	1
		Amchit	1		Andeh	1
		Ehmej	1		Kfar Dhaqous	2
		Fidar	1		Majdalya Zghorta	7
Halate		1	Mirata / Fozur		3	
Jbeil		1	Sabad		1	
Mastita		1	Zghorta		5	



